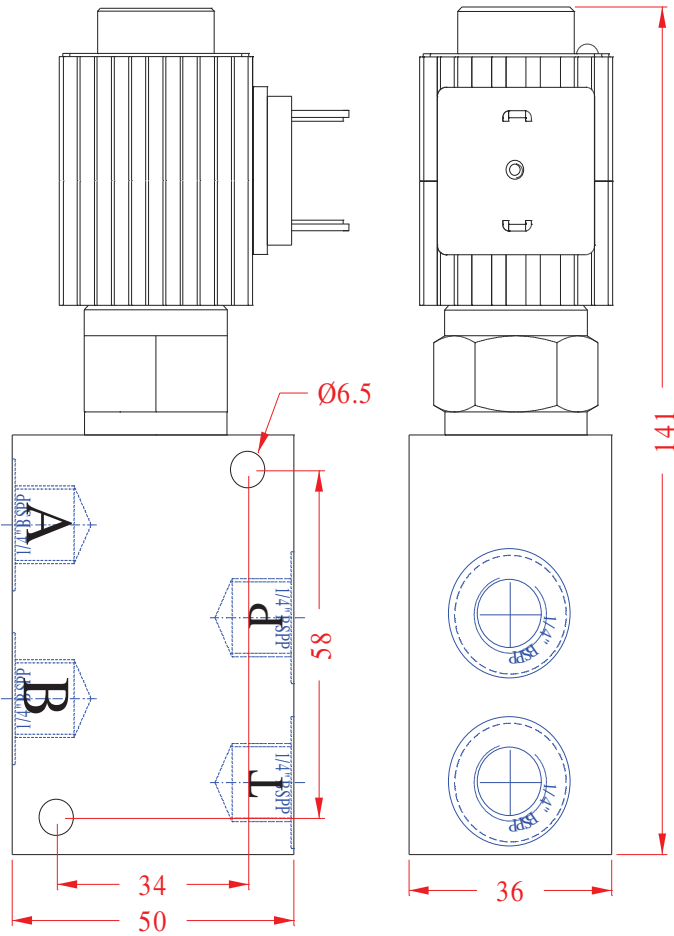
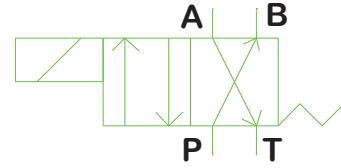


## DIMENSIONS



**NOTE:**  
All ports are 1/4" B.S.P.P.



**DESCRIPTION:** The PQH08 quickhitch valve is a 4 port directional valve shuttle for use in earthmoving machinery for actuation of quickhitch cylinders. It features a plated steel housing, and has a 350 bar (5000 p.s.i.) pressure rating. This valve has many other applications.

**OPERATION:** When the solenoid is not energised the valve directs oil from the 'P' port to the 'B' port. Port 'A' is connected to port 'T'. When the solenoid is actuated, pressure is applied to port 'A', and port 'B' is connected to port 'T'.

## FEATURES:

- Compact.
- Steel housing.
- 350 bar (5000 p.s.i.) pressure rating.
- No dynamic seals.
- 12 or 24 volt operation (specify when ordering).
- All cartridges 100% factory tested.

## SPECIFICATIONS:

- OPERATING PRESSURE: 350 bar (5000 p.s.i.) max.
- MEDIA: general purpose hydraulic fluids @ -40° c to +120° c.
- FLOW: To 20 litres/min.
- WEIGHT: \*\*\* Kg.
- COIL CURRENT DRAW: 1.8 amps(12 v.d.c.), 0.9 amps (24 v.d.c.).

## IMPORTANT PRECAUTIONS

All ports are B.S.P. parallel, and appropriate fittings must be used. Tapered fittings are not acceptable.

## ORDERING CODE

