



PRIMEHYD



www.primehyd.com.au

sales@primehyd.com.au

Ph: +61 8 9248 4144

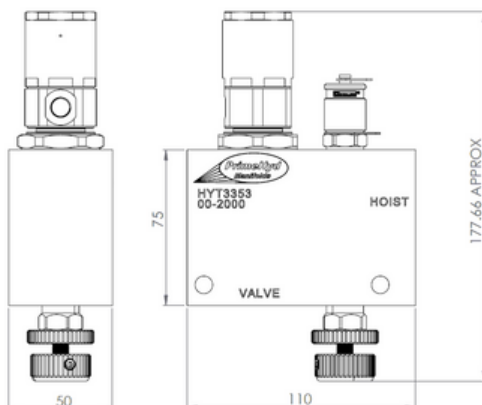
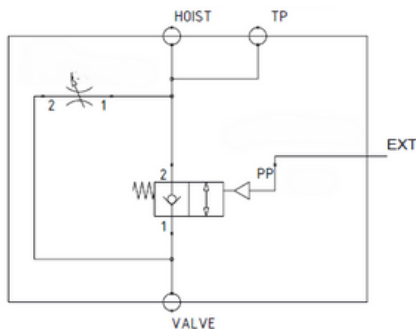
4/471 Victoria Road, Malaga WA
6090, Australia

A.C.N. 134693342 A.B.N 66134693342

AIR HOIST CHECK VALVE - HYT3353-10

Protection from hydraulic hose failure on truck tippers, dog trailers, grain tippers, and any load hauling vehicle that uses a tipping hoist to raise and tip a load, is a vital safety requirement.

In the event of a sudden drop in hoist pressure, this valve will prevent a tipping hoist from lowering, protecting the driver and operator from possible harm and the truck and trailer from likely damage.



Description:

The PrimeHyd HYT3353-10 Air Hoist Check Valve is a compact air piloted normally closed poppet check valve specifically designed to hold the load of a tipper hoist cylinder in the event of a hose failure. The Valve is directly mounted to the hoist cylinder port, being hard connected between the hoist cylinder and the normal hoist control valve, ensuring true hose burst safety protection.

Operation:

Raising the hoist cylinder is controlled by the air piloted hoist control valve, which directs oil from the pump to the hoist cylinder, as normal, via the free-flow check in the Air Hoist Check Valve.

Lowering the hoist cylinder is controlled by the air piloted hoist control valve, whereas the same air supply simultaneously pilot opens the check in the Air Hoist Check Valve, allowing oil from the hoist cylinder to return to the tank, as normal. Emergency lowering is via a manual override screw.

Holding the hoist cylinder up in the required position is primarily and safely maintained by the Air Hoist Check Valve, that is, until the air piloted hoist control valve is operated to raise or lower, as above.

Technical Specifications

Rated flow:	150 l/min nominal
Max. pressure:	210 bar, 3000 psi based on Aluminium body
Max. leakage:	0.15 cc/min (3 drops/min) @ 350 bar
Manual override:	Screw-in cartridge shut-off valve
Main ports:	1" BSPP Valve and Hoist
Air input port:	1/8" BSPP
Test Port:	1/4" BSPP

05.05.2025 REV. 0

Specifications, descriptions and dimensional data are subject to correction or change without notice or incurring obligation.