

C  
E  
T  
O  
P  
5



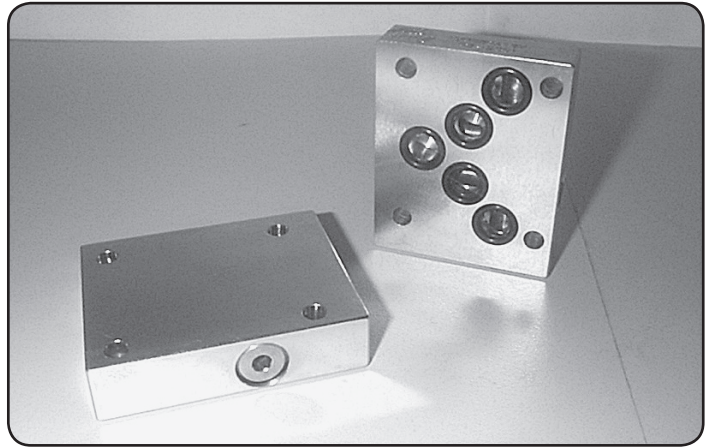
H = Steel  
M = Alloy  
Function Descriptions - Refer to Circuits Shown

### Specifications

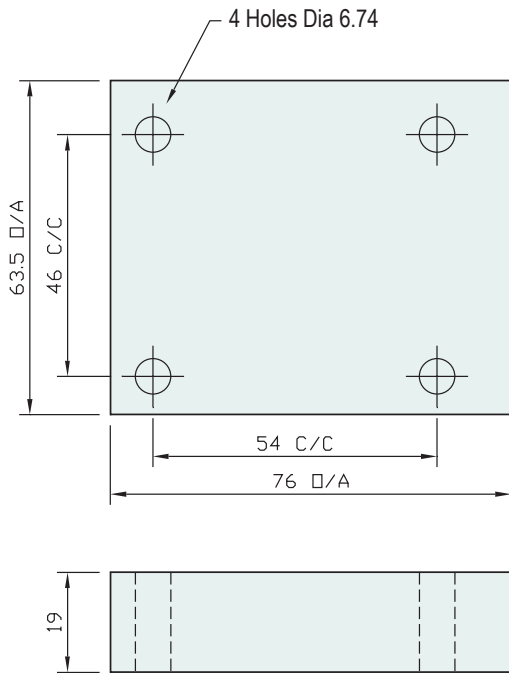
**Material :** Steel - S1214 Alloy - T6-6061  
**Max. Working Pressure :** Steel - 350 Bar Alloy - 210 Bar  
**Surface Treatment :** Steel - Zinc Gold Passivation Alloy - Nil

### Included Components

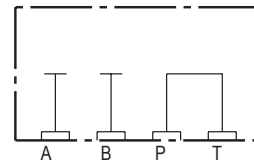
**Socket Head Cap Screws:** 4 each M6 x 30  
**O-Rings :** HXPC5PBTA, 2 each N9-118, 1 each N9-014  
 HXPC5PATB, HXPC5PT, HXPC5AB 5 each N9-014  
 HXPC5PA, PB, TA, TB 1 each N9-118, 3 each N9-014



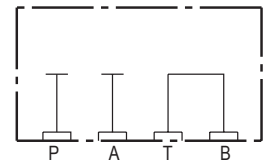
### Technical Details



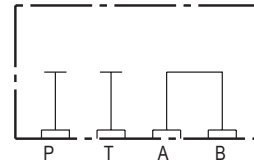
### Manifold Circuits



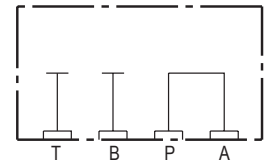
**HXPC5PT\***  
P-Port to T-Port



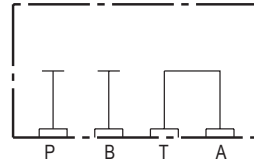
**HXPC5TB\***  
T-Port to B-Port



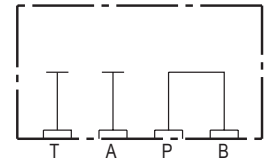
**HXPC5AB\***  
A-Port to B-Port



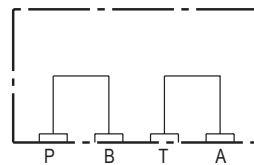
**HXPC5PA\***  
P-Port to A-Port



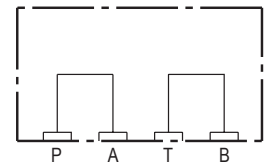
**HXPC5TA\***  
T-Port to A-Port



**HXPC5PB\***  
P-Port to B-Port



**HXPC5PBTA\***  
P-Port to B-Port T-Port to A-Port



**HXPC5PATB\***  
P-Port to A-Port T-Port to B-Port

### Steel

Part Number	Nominal Mass Kg
HXPC5PTH	1.0
HXPC5ABH	1.0
HXPC5PAH	1.0
HXPC5PBH	1.0
HXPC5TAH	1.0
HXPC5TBH	1.0
HXPC5PATBH	1.0
HXPC5PBTAH	1.0

### Alloy - Made to Order

Part Number	Nominal Mass Kg
HXPC5PTM	0.6
HXPC5ABM	0.6
HXPC5PAM	0.6
HXPC5PBM	0.6
HXPC5TAM	0.6
HXPC5TBM	0.6
HXPC5PATBM	0.6
HXPC5PBTAM	0.6