

H T S C 7 P T *

Hydraulic Tapping Sandwich Cetop7 P & T Ports M = Alloy
H = Steel

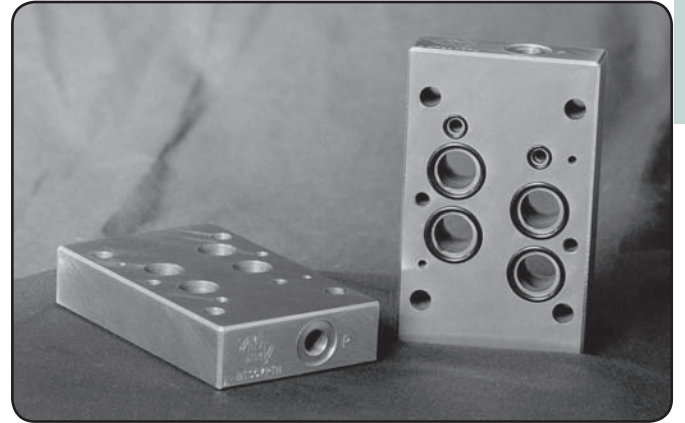
Specifications

Material :	Alloy 6061-T6	Steel - S1214
Max. Working Pressure :	Alloy - 210 Bar	Steel - 350 Bar
Surface Treatment :	Alloy - Nil	Steel - Zinc Gold Passivation
Port Sizes :	P & T - 1/4" BSPP	

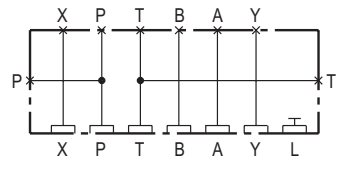
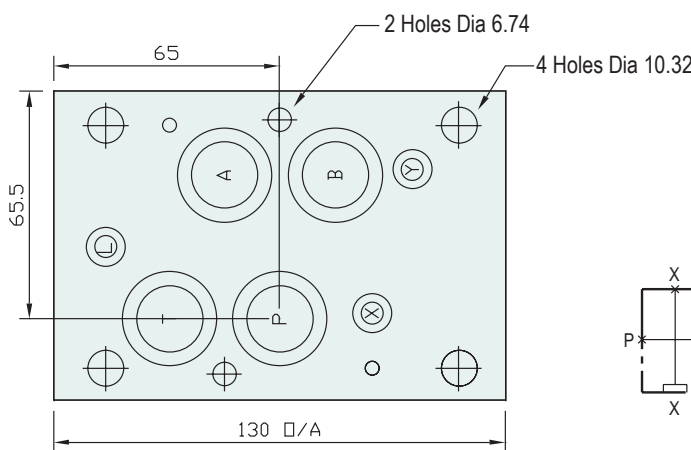
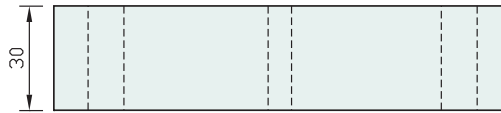
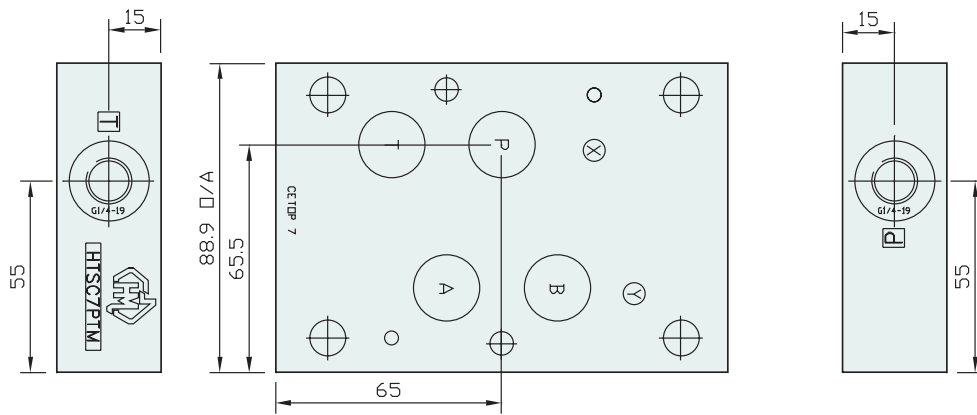
Included Components

O-Rings :	4 each N9-118, 3 each N9-011
------------------	------------------------------

Technical Details



CETOP 7



Manifold Circuit



Part Number	Nominal Mass Kg
HTSC7PTH	3.0
HTSC7PTM	0.9