

Counterbalance A or B-Port

H S 3 10 3S S 1 *

Hydraulic Sandwich Cetop3 C10-3S Cavity Single Cavity Counterbalance 'A' or 'B'-Port
Function Example Refer to Circuit

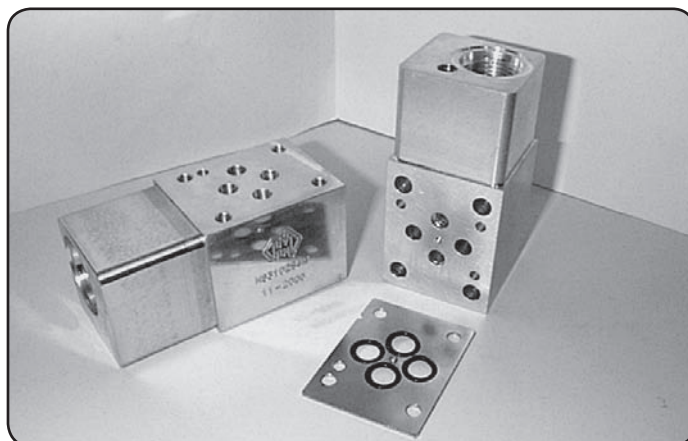
M = Alloy
H = Steel

Specifications

Material : Alloy 6061-T6 Steel - S1214
Max. Working Pressure : Alloy - 210 Bar Steel - 350 Bar
Surface Treatment : Alloy - Nil Steel - Zinc Gold Passivation

Included Components

O-Ring Plate : 1 each **HSC3OP1H**
O-Rings : 4 each **N9-012**
Locating Pin : 1 each Dia. 4 mm x 10 mm

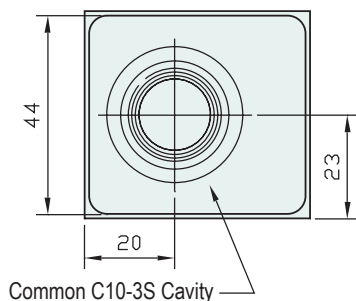
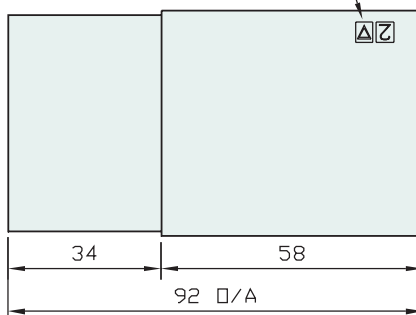


Technical Details

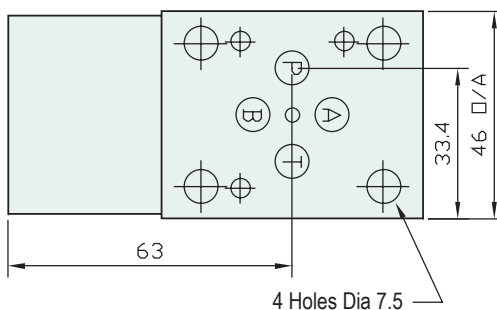
Projection



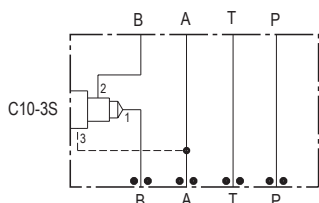
Refer to Circuit Example 2



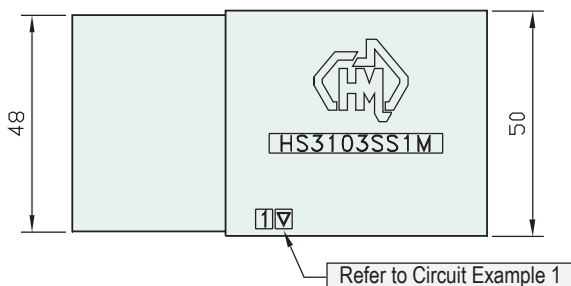
Common C10-3S Cavity



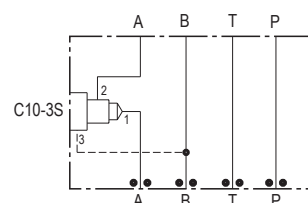
4 Holes Dia 7.5



Circuit Option , Example 1
1 - Counterbalance 'B'-Port



Refer to Circuit Example 1



Circuit Option , Example 2
1 - Counterbalance 'A'-Port

Part
Number

Nominal
Mass Kg

HS3103SS1H 1.5

HS3103SS1M 0.5

HSC3OP1H - O-Ring Plates
Also Available Separately

Industry Std. C10-3S Cavity Form Suitable for the Following Valve Manufacturers :
Modular , Hydraforce & Sterling

Please Ensure Valve Selection is Suitable for your Application
For More Information Contact H.M.A. Sales