

CETOP3

P-Port Interupt

H S 3 10 2 S 4 *

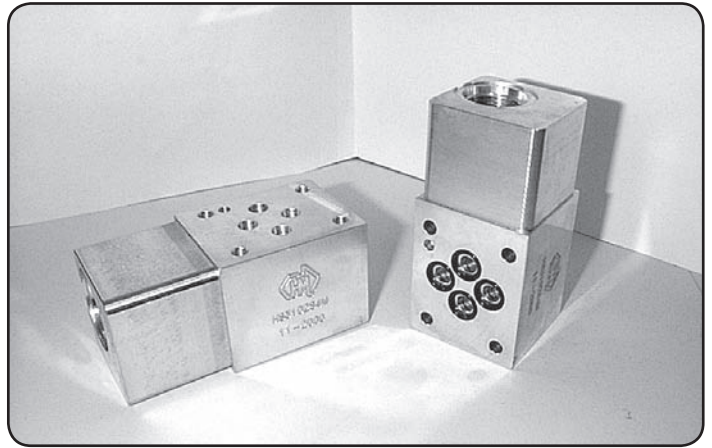
H Hydraulic Sandwich Cetop3
S Common C10-2 Cavity
3 Single Cavity
10 'P'-Port Interupt
2 Refer to Circuit for Function
S M = Alloy
 H = Steel
4

Specifications

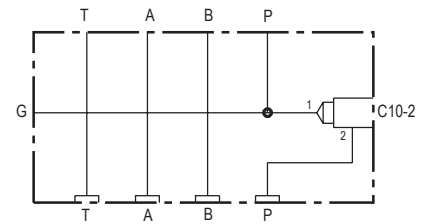
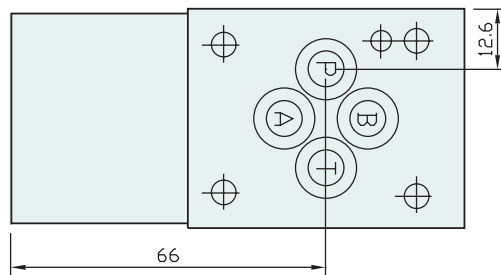
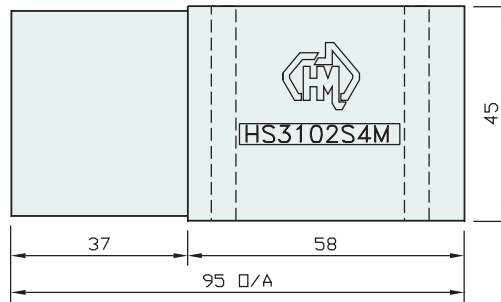
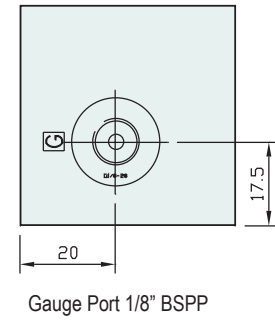
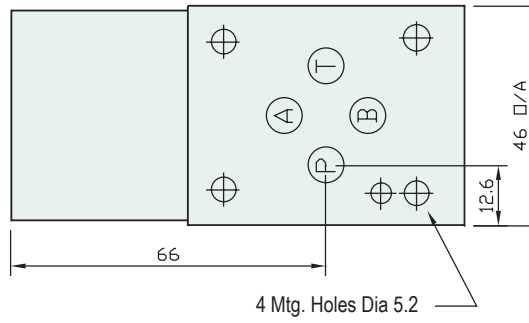
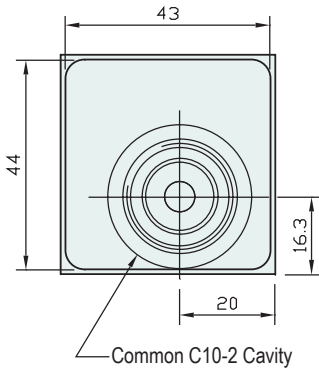
Material : Alloy 6061-T6 Steel - S1214
Max. Working Pressure : Alloy - 210 Bar Steel - 350 Bar
Surface Treatment : Alloy - Nil Steel - Zinc Gold Passivation

Included Components

O-Rings : 4 each N9-012
Locating Pin : 1 each Dia. 4 mm x 10 mm



Technical Details



Manifold Circuit

1 - 'P'-Port Meter Out Flow Control
 2 - Needle Valve Meter In and Out 'P'-Port



Part Number	Nominal Mass Kg
HS3102S4H	1.2
HS3102S4M	0.5

Industry Std. C10-2 Cavity Form Suitable for the Following Valve Manufacturers :
Modular , Delta , Parker , Hydraforce , Compact & Sterling

Please Ensure Valve Selection is Suitable for your Application
 For More Information Contact H.M.A. Sales

SOLD SEPARATELY IF REQUIRED
 COMMON RELIEF VALVE - RP100-ABN (Suits Alloy) - RP100-ACN (Suits Steel)