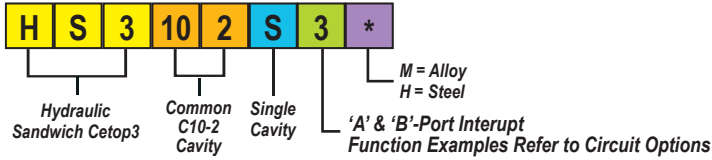


A or B-Port Interupt

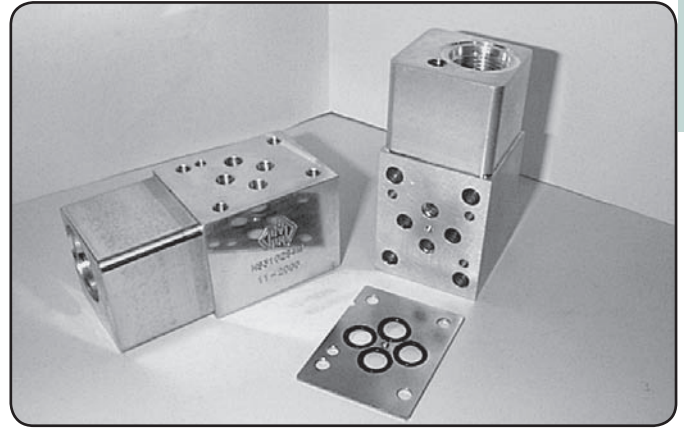


Specifications

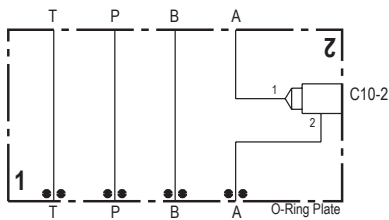
Material :	Alloy 6061-T6	Steel - S1214
Max. Working Pressure :	Alloy - 210 Bar	Steel - 350 Bar
Surface Treatment :	Alloy - Nil	Steel - Zinc Gold Passivation

Included Components

O-Ring Plate :	1 each HSC30P1H
O-Rings :	4 each N9-012
Locating Pin :	1 each Dia. 4 mm x 10 mm

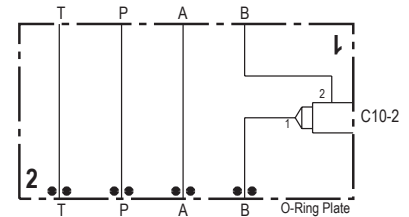
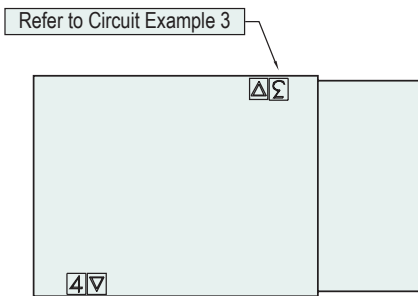


Technical Details



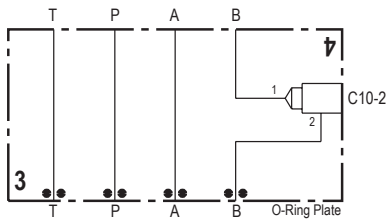
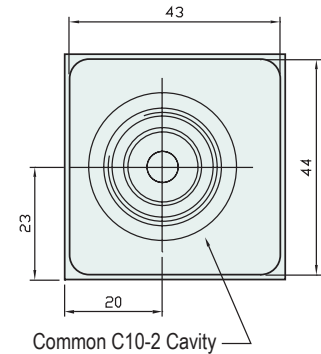
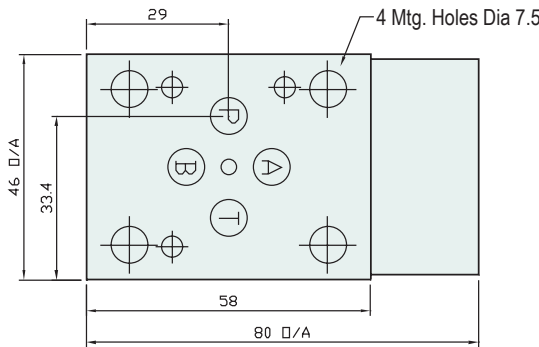
Circuit Option , Example 1

- 1 - Meter Out Flow Control - 'A'-Port
- 2 - Needle Valve Meter In and Out - 'A'-Port



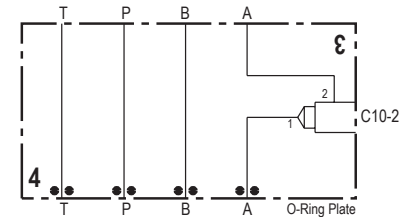
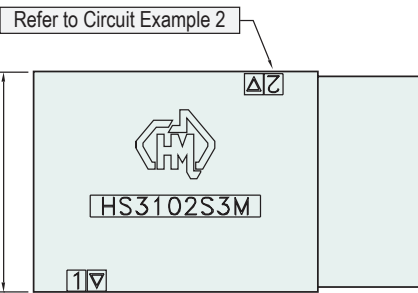
Circuit Option - Example 2

- 1 - Meter In Flow Control - 'B'-Port
- 2 - Needle Valve Meter In and Out - 'B'-Port



Circuit Option , Example 3

- 1 - Meter Out Flow Control - 'B'-Port
- 2 - Needle Valve Meter In and Out - 'B'Port



Circuit Option , Example 4

- 1 - Meter In Flow Control - 'A'-Port
- 2 - Needle Valve Meter In and Out - 'A'-Port

Part Number	Nominal Mass Kg
-------------	-----------------

HS3102S3H	1.5
HS3102S3M	0.5

HSC30P1H - O-Ring Plates
Also Available Separately

Industry Std. C10-2 Cavity Form Suitable for the Following Valve Manufacturers :
Modular , Delta , Parker , Hydraforce , Compact & Sterling

Please Ensure Valve Selection is Suitable for your Application
For More Information Contact H.M.A. Sales

SOLD SEPARATELY IF REQUIRED
COMMON RELIEF VALVE - RP100-ABN (Suits Alloy) - RP100-ACN (Suits Steel)