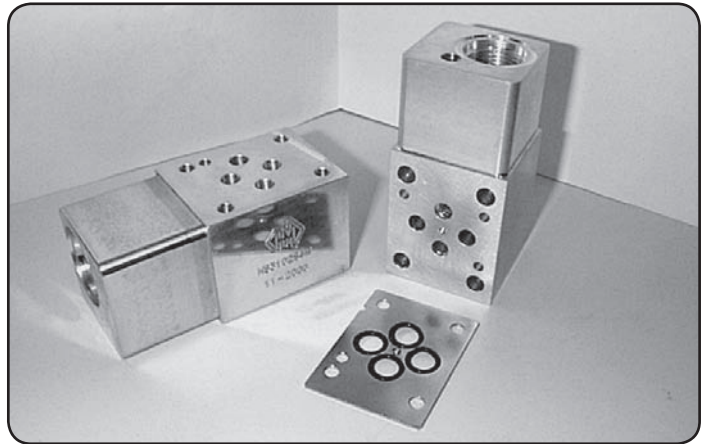
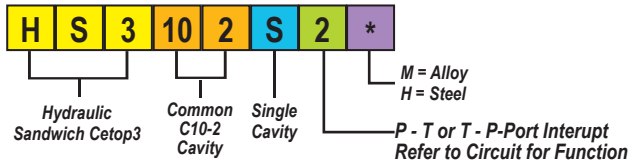




## CETOP3 P - T or T - P-Port Interupt



### Specifications

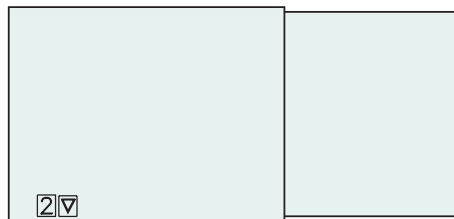
<b>Material :</b>	Alloy 6061-T6	Steel - S1214
<b>Max. Working Pressure :</b>	Alloy - 210 Bar	Steel - 350 Bar
<b>Surface Treatment :</b>	Alloy - Nil	Steel - Zinc Gold Passivation

### Included Components

<b>O-Ring Plate :</b>	1 each HSC3OP1H
<b>O-Rings :</b>	4 each N9-012
<b>Locating Pin :</b>	1 each Dia. 4 mm x 10 mm

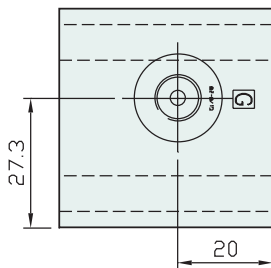
### Technical Details

Projection

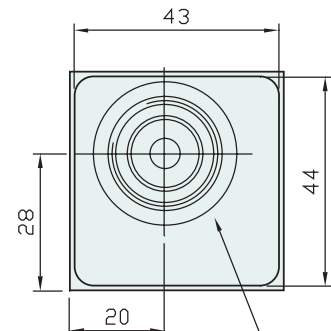
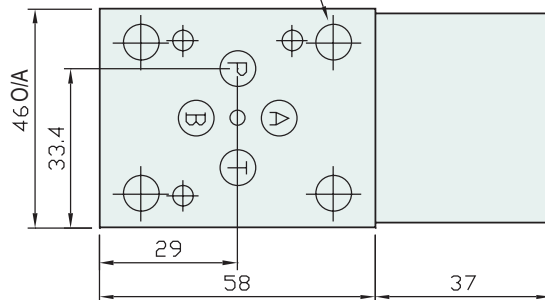


Refer to Circuit Example 2

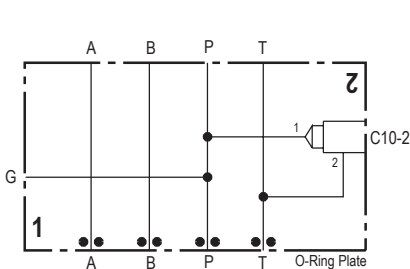
4 Mtg. Holes Dia 5.2



Gauge Port 1/8" BSPP

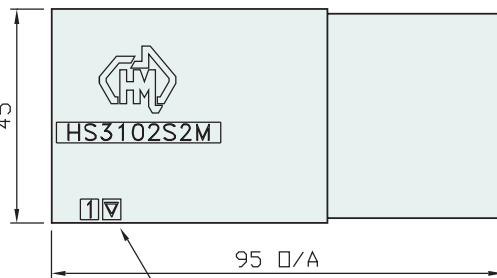


Common C10-2 Cavity

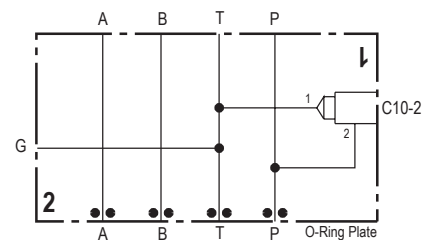


#### Circuit Option , Example 1

- 1 - N.C. Solenoid Valve 'P' to 'T'-Port
- 2 - N.O. Solenoid Valve 'P' to 'T'-Port
- 3 - Relief Valve 'P' to 'T'-Port
- 4 - Flow Control 'P' to 'T'-Port



Refer to Circuit Example 1



#### Circuit Option , Example 2

- 1 - N.C. Solenoid Valve 'T' to 'P'-Port
- 2 - N.O. Solenoid Valve 'T' to 'P'-Port
- 3 - Flow Control 'T' to 'P'-Port

Part Number	Nominal Mass Kg
HS3102S2H	1.5
HS3102S2M	0.5

HSC3OP1H - O-Ring Plates  
Also Available Separately

Industry Std. C10-2 Cavity Form Suitable for the Following Valve Manufacturers :  
**Modular , Delta , Parker , Hydraforce , Compact & Sterling**

Please Ensure Valve Selection is Suitable for your Application  
For More Information Contact H.M.A. Sales

**SOLD SEPARATELY IF REQUIRED**  
COMMON RELIEF VALVE - RP100-ABN (Suits Alloy) - RP100-ACN (Suits Steel)