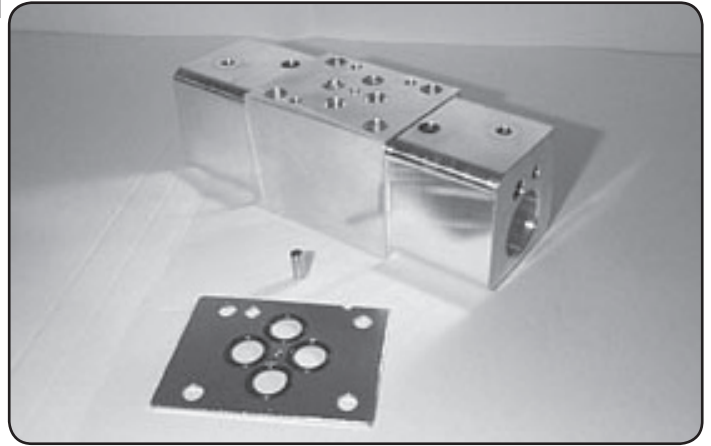
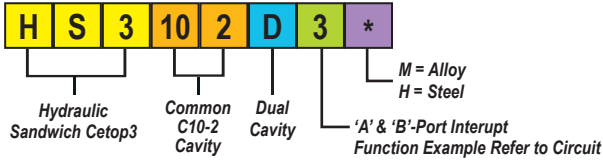


## A & B-Port Interrupt



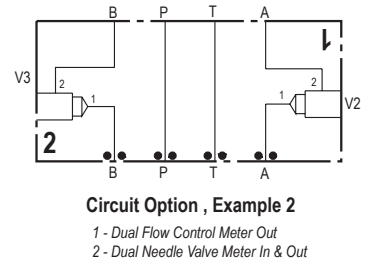
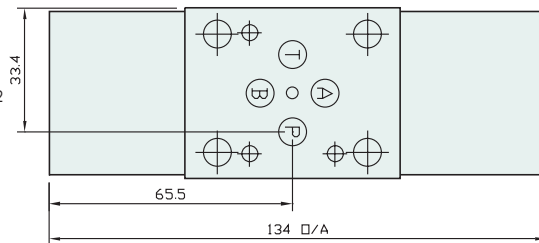
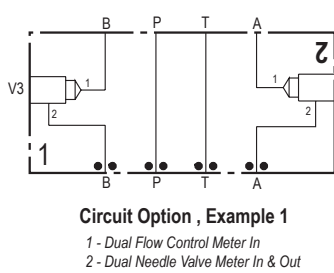
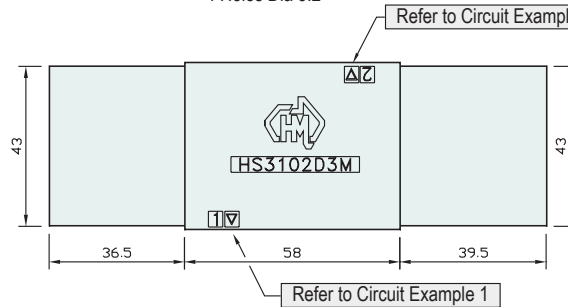
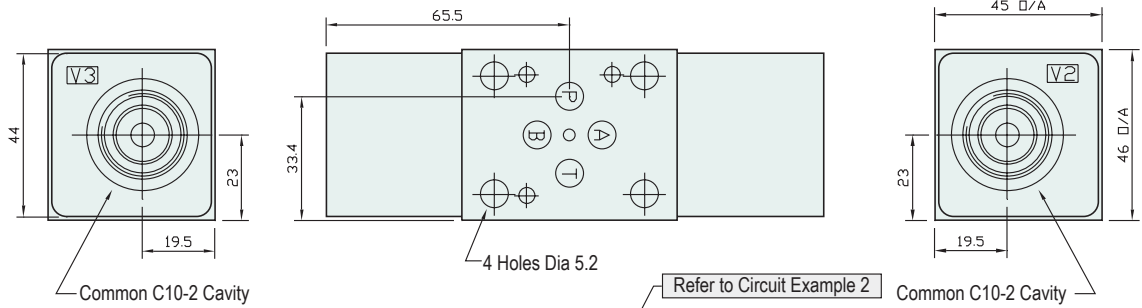
### Specifications

Material :	Alloy 6061-T6	Steel - S1214
Max. Working Pressure :	Alloy - 210 Bar	Steel - 350 Bar
Surface Treatment :	Alloy - Nil	Steel - Zinc Gold Passivation

### Included Components

O-Rings :	4 each N9-012
Locating Pin :	1 each Dia. 4 mm x 10 mm

### Technical Details



Part Number	Nominal Mass Kg
HS3102D3H	2.5
HS3102D3M	0.7

Industry Std. C10-2 Cavity Form Suitable for the Following Valve Manufacturers :  
**Modular , Delta , Parker , Hydraforce , Compact & Sterling**

Please Ensure Valve Selection is Suitable for your Application  
For More Information Contact H.M.A. Sales

**SOLD SEPARATELY IF REQUIRED**  
COMMON RELIEF VALVE - RP100-ABN (Suits Alloy) - RP100-ACN (Suits Steel)

**HSC30P1H** - O-Ring Plates  
Also Available Separately