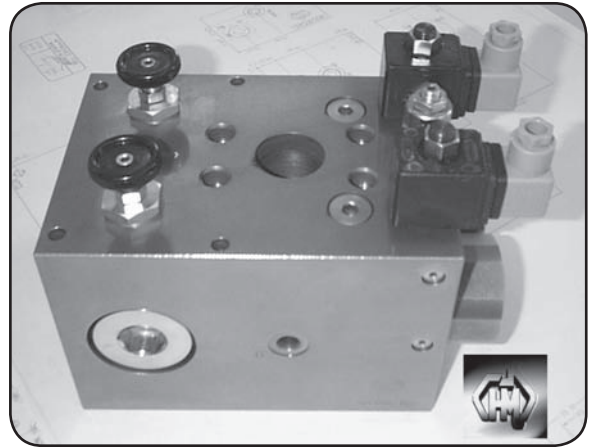


Specifications

Material : Steel - S1214
Max. Working Pressure : 350 Bar
Surface Treatment : Zinc Gold Passivation

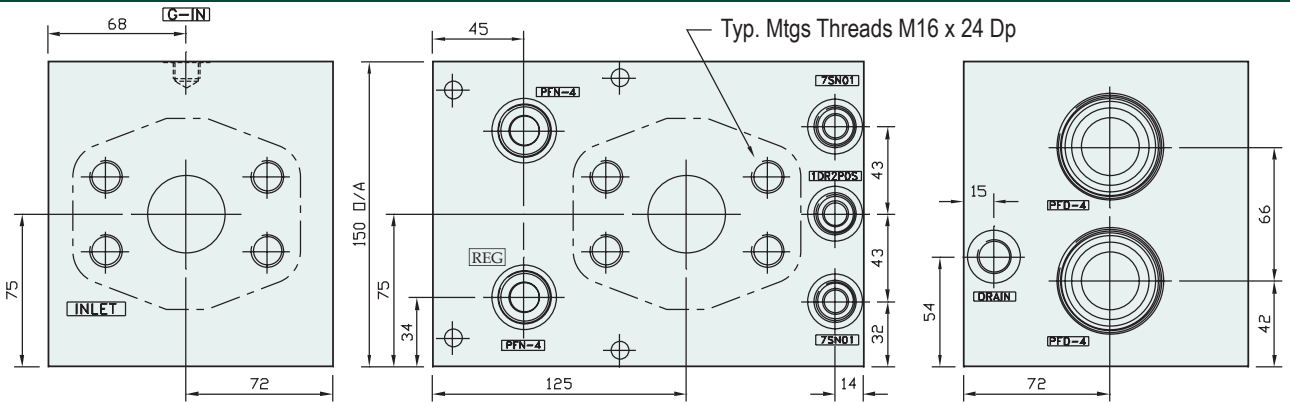
Included Components

Priority Flow Regulator : 2 each PFD-4
Priority Needle Valve : 2 each PFN-4
Solenoid Valve (S207V) & Coil: 12V (C13H12/22-12v) OR 24V (C13H24/22-24v)
Relief Valve : 1 each 1DR2P40S
Plugs : 2 each 5/16" UNF, 5 each 3/4" BSPP & 1 each 1/2" BSPP



HMVA

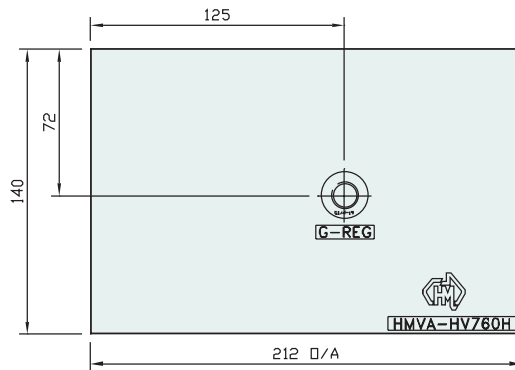
Technical Details



OPERATION

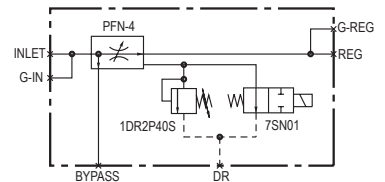
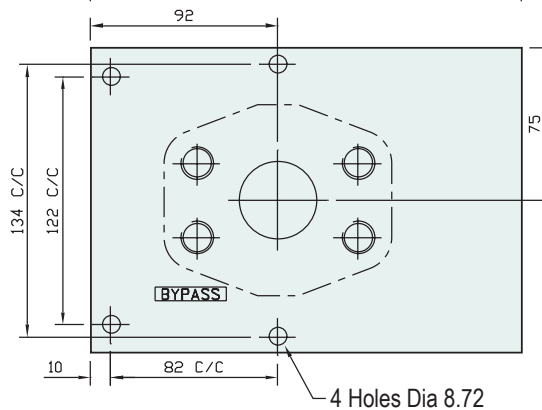
Inlet flow passes through the adjustable orifice and the radial holes in the spool/sleeve assembly then out of the regulated port.

Regulated Flow 390 L/min L/min



OPERATION

The adjustable relief valve vents the spring chamber at the pressure and diverts the flow to the bypass port. It may be necessary to fit a 10 bar check valve in the bypass or regulated line to ensure the valve switches fully.



Manifold Circuit



Part Number	Bypass Port	Reg Port	G-In Port	G-Reg Port	Inlet Port	Dr Port	Nominal Mass Kg
HMVA-HV760H	1-1/2" SAE-62	1-1/2" SAE-62	1/4" BSPP	1/4" BSPP	1-1/2" SAE-62	1/4" BSPP	20.0