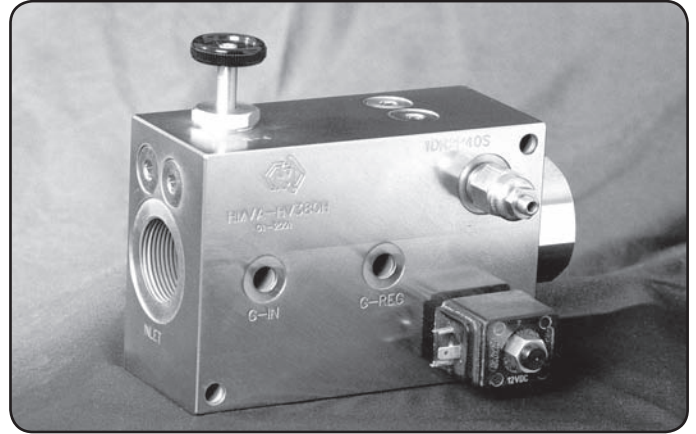


Specifications	
Material :	Steel - S1214
Max. Working Pressure :	350 Bar
Surface Treatment :	Zinc Gold Passivation
Included Components	
Priority Flow Regulator :	1 each PFD-4
Priority Needle Valve :	1 each PFN-4
Solenoid Valve (S207V) & Coil :	12V (C13H12/22-12v) OR 24V (C13H24/22-24v)
Relief Valve :	1 each 1DR2P40S
Plugs :	4 each 3/4" UNF , 3 each 5/16" UNF

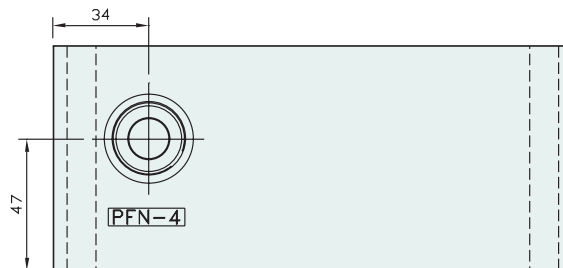


Technical Details

OPERATION

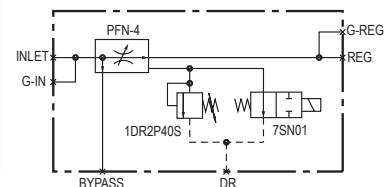
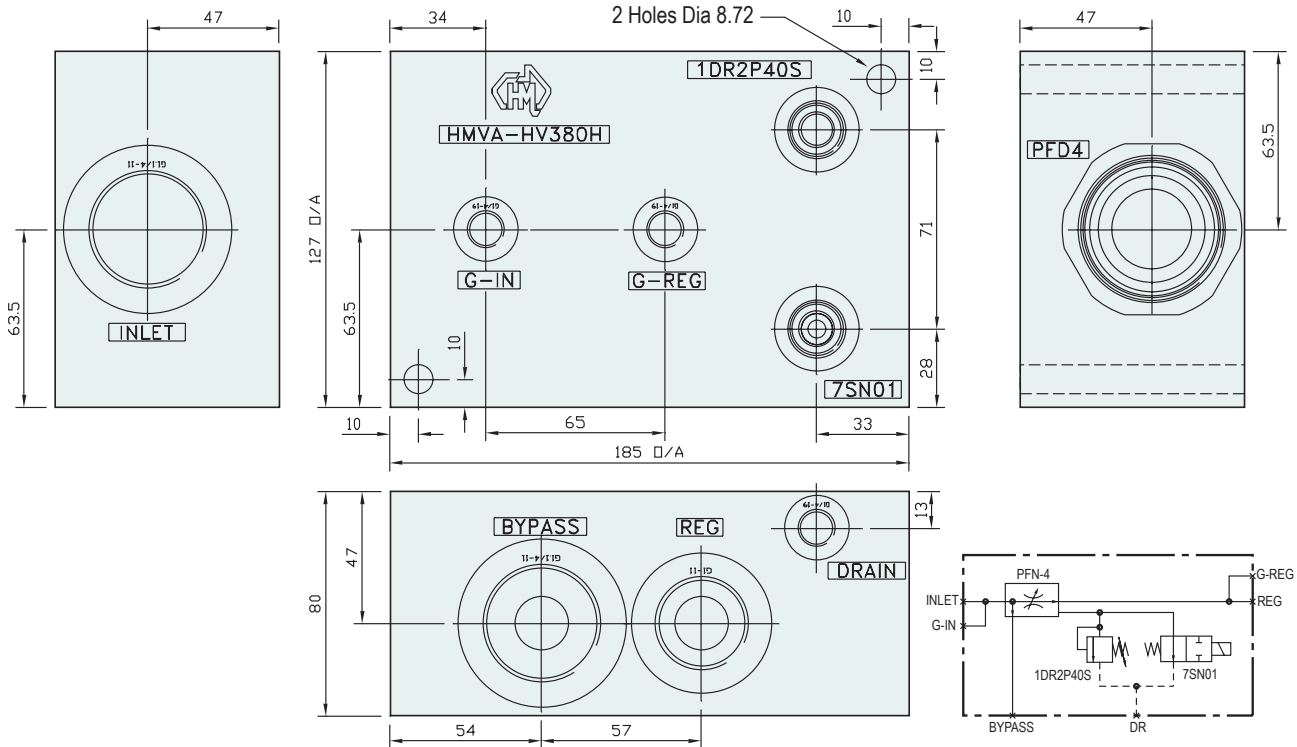
Inlet flow passes through the adjustable orifice and the radial holes in the spool/sleeve assembly then out of the regulated port.

Regulated Flow 195 L/min



OPERATION

The adjustable relief valve vents the spring chamber at the pressure and diverts the flow to the bypass port. It may be necessary to fit a 10 bar check valve in the bypass or regulated line to ensure the valve switches fully.



Manifold Circuit

Part Number	Bypass Port	Reg Port	G-In Port	G-Reg Port	Inlet Port	Dr Port	Nominal Mass Kg
HMVA-HV380H	1-1/4" BSPP	1" BSPP	1/4" BSPP	1/4" BSPP	1-1/4" BSPP	1/4" BSPP	10.0