



Hydraulic Manifold

Cetop8

Series

M = Alloy
H = Steel

S = Sun Relief Cavity T16-A
Omit If Relief Not Required

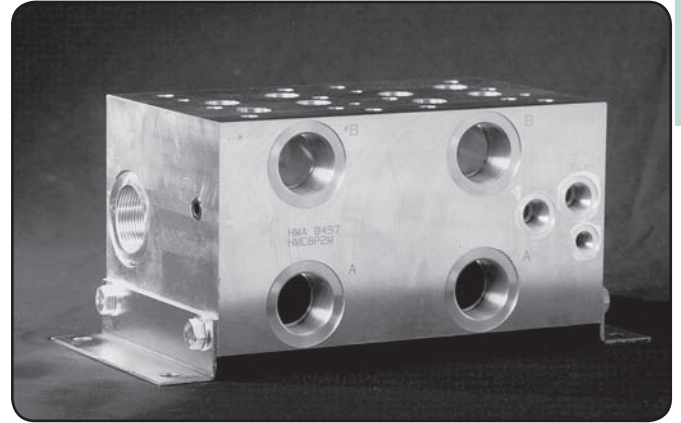
No. of Stations

Specifications

Material :	Alloy 6061-T6	Steel - S1214
Max. Working Pressure :	Alloy - 210 Bar	Steel - 350 Bar
Surface Treatment :	Alloy - Nil	Steel - Zinc Gold Passivation
Port Sizes :	P - 1-1/4" BSPP T - 1-1/2" BSPP A & B - 1-1/4" BSPP G - 1/4" BSPP X&Y - 3/8" BSPP	

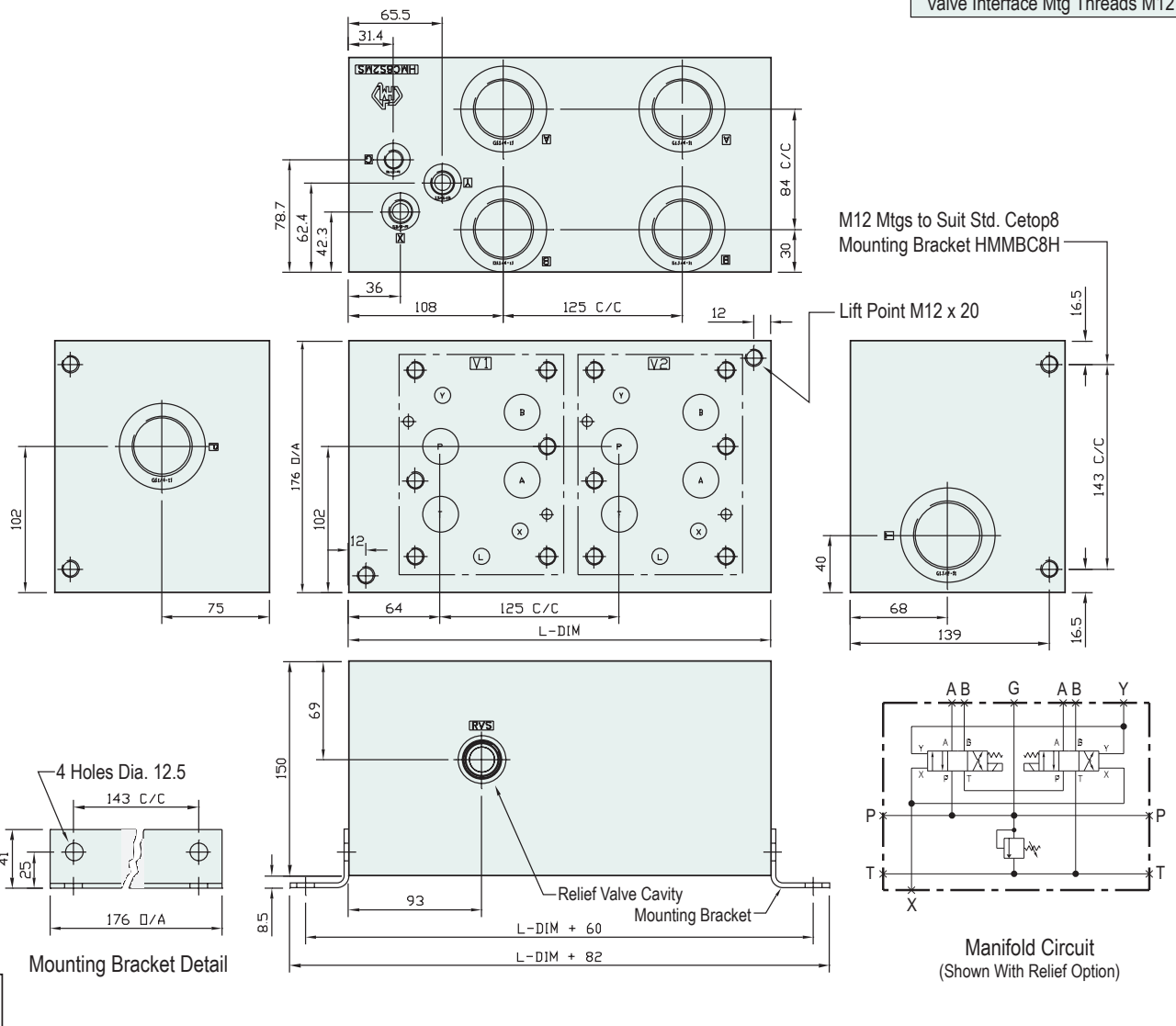
Included Components

Mounting Brackets :	2 each HMMBC8H
Hex. Head Set Screws :	8 each M12 x 25
Flat Washers :	8 each M12



CETOP8

Technical Details



Manifold - Without Relief Cavity

Part Number	Steel	
	L Dim	Nominal Mass Kg
HMC8S2H	295	48.0

Alloy

Part Number	Alloy	
	L Dim	Nominal Mass Kg
HMC8S2M	295	16.0

Manifold - With Relief Cavity

Steel		Alloy	
Part Number		Part Number	
HMC8S2HS		HMC8S2MS	

3 OR MORE STATIONS MADE TO ORDER

RELIEF VALVES SOLD SEPARATELY

SUN RELIEF VALVE RPIC-LAN (Suits Alloy)
SUN RELIEF VALVE RPIC-LCN (Suits Steel)