

CETOP 3

Specifications

Material :	Alloy - 6061-T6	Steel - S1214
Max. Working Pressure :	Alloy - 210 Bar	Steel - 250 Bar
Surface Treatment :	Alloy - Nil	Steel - Zinc Gold Passivation
Port Sizes :	P & T - 1/2" BSPP	A & B - 3/8" BSPP
	G - 1/4" BSPP	LS - 1/8" BSPP

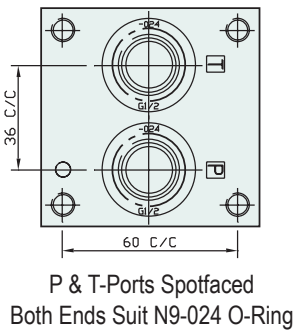
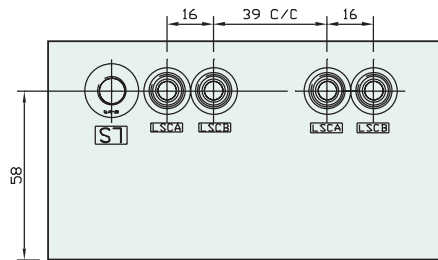
Included Components

Mounting Brackets :	2 each HMMBC3H
Hex. Head Set Screws :	8 each M8 x 16
Socket Head Cap Screws :	(Inc. 2 x M6 Nuts) 2 each M6 x 75
Flat Washers :	8 each M8
O-Rings : (For Module Mtg)	2 each N9-024
HVLSL Load Sense Check Valves :	2 each Station
Orifice Plugs : (Where Internal Bleed Option is Required)	1/16" NPT

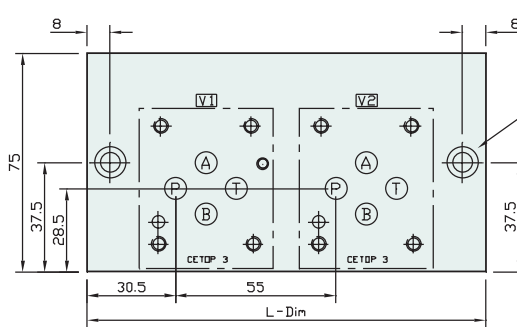
Technical Details



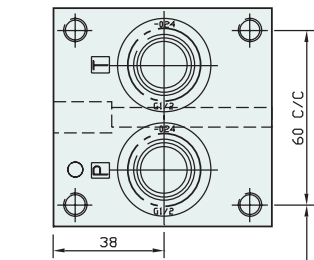
Valve Interface Mtg Threads M5



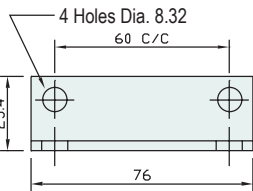
P & T-Ports Spotfaced
Both Ends Suit N9-024 O-Ring



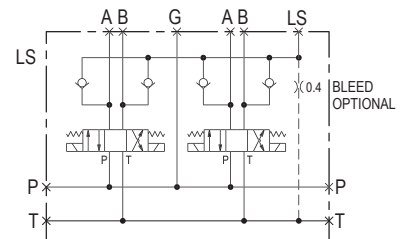
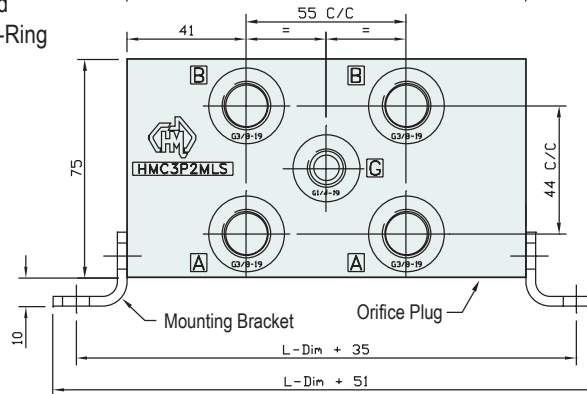
Mtgs to Suit M6 x 75 S.H.C.S.



M8 Mtgs to Suit Std. Cetop3
Mounting Bracket HMMBC3H



Mounting Bracket Detail



Manifold Circuit
(Shown With Internal Bleed Option)

Steel

Part Number	L Dim	Nominal Mass Kg
HMC3P1HLS	82	3.6
HMC3P2HLS	137	4.6
HMC3P3HLS	192	6.5
HMC3P4HLS	247	8.3
HMC3P5HLS	302	10.2
HMC3P6HLS	357	12.5



CP-104 - Load Sense Check Valves
Available Separately

Alloy

Part Number	L Dim	Nominal Mass Kg
HMC3P1MLS	83	1.8
HMC3P2MLS	137	2.5
HMC3P3MLS	192	3.2
HMC3P4MLS	247	3.9
HMC3P5MLS	302	4.6
HMC3P6MLS	357	5.4

ALL STEEL MANIFOLDS MADE TO ORDER

Internal Bleed Function Is Available on Request

4 - 8 STATION MANIFOLDS MADE TO ORDER