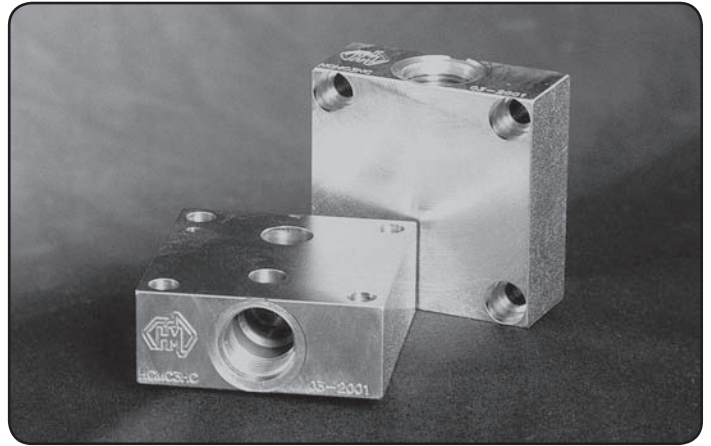




CETOP3



H = Hydraulic Cavity Module
C = Cetop3
M = Steel
3 = 3 ports
H = Sun Relief Cavity T10-A
***** = Common Relief Valve C10-2
 Omit if No Relief Required



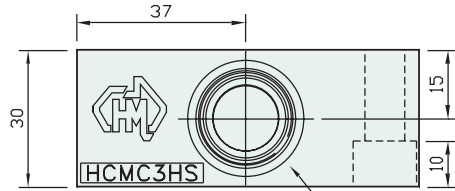
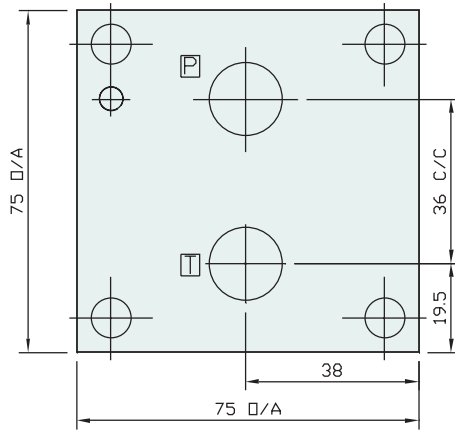
Specifications

Material : H = Steel - S1214
Max. Working Pressure : Steel - 350 Bar
Surface Treatment : Steel - Zinc Gold Passivation

Included Components

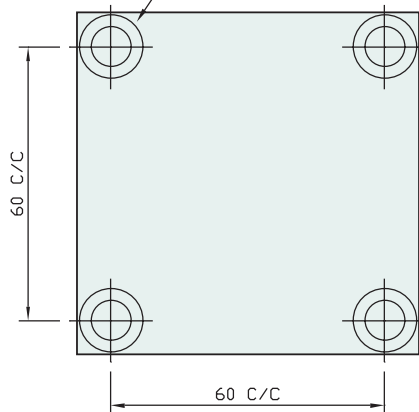
Socket Head Cap Screws : 4 each M8 x 35
Dowel Pin : 1 each 4mm Dia

Technical Details

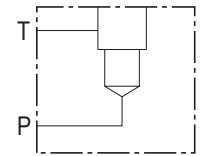


Relief Valve Cavity

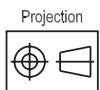
Mtgs to Suit M8 x 35 S.H.C.S.



INTERFACES TO LEFT OR RIGHT HAND END OF H.M.A. CETOP3 MANIFOLDS



Manifold Circuit



Cavity Module - With Common Relief Cavity

Part Number	Nominal Mass Kg
HCMC3HC	1.3

RELIEF VALVES SOLD SEPARATELY

SUN RELIEF VALVE	T10-A	RPEC-LCN
COMMON RELIEF VALVE	C10-2	RP100-ACN

Cavity Module - With Sun Relief Cavity

Part Number	Nominal Mass Kg
HCMC3HS	1.3