



Hydraulic Blanking Plate
Cetop5
X & Y Ports
M = Alloy
H = Steel

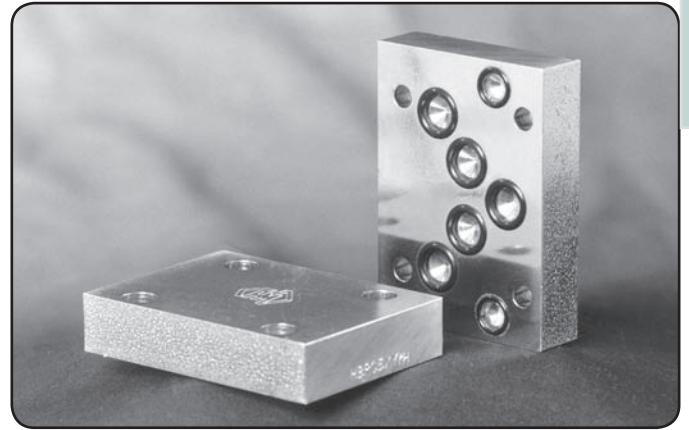
Specifications

Material : M = Alloy 6061-T6 H = Steel - S1214
Max. Working Pressure : Alloy - 210 Bar Steel - 350 Bar
Surface Treatment : Alloy - Nil Steel - Zinc Gold Passivation

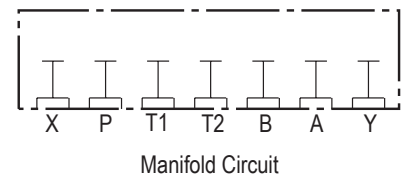
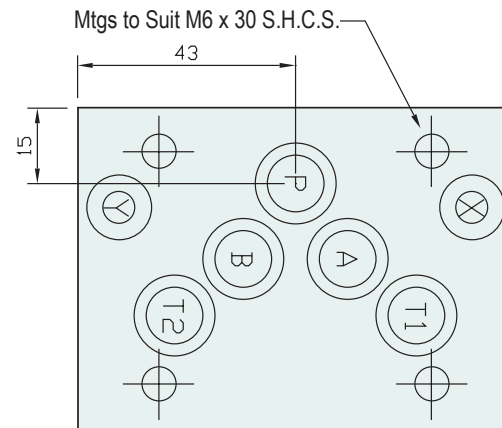
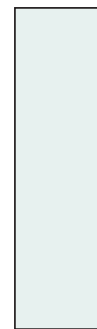
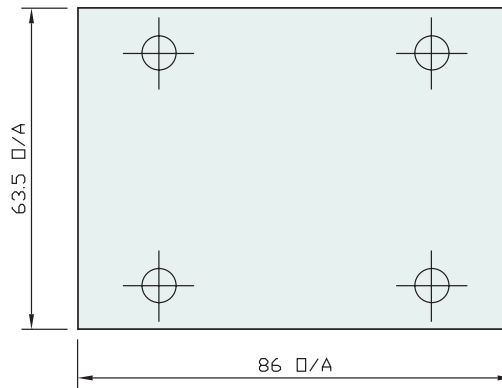
Included Components

Socket Head Cap Screws : 4 each M6 x 30
O-Rings : 2 each N9-012 , 5 each N9-014

Technical Details



CETOP5



Part Number	Nominal Mass Kg
HBPC5XYH	0.7
HBPC5XYM	0.3