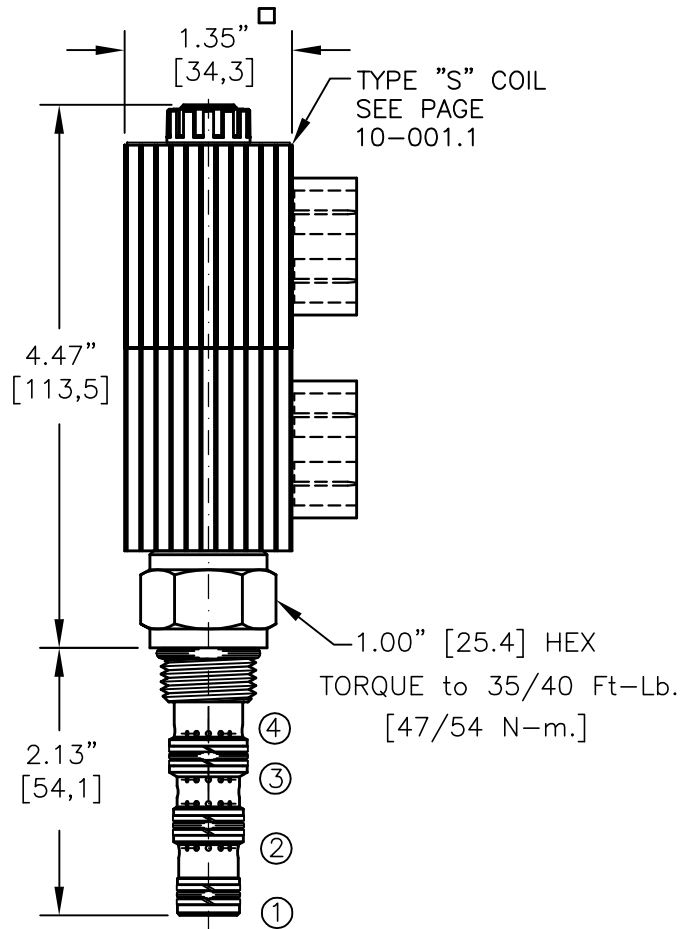
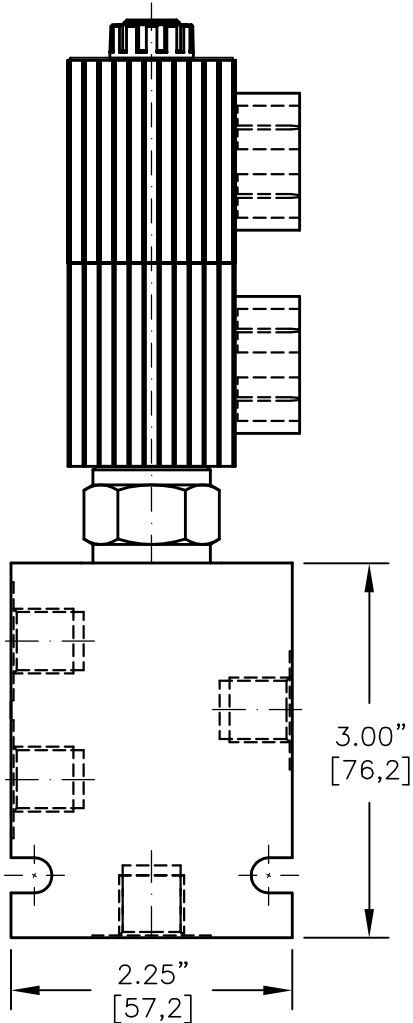
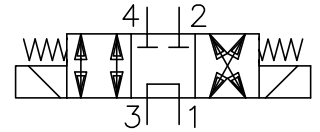




# SOLENOID VALVE, 4-WAY, 3-POSITION. DIRECT ACTING SPOOL



NOTES:

1. FOR ALUMINUM OR STEEL VALVE HOUSING CONFIGURATIONS SEE PAGE 0-041.1
2. SOLENOIDS AVAILABLE WITH DIODES - CONSULT FACTORY.
3. FOR "AC" COILS USE RECTIFIED DIN CONNECTOR 20828.

### EMBV-08-X-4J-X-XXX X

BASIC

SIZE  
08 = 3/4"-16UNF

SEALS  
N = BUNA "N"  
V = VITON

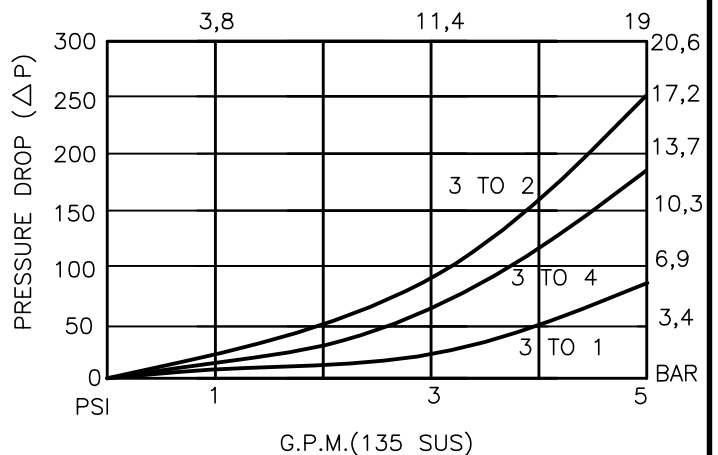
TYPE  
4J = "J" SPOOL  
4-WAY, 3-POSITION

PORTS  
0 = CARTRIDGE ONLY  
02BX = G 1/4" BSSP  
06TX = SAE - #6  
"A" = ALUM. HOUSING  
"S" = STEEL HOUSING

TERMINALS  
L=18GA. 24" LEADS  
T=SPADE TERM.  
B=BOLT TERM.  
G=DIN43650  
W=WEATHER-PACK  
D=DEUTSCH-DT04-2P  
M=METRI-PACK CONN.

VOLTAGE	AMPS
12D = 12 VDC	1.7
24D = 24 VDC	.9
36D = 36 VDC	.6
48D = 48 VDC	.5
115D = 115 VDC	.2

L/M (28,5 cSt)





## SOLENOID VALVE 4-WAY, 3-POSITION, SPOOL TYPE

### DESCRIPTION

This unit is a FOUR-WAY, THREE POSITION, cartridge type, spool type, direct acting, screw in type, solenoid operated, double coil, bidirectional tandem center selector valve.

### OPERATIONS

At the initial position, this valve allows flow between ports 3 & 1 and blocks ports 2 & 4.

When the upper solenoid coil is energized, the spool in this valve is shifted and allows flow between ports 2 and 3 and ports 1 and 4.

When the lower solenoid coil is energized, the spool in this valve is shifted and allows flow between ports 3 and 4 and ports 2 and 1.

### FEATURES AND BENEFITS

Continuous-duty, very low heat rise & waterproof solenoid coil.

Interchangeable solenoid coils & terminations options available.

Hardened precision fitted spool & sleeve provides reliable, long life.

Very efficient, wet-armature solenoid core tube construction.

All external carbon steel parts are plated for longer life against the elements. All cartridge valves are 100% functionally tested.

Industry common cavity.

### SPECIFICATIONS

OPERATING PRESSURE: 5,000 PSI [350 Bar]

PROOF PRESSURE: 10,000 PSI [700 Bar]

FLOW: 4.0 GPM [15 l/m] max. See performance chart.

INTERNAL LEAKAGE: 20cu.in/min [328 cc/m] @ 5,000 PSI [350 Bar]

VALVE HOUSINGS: 2500 PSI [175 Bar] = Aluminum - Anodized.

5000 PSI [350 Bar] = Steel - Unplated.

OPERATING TEMPERATURE: -40° to +250° F. [-40° to +120° C.]

OPERATING MEDIA: All general purpose hydraulic fluids such as MIL-H-5606, SAE-#10, SAE-#20, etc.

RESPONSE TIME: First indication of change in pressure with 100% voltage supplied @ 80% of nominal flow rating.

\* Pull-in: 50 ms

\* Drop-Out: 50 ms

SEAL KIT: SKN-0842 Buna "N"

SKV-0842 Viton

WEIGHT: 1.52 lb [.69 kg] cartridge with coil only.

VALVE CAVITY: #C0840, See Page 0-041.1.