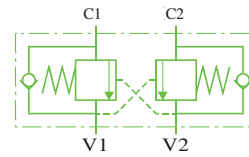
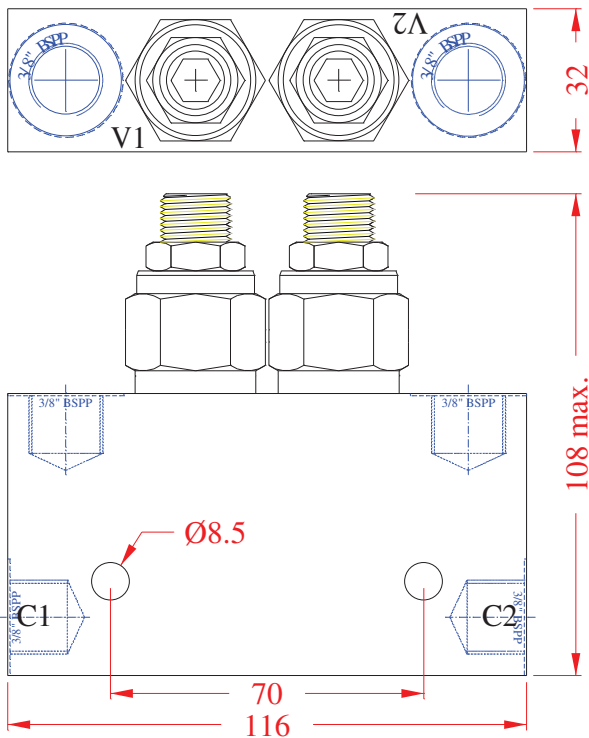


DIMENSIONS



DESCRIPTION: The DOCV50 dual overcentre valve is an ultra-compact unit, for use in high pressure hydraulic circuits.

OPERATION: The valves provide smooth control over hydraulic cylinders and motors, preventing them from 'running away' due to load induced forces. Pilot ratio is 4:1.

FEATURES:

- Ultra compact.
- Ductile iron housing.
- All cartridges 100% factory tested.
- Leakproof 8 m.m. screw adjuster.
- Tamper evident adjuster cover option (P/N 20122) (2 required).
- Desired settings may be locked.
- Captive adjusters cannot be backed out of cartridges.
- Overpressure protected - springs cannot be wound solid.

SPECIFICATIONS:

- OPERATING PRESSURE: 345 bar (5000 p.s.i.) max.
- PILOT RATIO: 4:1
- MEDIA: general purpose hydraulic fluids @ -40° c to +120° c.
- FLOW: See performance chart.
- WEIGHT: 1.7 Kg.
- MATERIALS: All working parts are hardened steel, except seals.
- Standard seals are Buna N with teflon backups. Viton seals are available on special order.

IMPORTANT PRECAUTIONS

- ◆ Directional valves with motor spools (service ports connected to tank in neutral) should always be used in conjunction with these valves.
- ◆ All ports are B.S.P. parallel, and appropriate fittings must be used. Tapered fittings are not acceptable.
- ◆ Ports C1 & C2 should always be connected directly to the actuator port or by a solid line of adequate strength, to minimise the possibility of line rupture and consequent system failure.
- ◆ **Failure to correctly install or set these valves may result in damage to property, personal injury or death.**

ORDERING CODE

DOCV50-20

VALVE SERIES

PRESSURE SETTING RANGE