

Admira®

LIGHT-CURING RESTORATIVE MATERIAL BASED
ON ORMOCER®S



THE ORMOCER® RESTORATIVE SYSTEM

The Admira restorative system is the result of successful Ormocer research, jointly undertaken by VOCO and the Fraunhofer Institute for Silicate Research in Würzburg, Germany (Ormocer = **O**rganic **M**odified **C**eramics). Admira is the world's first Ormocer restorative material and is well established in modern restorative treatment. In combination with the flowable variant Admira Flow and together with Admira Bond, all types of restorations can be placed with high biocompatibility.

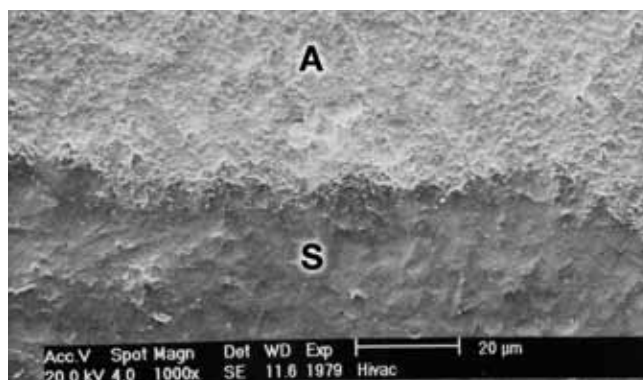
Ormocer®s

Ormocers consist of a network of large, prepolymerised molecules of an inorganic matrix. This means that the Ormocers, due to their cross-linked, chemical structure, show an even higher biocompatibility than conventional composites. The Ormocer compound molecules also ensure Admira's particularly low shrinkage (1.97 Vol.%). The Ormocers offer especially high quality where colour stability is concerned, which guarantees a permanently aesthetic and stable restoration, and therefore a satisfied patient.

Clinical trials

The durability and quality of Admira restorations has been proven in a variety of in-vivo studies. One study at the University of Bologna examined 100 Class II restorations after three years and evaluated all restorations as "intact and predominantly clinically sound"¹. A study at the University of Leipzig showed a retention rate of 100 % for Admira Class I and II restorations after two years². A study of the treatment of extensive Class II cavities at the University of Würzburg showed only two failures after two years in a follow-up examination of 83 restorations, which represents a success rate of over 97%³. In addition to this is a study at the University of Istanbul which, given a retention rate of 91% after two years, evaluated all examined Class V restorations as free of secondary caries⁴. These in-vivo examinations thereby confirm that Admira is also highly suitable as a permanent and aesthetic restoration in molars and premolars.

In a micromorphological study at the University of Dresden, the transitions between the Admira restoration and the tooth enamel were shown to be seamless⁵.



SEM image: The seamless transition between the Admira restoration (A) and the enamel (S) illustrates the excellent bonding of Admira/Admira Bond to the dental hard tissue and confirms the good results of the in-vivo studies.

Admira® – outstanding aesthetics

Admira is not only highly polishable, it also features impressive natural aesthetics. The two following before and after comparisons show restorations that were optimally treated with Admira.



Source: J. Manhart, 2001

¹ Dondi Dall'Orologio et al; Universität Bologna, 2005, IADR 2005 Baltimore, USA, Abstract # 0582.

² Merte et al. Universität Leipzig, 2004, data on file, VOCO GmbH.

³ Denner, Orth, Klaiber und Hugo, Universität Würzburg, Jahrestagung DGZ 2004, Wuppertal, Vortrag # 49

⁴ Koray et al. Universität Istanbul, 2004, data on file, VOCO GmbH

⁵ Klimm et al. Schweizer Monatsschr Zahnmed. 2004; 114(2):104-14.

Admira® Flow

THE FLOWABLE VARIANT

With Admira Flow, VOCO also offers a flowable, light-curing restorative material based on Ormocer, which is characterised by good flowability and high material elasticity. The material is highly thixotropic, that is, it flows when applied and handled and is stable when resting. Due to its material elasticity, Admira Flow is suitable as a stress-absorbing lining material, particularly when used in combination with Admira Bond. Admira Flow offers further advantages due to its time saving application and excellent wetting properties.

The flowable composite is equally as biocompatible and resistant to shrinkage as the packable Admira variant. As Admira Flow is highly translucent and its shade matches exactly that of Admira, aesthetic restorations are quick and easy to realise with a combination of both materials.

Indications for Admira® Flow

- Restorations with minimally invasive preparation techniques
- Restoration of small cavities
- Extended fissure sealing
- Blocking out undercuts
- Lining or coating cavities (CBF technique, lining technique)
- Restorations of Class III to V cavities
- Repair of restorations and veneers
- Attachment of translucent restorations (e.g. all-ceramic crowns, veneers)

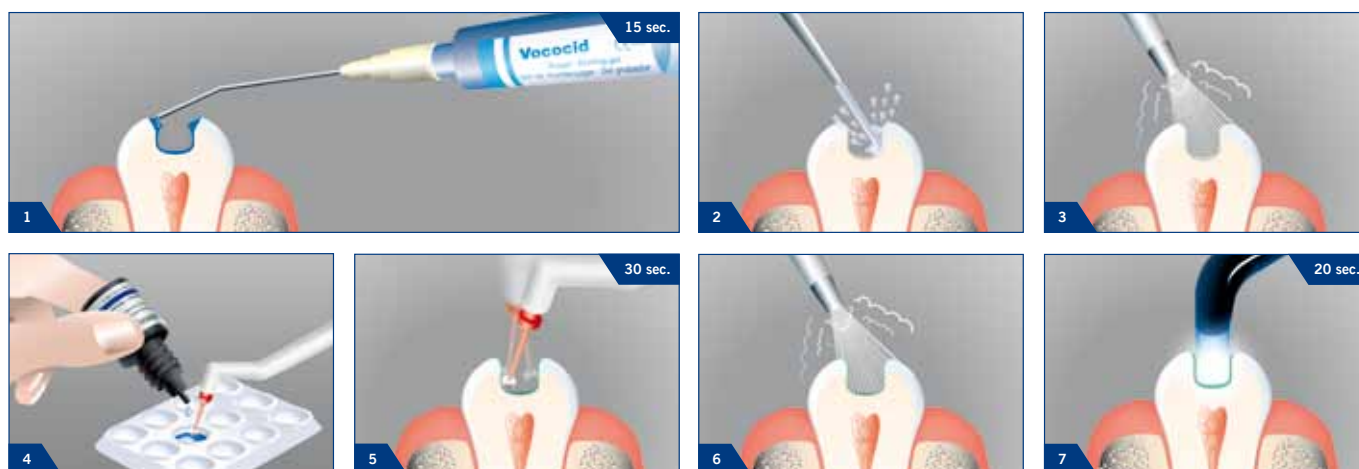
Admira® Bond

SECURE HOLD

The universal, light-cured dentine enamel bond is also based on Ormocer research. A strong and stable bond between the restorative materials and the dental hard tissue is essential for a restoration free of marginal deficiencies. Admira Bond

helps to realise this desirable bond. Due to the application of only one single component, Admira Bond is particularly simple and quick to use and, like Admira and Admira Flow, is highly biocompatible.

APPLICATION



Admira®

LIGHT-CURING RESTORATIVE MATERIAL BASED ON ORMOCER®S

Indications

- Class I to V restorations
- Reconstruction of anterior teeth damaged by trauma
- Facetting on discoloured anterior teeth
- Corrections of shape and colour to improve aesthetics
- Interlocking and splinting loose teeth
- Facet repairs
- Crown build-up restorations
- Composite inlays

Presentation

Admira®

- REF 2420 Set of 7 × 4 g syringes (A2, A3, A3.5, B2, B3, C2, OA2), 5 ml Vococid gel, 4 ml Admira Bond, shade guide, accessories
- REF 2431 Triset of 3 × 4 g syringes (A2, A3, A3.5), 5 ml Vococid gel, 4 ml Admira Bond, accessories

Measuring syringe 4 g each		25 caps of 0.25 g	
REF 2421 A1	REF 2430 OA2	REF 2451 A1	
REF 2422 A2	REF 2437 BL	REF 2452 A2	
REF 2423 A3	REF 2429 I	REF 2453 A3	
REF 2424 A3.5		REF 2454 A3.5	
REF 2425 A4		REF 2458 A4	
REF 2426 B2		REF 2455 B2	
REF 2427 B3		REF 2456 B3	
REF 2428 C2		REF 2457 C2	

Product advantages

- Outstanding biocompatibility
- Excellent aesthetics
- Proven over many years
- Non-sticky, sculptable, good marginal adaptation
- Less shrinkage than conventional composites
- Thermal expansion similar to that of dental tissue
- Very good dentine and enamel bonding with Admira Bond
- High abrasion resistance and colour stability
- Ideal for all restoration classes

Admira® Flow

- REF 2481 Triset of 3 × 1.8 g syringes (A2, A3, A3.5), 5 ml Vococid gel, 4 ml Admira Bond, shade guide, accessories

Syringes 2 × 1.8 g each		25 caps of 0.25 g	
REF 2486 A1		REF 2491 A1	
REF 2482 A2		REF 2492 A2	
REF 2483 A3		REF 2493 A3	
REF 2484 A3.5		REF 2494 A3.5	

Admira® Bond

- REF 2432 Bottles 2 × 4 ml



VOCO GmbH
 Anton-Flettner-Straße 1-3
 27472 Cuxhaven
 Germany
 Tel.: +49 (0) 4721-719-0
 Fax: +49 (0) 4721-719-140
 info@voco.com
 www.voco.com

Available from: