

BRUX CHECKER®

acc. to Prof. Sato



The BRUX CHECKER® foil registers through abrasion occlusal interferences like bruxism. The evaluation of these grinding patterns allows conclusions on the kind of interference and helps in finding adequate therapies. The foil is moulded over the patients model and worn for one night.



BRUX CHECKER® is best suited as an indicator for diagnosis and therapy planing for TMJ treatment and to check occlusion after prosthodontic treatment.

BRUX CHECKER® is a one sided colour coated analysis and diagnostic foil (0,1 mm thickness), which was developed by Prof. Sadao Sato from the Kanagawa Dental College in Japan and has been successfully applied since 2000.

The BRUX CHECKER® foil is moulded over the patient's maxillary and/or mandibular cast. The coated side of the foil has to be facing the antagonist after moulding. When working with the BIOSTAR®/MINISTAR® or TWINSTAR® this is easily achieved by placing the foil with the printed side facing upwards so that the coding/imprint is readable. When working with other machines, please verify the corresponding heating system.

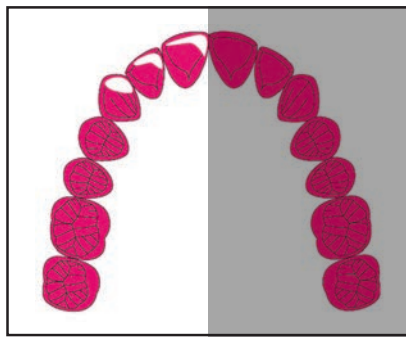
The cast is placed with trimmed bottom on the platform of the machine. The model should be dry. Isolation is not necessary. After moulding the foil can be cut with scissors or scalpel. In order to achieve a tight fit, the foil should cover the teeth completely.

You may insert a BRUX CHECKER® foil, too, alternately for 2 nights each in the upper and then 2 nights each in the lower jaw.

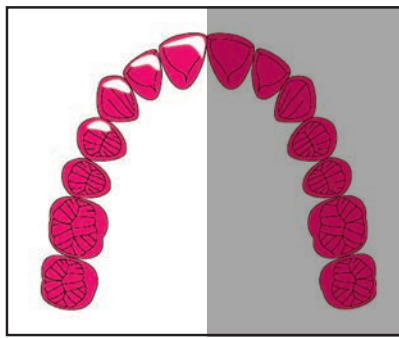
Classification of grinding patterns acc. to Prof. Sato

(Atlas Occlusion Diagnosis by BruxChecker, Kanagawa Dental College)

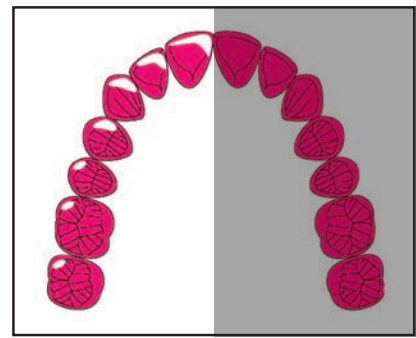
LATEROTRUSION SIDE



ICG:
Incisors, canine guiding type

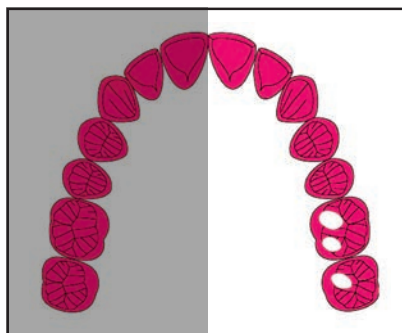


ICPG:
Incisors, canine, premolar guiding type

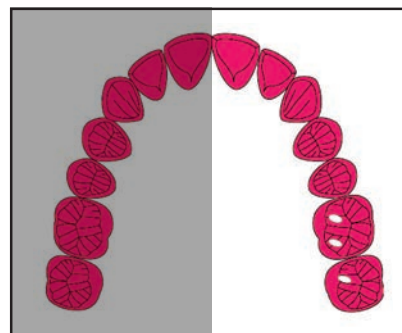


ICPM:
Incisors, canine, premolar,
molar guiding type

MEDIOTRUSION SIDE



MG:
Mediotrusive grinding type



MC:
Mediotrusive contact type

DELIVERY PROGRAM:

BRUX CHECKER® Foil (0,1 x 125 mm rd.) 10 pcs. REF 3209
BRUX CHECKER® Foil (0,1 x 120 mm rd.) 10 pcs. REF 0760
(incl. 5 patient information sheets)

Patented worldwide

Literature:

- K. Onodera. The use of a bruxchecker in the evaluation of different grinding patterns during sleep bruxism Cranio. 2006 Oct; 24(4):292-9
- www.kdcnet.ac.jp/college/occmcd/brux-e.htm

SCHEU-DENTAL GmbH
www.scheu-dental.com

phone +49 23 74 92 88-0
fax +49 23 74 92 88-90

Am Burgberg 20
58642 Iserlohn · Germany

Download under:
www.scheu-dental.com,
Downloads, Miscellaneous

ATLAS
Occlusion Diagnosis
by
BruxChecker

SCHEU
Dental Technology

