

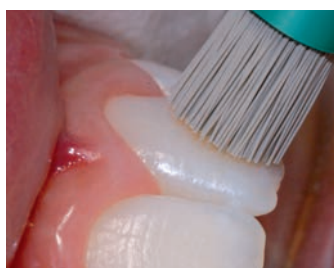
Intensiv UniglossCellbrush^{Pat.Pend.EP10405114}

Clinically tested and scientifically approved by the University of Zurich, Switzerland

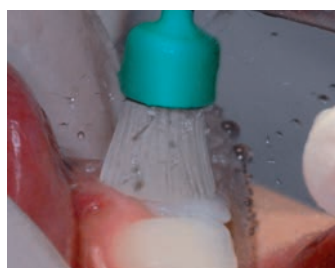
Never achieved high gloss and completely smooth surfaces of aesthetic restorations with polishing brushes due to new diamond-filled from hard to soft variable cellulose-filaments

New!

Clinical pictures: Dr. Simona Giani, Varese, Italy



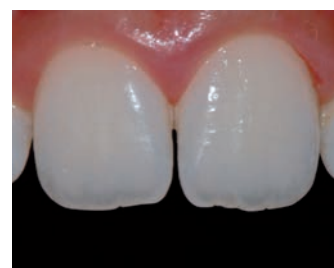
- UniglossCellbrush one-step high gloss polishing with hard filaments; 5000 rpm and slight pressure of 200 g; application after the 15 µm (yellow) rotating diamond instruments



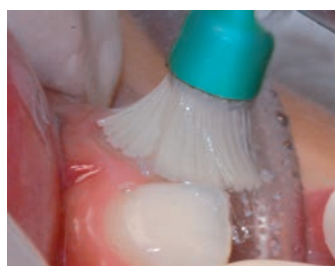
- The cellulose-filaments change through water absorption from hard to ultra-soft



- UniglossCellbrush high gloss polishing with soft filaments; 5000 rpm and slight pressure

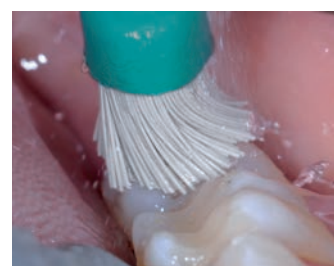


- Never achieved high gloss polishing results* with UniglossCellbrush



- Adaptive to concave tooth morphology, totally atraumatic and preserves gingiva

Preserves the operative achieved tooth anatomy (macro-morphology) (non destructive high gloss polishing)

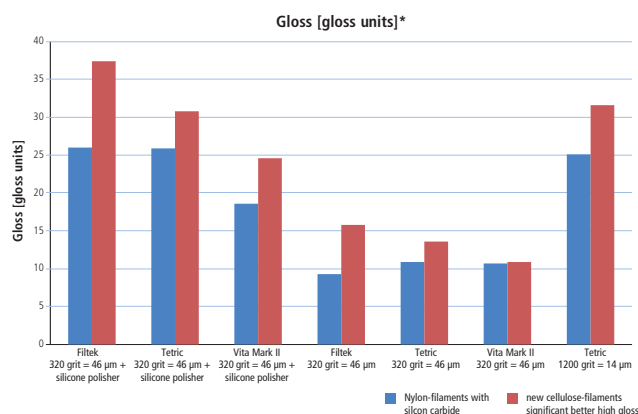


- Adaptive to convex tooth-morphology; low vibration



5'000 rpm

Slow speed & slight pressure = superior polishing results



*scientifically approved by the University of Zurich, Switzerland

Intensiv SA
6926 Montagnola
Switzerland

Tel. +41 91 986 50 50
Fax +41 91 986 50 59
info@intensiv.ch
www.intensiv.ch

Intensiv
Swiss Dental Products