



Cavex is committed to the sales of sophisticated, total systems whereby each individual product is part of a greater whole. Through this so-called systems thinking Cavex provides complete solutions that enable dental surgeons to significantly increase the degree of service to their patients. For dental use only.

Cavex Instant Stone

A perfect plaster mould in just 10 minutes

Many dental practices do not have a separate room for casting impressions and few will have access to a plaster (vacuum) mixer.

Cavex Instant Stone is a plaster composite that can cast a perfect mould in just 10 minutes for the fabrication of bleaching spoons, splints and mouth protectors. "Treatments" which normally require several visits to the dentist can now be carried out in 1 session. Cavex Instant Stone improves both the productivity of the practice and the service to the patient.





Cavex Holland BV
P.O. Box 852
2003 RW Haarlem
The Netherlands

T +31 23 530 77 00
F +31 23 535 64 82
dental@cavex.nl
www.cavex.nl

- **Tight and smooth**

Cavex Instant Stone is a revolutionary plaster composite that casts perfect moulds in just 10 minutes. Hardened moulds are very strong and feel like plastic. Moulds created with Cavex Instant Stone have a beautifully smooth surface and unprecedented abrasion resistance.

- **Quick and clean**

Thanks to a unique and sophisticated mixing system, not only is Cavex Instant Stone easy and quick to use, a plaster mould can also be created quickly and cleanly.

- **Accurate and efficient**

Cavex Instant Stone's unique formula enables the user to create bubble-free moulds without the use of a vibrating table.

①



Shake the plaster well.

②



Remove the red cap from the small plastic bottle. Push the top of the bottle through the foil.

③



Squeeze the bottle and empty the contents into the tub.

④



Use the red cap to seal the foil on the tub.

⑤



Place thumb on the red cap and shake the tub vigorously for 30 seconds.

⑥



Pour just a small layer of plaster directly from the tub into the impression.

⑦



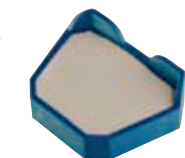
Distribute the plaster evenly over the impression. (Make sure that the plaster fills the entire impression. To promote this, gently tap the impression on the table.)

⑧



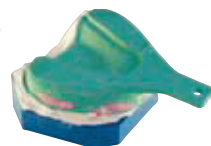
Now fill the entire impression. (also see **TIP**)

⑨



Use the remaining plaster to fill the Base tray.

⑩



Place the impression upside down in the Base tray.

⑪



After 10 minutes the mould has hardened sufficiently and can be removed from the impression.



TIP: You can also choose to just pour out the "denture". Follow steps 1 through 8 and allow the denture to simply harden. Make sure the impression is horizontal in order to create a flat base. Sharp edges can be cut away with a Stanley knife, or smoothed with a micro motor.

For further information, please contact Cavex on +31 23 530 77 00 or visit our website: www.cavex.nl

Assortment:

VT010 4 x 18 (Instant Stone + Activator)