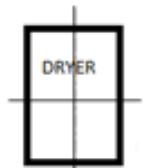


MAXI SHIELD INSTALLATION ADVICE

General

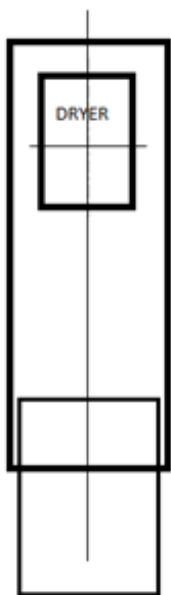
- A) It is important to note that the shield should be mounted to the wall and the hand dryer attached to the shield only as the shield is designed to isolate the dryer from the building fabric.
- B) The stainless steel kick plate allows height adjustment for various hand dryer installations.



Kick Plate

Establish the centre line for the hand dryer and mark this on the wall, carry this line down to the floor or top of skirting as appropriate.

Temporarily place (with double sided tape provided) the stainless steel kick plate on the wall either resting on the floor or top of skirting, align the centre line of the plate with your line on the wall.



Positioning the dryer on the Maxi Shield

Establish the centre of the hand dryer and mark this on the wall, this point will also establish the position of the hand dryer on the shield.

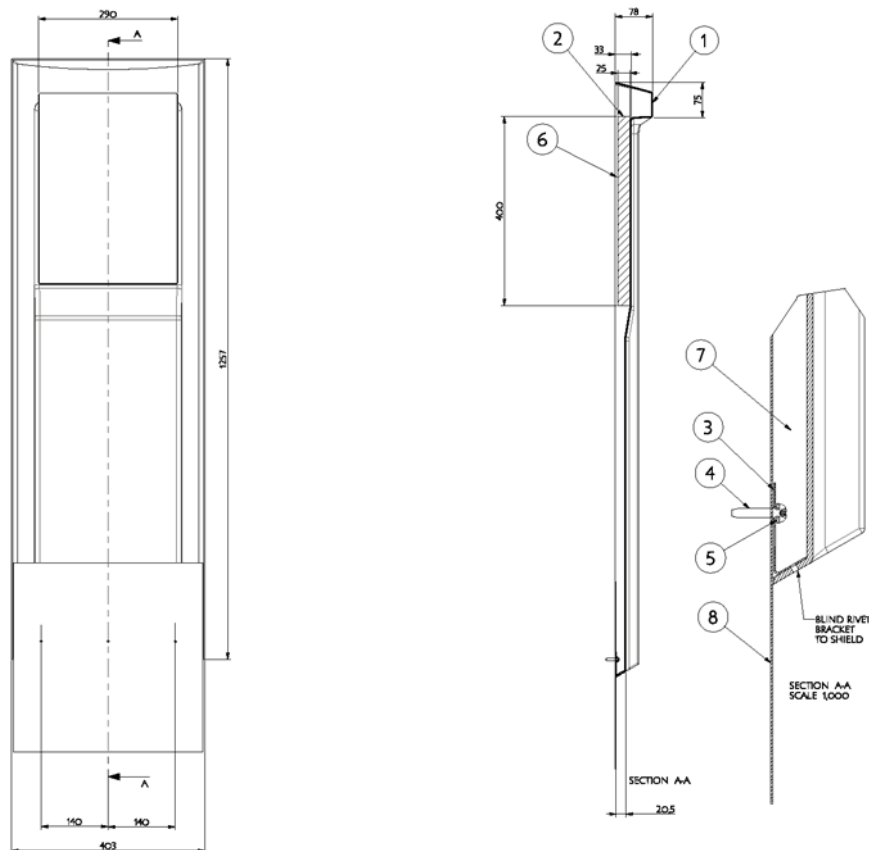
With the shield resting on the floor or bench top, place the hand dryer in the proposed position on the shield and mark the centre of the dryer, also mark the hand dryer mounting holes and the drill the cable entry, at this time

To work out the height of the Maxi Shield

Measure the height from the bottom of the Maxi Shield to the centre mark of the dryer. Now mark that measurement from the centre mark of the dryer on the wall to the kick plate, this will be the height of the Maxi Shield bracket.

Drill the three bottom bracket holes through the stainless kick plate using (template 1), install the three 12G x 25mm screws into these three holes.

Hang the wall shield by the bottom bracket and pull power cable through the cable entry hole, drill through the hand dryer mounting area to fix the shield to the wall in at least two places. (make sure your fixing holes will be behind the dryer)



DETAIL#	DESCRIPTION	MATERIAL/DRAWING NUMBER	# OFF
1	WALL SHIELD	DD806 PMMA CAPPED ABS	1
2	PLY BACKING	STRUCTURAL PLY AS/NZS 2296.400 X 290 X 25 THK.	1
3	BOTTOM BRACKET	DD807 304 SS	1
4	SCREW	NO.12 PAN HEAD WOODSCREW 25 LONG.	3
5	SPACER	HI-Q 03-5N16 NYLON	3
6	SOUND PROOFING	POTTERS SOUND LAG 4506 F/F 4KG NOT SHOWN	A/R
7	SOUND PROOFING	POTTERS SOBERFLEX 20AL/4KG NOT SHOWN	A/R
8	BASE WALL PLATE	DD808 304 SS BRUSHED.	1