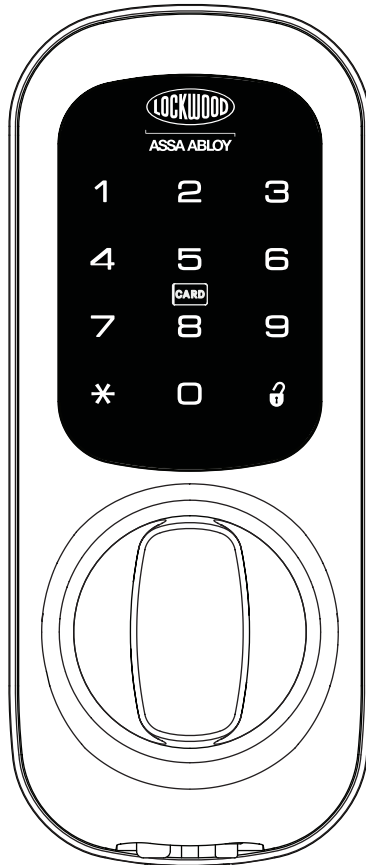




# 001TOUCH™

## USER GUIDE



### 001TOUCH™

## Digital Keypad and Deadlatch



ASSA ABLOY

# Contents

- Introduction \_\_\_\_\_ 2
- Warnings \_\_\_\_\_ 2
- Main Features \_\_\_\_\_ 3
- Quick Guide - Keypad Programming \_\_\_\_\_ 4
- Quick Guide - Keypad Operation \_\_\_\_\_ 5
- Keypad Functions \_\_\_\_\_ 6
- Internal Lock Functions / Battery Replacement \_\_\_\_\_ 6
- Product Definitions \_\_\_\_\_ 7
- EZ Mode Functions \_\_\_\_\_ 8
  - EZ Mode - Keypad Programming \_\_\_\_\_ 9
  - EZ Mode - Keypad Functions \_\_\_\_\_ 10
- Advanced Mode Functions \_\_\_\_\_ 11
  - Advanced Mode - Keypad Programming \_\_\_\_\_ 12
  - Advanced Mode - Keypad Functions \_\_\_\_\_ 13
- Emergency Power Supply \_\_\_\_\_ 14
- Troubleshooting \_\_\_\_\_ 14
- Advance Mode PIN Code Management \_\_\_\_\_ 15
- Guarantee \_\_\_\_\_ 15

## Introduction

The Lockwood 001TOUCH™ combines the trusted 001 Deadlatch lockset with a contemporary electronic aesthetic.

Users benefit from an interactive touchscreen that makes day-to-day access effortless and convenient.

The 001TOUCH™ features the choice of "EZ" or "Advanced" operating modes. Locks are shipped as a default from the factory in "EZ" mode. The desired operating mode should be determined before the completion of lock installation, but can be changed at a later time if required.

The Quick Guide includes most of the functions required for initial setup and use, for further instructions please refer to relevant sections. The Quick Guide is for "EZ" mode only, please refer to the other sections in the instructions for "Advanced" mode.

## Warnings

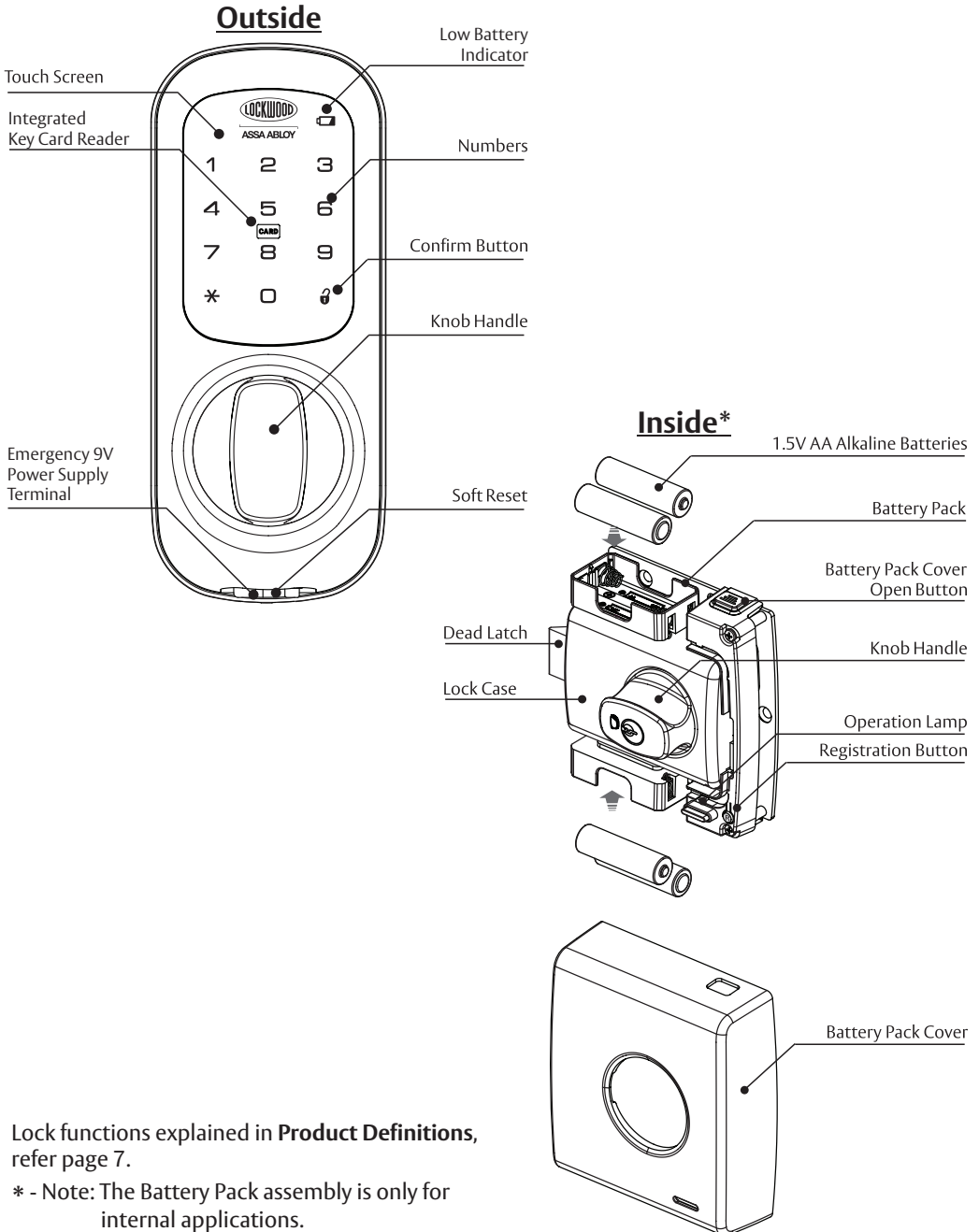
**CAUTION:** Changes or modifications to this unit not expressly approved by the party responsible for compliance could void the user's authority to operate the equipment.

**IMPORTANT:** The accuracy of the door preparation is critical for the proper functioning and security of this cylindrical product. Misalignment can cause premature wear and a lessening of security. The 001TOUCH™ should only be serviced by a qualified technician.

**Finish Care:** This lockset is designed to provide the highest standard of product quality and performance. Care should be taken to insure a long-lasting finish. When cleaning is required use a soft, damp cloth. Using lacquer thinner, caustic soaps, abrasive cleaners or polishes could damage the coating and result in tarnishing.

This lock may not be used on moving doors i.e. Cars, Trains or similar applications. The lock is designed for residential and commercial applications only and door sizes between 32-50mm. We highly recommend that a secondary entrance is required in the unlikely event of total failure. This lock may not be used on fire doors.

# Main Features

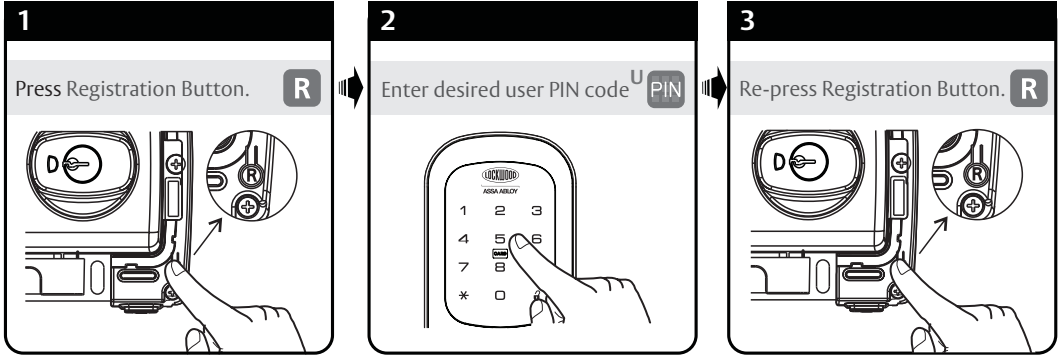


# Quick Guide - Keypad Programming

## 001TOUCH™ Quick Programming Guide

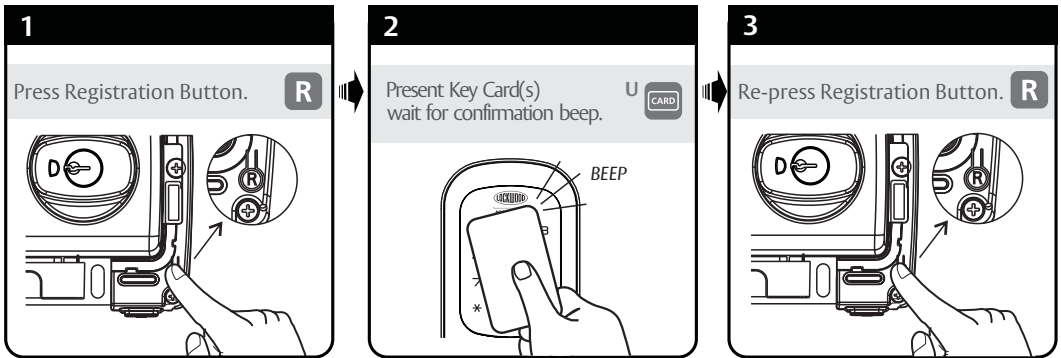
Note: This quick guide is for EZ Mode only, for Advanced Mode please refer to page 11.

### To Program Keypad with User Pin Code



**R** → **U PIN** User Pin Code Registration → **R** Complete

### To Program Keypad with Key Card



**R** → **U CARD** Key Card Registration Repeat if required → **R** Complete

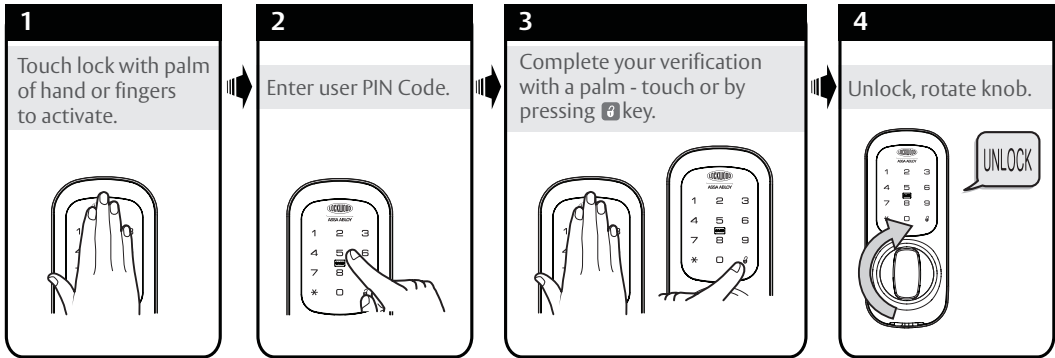
Note: Always ensure you test the User PIN code and Key Card with the door open to ensure the lock code or Key Card is working.

# Quick Guide - Keypad Operation

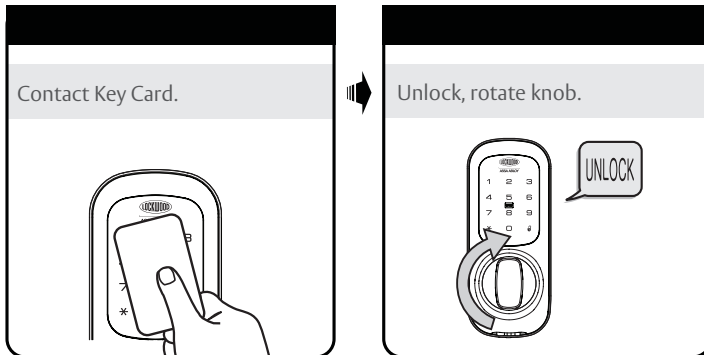
## 001TOUCH™ Quick User Guide

Note: This quick guide is for EZ Mode only, for Advanced Mode please refer to page 11.

### To Open Door with User PIN Code



### To Open Door with Key Card



### Quick Notes

- Programming the card key will not effect the user PIN code.
- Programming the user PIN code will not effect the card key.
- If you want to delete the user PIN code simply program your new user PIN code and the old code will be deleted automatically.
- In order to remove one or more key cards programmed to the lock, simply reprogram all the key card/s present. The key card/s not present during this will no longer be valid.
- You are able to program a visitor code into the lock that may last 3 to 366 hours, please refer to page 10 for more details.
- It is important to note as a backup that you always need to enrol your user PIN code and key card.
- Batteries – Its important to use four quality Alkaline Batteries and all four batteries are replaced at the same time.
- **Cryptic code function** - Prevent others from identifying your pin code during access, the cryptic code function confuses the onlooker but at the same time allows you to still gain entry. You are able to enter any random amounts of digits before you enter your actual code, followed by your real pin code. e.g. if you code is 1234 enter 2345672910171234. You are also able to enter you pin first followed by any random numbers. e.g. 123427364830280

# Keypad Functions

## Smart Pad

### Low Battery Warning



### Wrong Code Entry Limit Warning



# 001 Internal Lock Functions

## Internal Lock Operation

**KEY INSIDE:** Locks or unlocks turn knob by turning key one full turn.

**TURN KNOB:** Retracts latch bolt when unlocked.

**SAFETYRELEASE™ :** Automatically unlocks the internal knob upon entry.

### BOLT HOLD BACK :

To Engage: Rotate turn knob fully clockwise.

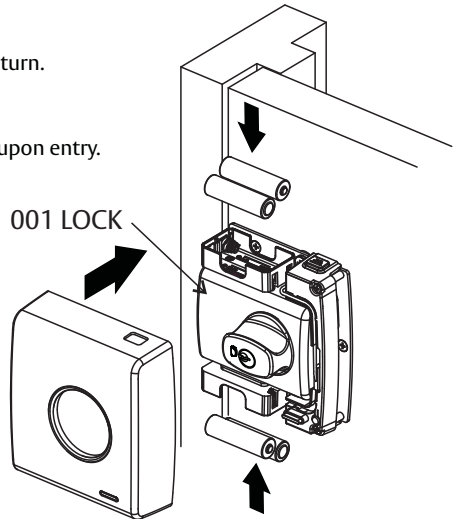
To Release: Rotate turn knob anti-clockwise.

### BOLT HOLD BACK WITH KEY :

Prevents unauthorised "hold back" release.

To Engage: Rotate turn knob fully clockwise and lock in rotated position by turning key in knob one full turn anti-clockwise.

To Release: Unlock turn knob by turning key one full turn clockwise and rotate turn knob anti-clockwise.



## Battery Replacement

To install batteries, first remove Battery Pack Cover by depressing the buttons on the top and bottom of the case, then gently remove cover. Insert 4 good quality alkaline AA batteries into the Battery pack as shown. 2 in the upper battery compartment and two in the lower battery compartment.

Batteries must be new good quality alkaline and not be mixed between new and old.

Caution: Dispose of them responsibly and do not throw batteries in fire.


**EZ Mode:** (Factory default) In this mode you are able to enrol one User PIN code as well as 20 additional key cards. This mode is normally used for a residential homes.

**Advanced Mode:** This mode can be selected at point of installation. **Advanced mode** enables you to have a master code, the master code is able to add 20 different users with a PIN code and 20 Users with a Key Card (40 users in total). Only the master can add or delete users using their PIN. This is normally used to control access or where users may be removed when required.

**User PIN Code:** Is a personalised identification number that consist of 4-12 digits

**Master Code:** Is a personalised identification number that consist of 6 digits and is only required when in advanced mode. The Master code has the ability to add and delete users.

**Key Card:** Is a unique card that can be used like a key. The Key Card can be reused as many times as you want. The Key Card can be used as a backup if you forget your pin code or used instead of your pin. To use the Key Card present it near the centre of the Touch screen for 1-2 seconds, the Key Card does not have to touch the keypad and can be 2cm away from the lock.

**Confirm button:** The  button is used to complete verification after user PIN code is entered.

**Wrong Code/card Entry Limit:** After 5 unsuccessful attempts at entering a valid user PIN code or Valid Key Card the unit will shut down for 3 minutes and not allow operation during this time. The lock will display how many minutes are left in this lock down mode, as per page 6.

**Registration Button:** Located on the battery pack mounting Plate, the Registration button is used for changing the user PIN code or enrolling new Key Cards (Only in EZ mode).

**Low Battery:** When the battery power is low, the low battery icon will appear. Further more the lock will beep 5 times when unlocked. If battery power is completely lost, the emergency power supply can be used.

**Low Battery check:** The battery level can be checked without removing the batteries. With a simple sequence of buttons you can check your battery level (Between 100%-30%). Refer to page 10 For more details.

**Emergency Power Supply:** 9V battery connections are located under the front of the outside escutcheon. In the event that the four AA alkaline batteries are completely discharged, a 9V battery can be used to supply power to the lock. While connecting the 9V battery, the lock can be operated as normal, thus granting access so the four AA alkaline batteries can be replaced.

**Soft reset:** Located in between the Emergency 9V Power socket this small hidden button is used to refresh the internal software, all your settings will remain i.e. user Pin code and Key cards. This can be pushed with a small object i.e. pen. Once pressed you will hear confirmation. This is only ever used in the event your lock malfunctions.

**Passage Mode:** Enabling Passage mode allows continuous entry for non-restricted traffic. Passage mode is enabled or disabled through feature programming. Refer to page 10 For more details.

**Visitor PIN:** The Visitor PIN is a temporary code that expires after a period between 3-336 hours. This is ideal when a plumber or an electrician requires access to your house for a few hours or when your neighbour is looking after your home for up to 2 weeks. All you have to do is program the PIN and the duration . Time may vary up to 10%, refer to page 10 for more details.

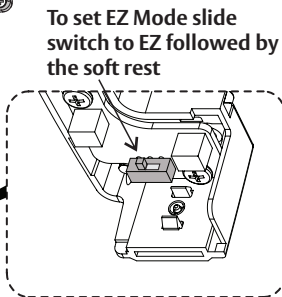
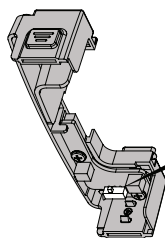
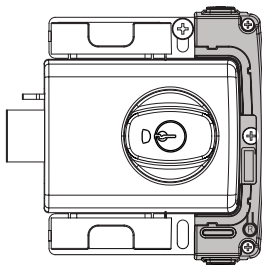
**Volume adjustment:** You have 3 levels of volume adjustment, 1 – Silent 2 – Medium 3 –Loud (3-Factory default)  
**Silent Mode:** Enabling Silent mode shuts off the code confirmation tone playback for use in quiet areas.

**Status LED:** Located on inside escutcheon indicated red when powered up.

# EZ Mode Functions

## Factory Defaults

Settings	Factory Defaults
Default Mode	EZ Mode
User PIN Code	1234567890
Passage	Disable
Visitor Code	Non
Volume	High
Relock time	5 sec. *
Wrong code entry limit	5 times *
Shut down time	180 sec. *



To set EZ Mode slide switch to EZ followed by the soft rest

- EZ mode allows for a single User PIN Code to be assigned.
- Up to 20 Key Cards can be programmed into the 001 Touch in this mode.
- With the use of the User PIN Code a number of basic functions outline on page 10 can be accessed.
- A User PIN Code between 4 to 12 digits can be entered.
- For programming new User PIN Code in EZ mode refer to the next page.
- \* - These values cannot be changed.

# Programming Features

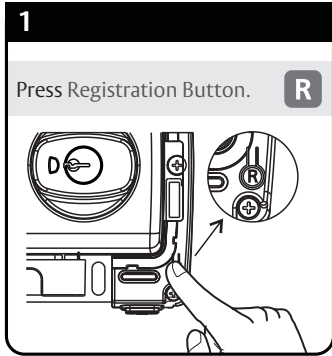
## Menu & Icons

	Touch the screen with palm of hand or fingers to begin and end actions.		Enter User PIN code. Can be 4 to 12 digits in length. Factory default: 1234567890
	Click the indicated number.		Enter Visitor PIN. Can be 4~12 digits in length.
	Press the * key on the touchscreen to enter Menu mode.		Enter user Key Card(s). Up to 20 cards.
	Press the  key on the touchscreen to Enter or Accept entry.		Time setting in Visitor mode. Can be 3~336 Hours.
	Registration User PIN code or Key Cards in EZ Mode		Repeat operation using settings indicated.

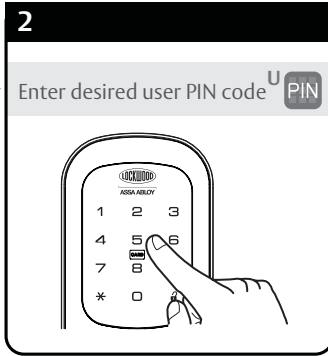


# Keypad Programming - EZ Mode

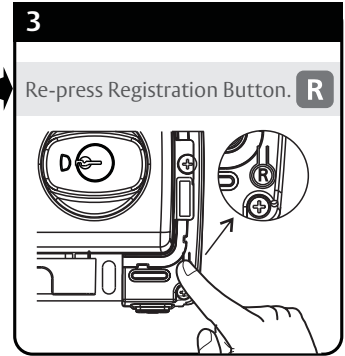
## To Program Keypad with Pin code



After removing the battery cover press the Registration button, you will hear a confirmation tone.



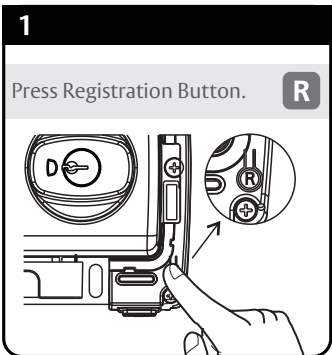
You now have 20 seconds to enter your 4-12 digit user PIN code.



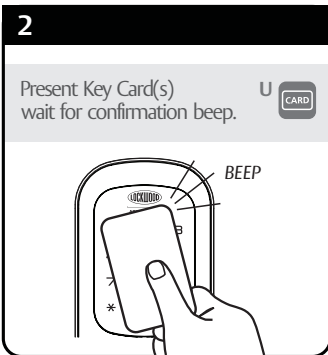
Re-press the Registration button, you will hear another confirmation tone. Now watch the keypad and your code will briefly appear.

R → U PIN User PIN code Registration → R Complete

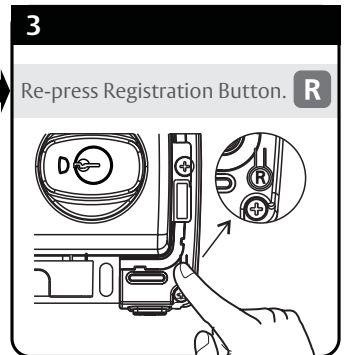
## To Program Keypad with Key Card



After removing the battery cover press the Registration button, you will hear a confirmation tone.



You now have 20 seconds to present card to lock, wait for beep and if you require additional cards repeat.(up to 20 Cards)

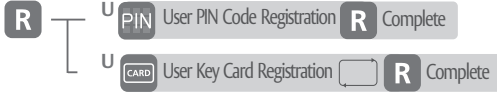


Re-press the Registration button, you will hear another confirmation tone

R → U CARD Key Card Registration → Repeat if required → R Complete

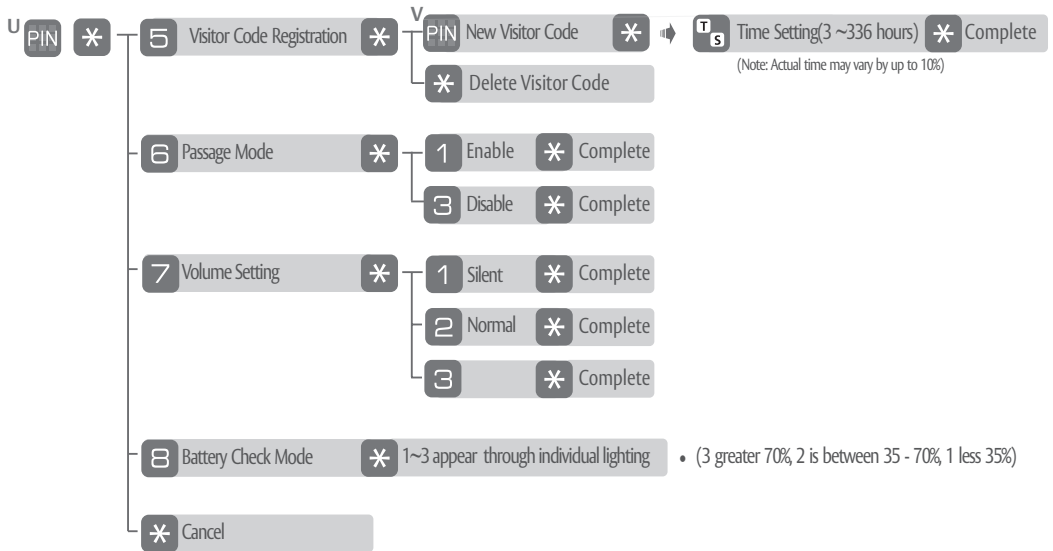
# Keypad Functions - EZ Mode

## User PIN Code / Key Card registration



## User PIN Code / Key Card Function

1. Touch screen with hand or fingers to activate.
2. Enter 4-12 digit User PIN code followed by the \* key.
3. Enter digit (5 → 8) corresponding to the function to be performed followed by the \* key.
4. Now enter desired value/code followed by the \* key
5. Press the \* key to complete the process and conclude the programming session.

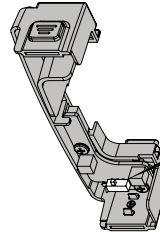
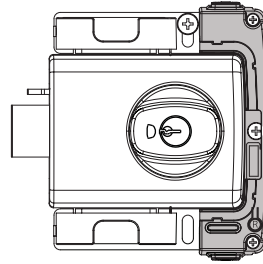


# Advanced Mode Functions

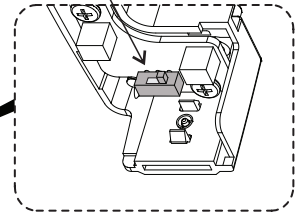
## Factory Defaults

Settings	Factory Defaults
Default Mode	EZ Mode
Master Code	123456
Passage	Disable
Visitor Code	Non
Volume	High
Relock time	5 sec. *
Wrong code entry limit	5 times *
Shut down time	180 sec. *

\* - These values cannot be changed.



To set Advanced Mode slide switch to Advanced followed by the soft reset.



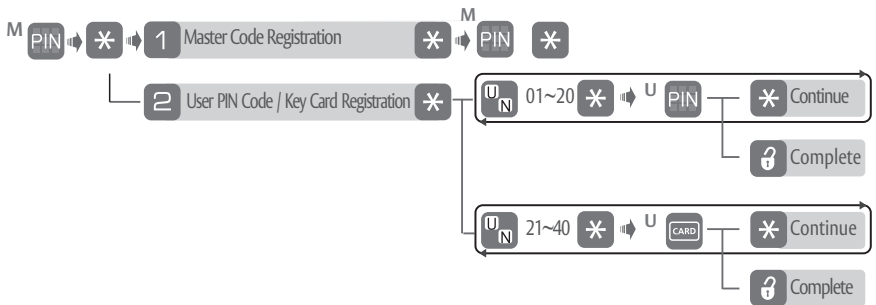
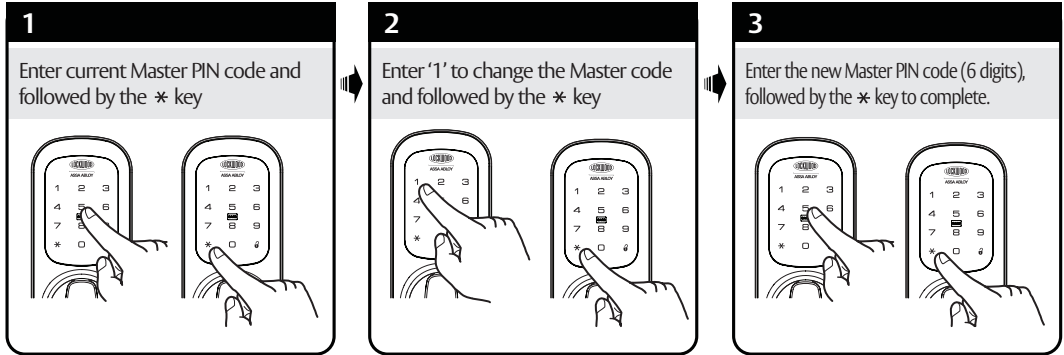
## Programming Features

### Menu & Icons

	Touch the screen with palm of hand or fingers to begin and end actions.	<b>M</b>	Enter Master PIN code (6 digits in length). Factory default: 123456.
	Click the indicated number.	<b>U</b>	Enter User PIN code. Can be 4 to 12 digits in length. Factory default: 1234567890
	Press the * key on the touchscreen to enter Menu mode.	<b>V</b>	Enter Visitor PIN. Can be 4~12 digits in length.
	Press the  key on the touchscreen to Enter or Accept entry.	<b>U</b>	Enter user Key Card(s). Up to 20 cards.
<b>R</b>	Registration User PIN code or Key Cards in EZ Mode	<b>U</b>	User Serial Number (01~20 : User Pin code) (21~40 : User Card)
	Repeat operation using settings indicated.	<b>T</b>	Time setting in Visitor mode. Can be 3~336 Hours.

# Keypad Programming - Advanced Mode

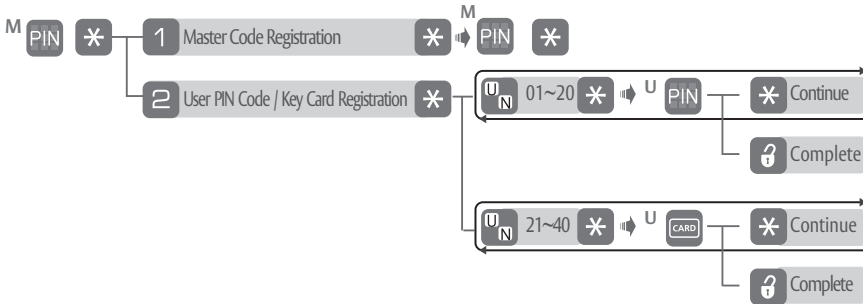
## Register / Change Master Code



- Advanced Mode allows for up to 20 User PIN Codes and 20 Key Cards to be assigned.
- User PIN Codes and Key Cards can only be added or removed once the Master code has been entered.
- With the use of the Master Code a number of advanced functions outline on page 13 can be accessed.
- A 6 digit Master Code can be entered. (Master code and User PIN Code must be different).

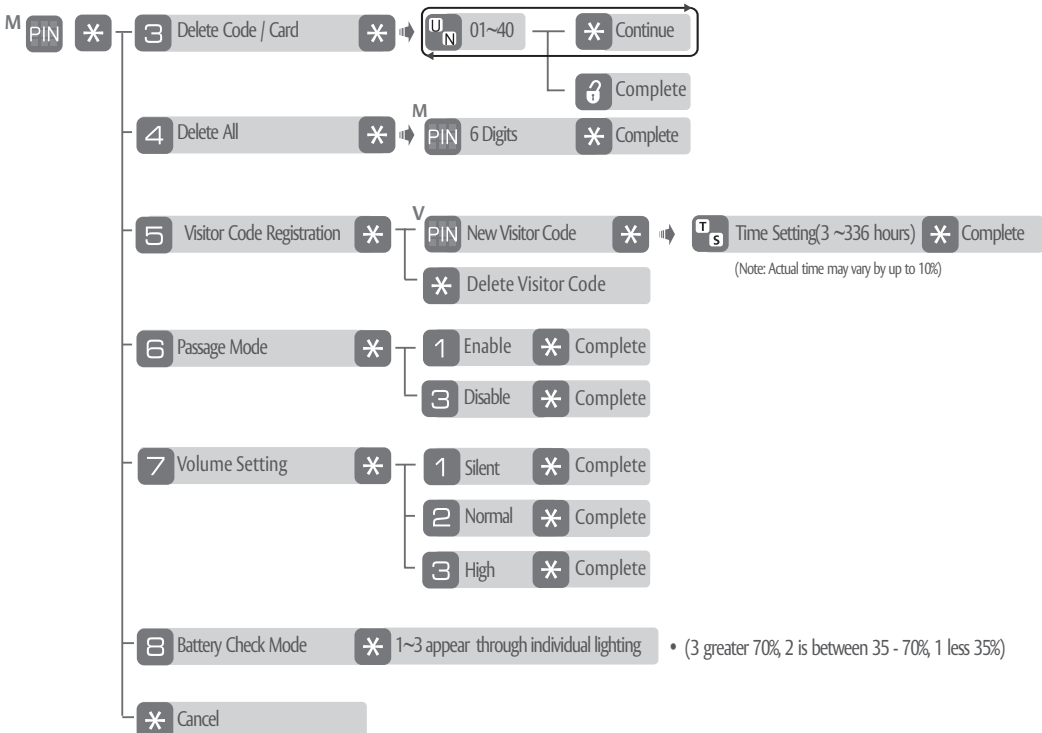
# Keypad Functions - Advanced Mode

## Master and User PIN Code / Key Card registration



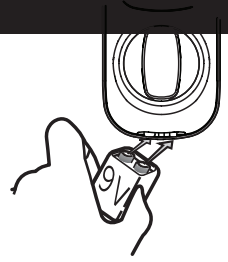
## Master Code / Key Card Function

1. Touch screen with hand or fingers to activate.
2. Enter 6 digit Master code followed by the **\*** key.
3. Enter digit (**3** → **3**) corresponding to the function to be performed followed by the **\*** key.
4. Now enter desired value/code followed by the **\*** key
5. Press the **\*** key to complete the process and conclude the programming session.



# Emergency Power Supply

9V battery connections are located under the front of the outside escutcheon. In the case that the 4 AA alkaline batteries are completely discharged, a 9V battery can be used to supply power to the lock. While connecting the 9V battery, the lock can be operated as normal, thus granting access so the 4 AA alkaline batteries can be replaced. Discharged batteries should be replaced right away.



## Troubleshooting

Symptom	Suggested Action
Lock does not respond – door is open and accessible.	<ul style="list-style-type: none"> <li>The touchscreen will become active when pressed with the palm or fingers in at least 3 areas simultaneously.                             <ul style="list-style-type: none"> <li>- Use a larger area of the palm or fingers and verify contact with at least 3 areas (page 5).</li> </ul> </li> <li>If touchscreen numbers are visible, check to see if they respond when pressed.</li> <li>Check batteries are installed and oriented correctly in the battery case.</li> <li>Check batteries are in good condition (page 10); replace batteries if discharged (page 6).</li> <li>Check to see if touchscreen cable is properly connected and not pinched.</li> <li>Push Soft Reset until confirmation sound is heard.</li> </ul>
Lock does not respond – door is locked and inaccessible.	<ul style="list-style-type: none"> <li>Batteries may be completely discharged.                             <ul style="list-style-type: none"> <li>- Connect a 9-volt battery to the emergency power supply terminal which is located on the outside escutcheon, under the knob. With the 9-volt battery connected, palm the touchscreen, enter user PIN code, and palm touchscreen again (page 5). Replace batteries (page 6).</li> </ul> </li> </ul>
The unit is on for a while, and then shows no reaction. Lights dim.	<ul style="list-style-type: none"> <li>The batteries do not have enough power. Replace the batteries.</li> </ul>
Unit chimes to indicate code acceptance, but the door will not open.	<ul style="list-style-type: none"> <li>Check to see if there is another locking device on the door (i.e. deadbolt).</li> <li>Check the door gaps for any foreign objects between door and frame.</li> </ul>
Unit operates to allow access, but will not automatically re-lock.	<ul style="list-style-type: none"> <li>Check to see if Passage Mode is enabled.                             <ul style="list-style-type: none"> <li>- Disable Passage Mode to lock the door (page 10).</li> </ul> </li> <li>If low battery indicator is lit (page 6), change batteries.</li> </ul>
User PIN codes will not register.	<ul style="list-style-type: none"> <li>User PIN codes must consist of 4 to 12 digits to register.</li> <li>In Advanced mode the same PIN code cannot be used for multiple users.</li> <li>In EZ Mode, User PIN codes must be entered within 20 seconds (while the touchscreen is active) or the process will have to be restarted.</li> <li>In EZ Mode, the user PIN code can only be registered using the Registration Button.</li> <li>The star (*) can not be used as part of the user PIN code.</li> <li>In Advanced mode the Master code must consist of a minimum of 6 digits.</li> <li>Master Code and User PIN Code cannot be the same.</li> </ul>
The unit operates, but it makes no sound.	<ul style="list-style-type: none"> <li>Check to see if Silent Mode is enabled (page 10 &amp; 13).</li> </ul>
The unit shows “Low Battery”	<ul style="list-style-type: none"> <li>This is the indication alerting that it is time to replace the batteries. Replace all four (4) batteries with new AA Alkaline batteries (page 6).</li> <li>Check batteries are installed and oriented correctly in the battery case.</li> <li>Check batteries are in good condition (page 10).</li> </ul>

# Advance Mode PIN Code Management

	User Name	PIN Number
<b>MASTER</b>		
User 1		
User 2		
User 3		
User 4		
User 5		
User 6		
User 7		
User 8		
User 9		
User 10		
User 11		
User 12		
User 13		
User 14		
User 15		
User 16		
User 17		
User 18		
User 19		
User 20		

## Guarantee

ASSA ABLOY Australia Pty Limited ("ASSA ABLOY") warrants its Lockwood products against defects in workmanship and materials, subject to the limitations and exclusions set out in this Warranty. If, within the normal working life of a product, it is found to be defective, and none of the limitations and exclusions set out in this Warranty apply, ASSA ABLOY will supply the same or equivalent product free of charge. This is the only remedy granted by ASSA ABLOY under this Warranty. Limitations: All electrical and electronic components used in ASSA ABLOY's Lockwood range of products (excluding batteries) are guaranteed for a period of 12 months from the date of proof of purchase, unless stated otherwise. Exclusions: This Warranty does not cover: 1. Damage to or malfunction or failure of the Lockwood product caused or contributed to by: (a) improper installation or failure to follow fitting instructions; (b) improper maintenance; (c) fair wear and tear; (d) any modification or repair which has not been authorized by ASSA ABLOY; (e) use of substitute or replacement parts or cylinders other than genuine ASSA ABLOY parts or cylinders; or (f) use of batteries other than those specified by ASSA ABLOY. 2. The cost of: (a) removal and/or replacement of the Lockwood product; (b) freight and/or travelling time; (c) replacement batteries; or (d) any modification or repairs to a Lockwood product, unless authorised by ASSA ABLOY. 3. Damage to or deterioration of the plated finishes Florentine Bronze, Architectural Bronze, Polished Brass, Gold and Satin Brass, which are classified as soft finishes, and are subject to deterioration under some environmental conditions. 4. Damage caused by corrosion when the Lockwood product is used in a corrosive environment. 5. Personal injury, property damage or economic loss, however caused. Symmetry® 5 Year Finish Warranty: ASSA ABLOY Australia Pty Limited will replace five-year branded Symmetry product if within five years from the proven date of purchase it tarnishes, discolours or corrodes when properly installed and subject to no more than fair wear and tear. Symmetry® Everbrass® Warranty: Everbrass product is coated both on the exterior and interior surfaces with a lifetime anti-tarnish finish. ASSA ABLOY Australia Pty Limited will replace Everbrass branded product if it corrodes, tarnishes or discolours when properly installed and subject to no more than fair wear and tear. This Warranty is in addition to and not in substitution for any rights of the purchaser under the Trade Practices Act and state or territory legislation.



ASSA ABLOY

ASSA ABLOY is the global leader in door opening solutions, dedicated to satisfying end-user needs for security, safety and convenience



Lockwood is the leading brand in the Australian locking industry. With an established reputation for high quality products, this iconic brand provides a wide range of locking solutions to residential housing, commercial building and industrial application markets. Lockwood is supported by an extensive distribution and after-sales support network. Their customers include retailers, architects, trade and industrial personnel, locksmiths and security dealers.

**ASSA ABLOY**

ASSA ABLOY is the global leader in door opening solutions, dedicated to satisfying end-user needs for security, safety and convenience.

ASSA ABLOY is represented in all major regions, in both mature and emerging markets, with leading positions in Australia, Europe and North America.

As the world's leading lock group, ASSA ABLOY offers a more complete product range of door opening solutions than any other company on the market.

**1300 LOCK UP (1300 562 587)**  
**lockweb.com.au**

