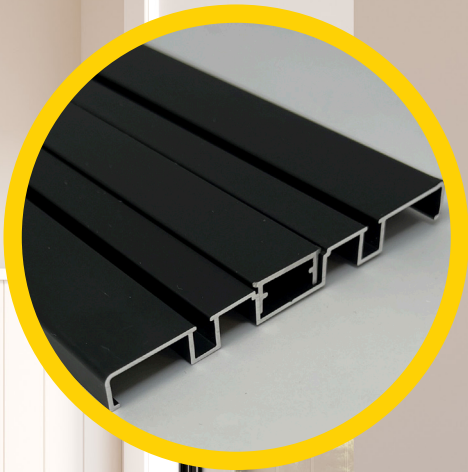


Brio

Wardrobe Roll 50
Wardrobe Roll Trio 50

NEW

Now available in
Black Anodised



Technical specifications

Max door weight: 50kg per panel

Door thickness: 30mm - 40mm

Trim height: Panel height + 37mm

Track colours: White, Clear Anodised, Black Anodised

Features

- Simple, clean look with whisper quiet operation
- Easy fix double or triple track
- Optional soft close accessory
- Superior quality running hardware

Double track

WR50-12/2	Wardrobe Roll 50 kit for 2 panels - 1.2m - up to 1.2m opening
WR50-15/2	Wardrobe Roll 50 kit for 2 panels - 1.5m - up to 1.5m opening
WR50-18/2	Wardrobe Roll 50 kit for 2 panels - 1.8m - up to 1.8m opening
WR50-24/3	Wardrobe Roll 50 kit for 3 panels - 2.4m - up to 2.4m opening
WR50-30/4	Wardrobe Roll 50 kit for 4 panels - 3.0m - up to 3.0m opening
53-50	Wardrobe Roll 50 sill - 5m length
55-50	Wardrobe Roll 50 head - 5m length
56-50	Wardrobe Roll / Trio 50 sill infill - 5m length
Add finish "BA" for black anodised, "CA" for clear anodised, "PWT" for powder coat white	
Add "-TR" for trade packaging	

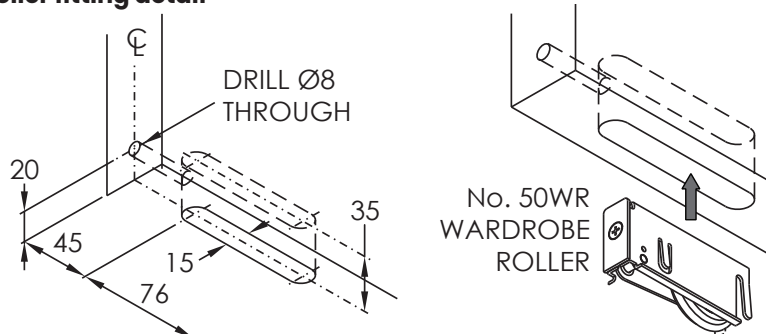
Triple track

WT50-18/3	Wardrobe Roll Trio 50 kit for 3 panels - up to 1.8m opening
WT50-21/3	Wardrobe Roll Trio 50 kit for 3 panels - up to 2.1m opening
WT50-24/3	Wardrobe Roll Trio 50 kit for 3 panels - up to 2.4m opening
WT50-27/3	Wardrobe Roll Trio 50 kit for 3 panels - up to 2.7m opening
WT50-30/3	Wardrobe Roll Trio 50 kit for 3 panels - up to 3.0m opening
57-50	Wardrobe Roll Trio 50 sill - 5m length
58-50	Wardrobe Roll Trio 50 head - 5m length
56-50	Wardrobe Roll 50 / Trio 50 sill infill - 5m length
Add finish "BA" for black anodised, "CA" for clear anodised, "PWT" for powder coat white	

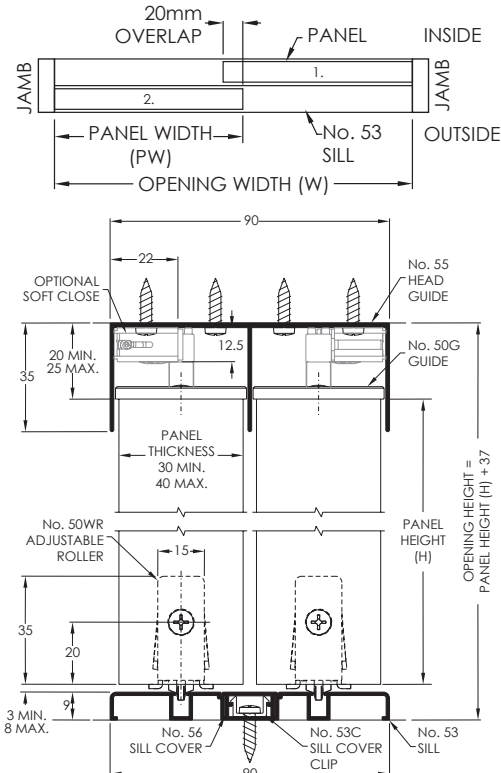
Components and accessories

WR50-1PK	Wardrobe Roll 50 1 Panel fittings
50SCL	Soft close kit for 1 panel in one direction (panel weight: >20kg)

Roller fitting detail



2 Panel configuration



3 Panel configuration

