



TAGF-3/8ASH

10 pieces

Adjustable Screw reed switch

- Flush mount Push Button reed switch
- 3/8" (9.0mm) diameter, 1.2" (30.5mm) depth
- 12" (304.80mm) leads, White colour



10
PIECES

CLOSED LOOP

www.netdigital.com.au

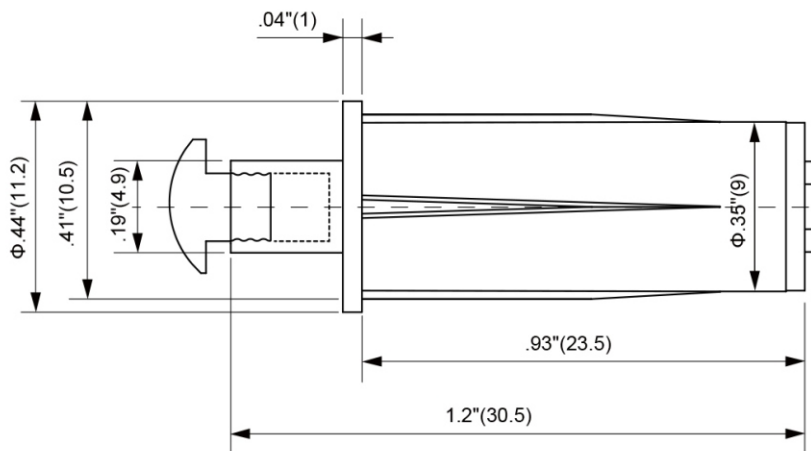


TAGF-3/8ASH

Installation notes

Drill 3/8" hole ON HINGE SIDE of door frame or hinged window to mount switch*. For double hung windows, drill 3/8" hole in top or bottom of window channel to mount switch*. Splice wire leads from switch into alarm circuit.

**Closing door or window compresses adjustable screw into contact shell - closing loop and deactivating alarm. When door or window is opened, the adjustable screw extends from shell - opening loop and activating alarm.*



NOTE: Maximum plunger movement cannot exceed 0.23" (6mm) depth