

## SPECIFICATIONS

## OMGATE DEVICE SPEC

Operating voltage:	5 to 35 V DC or AC 10 to 70 mA
Operating temperature:	-20 to +70 °C
Wireless frequency:	2.4 to 2.48 GHz
Transmission power:	7 dBm
LED Indicators:	Steady blue LED - Indicates power supply is working Blinking red LED - Indicates signal (pulse) was sent to gate LED is off - Indicates unit is off/faulty

## OMGATE APP SPECS

iOS Support:	Compatible with iPhone model 4S and higher, and iOS 7 and up
Android Support:	Compatible with most Android-supported phones from 2013 and later, and with Android 4.4 and higher.

## ORDERING INFO

**OMGATE**

**Presco**

[www.presco.com.au](http://www.presco.com.au)

Copyright ©2015 OmGate. All rights reserved. OmGate logos and product names are registered trademarks of OmGate. No part of this document may be reproduced by any means, nor translated to any electronic medium without the written consent of OmGate. Information contained in this document is believed to be accurate and reliable, however, OmGate assumes no responsibility for its use. Specifications are subject to change without notice.

**NO REMOTE CONTROL.  
NO "PHONING" THE GATE.  
JUST ARRIVE AND ENTER**

# OMGATE

**TRANSFORMING YOUR GATE SYSTEM WITH  
TODAY'S MOST ADVANCED CONTROL AND MANAGEMENT APP**



## SETTING THE STANDARD FOR USER CONVENIENCE

A Bluetooth-powered device, managed by a dedicated mobile app for remote opening of electronic gates.

OmGate detects your phone as you approach sending a pop-up alert to the app and opening the gate.

- Ideal for both residential and commercial gates
- Manage up to 20 different gates from one phone
- Works even when you're on a call or using navigation apps
- Free iOS & Android app that opens all gates with OmGate installed

## EASY INSTALLATION

OmGate system installation is fast, simple and pain-free.

It is compatible with any gate that has an electrical connection and wireless control. For example, garage doors, security gates, barrier gates, and so on.

An authorized technician installs the OmGate device on your gate without any need for complex infrastructure.

All you have to do is download the free mobile app to control the gate!

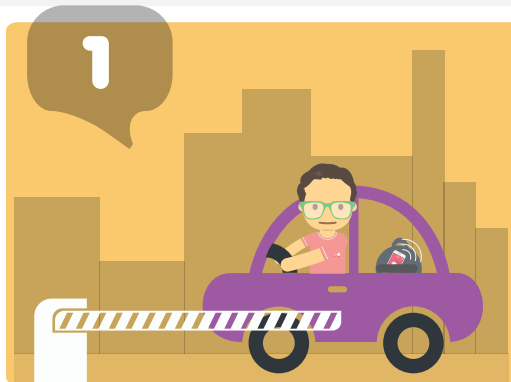
**OMGATE**



## USER AND GATE MANAGEMENT

The app's intuitive interface allows you to define an Admin for each gate who can then easily authorize multiple additional users to open the gate. Users receive invitations via SMS to access the app. When each authorized user approaches the gate an alert will pop up on their smart phone too. A quick tap on the alert will open the gate.

The Admin can also add or remove gates or change any gate name if necessary.



Approaching the gate



The OmGate device installed on the gate recognizes the driver's phone via Bluetooth



The app sends an alert to the phone



Simply tap the alert and the gate opens