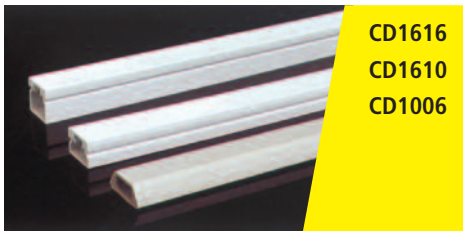
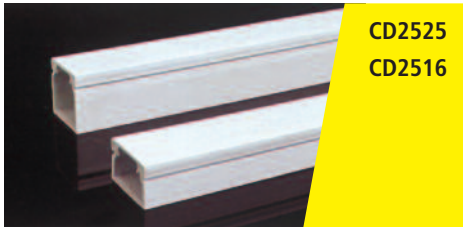


## Mini Trunking - 4m Lengths

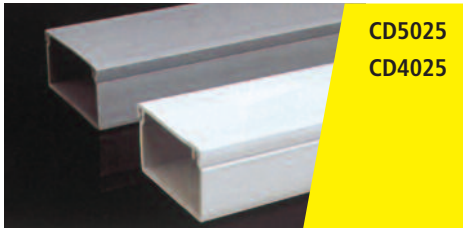
ALL DIMENSIONS ARE GIVEN IN MM - WIDTH BEFORE HEIGHT



CD1616  
CD1610  
CD1006



CD2525  
CD2516



CD5025  
CD4025



CD5025D

Ref No	Size	Colour	Pack
CD1006	10x6mm	WHITE/BROWN	10
CD1610	16x10mm	WHITE/BROWN*	10
CD1616	16x16mm	WHITE/BROWN*	10
CD2516	25x16mm	WHITE/BROWN/BLACK*	10
CD2525	25x25mm	WHITE/BROWN/GREY*	10
CD4016	40x16mm	WHITE ▲	10
CD4025	40x25mm	WHITE/BROWN	10
CD4025D	40x25mm	WHITE DUAL COMPARTMENT	10
CD5025	50x25mm	WHITE/BROWN/GREY ▲	10
CD5025D	50x25mm	WHITE/BROWN/GREY ▲ DUAL COMPARTMENT	6

**Note:** When ordering mini-trunking add colour suffix ie: CD4016 WH  
Colour Suffixes: White=WH, Brown=CB, Grey=GR, Black=BL

\*▲ Please see installation notes page 9.

## Mini Trunking - Accessories

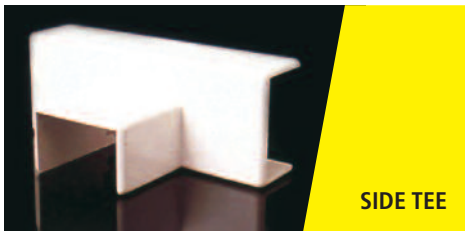


Ref No	Description	Pack
CD1610AF	16x10mm FLAT ANGLE*	10
CD1616AF	16x16mm FLAT ANGLE*	10
CD2516AF	25x16mm FLAT ANGLE*	10
CD2525AF	25x25mm FLAT ANGLE*	10
CD5025AF	50x25mm FLAT ANGLE▲	1
CD1610AI	16x10mm INTERNAL ANGLE*	10
CD1616AI	16x16mm INTERNAL ANGLE*	10
CD2516AI	25x16mm INTERNAL ANGLE*	10
CD2525AI	25x25mm INTERNAL ANGLE*	10
CD5025AI	50x25mm INTERNAL ANGLE▲	1
CD1610AE	16x10mm EXTERNAL ANGLE*	10
CD1616AE	16x16mm EXTERNAL ANGLE*	10
CD2516AE	25x16mm EXTERNAL ANGLE*	10
CD2525AE	25x25mm EXTERNAL ANGLE*	10
CD5025AE	50x25mm EXTERNAL ANGLE▲	1
CD1610TF	16x10mm FLAT TEE*	10
CD1616TF	16x16mm FLAT TEE*	10
CD2516TF	25x16mm FLAT TEE*	10
CD2525TF	25x25mm FLAT TEE*	10
CD5025TF	50x25mm FLAT TEE▲	1
CD1610EC	16x10mm END CAP*	10
CD1616EC	16x16mm END CAP*	10
CD2516EC	25x16mm END CAP*	10
CD2525EC	25x25mm END CAP*	10
CD5025EC	50x25mm END CAP	1
CD1610C	16x10mm COUPLING*	10
CD1616C	16x16mm COUPLING*	10
CD2516C	25x16mm COUPLING*	10

\* ▲ Please see installation notes page 9.

\* MINI TRUCKING FITTINGS AVAILABLE IN WHITE ONLY

## Mini Trunking - Accessories



Ref No	Description	Pack
CD2516ST	25x16mm SIDE TEE	10



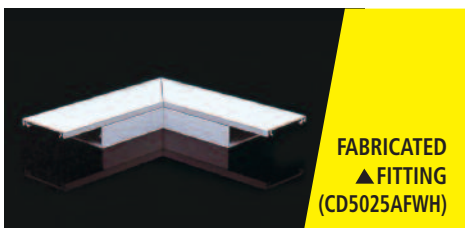
CD2516LHI	25x16mm L HAND INTERSECTION	10
CD2516RHI	25x16mm R HAND INTERSECTION	10

## Mounting Block



Ref No	Description	Pack
AUSIBOX	20mm DEEP MOUNTING BLOCK ENTRIES IN 8 DIFFERENT POSITIONS EACH TO ACCEPT EITHER CD1610, CD1616 OR CD2516	10

**Note:** When ordering mini-trunking add colour suffix ie: CD4016 WH  
Colour Suffixes: White=WH, Brown=CB, Grey=GR



### Installation

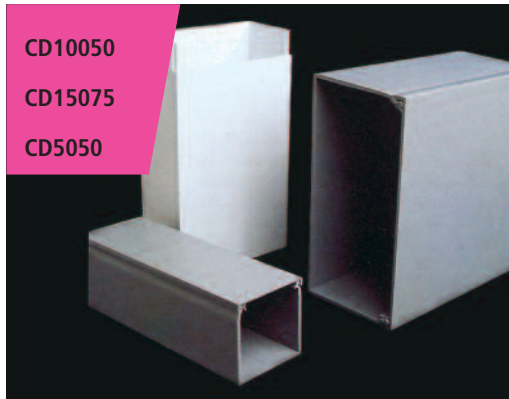
\*These trunking accessories are moulded, therefore accurate mitreing and jointing is not necessary. All couplings, angles and T-pieces snap into position and the adjacent ends of trunking need only be rough cut. Cut the lid of the trunking 10mm shorter than the base for the accessory to snap into position. Trunking should be secured to the wall at greater than 150mm from an accessory to allow for minor discrepancies in the wall surface.

▲ These trunking accessories are fabricated, therefore follow these procedures.

1. Fix base of trunking and base of accessories to wall. (allow slotted mounting holes for thermal expansion).
2. Cut lid of trunking shorter than base by the same amount as the overlap of lid on the accessory. If more than one trunking length is to be fitted between accessories, cut only final lid to allow overlap of the base joint for added strength. Ensure that all cut ends are square and neat and a sufficient gap is allowed between lids for thermal expansion.

## Maxi Trunking - 4m Lengths

ALL DIMENSIONS ARE GIVEN IN MM - WIDTH BEFORE HEIGHT



CD10050

CD15075

CD5050

Ref No	Size	Colour	Pack
CD5050	50x50mm	WHITE/BROWN/GREY ▲	8
CD7525	75x25mm	WHITE ▲	8
CD7550	75x50mm	WHITE/GREY ▲	6
CD7575	75x75mm	WHITE/GREY ▲	6
CD10050	100x50mm	WHITE/GREY ▲	6
CD100100	100x100mm	WHITE/GREY ▲	4
CD15075	150x75mm	WHITE/GREY ▲	2

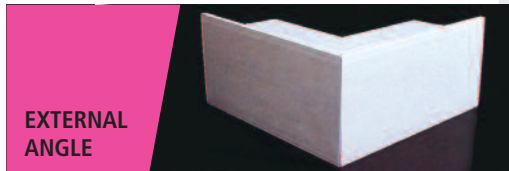
## Maxi Trunking - Accessories



FLAT  
ANGLE



INTERNAL  
ANGLE



EXTERNAL  
ANGLE



FLAT TEE



END PIECE

Ref No	Description	Pack
CD50DIV	DIVIDER TO FIT CD7550 - 2m	1
CD5050AF	50x50mm FLAT ANGLE ▲	1
CD7550AF	75x50mm FLAT ANGLE ▲	1
CD7575AF	75x75mm FLAT ANGLE ▲	1
CD10050AF	100x50mm FLAT ANGLE ▲	1
CD100100AF	100x100mm FLAT ANGLE ▲	1
CD5050AI	50x50mm INTERNAL ANGLE ▲	1
CD7550AI	75x50mm INTERNAL ANGLE ▲	1
CD7575AI	75x75mm INTERNAL ANGLE ▲	1
CD10050AI	100x50mm INTERNAL ANGLE ▲	1
CD100100AI	100x100mm INTERNAL ANGLE ▲	1
CD5050AE	50x50mm EXTERNAL ANGLE ▲	1
CD7550AE	75x50mm EXTERNAL ANGLE ▲	1
CD7575AE	75x75mm EXTERNAL ANGLE ▲	1
CD10050AE	100x50mm EXTERNAL ANGLE ▲	1
CD100100AE	100x100mm EXTERNAL ANGLE ▲	1
CD5050TF	50x50mm FLAT TEE ▲	1
CD7550TF	75x50mm FLAT TEE ▲	1
CD7575TF	75x75mm FLAT TEE ▲	1
CD10050TF	100x50mm FLAT TEE ▲	1
CD100100TF	100x100mm FLAT TEE ▲	1
CD5050EP	50x50mm END PIECE ▲	1
CD7550EP	75x50mm END PIECE ▲	1
CD7575EC	75x75mm END CAP*	1
CD10050EC	100x50mm END CAP*	1
CD100100EC	100x100mm END CAP*	1
CD15075EC	150x75mm END CAP*	1

**Note:** When ordering maxi-trunking add colour suffix ie: CD100100GR  
Colour Suffixes: White=WH, Brown=CB, Grey=GR

\* ▲ Please see installation notes page 12.