

## Australian Flush Plates

P4600WHI, P4601WHI, P4602WHI,  
P4603WHI, P4604WHI, P4605WHI,  
P4606WHI



### FEATURES

Our premium Australian flush plates to accept our premium Voice-Grade, Cat-5E or Cat-6 IDC jacks.

Also compatible with other standard Australian mechanisms and jacks including F-connectors etc.

The 2-piece design has a separate back plate and cover, allowing cover to be removed for painting etc.

Fits standard Australian electrical switch plate installation hardware and screw centres, making it perfect for easy flush installation on gyprock or fibro cavity walls.

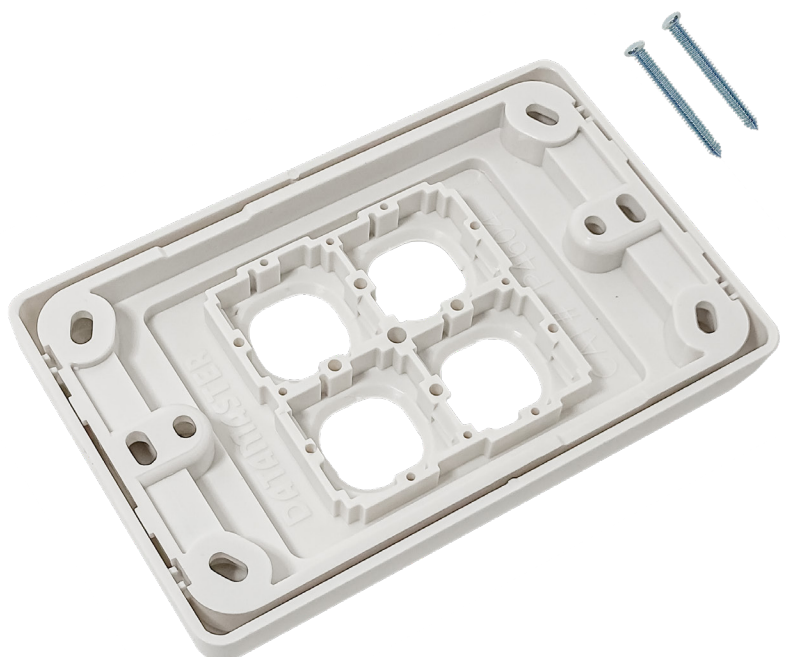
Supplied unloaded without jacks, packed in individual Datamaster® zip-top bags inside carton of 10.

Standard colour is white, other colours available on request subject to minimum order quantity.

Dimensions 116(W) x 75(H) x 13(D)mm.

### TECHNICAL SPECIFICATIONS

CATEGORY	VALUE
Plate Thickness	12.9mm
Mounting Centre	84mm
Plate Size	73.6mm (W) x 117mm (H)
Colours	White
Orientation	Available in vertical and horizontal
Compliance	AS/NZ 3133



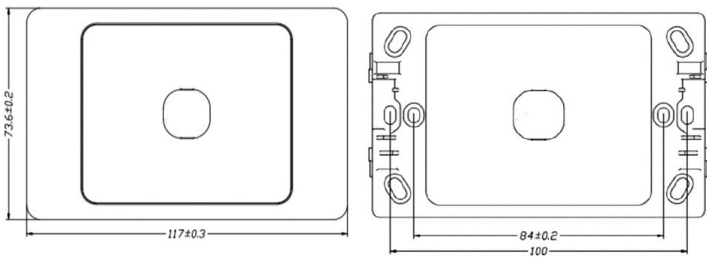
# DATAMASTER

## Australian Flush Plates

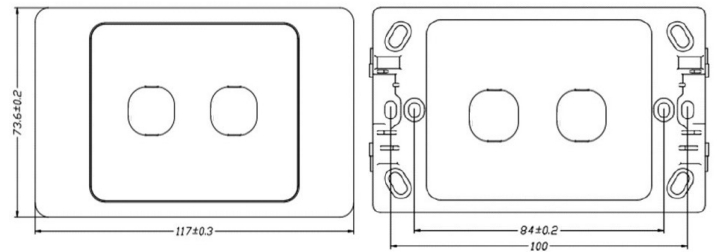
P4600WHI, P4601WHI, P4602WHI,  
P4603WHI, P4604WHI, P4605WHI,  
P4606WHI



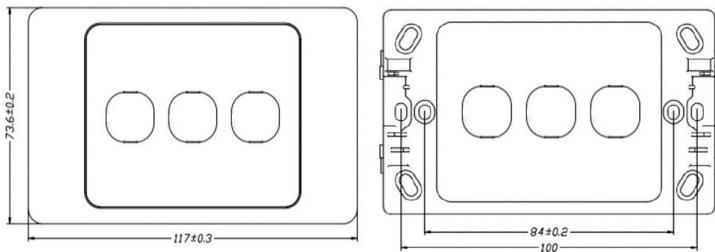
**P4601WHI**



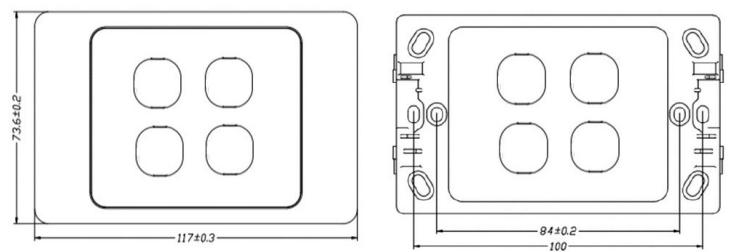
**P4602WHI**



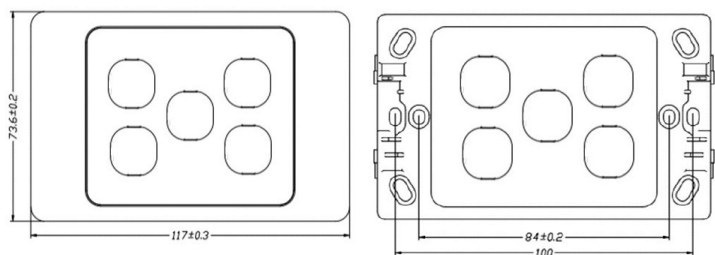
**P4603WHI**



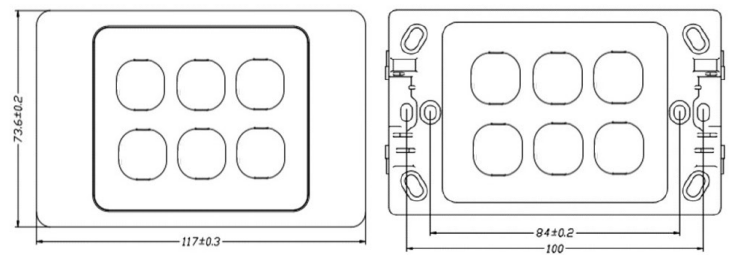
**P4604WHI**



**P4605WHI**



**P4606WHI**



# DATAMASTER

## Australian Flush Plates

P4600WHI, P4601WHI, P4602WHI,  
P4603WHI, P4604WHI, P4605WHI,  
P4606WHI

### AVAILABLE MODELS

