

KONEC SMART SWITCH K118 FLOATING BUTTON

USER MANUAL

For all Konec Smart Switch
K118 Floating Button Series [With Neutral]

CONTENTS

1. Notice	
Disclaimers.....	01
Important Safety Instructions.....	01
2. Product Overview	
Product Description.....	02
Features.....	02
Certification.....	02
Awards.....	02
Product Models.....	03
Product Variations.....	03
Exploded View.....	04
Product Dimensions.....	04
Specifications.....	05
3. Set Up	
What's Included.....	06
Wiring Diagram.....	06
Installation.....	09
4. Configuration Guide	
Download the App.....	10
Add product to Arks.....	10
Device Control Page.....	12
Remove from Arks.....	25
5. Scene	26
6. Indicator Light Status	31
7. Contact Us	32

1. NOTICE

DISCLAIMERS

- This User Manual is designed to help you get the most out of your Konec Smart Switch K118 Floating Button. Please read it carefully before use. For your safety and the best experience, we recommend that installation and maintenance be carried out by a qualified professional.
- The information provided in this manual is for general guidance and reference purposes only. Konec Solutions Pty Ltd makes no representations or warranties, express or implied, regarding the completeness, accuracy, or suitability of the content. Product specifications, features, and visuals are subject to change without notice.
- This product must be installed, repaired, and maintained in accordance with AS/NZS 3000 and applicable local laws. Improper installation, use, or unauthorised modification may void the warranty and pose safety risks.
- To the extent permitted by law, Konec Solutions disclaims any liability for direct, indirect, incidental, or consequential damages arising from the use of this manual or the product itself.
- This disclaimer does not affect your rights under the Australian Consumer Law or the New Zealand Consumer Guarantees Act 1993.
- All content in this document—including text, images, and graphics—is the property of Konec Solutions. No part may be reproduced, translated, or modified without prior written permission.
- For the latest version of this manual, please visit www.konechome.com.au.

IMPORTANT SAFETY INSTRUCTIONS

To ensure a safe and compliant installation, please follow these precautions:

- This product is designed for professional installation.
- Disconnect power before starting installation or maintenance.
- Installation must comply with AS/NZS 3000 and all relevant local electrical and building regulations.
- Do not exceed the product's rated electrical capacity.
- Avoid using power tools unless explicitly specified.
- Do not install in areas exposed to water or high humidity unless rated for such conditions.
- Use appropriate personal protective equipment (e.g., gloves, safety glasses).

For product usage and maintenance safety, please refer to the User Manual.

2. PRODUCT OVERVIEW

PRODUCT DESCRIPTION

The Konec Smart Switch K118 Floating Button connects to the network in your home through the Zigbee gateway.

It allows you to turn on/off lights through buttons, the app and control panel, as well as voice control on Amazon Alexa, Google Home and Siri Shortcuts. You can also customise multiple scene linkages with other Konec smart devices.



FEATURES



UP TO 4 GANG

The switch has a range of 1 - 4 gangs, all switches can be used as a smart scene button with or without load.



APP CONTROL

The on/off status of the switch can be controlled remotely through the app.



SCENE CONTROL

Control multiple smart devices to your desired settings with a single tap.



SCHEDULE

Set scheduled/countdown timers to turn on/off at specified time.



STATUS INDICATION

Built-in LED lights that discreetly indicate the on/off status.



OTA UPDATE

Receive the latest firmware notifications and update using the app.

CERTIFICATION



This product is RCM certified, ensuring compliance with Australian safety and regulatory standards.

AWARDS



Good Design Awards 2024 - Product Hardware and Building Category.

NDIS STANDARDS COMPLIANT

This product's design is based on the NDIS Specialist Disability Accommodation Design Standard.

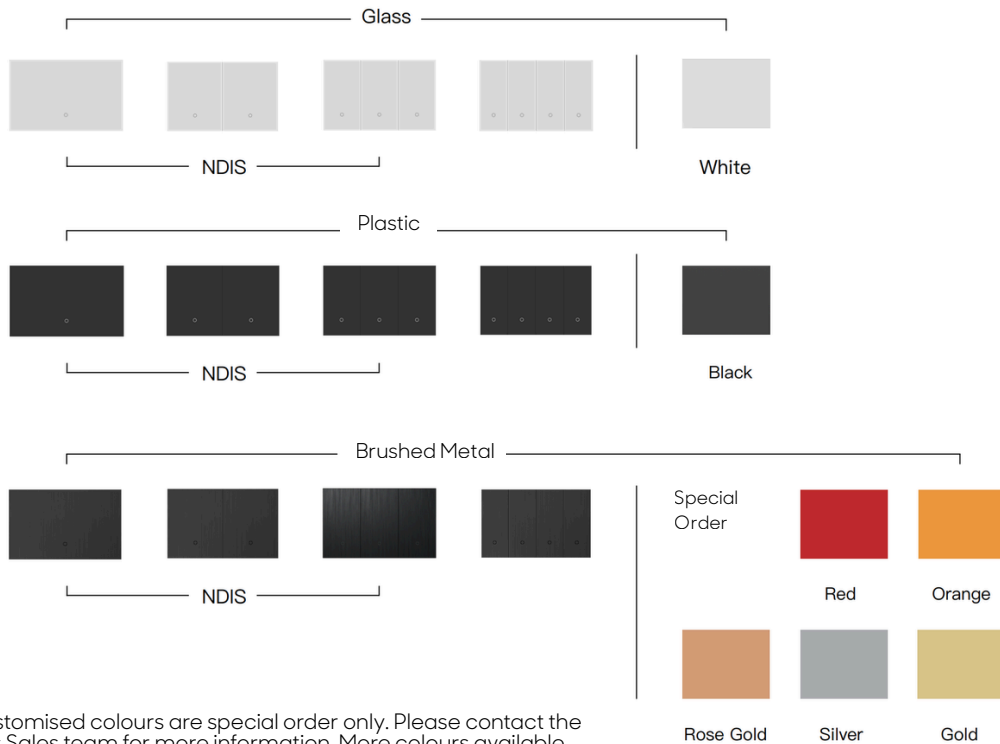
*This is applicable for 1, 2, and 3 gang variations.

2. PRODUCT OVERVIEW

PRODUCT MODELS

	1 Gang	2 Gang	3 Gang	4 Gang
Plastic Black	KGD-K118-1G-PC-BL-Z SKU: KSS00309	KGD-K118-2G-PC-BL-Z SKU: KSS00318	KGD-K118-3G-PC-BL-Z SKU: KSS00327	KGD-K118-4G-PC-BL-Z SKU: KSS00336
Glass White	KGD-K118-1G-GLA-WH-Z SKU: KSS00301	KGD-K118-2G-GLA-WH-Z SKU: KSS00310	KGD-K118-3G-GLA-WH-Z SKU: KSS00319	KGD-K118-4G-GLA-WH-Z SKU: KSS00328
Glass Black	KGD-K118-1G-GLA-BL-Z SKU: KSS00343	KGD-K118-2G-GLA-BL-Z SKU: KSS00344	KGD-K118-3G-GLA-BL-Z SKU: KSS00345	KGD-K118-4G-GLA-BL-Z SKU: KSS00346
Brushed Metal (Various Colours)	KGD-K118-1G-ALU-BL-Z SKU: KSS00306	KGD-K118-2G-ALU-BL-Z SKU: KSS00315	KGD-K118-3G-ALU-BL-Z SKU: KSS00324	KGD-K118-4G-ALU-BL-Z SKU: KSS00333
	KGD-K118-1G-ALU-GO-Z SKU: KSS00303	KGD-K118-2G-ALU-GO-Z SKU: KSS00312	KGD-K118-3G-ALU-GO-Z SKU: KSS00321	KGD-K118-4G-ALU-GO-Z SKU: KSS00330
	KGD-K118-1G-ALU-RE-Z SKU: KSS00302	KGD-K118-2G-ALU-RE-Z SKU: KSS00311	KGD-K118-3G-ALU-RE-Z SKU: KSS00320	KGD-K118-4G-ALU-RE-Z SKU: KSS00329
	KGD-K118-1G-ALU-SW-Z SKU: KSS00304	KGD-K118-2G-ALU-SW-Z SKU: KSS00313	KGD-K118-3G-ALU-SW-Z SKU: KSS00322	KGD-K118-4G-ALU-SW-Z SKU: KSS00331
	KGD-K118-1G-ALU-DG-Z SKU: KSS00305	KGD-K118-2G-ALU-DG-Z SKU: KSS00314	KGD-K118-3G-ALU-DG-Z SKU: KSS00323	KGD-K118-4G-ALU-DG-Z SKU: KSS00332
	KGD-K118-1G-ALU-OR-Z SKU: KSS00307	KGD-K118-2G-ALU-OR-Z SKU: KSS00316	KGD-K118-3G-ALU-OR-Z SKU: KSS00325	KGD-K118-4G-ALU-OR-Z SKU: KSS00334
	KGD-K118-1G-ALU-RG-Z SKU: KSS00308	KGD-K118-2G-ALU-RG-Z SKU: KSS00317	KGD-K118-3G-ALU-RG-Z SKU: KSS00326	KGD-K118-4G-ALU-RG-Z SKU: KSS00335

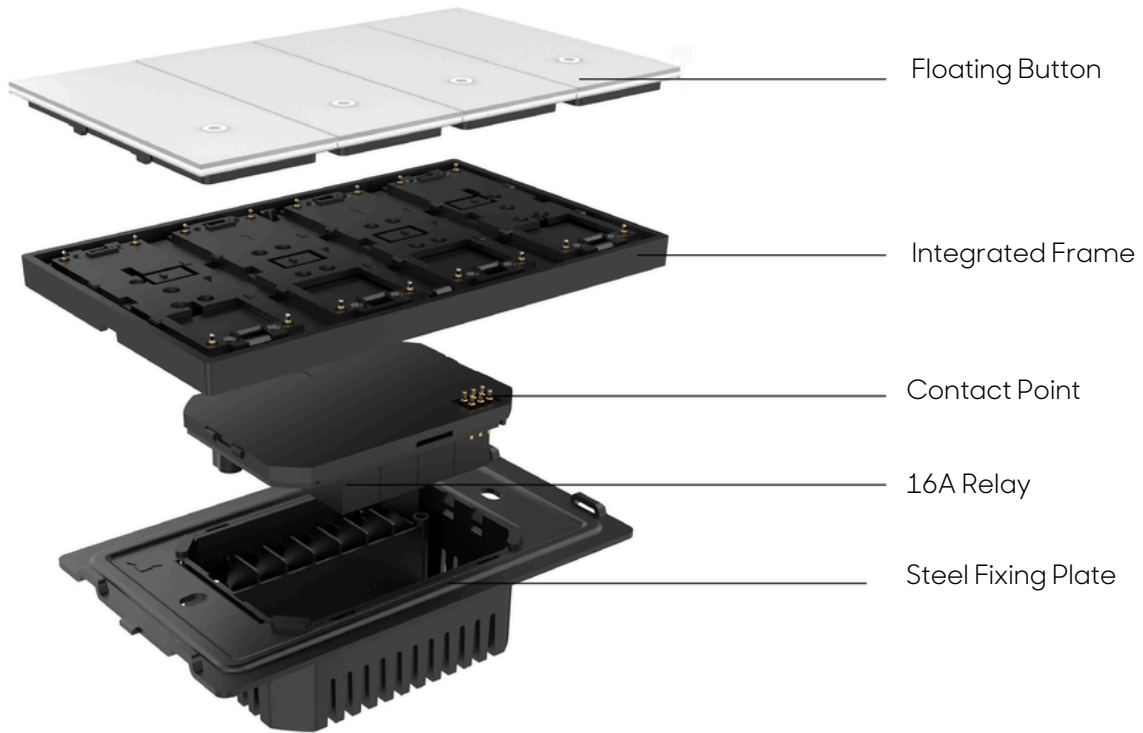
PRODUCT VARIATIONS



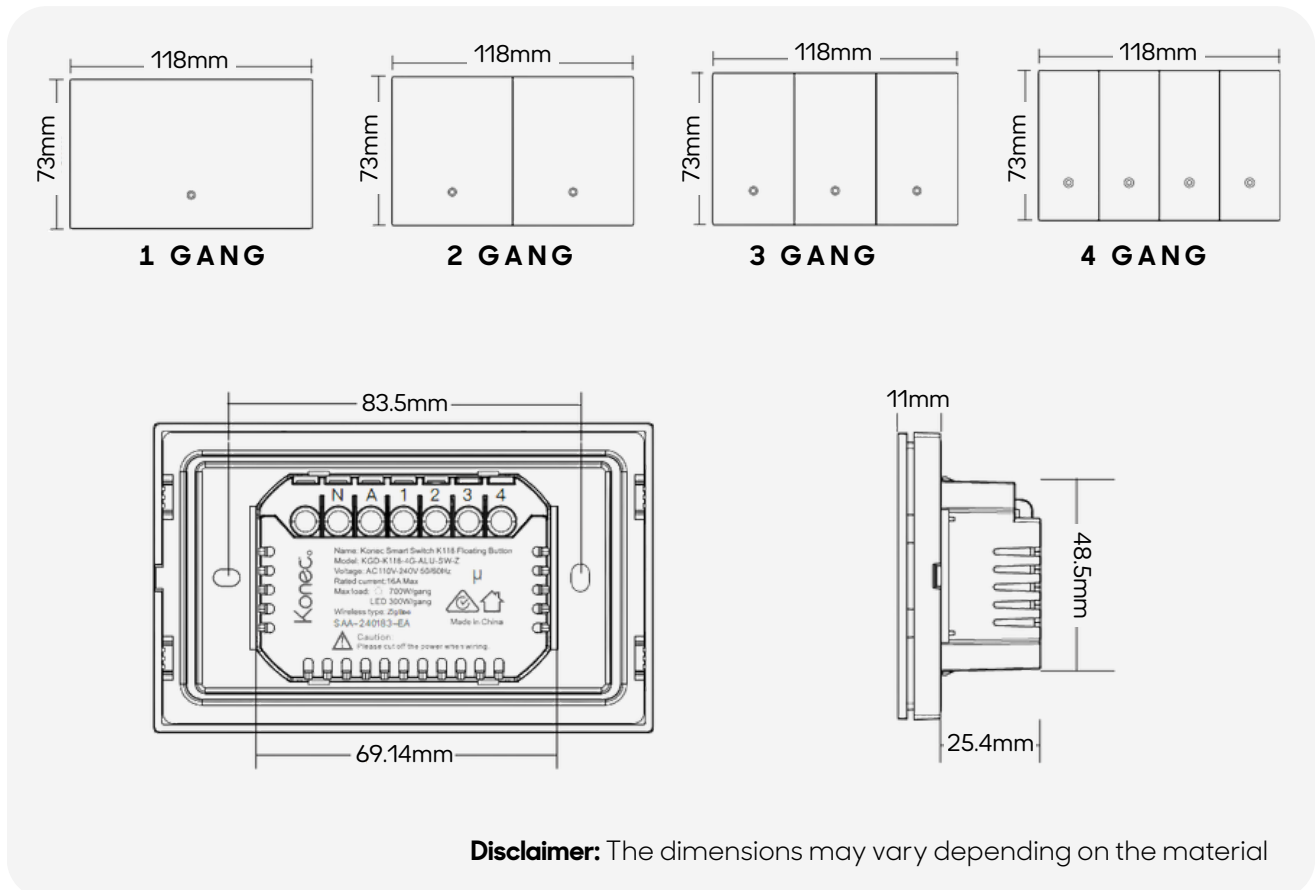
Please note: Customised colours are special order only. Please contact the Konec Solutions Sales team for more information. More colours available.

2. PRODUCT OVERVIEW

EXPLODED VIEW

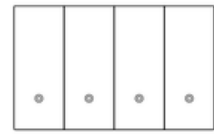
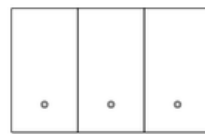
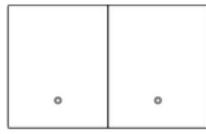


PRODUCT DIMENSIONS



2. PRODUCT OVERVIEW

SPECIFICATIONS



Name	Parameter
Input Voltage	AC110V - 240V, 50/60Hz
Rated Current	Max. 16A
Max. Load /per Gang	INC 700W LED 300W
Connection Type	Zigbee
Operating Frequency	2.400 ~ 2.483GHz
Standby Consumption	≤ 0.5W
Transmit Power	Max. 20dBm
Wiring Type	Active & Neutral
Dimensions	118 x 73 x 36.4mm
Operating Environment	-10°C ~ 55°C, ≤ 80% RH (Non-Condensing)
Storage Environment	-10°C ~ 55°C, ≤ 80% RH (Non-Condensing)
Indicator Light	Blue LED

3. SETUP

WHAT'S INCLUDED

SMART SWITCH * 1



Note: This image is for reference. Colour and finish will vary based on what was ordered.

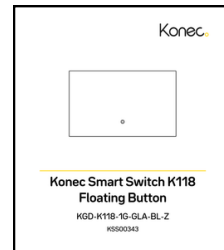
SCREWS * 2



PAINTING PROTECTION COVER * 1



IN-BOX USER MANUAL * 1



WIRING DIAGRAM



Note: Before installing, ensure the wiring, cut-out & clearance is meeting the requirements.

Active Wire & Neutral Wire Required

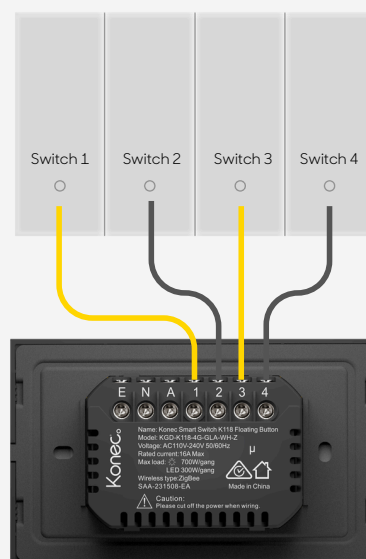


Active Wire



Neutral Wire

Wiring Alignment for Gangs



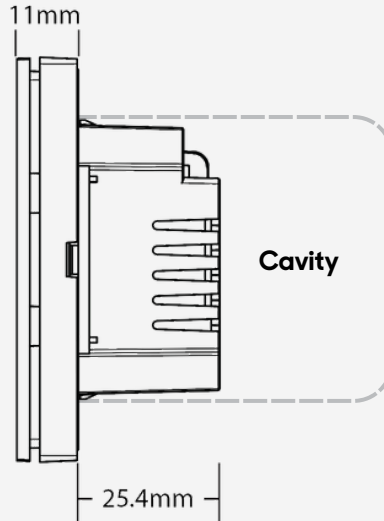
CAUTION: PLEASE CUT OFF THE POWER WHEN WIRING.

3. SETUP

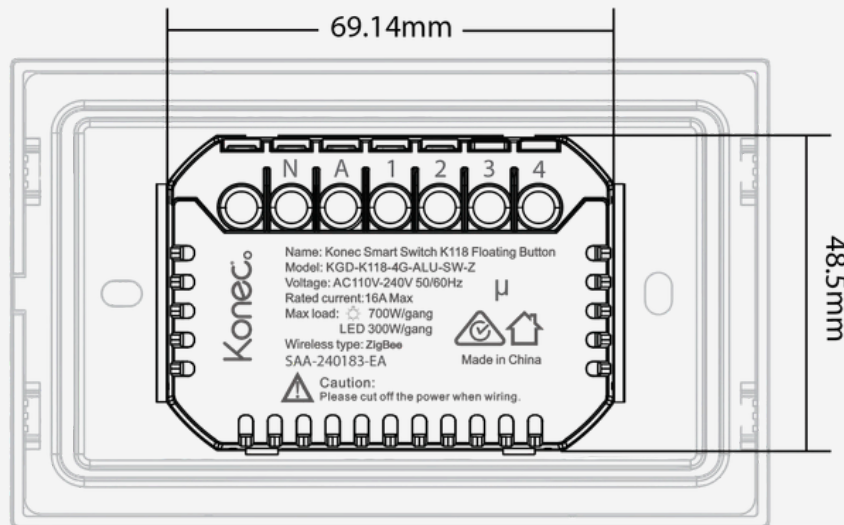


Household and indoor uses only, installed by a qualified professional.

Cut-out Requirements



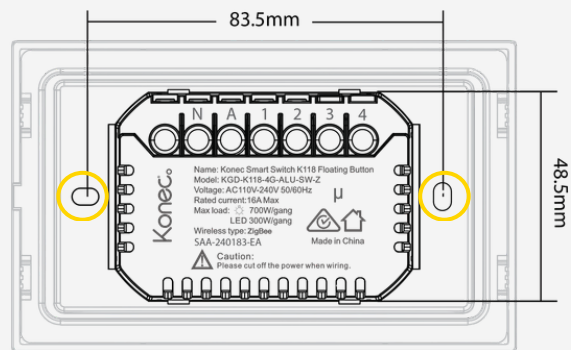
Ensure the cavity space is sufficient to fit all of the wires.



Special Circumstances

Disclaimer: The cut out dimensions and requirements may vary for surfaces such as **marble or tile**. Cut out spacing may need to include spacing for the screw holes.

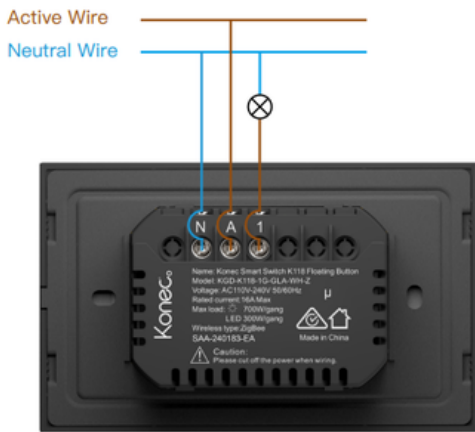
Include the screw holes for the cut out spacing.



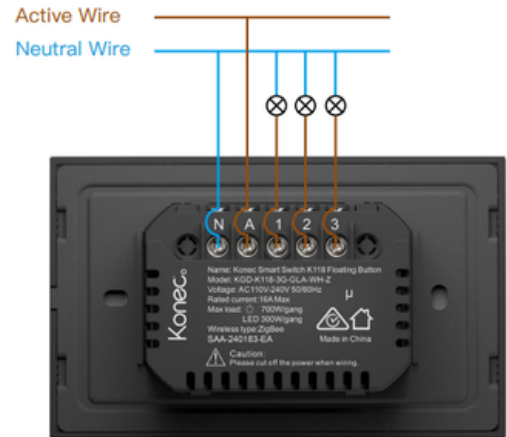
3. SET UP

⚠ CAUTION: PLEASE CUT OFF THE POWER WHEN WIRING.

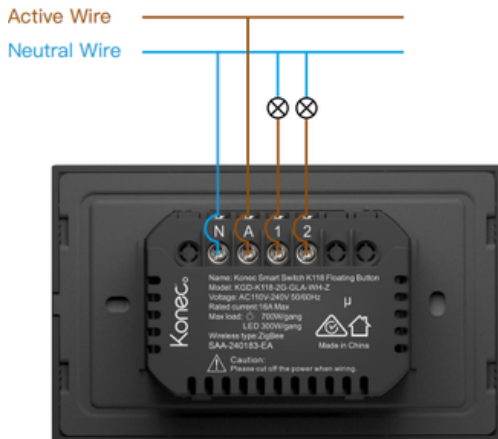
1 GANG WIRING



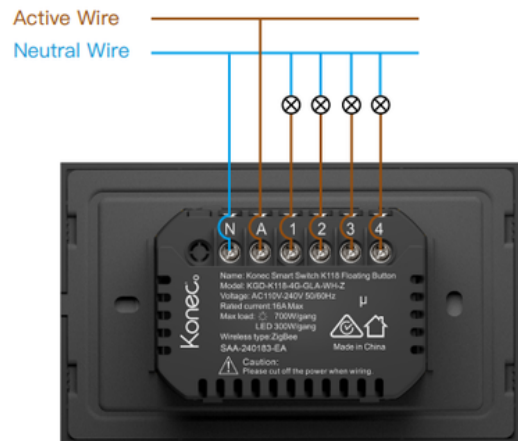
3 GANG WIRING



2 GANG WIRING



4 GANG WIRING



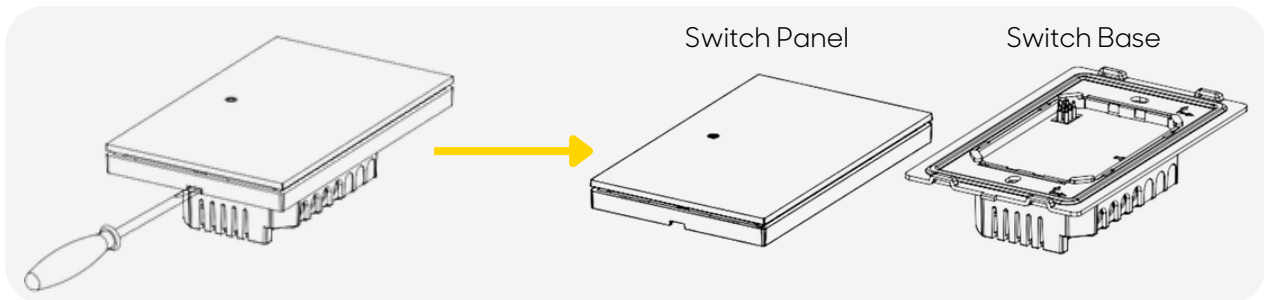
3. SET UP

INSTALLATION



**DO NOT USE POWER DRILLING TOOLS.
THIS CAN BEND AND DAMAGE THE DEVICE.**

1. If the cover plate and back plate are connected, use a screw driver to separate the panel and the base.



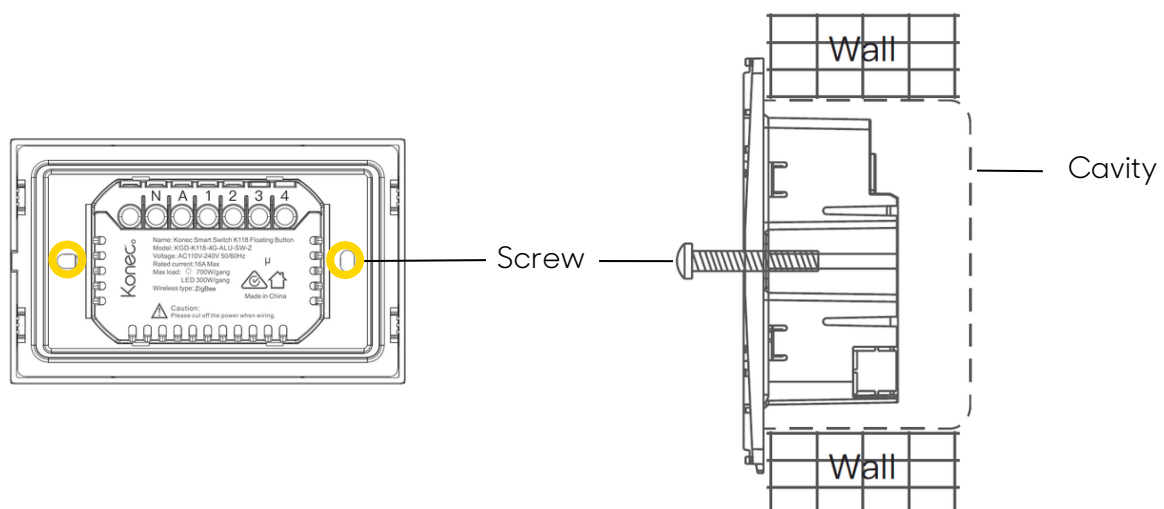
2. Insert the switch base into the wall cavity, ensure that it fits securely with enough space in the cavity to fit the wires.

3. Prepare and connect the Wiring (Refer to the Wiring Diagram pg.8).

- 3.1 **Active Wire** connects to "**A**" terminal.
- 3.2 **Neutral Wire** connects to "**N**" terminal.
- 3.3 **Load Wire** connects to "**1, 2, 3, 4**" terminal (depending on the gang).

4. Fix the switch panel onto the wall.

- 4.1 Move excess wiring into cavity space.
- 4.2 Screw the switch plate onto the wall.
- 4.3 Snap the switch panel onto the mounting panel.



Disclaimer: This installation method may differ for surfaces like marble and tile.

4. CONFIGURATION



Disclaimer: All images and text provided below are intended for reference purposes only. Please note that this content is subject to updates, and both the text and images may change over time.

4.1 DOWNLOAD THE APP



IOS

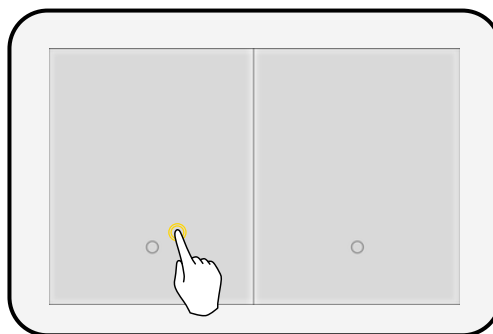


Android

Scan the QR Code to download Arks by Konec Solutions App.

4.2 ADD PRODUCT TO ARKS

- 1 After powering on, press and hold any switch button for 10 seconds. The indicator light will blink, indicating that the device has entered pairing mode.



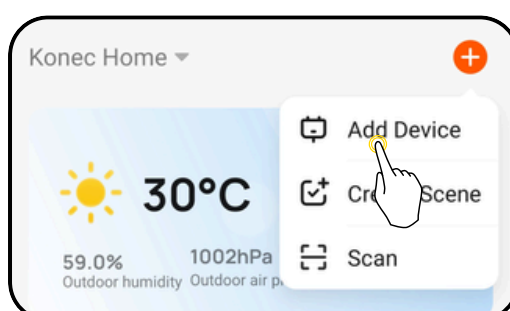
- 2 On the app, tap on the home list and select the home you wish to pair with the switch.

✦ If you want to add it in a new home, please reference to the "Konec Arks APP User Guide" to create a new home.



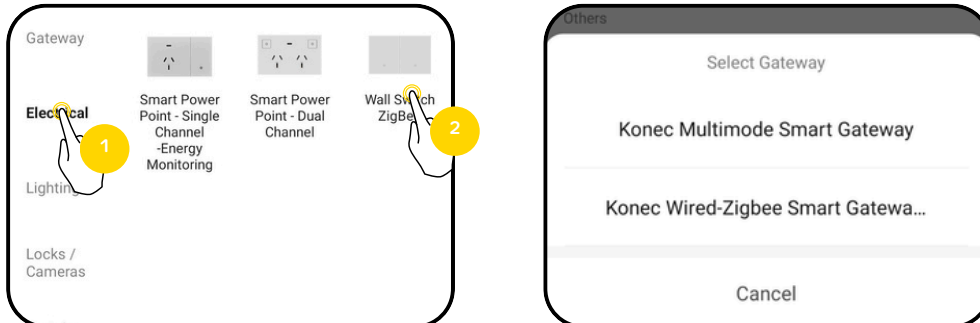
✦ Ensure that a gateway is installed properly and added to the Arks App.
Please refer to the User Manual for the corresponding gateway installation and pairing.

- 3 Tap on the "+" icon and then tap **[Add Device]**.

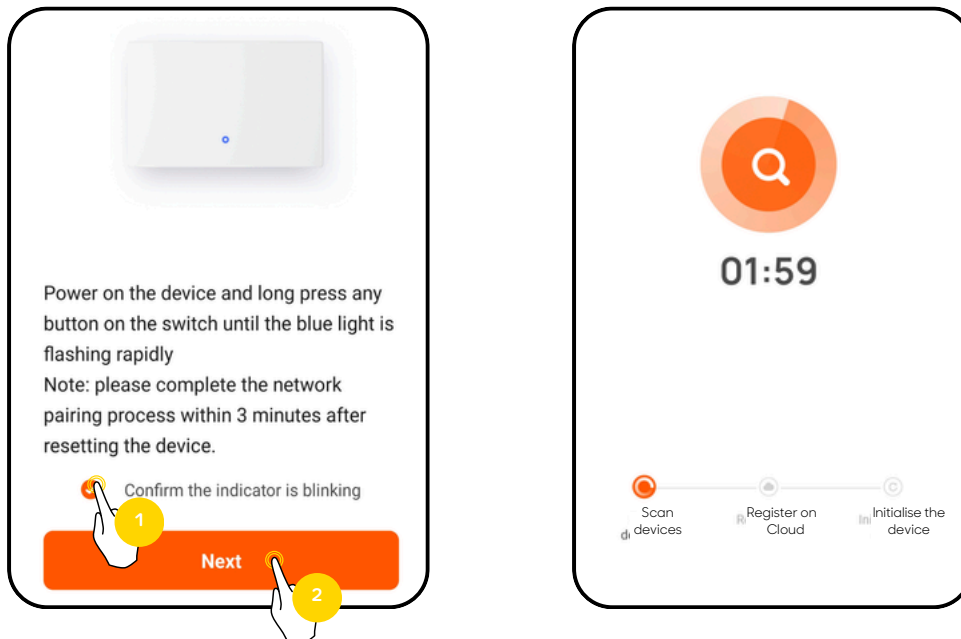


4. CONFIGURATION

- 4 Tap on [**Electrical**], and then tap [**Wall Switch Zigbee**]. Choose the gateway you wish to pair with the device.



- 5 Tap the reset status confirmation and tap [**Next**]. The app will scan for the device.



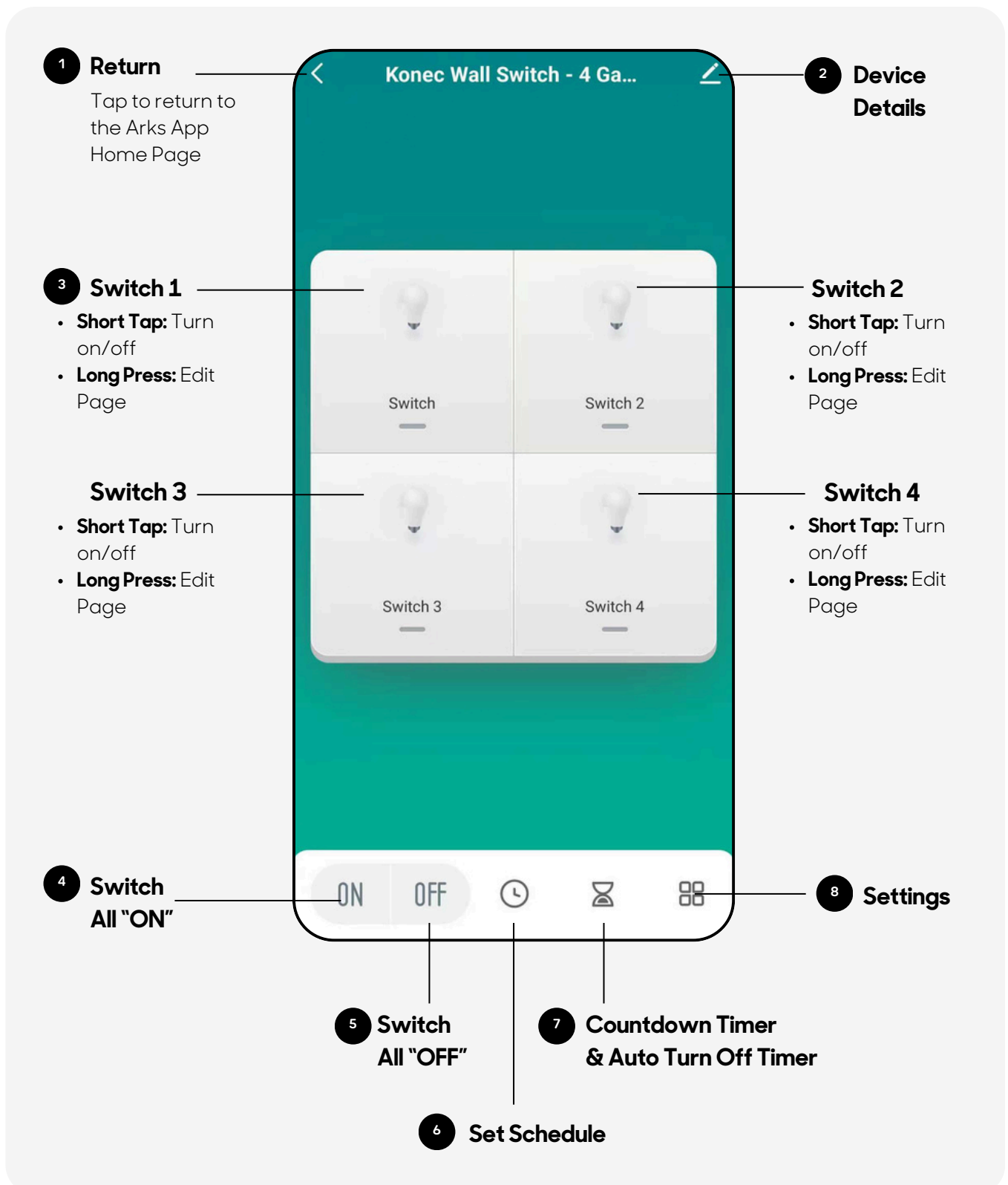
- 6 Device will be automatically detected and appear once the Pairing Operation is successful. Tap [**Done**] to complete. The switch should appear on the Dashboard.



4. CONFIGURATION

4.3 DEVICE CONTROL PAGE

Directly access and control the settings and functionalities of the Konec Smart Switch K118 Floating Button. Special features include adjusting settings, viewing status, or performing setup configurations.



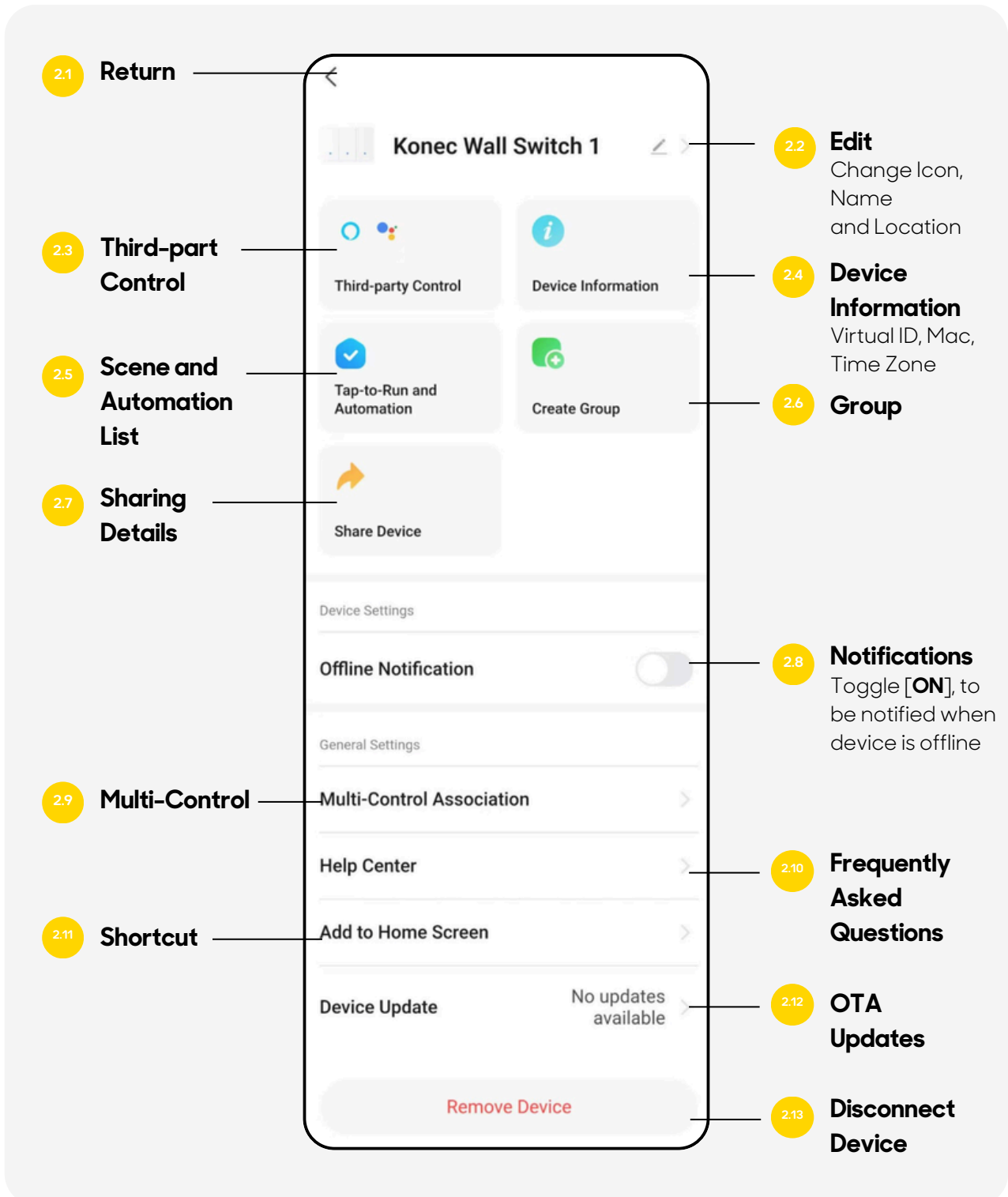
4. CONFIGURATION

1 RETURN

Tap the Return icon “<” to go back to the Home Screen.

2 DEVICE DETAILS

Access the Device information and other information.



4. CONFIGURATION

2.1

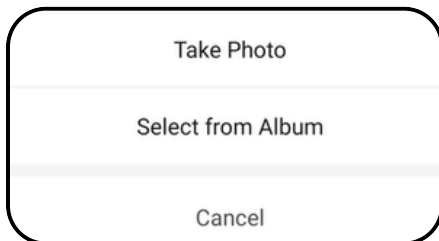
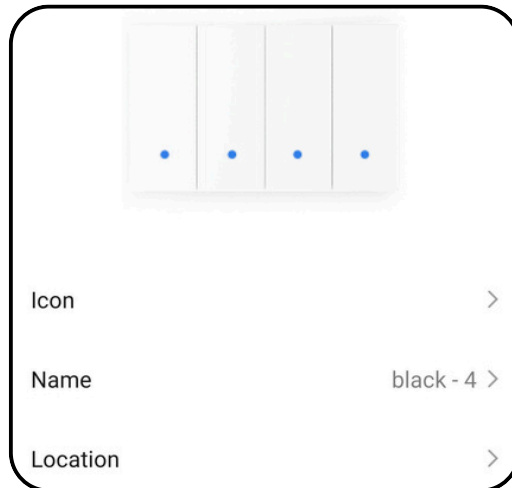
Return

Tap the Return icon “ < ” to go back to the Device Interface.

2.2

Edit

Tap the Signature icon “ ✎ ” to change Icon, Name and Location of the device.



Icon

Update display icon with an icon from a photo or your phone.



Name

Change the display name.



Location

Select where the device is located.

2.3

Third-part Control

Third-party device control connection.

2.4

Device Information

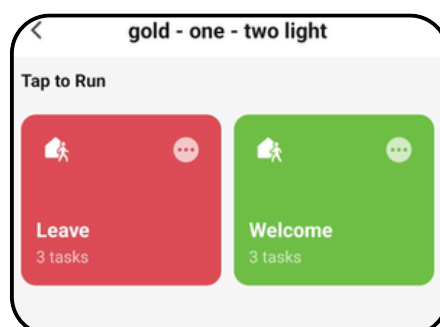
Obtain the information about Virtual ID, Mac, and Time Zone.

2.5

Scene and Automation List

View the list of Scenes and Automations that this device is included in.

You can tap [**Tap-to-Run and Automation**] to view the list of Scenes and Automation.



4. CONFIGURATION

2.6

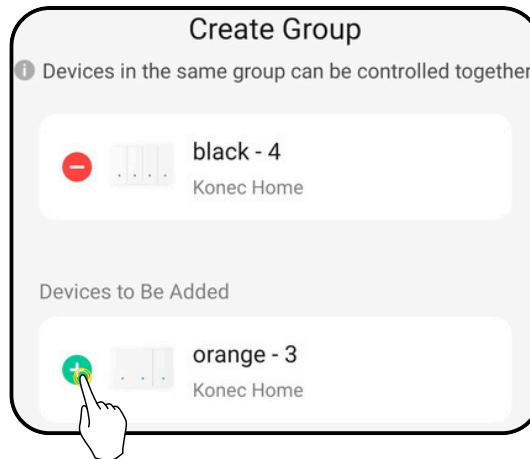
Group

Create a group where you can control the selected devices together.



Note: Both devices must be paired under the same gateway to allow Group feature.

1. Tap [**Create Group**].
2. Under "**Devices to be Added**", tap on the "+" of the device you will to group.
3. Tap [**Save**].



2.7

Sharing Details

Details on how to share this device's access and control with other users.



Note: Sharing methods that solely share one device in your smart home is not supported. You would need to **Add a Member** to your Smart home to access the device.

Sharing Method Not Supported

Currently, you cannot use the specified method to share Bluetooth mesh devices, Zigbee devices, infrared devices, Bluetooth Beacon devices, and certain Bluetooth LE devices with other users.

Recommended Sharing Method

If the recipient is a home member or a reliable user, tap Me > Home Management > Add Member and add the recipient to your home. Then, devices in the home can be shared with the recipient in bulk.

2.8

Notifications

Receive phone notifications when this device's status changes to offline.

To turn on this function, under "**Device Offline Notification**" toggle [**Offline Notification**] ON.



Note: Offline notification may experience delays.

2.9

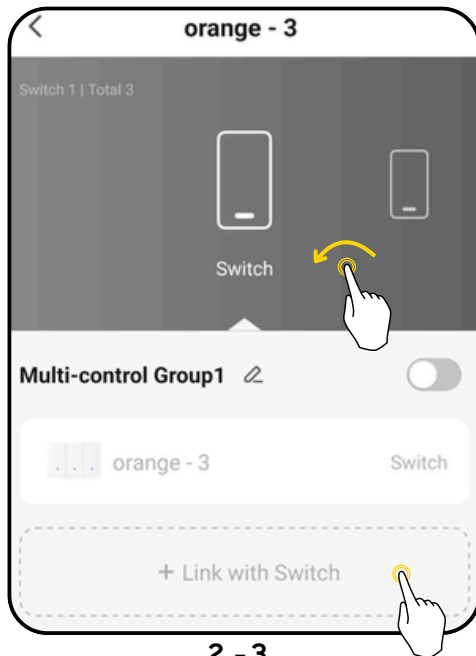
Multi-Control

Set multiple switch devices to activate when triggering a switch.

If your switch has multiple buttons, you can arrange each button to control different switch devices.

4. CONFIGURATION

1. Tap [**Multi-Control Association**].
2. Swipe to the desired switch button you wish to edit. (1 gang version can skip this step.)
3. Tap [**+ Link with Switch**].
4. Select the other Switch you wish to align with.
5. If the switch has multiple buttons, select which button you wish to pair.



2. - 3.



4.

2.10

FAQ Access a list of questions that are related to this product.
Tap [**More**] to access the general FAQ.

2.11

Shortcut

Add a shortcut onto your phone home screen for easier access.

1. Tap [**Add to Home Screen**].
2. Tap [**Go**].
3. Tap [**Add**].

2.12

OTA Updates

Check for the latest firmware updates.

Toggle ON [**Auto Upgrade**], if you wish to automatically update the device when a new update is detected.

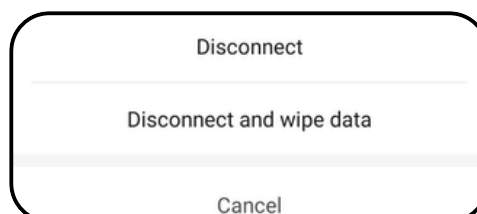
2.13

Disconnect Device

Remove and disconnect the device from your app.

Disconnect: You will remove the device and all related automation settings will be deleted. Tap [**Disconnect**] > [**Confirm**].

Disconnect & Wipe Data: You will remove the device and all related data will be deleted. Tap [**Disconnect and wipe data**] > [**Confirm**].

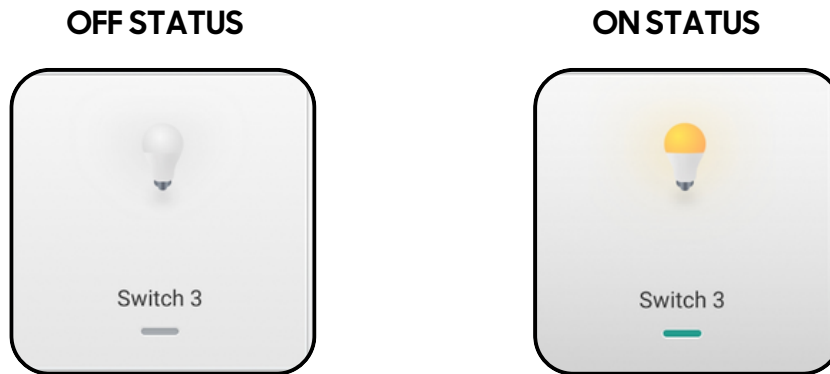


4. CONFIGURATION

3 SWITCH FUNCTION

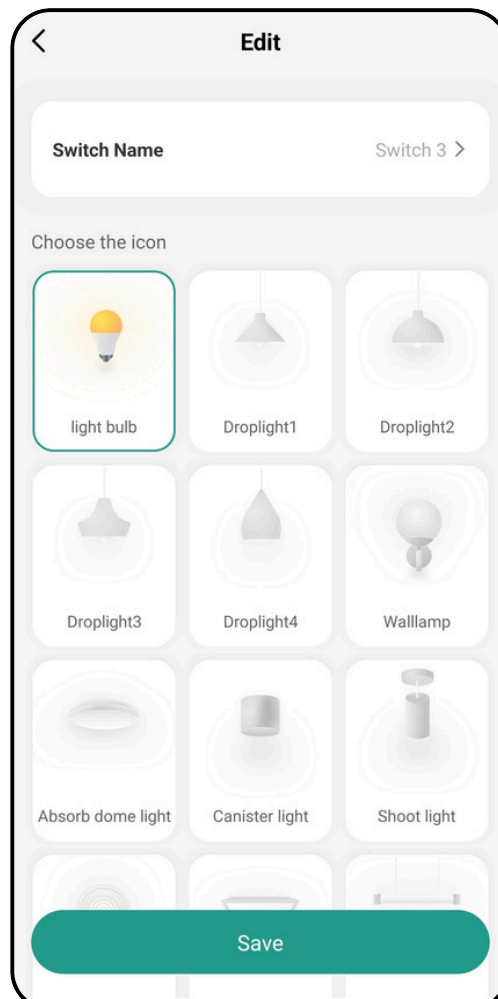
- **Short Tap:**

Tap the switch key to turn on and off the designated function. The icon will change depending on the ON/OFF status.



- **Long Press:**

1. Press and hold the switch icon until the [**Edit**] Page appears.
2. Select the device name to change or choose an icon.
3. Press [**Save**] to update the changes.



4. CONFIGURATION

4 SWITCH ALL "ON"

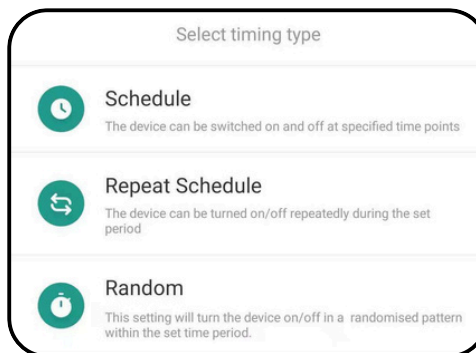
- Press [ON] to activate all switches.

5 SWITCH ALL "OFF"

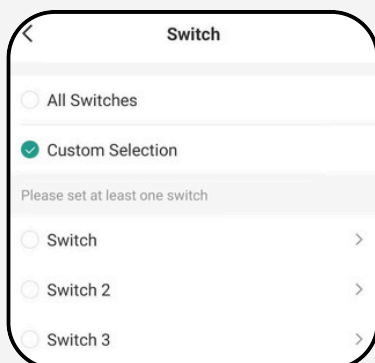
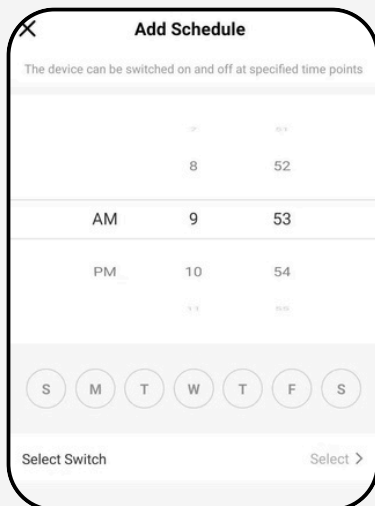
- Press [OFF] to deactivate all switches.

6 SET SCHEDULE

Set up a reoccurring routine for your smart devices with "🕒". Tap "⊕" to select the Timing Type.



- [Schedule]: The device can be switched on and off at specified time points.



Time: Select the time.

Day: Select which day of the week this command is activated.

- **Select Switch:** Select which switch follows this schedule.

All Switches: Set the status for all switches.

Custom Selection: Set the status for single switch.

Disclaimer: Routine Schedules are based on the cloud server. If the server fails, the schedules will not be activated.

4. CONFIGURATION

- [**Repeat Schedule**]: The device can be turned on/off repeatedly during the set period.

Add Repeat Schedule

The device can be turned on/off repeatedly during the set period

Start Time	End Time
8 : 56	9 : 56
AM 9 : 57	10 : 57 AM
PM 10 : 58	11 : 58 PM

Select Switch Select >

Duration Settings

Within the timer range, you can set the minimum duration for the device to turn on/off. The device can repeatedly execute multiple on/off cycles.

Power On Duration Select >

Power Off Duration Select >

Switch Selection

Please select at least one switch

Switch

Switch 2

Switch 3

Switch 4

Cancel Sure

Duration Settings

Please select at least one duration

00 Hour	01 Minute
01	02
02	03
03	04

Cancel Confirm

Time: Select the time.

Day: Select which day of the week this command is activated.

- **Switch Selection:** Select which switch follows this schedule.

- **Duration Settings:**
Select [**Power On Duration**] for how long the device stays on.
Select [**Power Off Duration**] for how long the device stays off.

4. CONFIGURATION

- **[Random]:** The equipment can be turned on/off at random during the set period, creating the illusion that people are at home.

Add Random

This setting will turn the device on/off in a randomised pattern within the set time period.

Start Time	End Time
AM 3 11	4 11 AM
PM 4 12	5 12 PM
5 13	6 13

S M T W T F S

Select Switch Select >

Time: Select the time.

Day: Select which day of the week this command is activated.

Switch

Switch 2

Switch 3

Switch 4

Cancel Sure

Select Switch: Select which switch follows this schedule.

- **[Filter]:** Filter the schedule list based on the switch and schedule type.

Schedule

Switch type

All Switches Switch Switch 2

Switch 3 Switch 4

Schedule type

All Types Schedule Repeat Sch...

Random

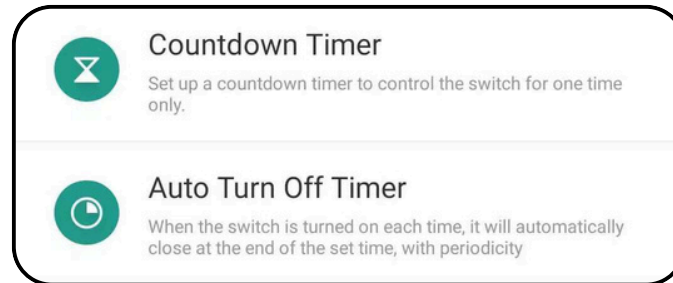
1. Tap on the **Filter** icon.
2. Select the type of Switch and the Schedule Type.
3. Tap [**Confirm**].

Disclaimer: Routine Schedules are based on the cloud server. If the server fails, the schedules will not be activated.

4. CONFIGURATION

7 COUNTDOWN TIMER & AUTO TURN OFF TIMER

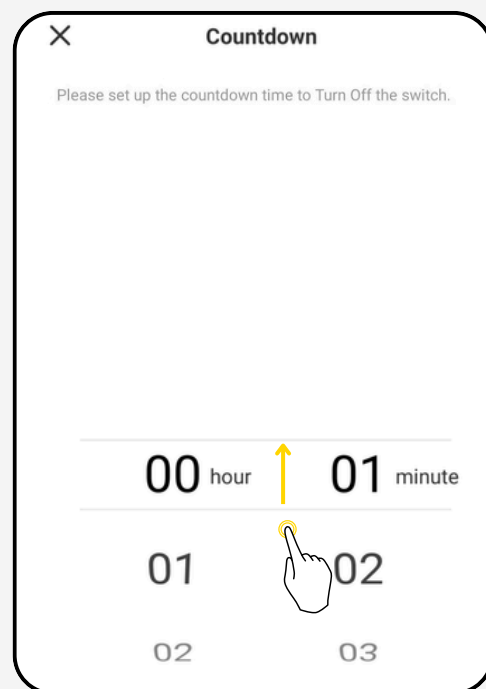
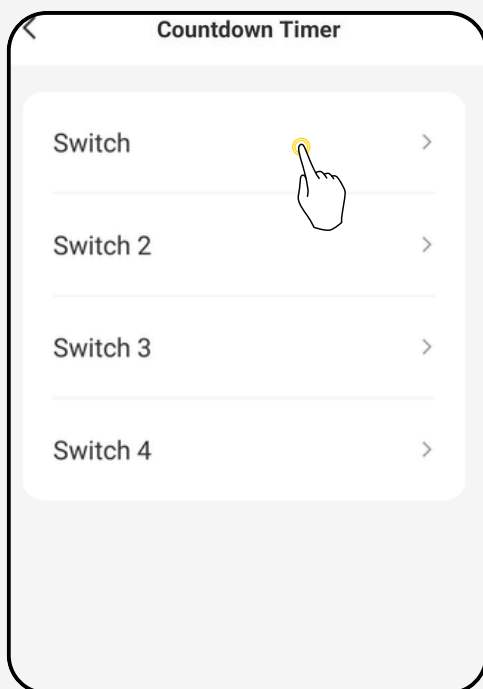
Set up a reoccurring routine for your smart devices with " ⌚ ".



- [**Countdown Timer**]: At the end of the set time, the switch will automatically turn on/ off. This will only be executed once.
 1. Tap the " ⌚ " icon.
 2. Tap [**Countdown Timer**].
 3. Tap on the switch you wish to set a countdown.
 4. Scroll to select the delayed timeframe.
 5. Tap [**Done**].

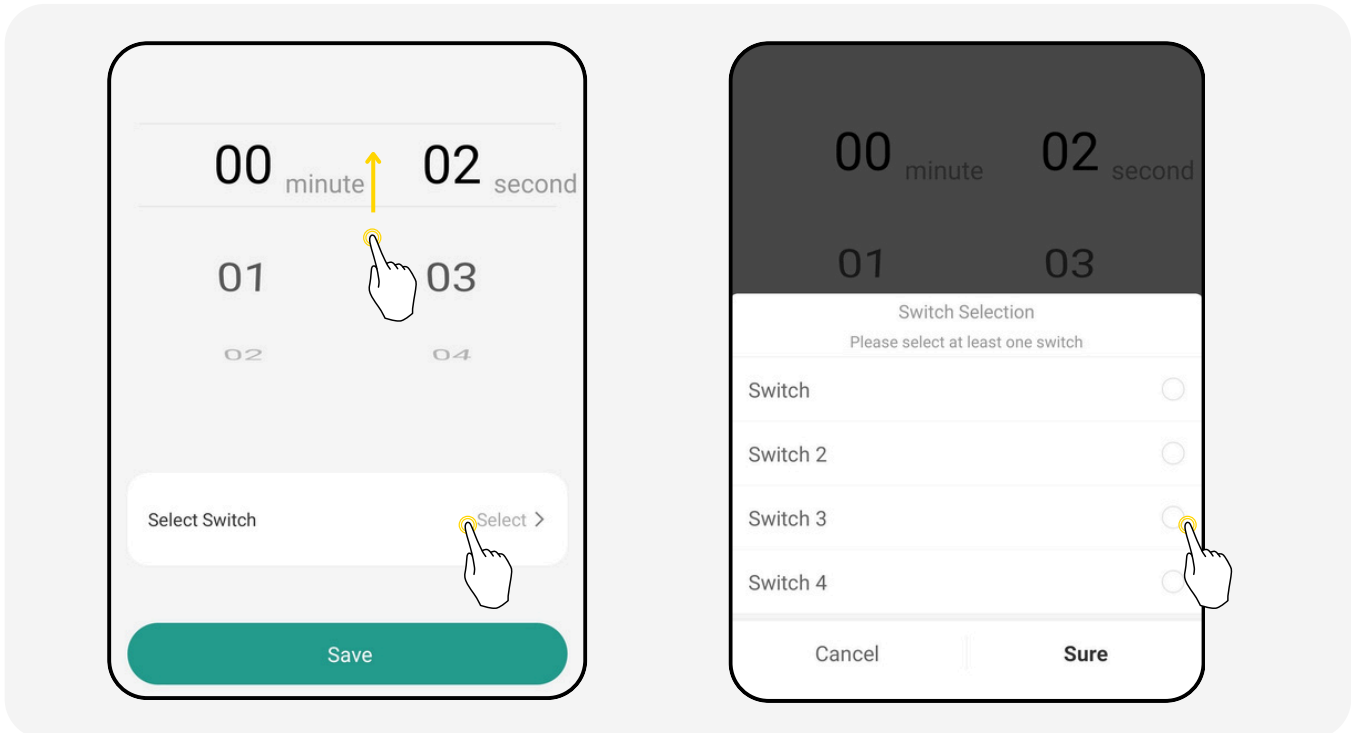


Note: The countdown will not repeat as it is only executed once. Repeating the steps above will override any existing countdown settings.



4. CONFIGURATION

- **[Auto Turn Off Timer]**: When the switch is turned on each time, it will automatically close at the end of the set time periodically.
 1. Tap the "⌚" Icon.
 2. Tap **[Auto Turn Off Timer]**.
 3. Tap on the "+" Icon.
 4. Scroll to select the delayed timeframe.
 5. Tap on **[Select Switch]**, Select the Switch (Multiple selection is accepted).
 6. Tap **[Sure]** > **[Save]**.

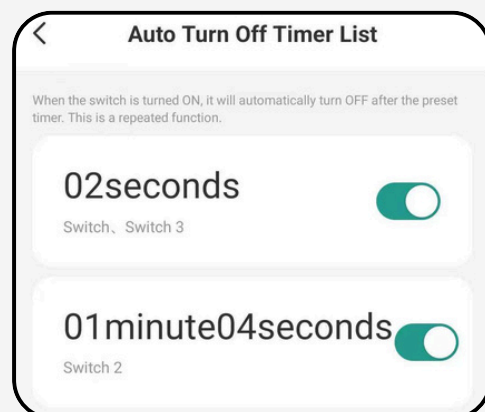
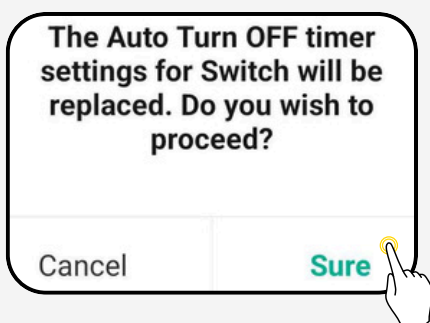


*** Note:** Each switch can only support one Delay Close setting.
To replace an existing delay setting, simply repeat the steps to override.

Tap **[Sure]** to confirm new delay settings.

The updated settings should be viewable on the **Delay Shut** page.

Toggle OFF, to turn off the delay.



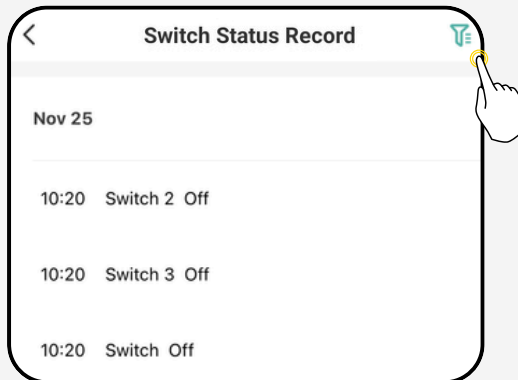
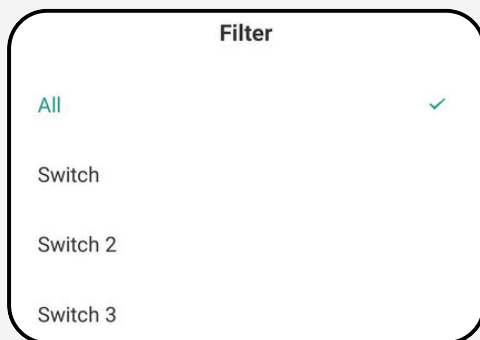
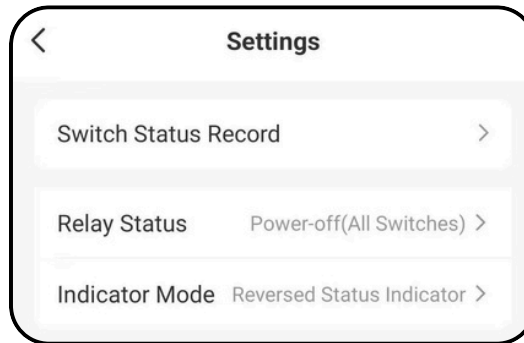
* Long press to delete the timer.

Disclaimer: Routine Schedules are based on the cloud server. If the server fails, the schedules will not be activated.

4. CONFIGURATION

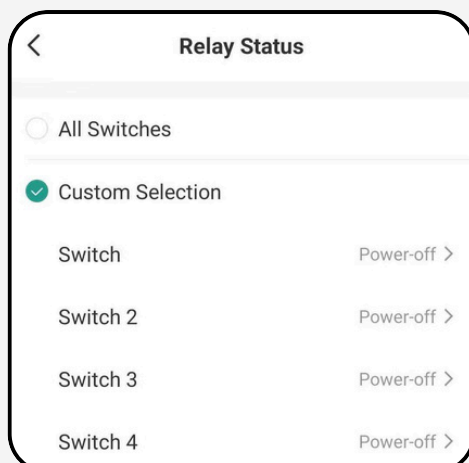
8 SETTINGS

Set up the devices with "☰".



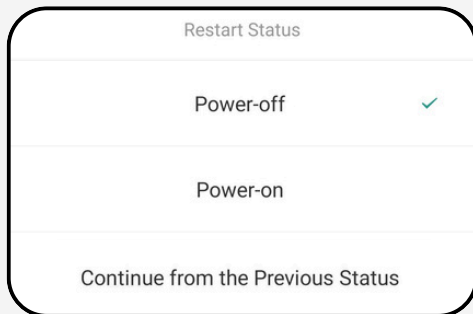
- **[Switch Status Record]**: View the smart device activation and de-activation history.

To Filter the switch log, you can tap on the "☰" icon, and select the switch you wish to view.



- **[Relay Status]**: Set your preferred switch status for when power is restored after a power outage.
 1. Go to **Settings** by tapping the "☰" icon.
 2. Tap **[Relay Status]**.
 3. Choose option to edit all switches or customise individually with **[Custom Selection]**.

4. CONFIGURATION



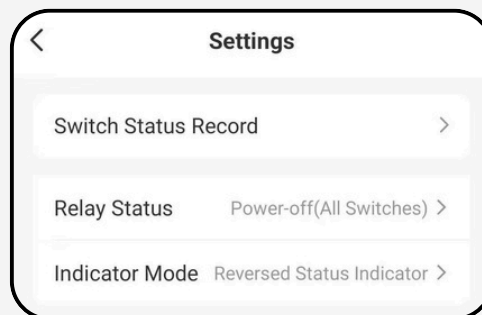
4. Select Restart Status Type.

[Power-off]: The device will remain OFF when the power is recovered.

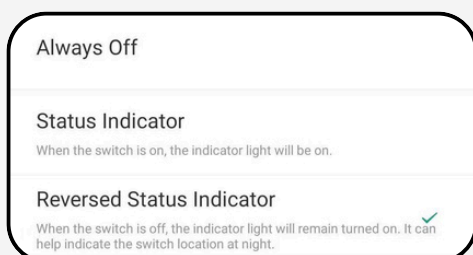
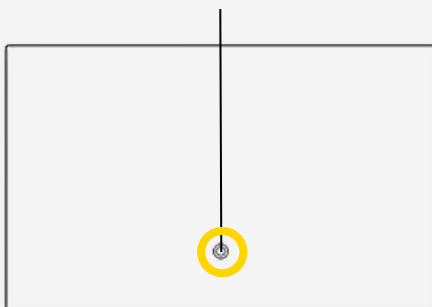
[Power-on]: The device will turn ON when the power is recovered.

[Continue from the Previous Status]: The device will continue the last status it was set before the power cut.

The Restart Status Settings should be visible on the **Settings** page.



Indicator Light



- **[Indicator Mode]**: Select the preferred LED light setting displayed on the switch.

1. Go to **Settings** by tapping the "☰" icon.

2. Tap **[Indicator Mode]**.

3. Select the preferred Indication Status:

[Always Off]: The Indicator Light will be turned off at all times.

[Status Indicator]: When the switch is on, the indicator light will be on.

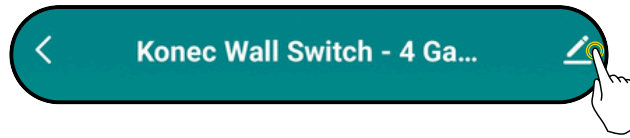
[Reversed Status Indicator]: When the switch is off, the indicator light will remain turned on. It can help indicate the switch location at night.

4. CONFIGURATION

4.4 REMOVE FROM ARKS

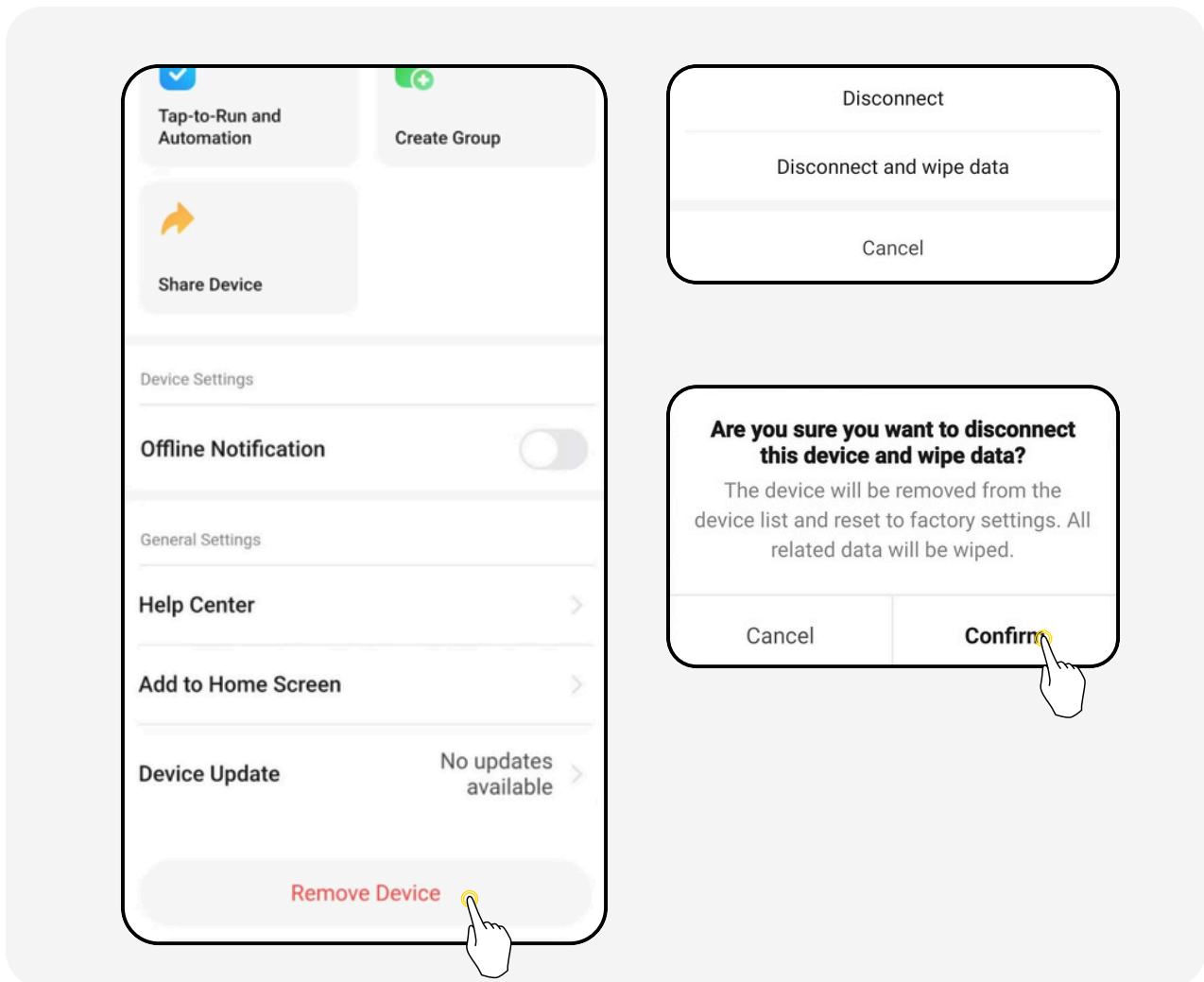
Remove and disconnect the device from your app.

1. On the Home screen, select the switch and tap on the **Device Details** icon "⌵".



2. Tap on **[Remove Device]**.
3. Select which method you wish to remove the device:

- **Disconnect:** You will remove the device and all related automation settings will be deleted. Tap **[Disconnect]** > **[Confirm]**.
- **Disconnect & Wipe Data:** You will remove the device and all related data will be deleted. Tap **[Disconnect and wipe data]** > **[Confirm]**.

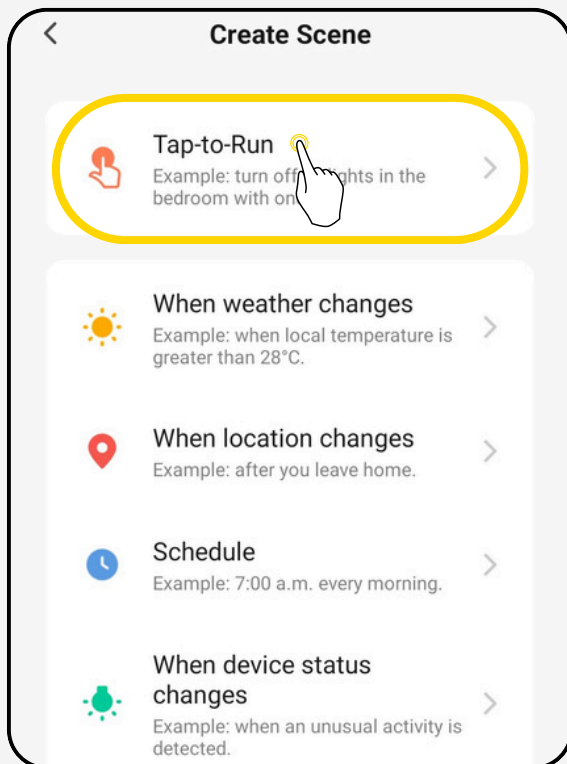
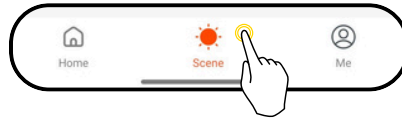


Disclaimer: Hard resetting the device will also remove the device from the Arks app.

5. SCENE

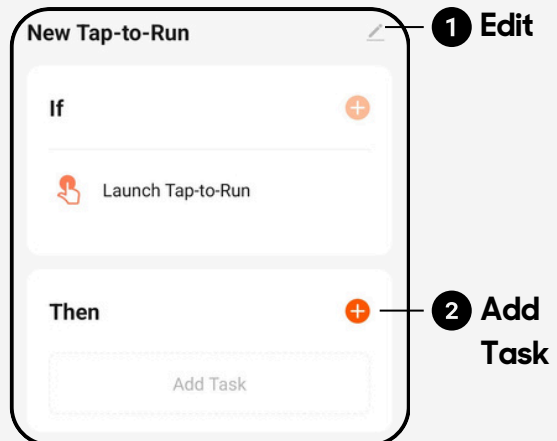
SCENE SETTING

1. On the Home Page, tap the [**Scene**] tab or [**+**] icon to access your **Automation** and **Tap-to-Run** List.
2. Tap [**Create Scene**].

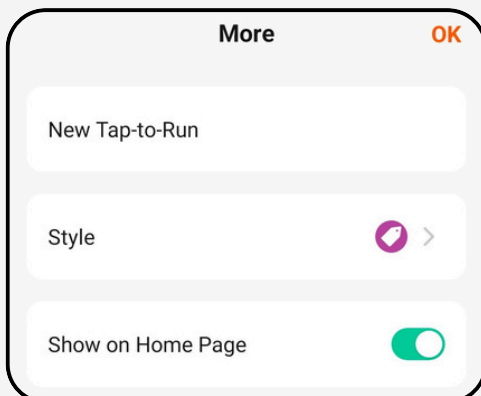


Tap-to-Run

If the scene icon is tapped, the selected devices will activate according to the set task.



1 Edit



Enter Scene Name: Rename the scene for easier identification.

Style: Choose the colour and icon theme for the scene.

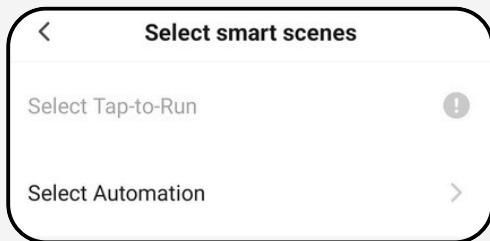
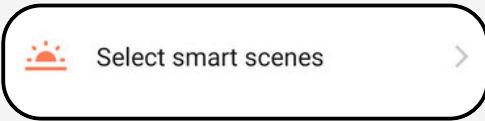
Show on Home Page: Toggle On or Off to display scene on the Home page.

5. SCENE

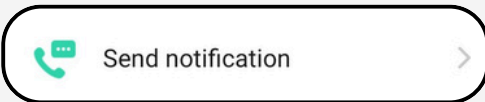
- [Add Task]:



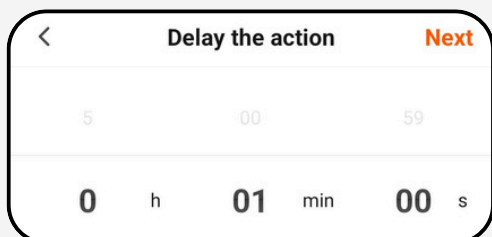
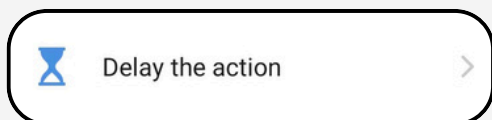
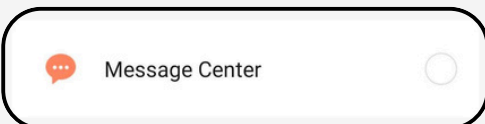
Select which device you want to activate when the scene is triggered.



Link to another Smart scene to be activated when this scene is triggered.



Receive phone notifications when this device's status changes.



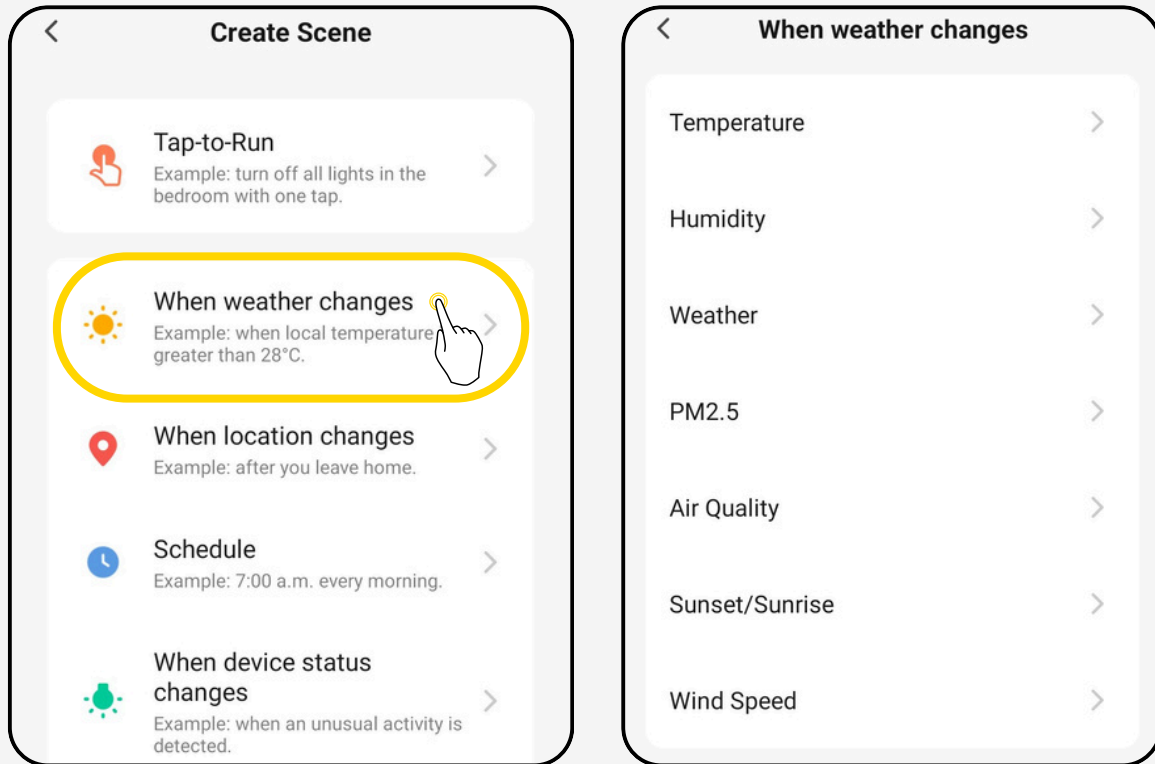
Set a delayed response where the selected devices will trigger after the set time.

5. SCENE



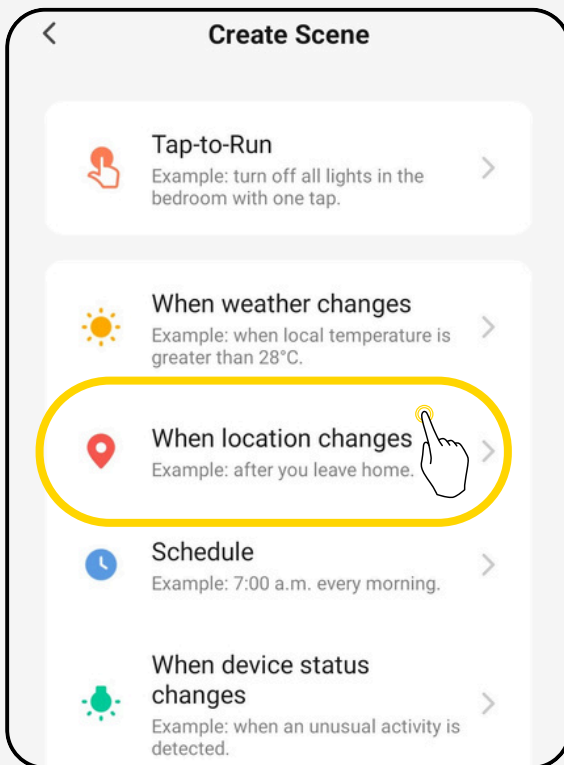
When Weather Changes

Activate automated scenes based on the live environment readings within your Smart Home.



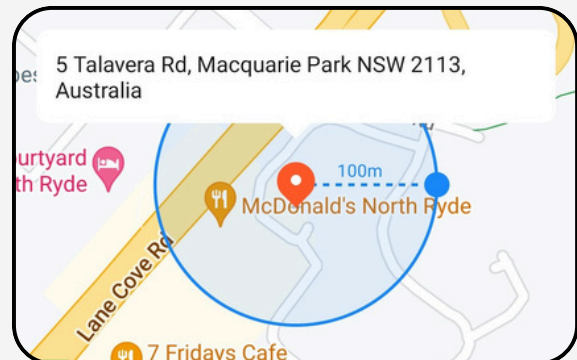
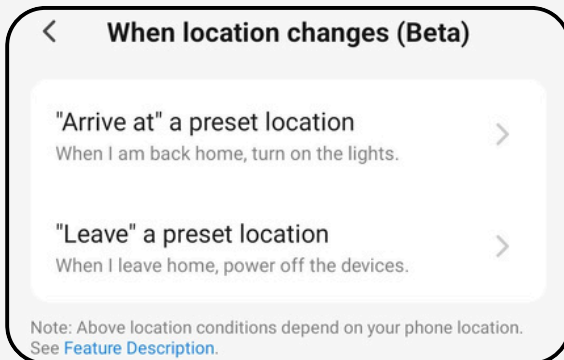
1. Select the environment condition you would like to trigger the scene automation.
2. Tap [**Current City**] and confirm your address location.
3. Select the environment conditions you would like to trigger the scene.
4. Under **Add Task**, select the desired task.
5. You can rename the scene by selecting the [] icon.
6. Tap [**Save**] and the scene will be added.

5. SCENE



When Location Changes: Activate automated scenes depending on your location; inside or outside your Smart Home.

Note: This function requires constant access to your location on your mobile to activate the scene. This access will not be collected or stored.



1

2

1 Select the condition on when the scene should activate:

Arrive: When you arrive home, the device will activate.

Leave: When you leave the vicinity, the device will activate.

2 Select the condition on when the scene should activate:


1. Select [**Arrive at**] or [**Leave**].

2. Confirm the Smart Home location.

3. Touch and drag the blue circle to confirm the detection proximity.

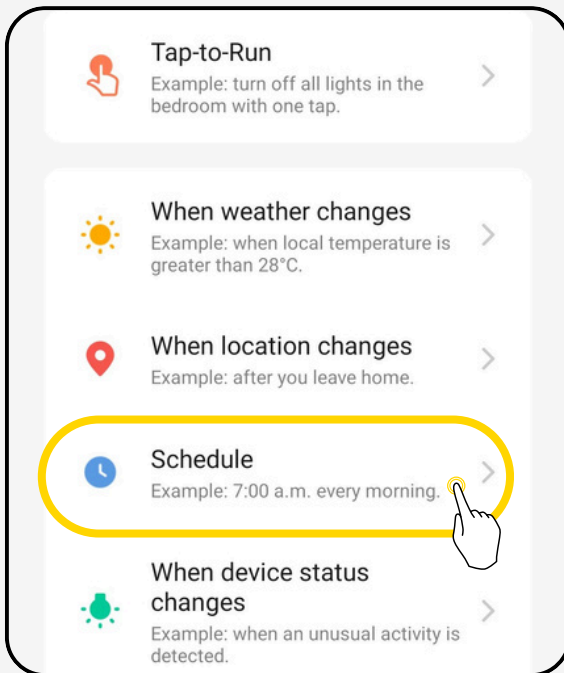
4. Tap [**Confirm**].

5. Under **Add Task**, select the desired task.

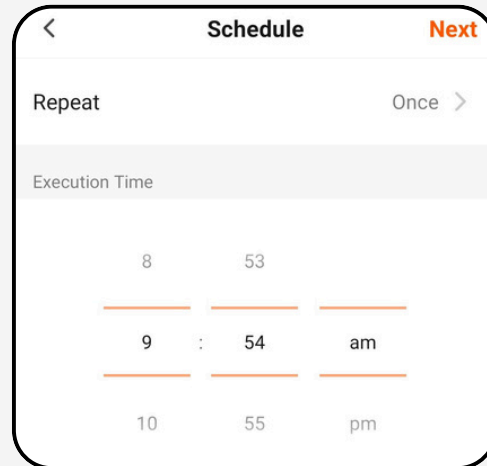
6. You can rename the scene by selecting the [] icon.

7. Tap [**Save**] and the scene will be added.

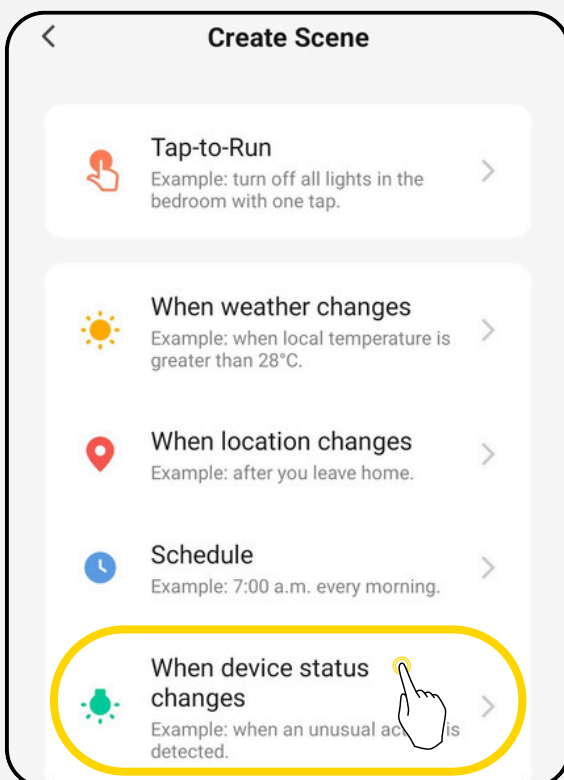
5. SCENE



Schedule: Set a repeated time schedule which will automatically activate when it reached the set time.



1. Tap on [**Repeat**] > Select which day of the week you wish for the device to activate.
2. Set the Execution time > Tap [**Next**].
3. Under **Add Task**, select the desired task.
4. You can rename the scene by selecting the [**↵**] icon.
5. Tap [**Save**] and the scene will be added.



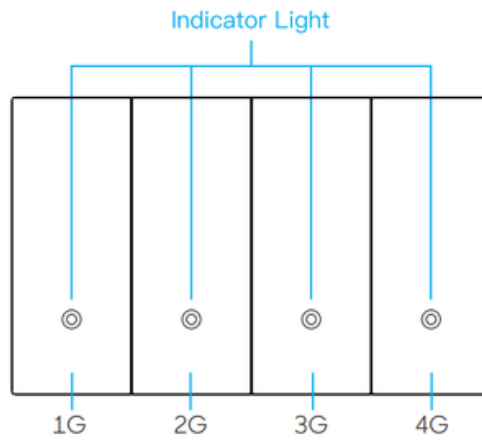
When device status changes: Automatically trigger the automation when the status on a smart devices changes and notifies the system.

1. Tap on [**When device status changes**] and select the smart device.
2. In the **Select Function** page, adjust the settings based on your preference.

Note: In the Select Function page, all devices settings will differ according to its functions.

6. INDICATOR LIGHT STATUS

INDICATOR LIGHT STATUS



Light Status	Meaning
The light indicator flashes continuously and quickly.	The switch is currently on the status of configuring.
The light indicator lights up constantly.	Depending on the indicator mode: Always ON, Follow the switch status and keep it constantly on when the socket is powered on, Under night mode, when the switch is powered off, the indicator light constantly on.
The light indicator is off.	Depending on the indicator mode: Always OFF, Follow the switch status and keep it constantly off when the socket is powered on, Under night mode, when the switch is powered on, the indicator light constantly off.

7. CONTACT US

Search for "Arks" in the App Store or Google Play, or scan the QR code below to download and install the App. Click "Register" to register a new account if this is your first time to use; if you already have an account, click "Login"

Scan the QR Code to download Arks by Konec Solutions App.



IOS



Android

Konec Solutions Pty Ltd

Please do not hesitate to contact us if you have any questions.



Konec Official Web

<http://www.konec.com.au>



Hotline

1300 2 56632 (1300 2 KONEC)



Sales & Partnership

sales@konec.com.au



Customer Support

support@konec.com.au



Address

L3 5 Talavera Road Macquarie Park NSW 2113
