

# BioLite N2

Outdoor IP Fingerprint Terminal



Suprema BioLite N2 is a Suprema's 2nd generation outdoor fingerprint terminal that provides comprehensive access control and time attendance features based on Suprema's latest biometric technology and security platform. BioLite N2 provides class-leading performance and security by featuring Suprema's latest fingerprint algorithm coupled with world's best fingerprint sensor. Packed in a rugged IP67 housing, BioLite N2 added flexibility in system design with multi-class RFID reading technology.



# BioLite N2

## Outdoor IP Fingerprint Terminal

### Features



#### Best-in-class Performance

- Latest Suprema fingerprint algorithm
- Powerful 1.2 GHz CPU



#### Multi RFID Card Reading

- LF (125kHz), HF (13.56MHz) dual band
- Reads all card types including Mobile Card (NFC and BLE)



#### Advanced Accuracy & Security

- High-precision OP6 optical sensor



#### IP67 Certified Dust & Water Protection

- Ideal for harsh environment and outdoor installation



#### Full Time Attendance Features

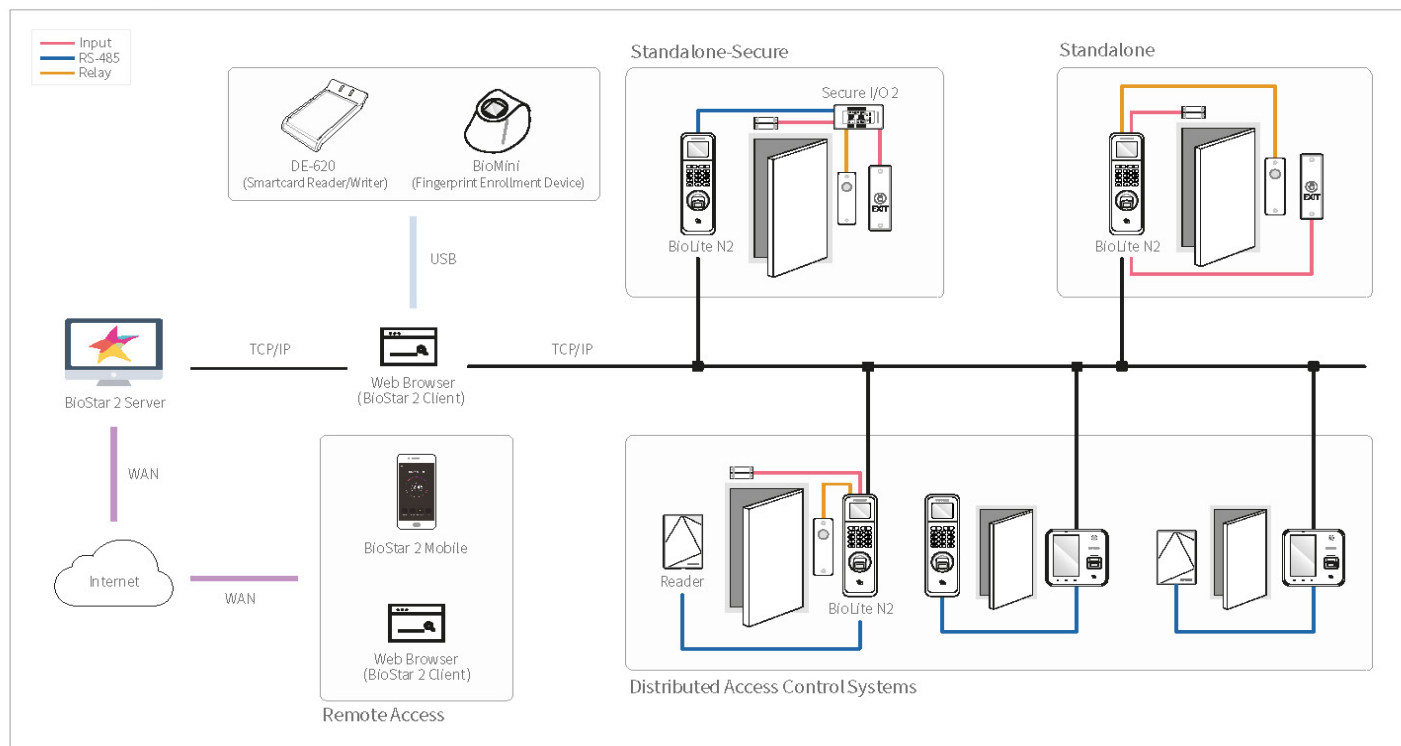
- Color LCD with Keypad for time attendance functionality

### Specifications

Biometric	Fingerprint				
Sensor Type	Optical Sensor (OP6)				
Template	SUPREMA / ISO 19794-2 / ANSI 378				
Extractor / Matcher	MINEX certified and compliant				
RF Option	<table><tr><th>BLN2-ODB</th><th>BLN2-OAB</th></tr><tr><td>125kHz EM &amp; 13.56MHz MIFARE, MIFARE Plus, DESFire/EV1 &amp; 2.4GHz BLE</td><td>125kHz EM, HID Prox &amp; 13.56MHz MIFARE, MIFARE Plus, DESFire/EV1, FeliCa, iCLASS SE/SR, NFC &amp; 2.4GHz BLE</td></tr></table>	BLN2-ODB	BLN2-OAB	125kHz EM & 13.56MHz MIFARE, MIFARE Plus, DESFire/EV1 & 2.4GHz BLE	125kHz EM, HID Prox & 13.56MHz MIFARE, MIFARE Plus, DESFire/EV1, FeliCa, iCLASS SE/SR, NFC & 2.4GHz BLE
BLN2-ODB	BLN2-OAB				
125kHz EM & 13.56MHz MIFARE, MIFARE Plus, DESFire/EV1 & 2.4GHz BLE	125kHz EM, HID Prox & 13.56MHz MIFARE, MIFARE Plus, DESFire/EV1, FeliCa, iCLASS SE/SR, NFC & 2.4GHz BLE				
CPU	1.2 GHz				
Memory	4GB Flash + 64MB RAM				
Max. User	10,000				
Max. Template	20,000*				
Max. Logs	1,000,000				
LCD	1.77" color LCD				
Sound	16-bit Hi-Fi				
Ethernet	10/100 Mbps, auto MDI/MDI-X				
RS-485	1ch Host or Slave (Selectable)				
Wiegand	1ch Input or Output (Selectable)				
TTL	2ch Input				
Relay	1 Relay				
Ingress Protection	IP67				
Tamper	Supported				
Power	DC 12V				
Operating Temperature	-20°C ~ 50 °C				
Operating Humidity	0% ~ 80%, non-condensing				
Dimensions (WxHxD, mm)	58 x 190 x 44				
Certificates	CE, FCC, KC, RoHS, REACH, WEEE				

\* Two templates per finger

### System Configurations



**suprema**  
BIOMETRICS & SECURITY

### Suprema Inc.

17F Parkview Tower, 248, Jeongjail-ro, Bundang-gu, Seongnam-si, Gyeonggi-do, 13554, Rep. of KOREA

Tel: +82 31 783 4502 | Fax: +82 31 783 4503 | Inquiry: sales@supremainc.com | www.supremainc.com

©2018 Suprema Inc. Suprema and identifying product names and numbers herein are registered trademarks of Suprema, Inc. All non-Suprema brands and product names are trademarks or registered trademarks of their respective companies. Product appearance, build status and/or specifications are subject to change without notice.

[AHL-BLN2-180403-04-EN]