

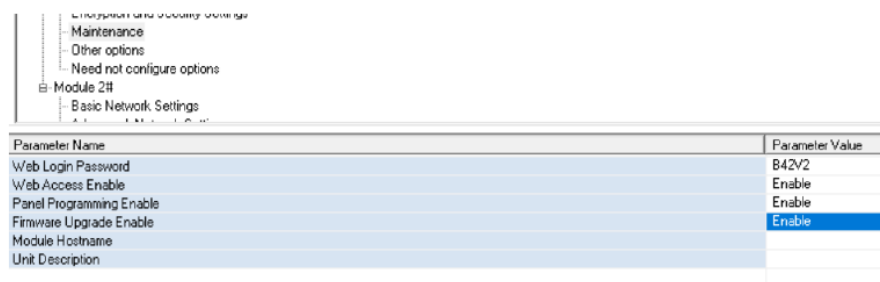
Firmware upgrade of B426-M by browsing in over IP

A Firmware upgrade for an B426-M IP Module can be achieved by having the firmware upgrade file and using an laptop to browse into the module over the same IP network it is operating on.

To do so the B426-M module MUST have **Firmware upgrade enable** turned on (**ENABLED**) in system programming by the Installer.

If you are on the same network and you know the IP address of the B426-M you can browse into the module and perform the firmware upgrade.

Step 1: connect with AlinkPlus and turn on **Firmware Upgrade Enable**



The screenshot shows the AlinkPlus software interface. On the left, a tree view lists various settings categories: 'Maintenance and Troubleshooting', 'Maintenance', 'Other options', 'Need not configure options', 'Module 2#', and 'Basic Network Settings'. The 'Firmware Upgrade Enable' parameter is highlighted in blue. The main table displays the following parameters and their values:

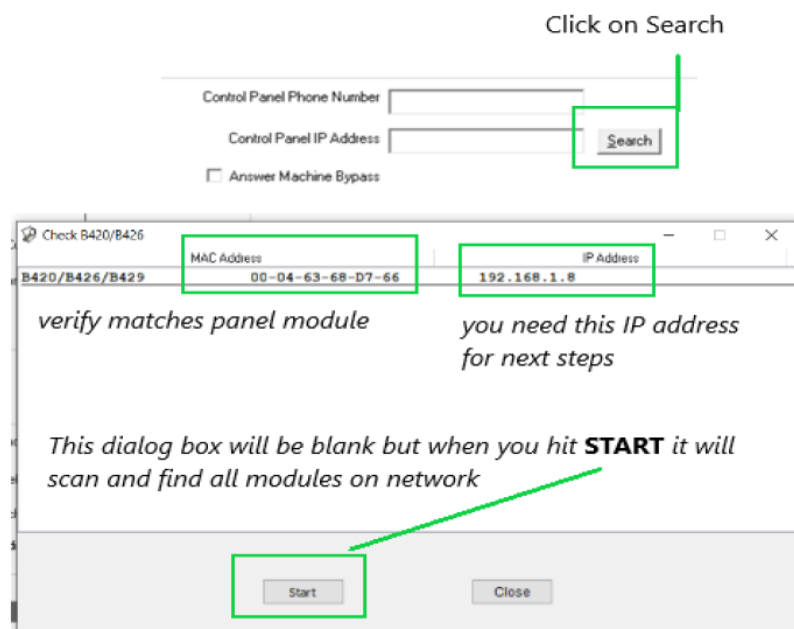
Parameter Name	Parameter Value
Web Login Password	B42V2
Web Access Enable	Enable
Panel Programming Enable	Enable
Firmware Upgrade Enable	Enable
Module Hostname	
Unit Description	

The panel MUST have **Firmware Upgrade Enable** set to **ENABLE** in AlinkPlus.

The above setting can only be changed by the Installer using AlinkPlus and cannot be changed by an End User or codepad programming

Step 2: Find IP Address of B426-M module.

Open AlinkPlus software profile for panel. On the Customer Information screen Click on SEARCH then START on the dialog box.



The screenshot shows the AlinkPlus software interface. At the top, there is a 'Click on Search' label. Below it, there are two input fields: 'Control Panel Phone Number' and 'Control Panel IP Address'. A green box highlights the 'Search' button. Below the input fields, there is a checkbox labeled 'Answer Machine Bypass'. Below the 'Search' button, there is a dialog box titled 'Check B420/B426'. The dialog box contains the following text:

MAC Address: 00-04-63-68-D7-66
IP Address: 192.168.1.8

verify matches panel module
you need this IP address for next steps

This dialog box will be blank but when you hit **START** it will scan and find all modules on network

Start Close

The Module IP Address may also be found by logging into the customers IP router using a laptop and browsing to the connected devices

The device name for the B426-M module would appear as **Bxxxxxx** and you would see the local IP address.

You need this IP address for the next step.

Step 3: Go to your internet browser on the laptop with AlinkPlus and enter HTTPS:// and the IP address of the module

https://192.168.1.8

B426 Login

Password: Login

Now enter the password: **B42V2** and hit LOGIN

You will be taken to the HOME Page

We are on HOME page

Device Information	
IP Address:	192.168.1.8
MAC Address:	68-4d-6d-c9-60-8300-204-63ff-fe68-d766
Firmware Version:	03.10.0030 (May 15 2020 11:02:41)
IP Stack Version:	08.09.0900
UPKI Version:	OpenSSL 1.0.2r 26 Feb 2019
Product ID:	86476.47251557029
Ethernet Speed:	100Mbps
Ethernet Duplex:	Full Duplex
UPnP Portmapping:	Not Set Up
Bootloader Version:	1.01.001

Now on MAINTENANCE tab

Maintenance	
Web Access Password:	*****
Web Access Enable:	Yes
Panel Programming Enable:	Yes
Firmware Upgrade Enable:	Yes
Module Hostname:	B68D766
Unit Description:	

Click on FIRMWARE UPDATE

Module Hostname: B68D766

Unit:

Your IP address will show here

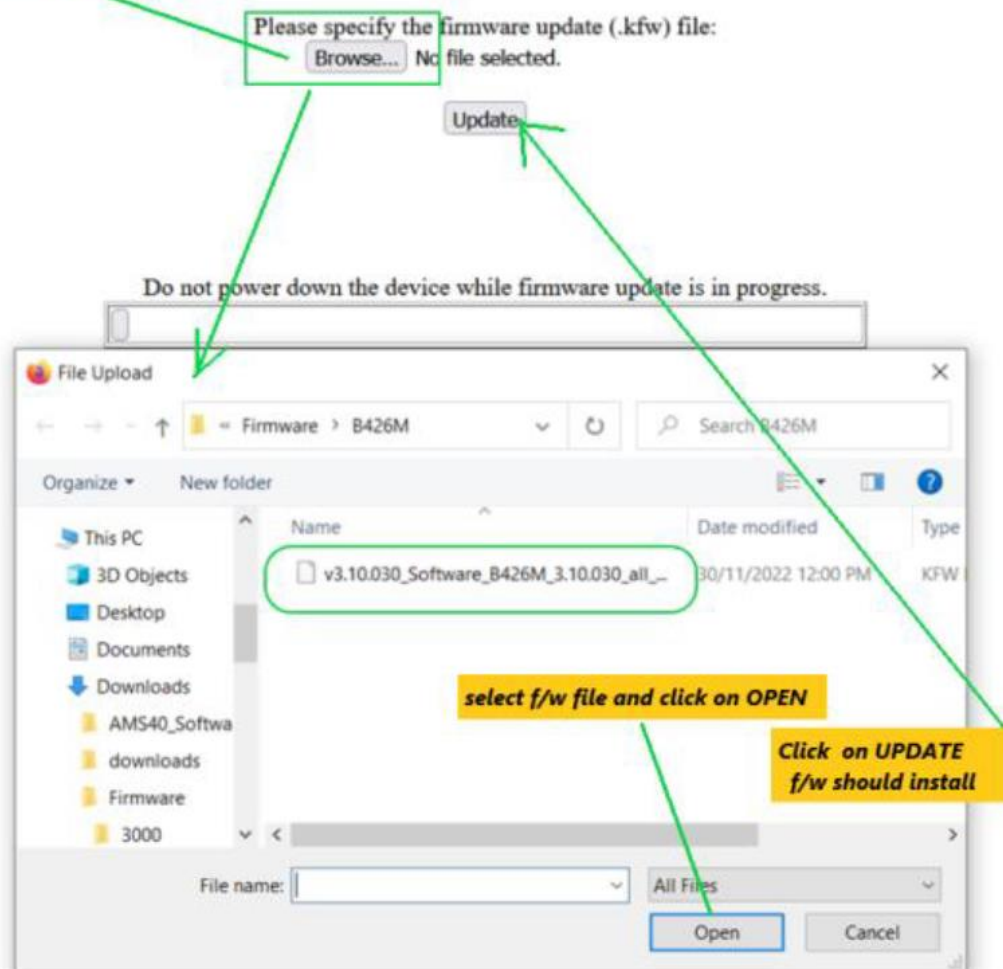
This operation enters firmware update mode. Normal operations are disabled until the update finishes. Continue?

OK Cancel

You will see **Firmware Update**

Firmware update

You will now be prompted to browse for the firmware



Follow above steps and click UPDATE

Follow all prompts on screen as firmware is updated.



When finished select **LOGOUT** to exit setup.