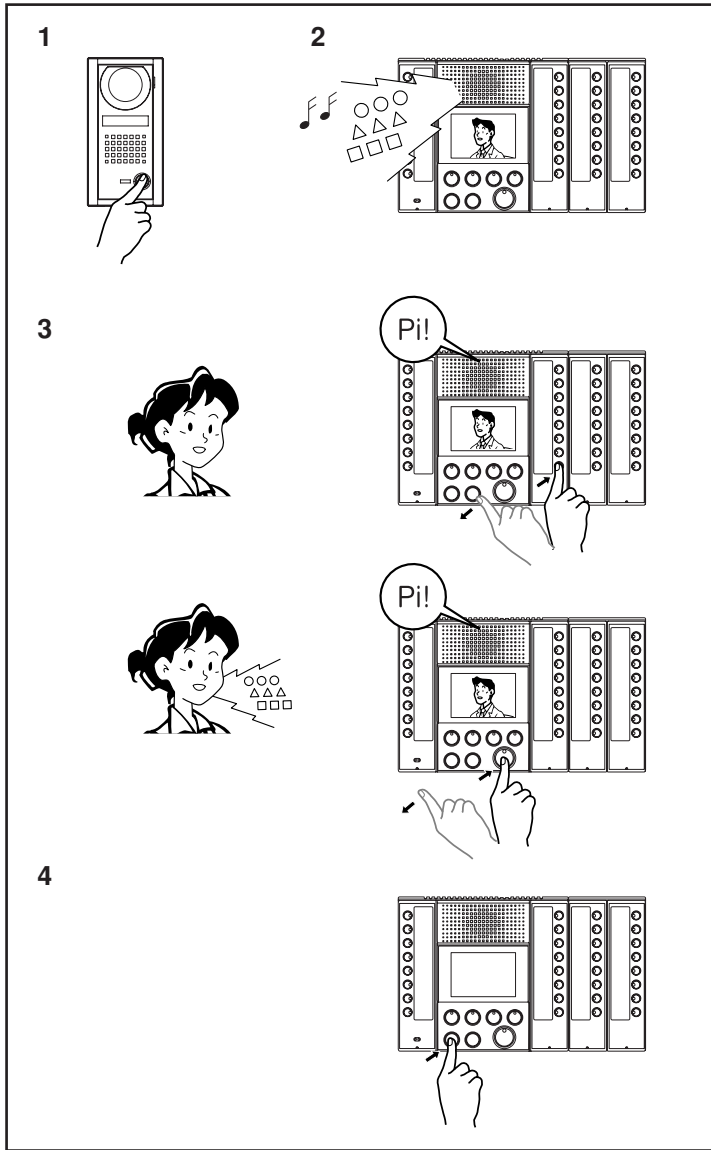


8 OPERATIONS

8-1



Calling a master station from door station and communicating

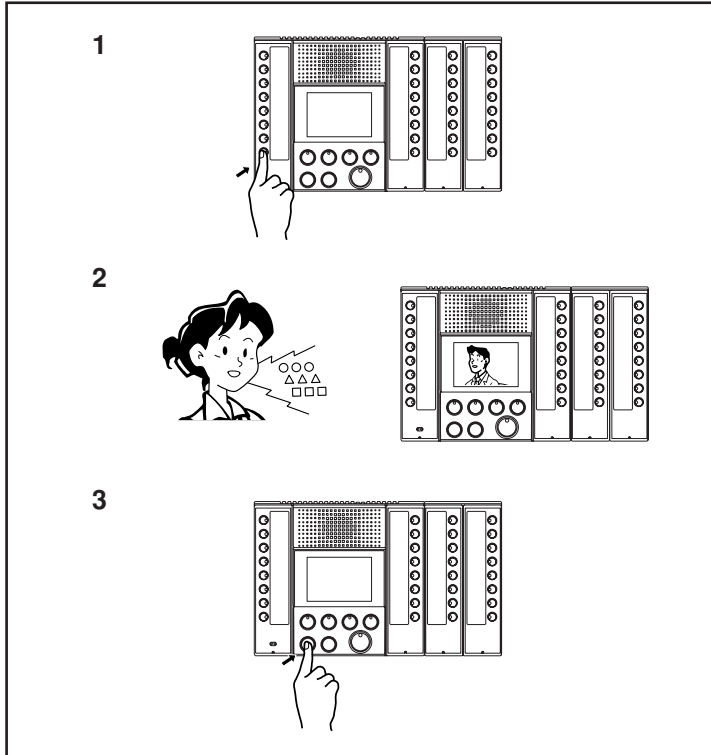
There are two priority levels for calls from door stations, "Normal" and "Priority".

1. Press the door station CALL button.
2. The calling tone rings on the master station (for a normal call, an intermittent tremolo sound; for a priority call, a rapid intermittent tremolo sound) and the selector button LED for the individual door station flashes (two flashes in a row for a priority call). If the door station has a camera, the video from the door station is displayed on the master station monitor. The call tone continues to ring until answered or is timed out (based on setting). You can stop calling tone by pressing the OFF button.
3. If you press the individual door station selector button, the LED stops flashing and stays lit and you can talk hands-free to that station. If only the TALK button is pressed to answer a call, hands-free communication initiates with the door station at the highest priority call. The Talk LED lights when you talk and goes off as you listen to the caller.
4. Press the OFF button again to end the communication. The call also ends automatically when the set talk time limit is reached.

- NOTES:
1. If you hold down the TALK button for at least one second, communication switches to press-to-talk mode. Hold down the TALK button to talk and release to listen to the caller. You cannot switch back from press-to-talk communication to hands-free communication.
 2. If other master station press selector button of in use door station or in use master station, the busy signal (beep-beep-beep) is heard at the master station.
 3. The microphone is muted while you hold down the privacy button on the master station at communication.
 4. You can connect a footswitch and use it the same way as the TALK button.
 5. The master station can display calls up to eight stations at the same time. If more than eight calls, they will be displayed in order of priority.
 6. You can adjust the calling tone, transmit volume, and receive volume with the volume controls at the bottom of the master station.
 7. You can use a headset (not included in the system) instead of built-in the master station's speaker and microphone.

	Calling tone	Selector button LED display
Call (normal)	Intermittent tremolo sound	Slow flashing
Call (priority)	Rapid intermittent tremolo sound	Rapid flashing

8-2



Calling a master station from a master station and communicating

1. Press individual selector button of master station.
2. The pre-tone (Pi-Po-n) sounds both master stations, and starts hands-free communication. The Talk LED lights when you talk and goes off as you listen to the caller.
3. Press the OFF button to end the communication. You can end the call either master station. The call also ends automatically when the set talk end time is reached.

⚠ If the called master station has privacy mode set (the privacy settings button is lit up), communication is only one-way, from the calling master station to the called master station, and nothing can be heard from the called master side. Press the TALK button on the called master station for at least one second. Press-to-talk communication starts. Hold down the TALK button to talk and release to listen to the caller.

- NOTES:
1. You can connect a foot switch and use it the same way as the TALK button.
 2. You can adjust the receive volume with the volume control at bottom of the master station.
 3. You cannot call a master station while it is communicating. You will hear the busy signal (Pi-Pi-Pi).

	Calling tone	TALK button LED display	
Call and talk	Pi-Po-n	Lit	
All call	Po-o-n	Lit (called) Flashing (calling)	
Equipment error	-	Flashing	Error in device or wiring. Contact the system manager.

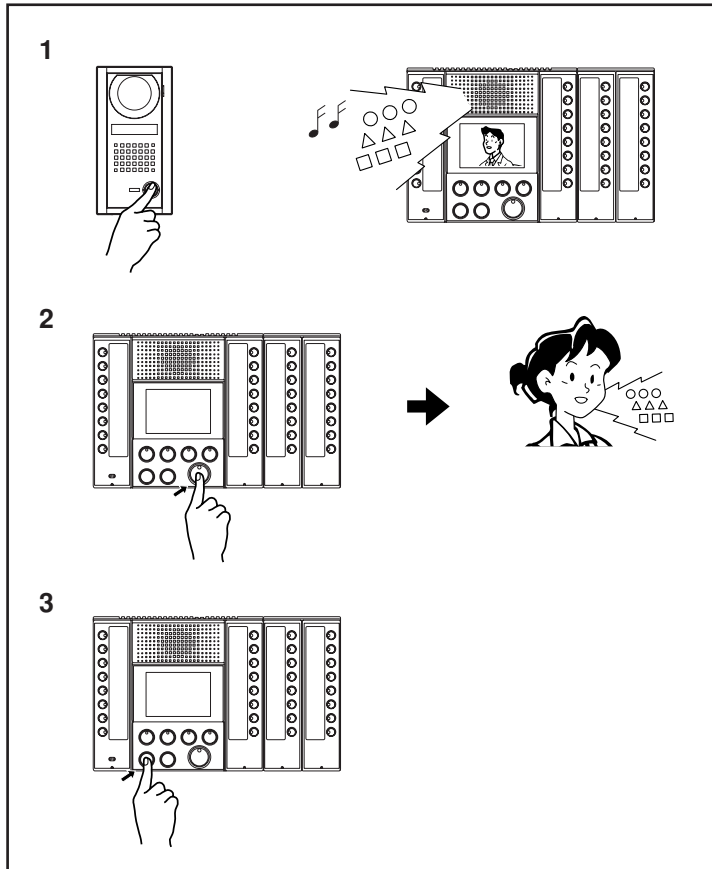
8-3

Privacy (PRIV)function

1. To make the master into privacy mode (prevent monitoring from other stations), press the privacy button (LED lights up).
 2. To cancel privacy mode, press the privacy button again (LED goes out).
- * The privacy setting cannot be changed while in communication.

Privacy setting	PRIV LED	Communicating with master station	Communicating with door station
Setting up	Lit	<ul style="list-style-type: none"> • Microphone mute • If you hold down the TALK button for at least one second, communication switches to press-to-talk. 	<ul style="list-style-type: none"> • Microphone enabled • The microphone is muted while you hold down the PRIV button.
Not set	Off	<ul style="list-style-type: none"> • Microphone enabled • The microphone is muted while you hold down the PRIV button. 	<ul style="list-style-type: none"> • Microphone enabled • The microphone is muted while you hold down the PRIV button.

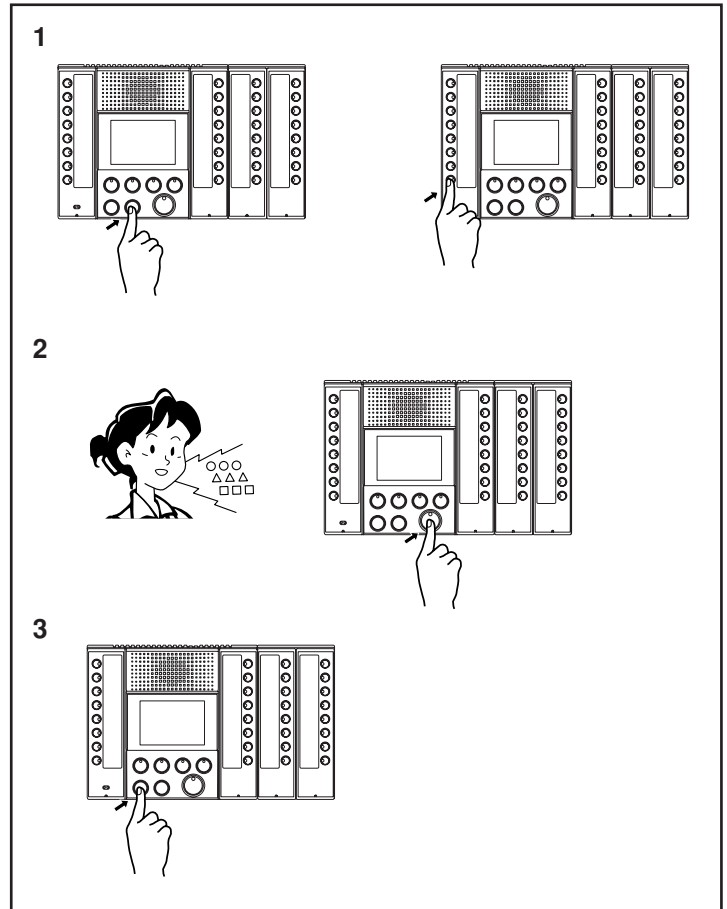
8-4



CO line call from door station and communicating

1. If the CALL button is pressed at a door station while CO Transfer feature is set (with CO Transfer button lit), the call tone rings on the master station (for a normal call, an intermittent tremolo sound; for a priority call, a rapid intermittent tremolo sound) and the selector button LED for the individual door station flashes (two flashes in a row for a priority call). At the same time, a telephone call is placed to the programmed CO line number.
 2. You can communicate with the door station from telephone.
 3. You can end communication at the telephone. The communication also ends automatically when the set talk time limit is reached. About 10 seconds before end of the call, you will hear a alarm sound (beep-beep-beep) on the telephone.
- ⚠️ 1. The maximum duration for a CO line call is 300 seconds (5 min), even if the call timer is set to "Infinite".
- ⚠️ 2. Using this function requires the K-1900-5 Hot-Line Pulse Dialer made by Viking Electronics, Inc. Set the dialer according to the instructions in this user's manual.
- NOTES: 1. If there are multiple calls, the call from the door station with the highest call priority is transferred.
2. Answering at any master station during CO transfer feature will stop the CO transfer.
 3. There are no functions for door release, dial-in, etc. from the telephone.

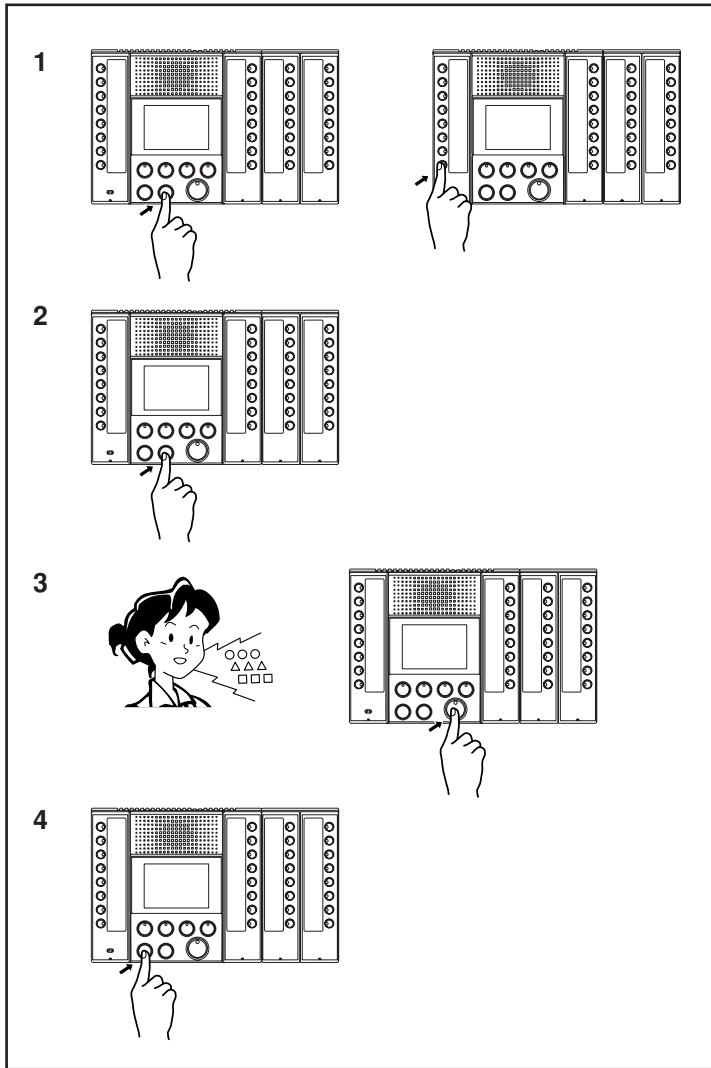
8-5



All call (normal) (master station paging)

1. When you press the ALL CALL button on the master station, all the individual master station selector button LEDs flash slowly. You can clear an undesired master station from the All Call by pressing the individual master station selector button with the flashing LED, which will turn off the LED. Pressing that button again makes that master station part of the All Call and makes the LED flash.
 2. If you press the TALK button, the send LED lights up and all the individual master station selector buttons stop flashing and stay lit. The pre-tone sounds on the target master station(s) and they can be talked to. At this time, you cannot hear audio from the other master stations.
 3. Press the OFF button to end. You can end the call for an individual master station by pressing its OFF button.
- NOTES: 1. All Call announcement does not go to master stations that are being used.
2. During an All Call, if you press the individual master station selector button on the calling master station or press the individual master station selector button or TALK button on one of the other master stations, communications switch to hands-free between master stations.
 3. There is no function for handsfree reply from a called master station during All Call mode.
 4. If you press down the ALL CALL button but do not start talking within 30 seconds, the system goes back to standby mode. You can also return to standby by pressing the OFF button.

8-6



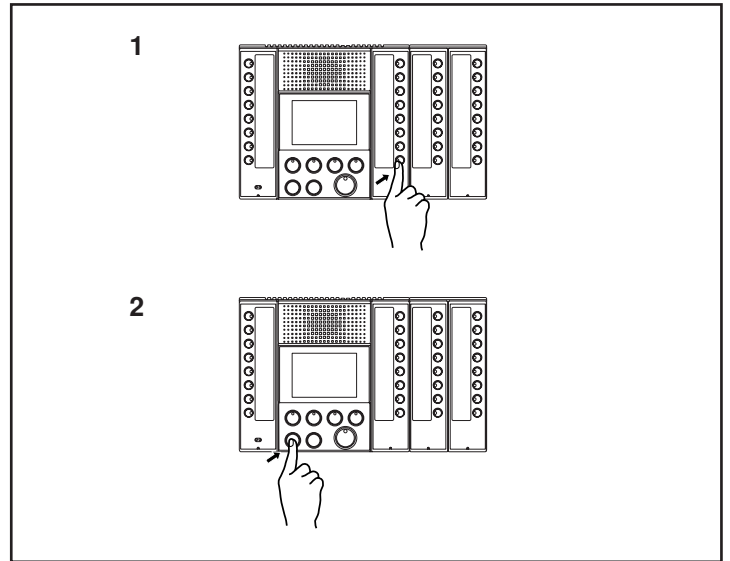
All call (priority) (master station paging)

1. When you press the ALL CALL button on the master station, all the individual master station selector button LEDs flash slowly.
2. If you press the ALL CALL button again, the flashing speeds up again. You can clear an undesired master station from the All Call by pressing the individual master station selector button with the LED flashing. The LED goes out. Pressing that button again makes that master station part of the All Call again and makes the LED flash.
3. If you press the TALK button, the TALK LED lights up and all the individual master station selector buttons stop flashing and stay lit. The pre-tone (bong) sounds on all the master stations and all can be called. At this time, you cannot hear audio from the other master stations.
4. Press the OFF button to end. You can end the call for an individual master station by pressing its OFF button.

NOTES: 1. The communication of the master station being used is cancelled and the All Call takes priority. Before the communication of the master station being used is cancelled, you hear a cancel warning sound (beep-beep-beep).

2. During an All Call, if you press the individual master station selector button on the calling master station or press the individual master station selector button or TALK button on one of the other master stations, communications switch to hands-free between master stations.
3. There is no function for talk back from a called master station.
4. If you press down the ALL CALL button but do not start talking within 30 seconds, the system goes back to standby. You can also return to standby by pressing the OFF button.

8-7



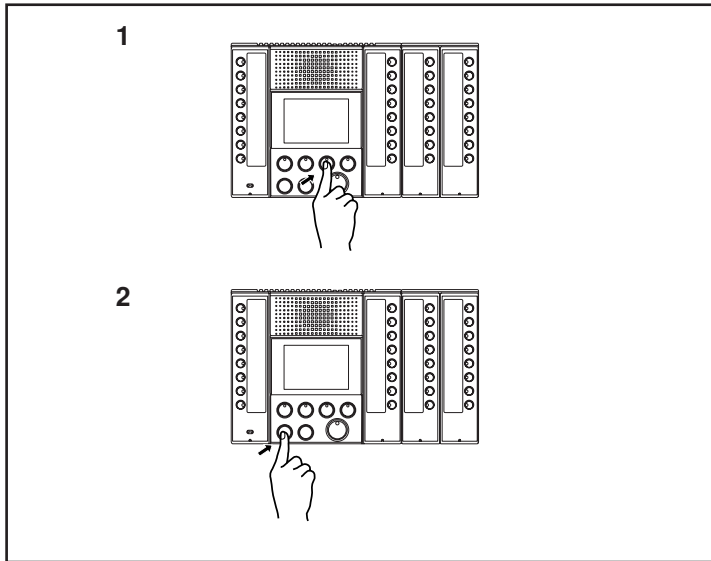
Monitor

1. If you press an individual door station selector button, you can hear the audio and if that door station has a camera, you can see the image.
2. Press the OFF button to end. The call also ends automatically when the set talk end time is reached.

NOTES: 1. While the door station is communicating with or monitored by other master station, you cannot monitor the door station.
2. If you press the TALK button while monitoring, hands-free communication mode starts with that door station.

Door station status	Monitor
Standby	Available
Communicating with telephone	Not available (sounds Pi-Pi-Pi)
Communicating with maser station	Not available (sounds Pi-Pi-Pi)
Monitoring	Not available (sounds Pi-Pi-Pi)
Calling	Communication established

8-8



Scan monitor

- When the scan monitor button is pressed, the setting door stations can be monitored sequentially each set time interval.
 - Normally, monitoring is in order from the target door station with the lowest number.
 - If you press the scan monitor button while individually monitoring a target door station, monitoring starts with next to that door station.
 - If you press the scan monitor button while monitoring a non-target door station, monitoring starts in the usual order.
- Press the OFF button to end.

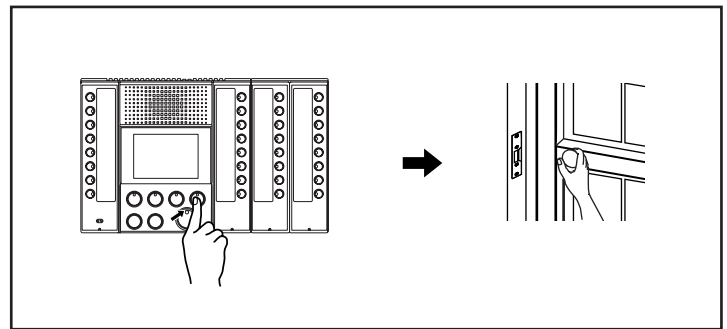
⚠ 1. When the camera is switched, the image may be distorted.

⚠ 2. Communication/video channel 2 is always used for scan monitoring. Scan monitoring is not possible when communication/video channel 2 is being used even if the Busy LED is not lit up.

- NOTES:
- Only one master station at a time can perform scan monitoring.
 - If you press the TALK button during scan monitoring, hands-free communication mode starts with that door station.
 - If you press an individual door station selector button or scan monitor button during scan monitoring, the monitoring switches to monitoring the individual door station.
 - If the master station receives a call from the door station during scan monitoring, the scan monitor function ends automatically.
 - Scan monitoring continues without limit until it is cancelled, but the master station LCD monitor goes out after 10 minutes (although the outside video output continues even with the LCD off). If you press the scan monitor button with the LCD off, the LCD lights up again.
 - During scan monitoring, the video signal is always outputted from video output port 2 (V2).
 - If you press the TALK button during scan monitoring, communication mode starts with the door station being monitored.

Door station status	Scan monitor
Standby	Available
Communicating with telephone	Available: The communication continues as is and audio monitoring is not available.
Communicating with master station	Available: The communication continues as is and audio monitoring is not available.
Monitoring	Available: The communication continues as is and audio monitoring is not available.
Calling	Not available: The door station is skipped and the next door station is scanned.

8-9



Activating door release

- Press the door release button during communication or monitoring with door station.
- The door release function will be activated, and releasing the door lock.

NOTES: 1. You cannot operate the door from an outside telephone.

2. The LED stays lit while the door release function.

8-10

Priority

- The "earlier call" has priority over the "later call".
- "Communication" takes priority over "calling" and "calling" takes priority over "monitoring and scan monitoring".
- For a "call" or "All Call", those with a call level of "priority" take priority over those with a call level of "normal".

Communication priority	
1 (High)	Door station - telephone line communication
2	All call (priority)
3	Door station to master station communication
4	Master to master communication
5	All call (normal)
6	Monitor
7 (Low)	Scan monitor

8-11

List of function button operations for each own master station mode

- Each operation is carried out when the audio channel is empty.
- Even when a sub-station call only uses the video channel, the audio channel is also treated as filled. (The audio and video channels form a pair.)

Current status (own master station)	New event (button operation on that master station)						
	Operation button						
	Privacy	CO Transfer	Scan Monitor	Lock	TALK	ALL CALL	OFF
Master station all call (priority) Making call	Microphone mute (while held down)	Outside line setting On/Off	All call end Scan monitor	Disabled	Hold down for one second for PTT communication	Disabled	Communication end, standby
Master station all call (priority) Receiving call	Disabled	Outside line setting On/Off	End of communication Scan monitor	Disabled	All call end Master-master communic	Disabled	Communication end, standby
Master station all call (priority) Selecting	Privacy setting On/Off	Outside line setting On/Off	Scan monitor	Disabled	All call start	Priority → Normal all call select	Selection end, standby
Sub-station master station communication underway	Microphone mute (while held down)	Outside line setting On/Off	End of communication Scan monitor	Door release	Hold down for one second for PTT communication	End of communication All call normal select	Communication end, standby
Sub-station call (priority) being called	Privacy setting On/Off	Outside line setting On/Off	Scan monitor	Disabled	Communication	All call normal select	Calling tone pause
Sub-station call (normal) being called	Privacy setting On/Off	Outside line setting On/Off	Scan monitor	Disabled	Communication	All call normal select	Calling tone pause
Master master communication underway	Microphone mute (while held down)	Outside line setting On/Off	End of communication Scan monitor	Disabled	Hold down for one second for PTT communication	End of communication All call normal select	Communication end, standby
Master station all call (normal) Making call	Microphone mute (while held down)	Outside line setting On/Off	All call end Scan monitor	Disabled	Hold down for one second for PTT communication	Disabled	Communication end, standby
Master station all call (normal) Receiving call	Disabled	Outside line setting On/Off	End of communication Scan monitor	Disabled	All call end Master-master communic	Disabled	Communication end, standby
Master station all call (normal) Selecting	Privacy setting On/Off	Outside line setting On/Off	Scan monitor	Disabled	All call start	Normal → Priority all call select	End, standby
Monitoring	Privacy setting On/Off	Outside line setting On/Off	Scan monitor	Door release	Communication	Monitor end All call normal select	Communication end, standby
Scan monitoring	Privacy setting On/Off	Outside line setting On/Off	Monitor	Disabled	Communication	Scan monitor end All call normal select	Communication end, standby
Standby	Privacy setting On/Off	Outside line setting On/Off	Scan monitor	Disabled	Disabled	All call normal select	Disabled

8-12

New called event

Current status (own master station)	New event (called operation on that master station)			
	Receive call			
	All call (priority)	All call (normal)	Sub-station call (priority)	Sub-station call (normal)
Master station all call (priority) Making call			(Current status continued) (Sub-station incoming call reception)	(Current status continued) (Sub-station incoming call reception)
Master station all call (priority) Receiving call			(Current status continued) (Sub-station incoming call reception)	(Current status continued) (Sub-station incoming call reception)
Master station all call (priority) Selecting	Select end All call incoming	Select end All call incoming	Select end Sub-station called (priority)	Select end Sub-station called (normal)
Sub-station master station communication underway	End of communication All call incoming	Not possible	(Current status continued) (Sub-station incoming call reception)	(Current status continued) (Sub-station incoming call reception)
Sub-station call (priority) being called	All call incoming (Sub-station incoming call hold)	All call incoming (Sub-station incoming call hold)	(Current status continued) (Sub-station incoming call reception)	(Current status continued) (Sub-station incoming call reception)
Sub-station call (normal) being called	All call incoming (Sub-station incoming call hold)	All call incoming (Sub-station incoming call hold)	Sub-station called (priority) (Sub-station incoming call hold)	(Current status continued) (Sub-station incoming call reception)
Master master communication underway	End of communication All call incoming	Not possible	(Current status continued) (Sub-station incoming call reception)	(Current status continued) (Sub-station incoming call reception)
Master station all call (normal) Making call	All call end All call incoming		(Current status continued) (Sub-station incoming call reception)	(Current status continued) (Sub-station incoming call reception)
Master station all call (normal) Receiving call	All call end All call incoming		(Current status continued) (Sub-station incoming call reception)	(Current status continued) (Sub-station incoming call reception)
Master station all call (normal) Selecting	Select end All call incoming	Select end All call incoming	Select end Sub-station called (priority)	Select end Sub-station called (normal)
Monitoring	Monitor end All call incoming	Monitor end All call incoming	Monitor end Sub-station called (priority)	Monitor end Sub-station called (normal)
Scan monitoring	Scan monitor end All call incoming	Scan monitor end All call incoming	Scan monitor end Sub-station called (priority)	Scan monitor end Sub-station called (normal)
Standby	All call incoming	All call incoming	Sub-station called (priority)	Sub-station called (normal)