



Generic photo only (actual product may change depending on configuration)

#### Mechanical Interlocks and wiring kits for reversing Contactors

- Mechanical interlocks prevent dual operation of two contactors when mounted side by side
- Electrical interlocks achieved by installation of interlock unit.

Part No.	Description
AR-12M	Mechanical Interlock to suit GMC-6M to GMC-16M Contactor units
AR-180	Mechanical Interlock Unit to suit MC-180A to MC-400A Contactor units
AR-600	Mechanical Interlock Unit to suit MC-500A to MC-800A Contactor units
UR-02	Mechanical Interlock Unit to suit MC-9B to MC-150A Contactor units
UW-22	Wiring Kits for Reversing Contactors to suit MC-9B to MC-22B
UW-32	Wiring Kits for Reversing Contactors to suit MC-32A to MC-40A
UW-63	Wiring Kits for Reversing Contactors to suit MC-50A to MC-65A
UW-95	Wiring Kits for Reversing contactors to suit MC-75A to MC-100A

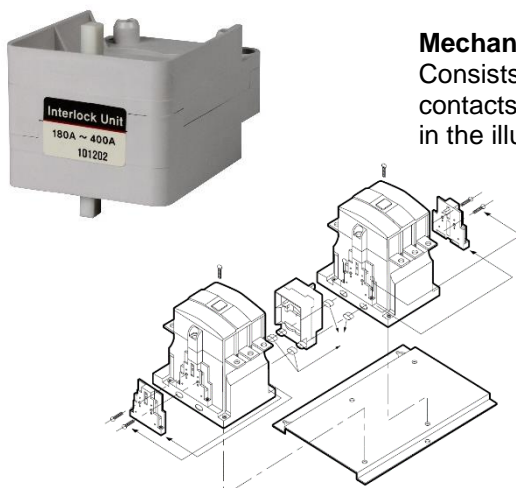
#### AR-12M



#### Mechanical Interlock Unit for GMC Contactors

Consists of mechanical interlock components and cable kits for line and load side. Illustration (on the left) shows how the kits is to be installed.

#### AR-180 and AR-600



#### Mechanical Interlock Unit

Consists of interlocking unit for electrical interlocking, Auxiliary contacts on the sides of the contactor is used to connect as shown in the illustration.

Catalogue number: **AR-□□□, UW-□□, UR-02**

Mechanical Interlocks and Wiring kits for reversing Contactor



## UR-02



### Mechanical Interlock Unit

UR-02 provides 2NC contacts for use in electrical interlocking.

## UW-22 to UW-95



### Wiring Kits for electrical interlocking

Wire Kits used for making reversing circuit between two contactors. Illustration shown below.

## Installation of Interlocks and Wire Kits

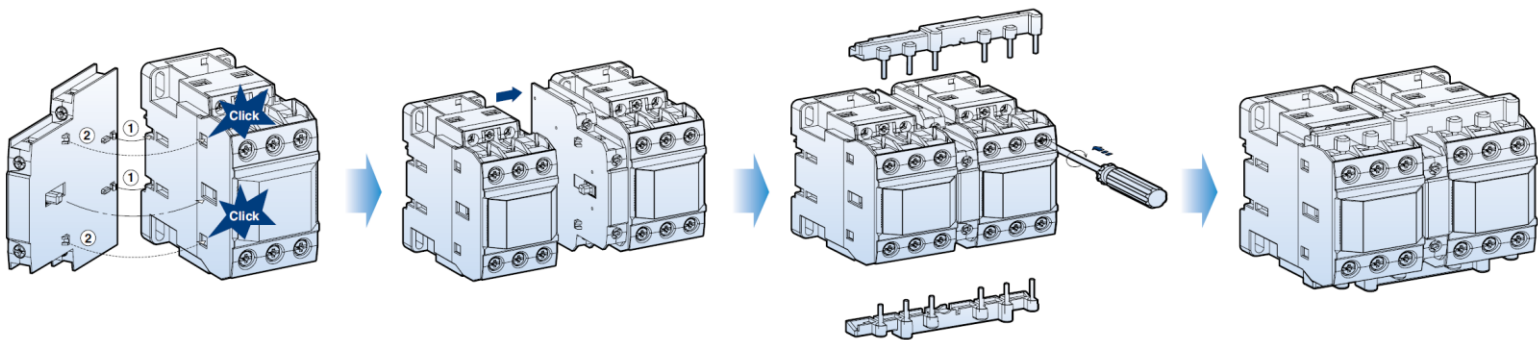


Figure 1 Illustration to show the installation of the interlock unit and wire kits