

Catalogue number: **AU-□□□□, UA-□□□□**

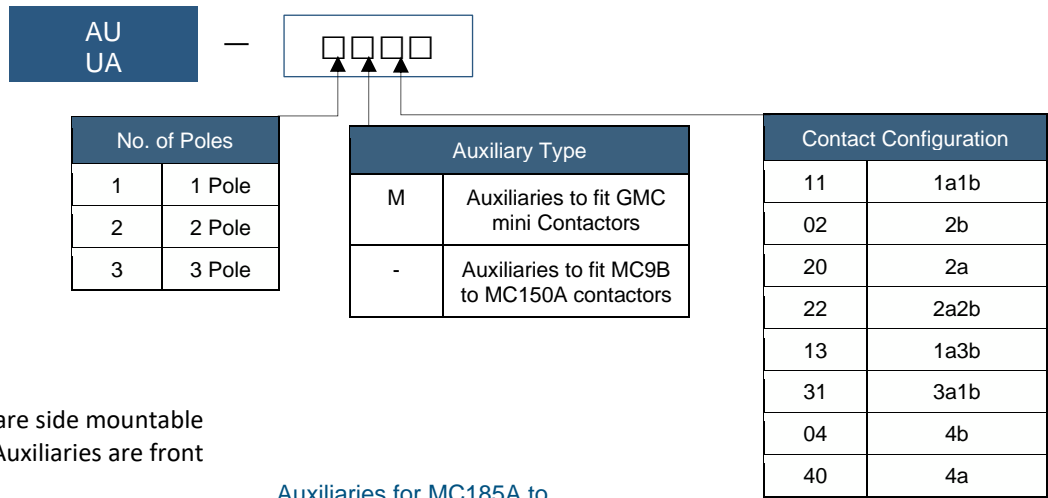
Contactor Auxiliaries: 1,2,4 Pole Front and Side mount



GMC and MC Contactor Auxiliaries

- 1, 2 and 4 pole
- Side and front mountable auxiliary options
- Auxiliaries for MC contactors and GMC mini contactor.
- Standards- IEC 60947-4-1 (meets the requirements for mirror contacts Annex F)

Generic photo only (actual product may change depending on configuration)

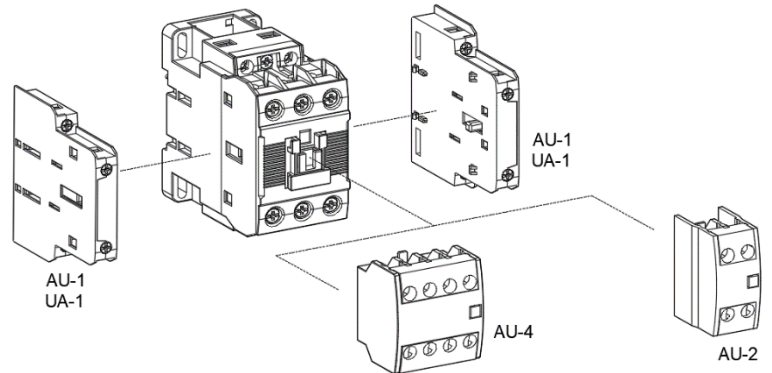
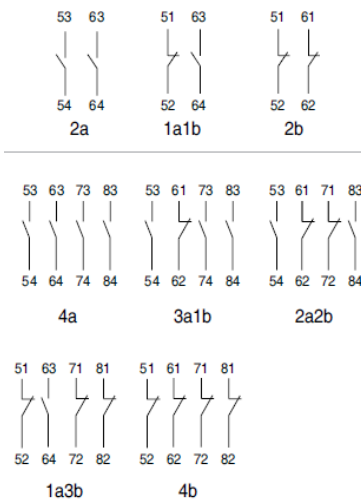


**AU-1M11 & UA-110 are side mountable Auxiliaries, all other Auxiliaries are front mounted auxiliaries.

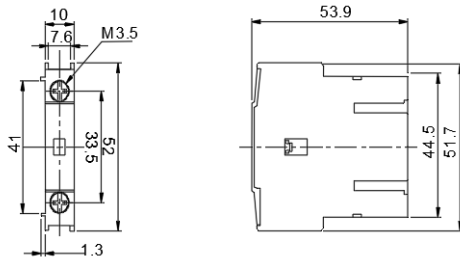
Auxiliaries for MC185A to MC800A

| Part No. | Poles | Contactor Configuration | Mounting Position |
|----------|-------|-------------------------|-------------------|
| AU-100 | 1 | 1a1b | Side |
| AU-100E | 1 | 1a1b | Side |

Contact Arrangements



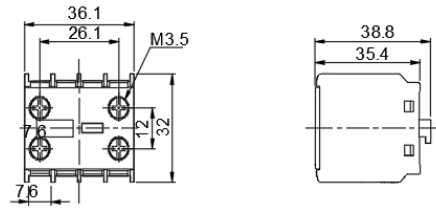
Dimensions for AU-1M Side mount Auxiliary for GMC mini contactors



TOP VIEW

SIDE VIEW

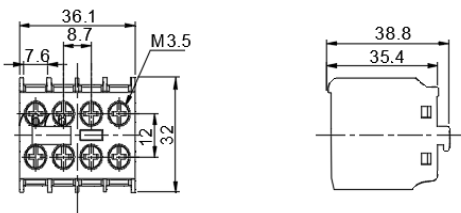
Dimensions for AU-2M Front mount Auxiliary for GMC mini contactors



TOP VIEW

SIDE VIEW

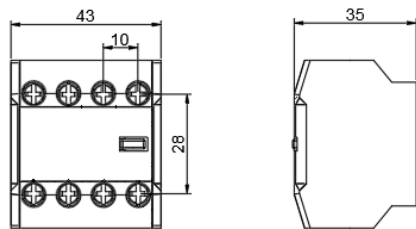
Dimensions for AU-4M Front mount Auxiliary for GMC mini contactors



TOP VIEW

SIDE VIEW

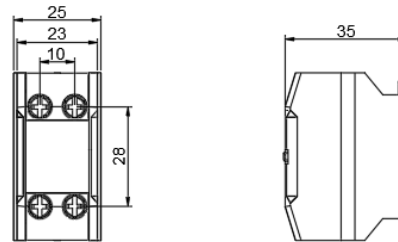
Dimensions for AU-4 front mount Auxiliary for MC9B to MC150B



TOP VIEW

SIDE VIEW

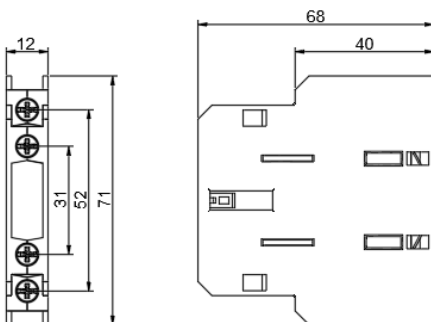
Dimensions for AU-3 front mount Auxiliary for MC9B to MC150B



TOP VIEW

SIDE VIEW

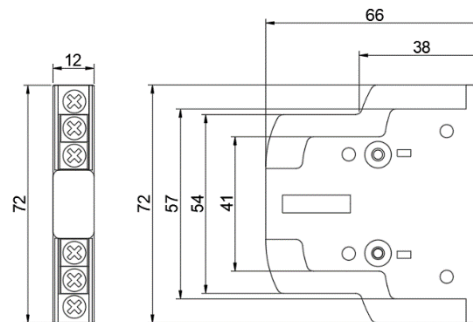
Dimensions for AU-2 front mount Auxiliary for MC9B to MC150B



TOP VIEW

SIDE VIEW

Dimensions for AU-100 and AU-100E side mount Auxiliary for MC-185A to MC-800A



TOP VIEW

SIDE VIEW