



Removable and Fixed locking devices

The locking devices enables the TS range MCCB trip unit handle to be locked in ON or OFF position. Locking in the OFF-position guarantee isolation according to IEC 60947-2.

The locking device for the toggle handle can be used in 3-pole or 4-pole breakers.

Maximum of three padlocks can be used to lock the device with a shackle dimension of 6-8 mm.

**See below table for removable and fixed locking devices

Locking Devices Part Numbers

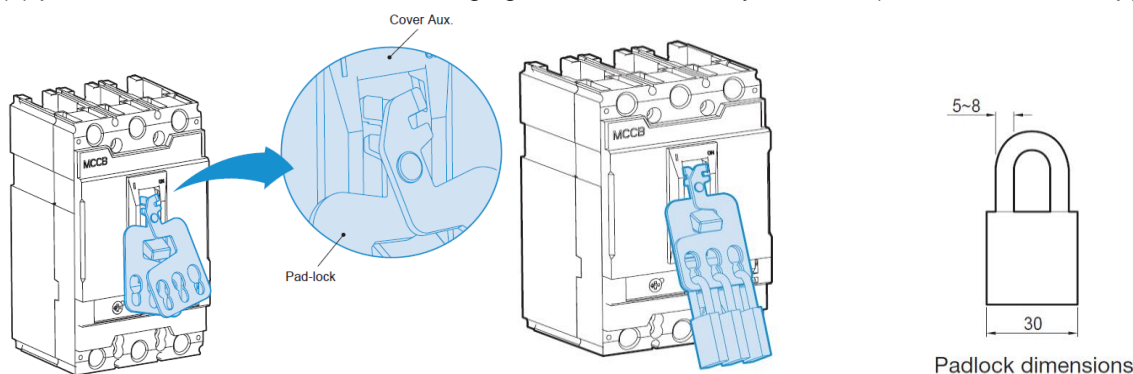
Part Number	Description	Suitable MCCB
LS-PL2-TS	Removable locking Device	TS100/160/250
LS-PL3-TS	Removable locking Device	TS400/630
LS-PL4-TS	Removable locking Device	TS800
LS-PL5-TS	Removable locking Device	TS1000/1250/1600
LS-PHL2-TS	Fixed locking Device	TS100/160/250
LS-PHL3-TS	Fixed locking Device	TS400/630
LS-PHL4-TS	Fixed locking Device	TS800
LS-PHL5-TS	Fixed locking Device	TS1000/1250/1600

Removable locking device for TS100-800

Removable locking device is available for all TS circuit-breakers. The locking device is designed to be easily attached to the circuit-breaker.

This device allows the handle to be locked in the "OFF" position. Locking in the OFF-position guarantee isolation according to IEC 60947-2.

The locking device for the toggle handle can be installed in 3-pole and 4-pole circuit-breakers. Maximum three (3) padlocks with shackle diameters ranging from 5 to 8mm may be used. (Padlocks are not supplied)



Fixed and removable locking devices

Fixed locking device for TS100-800

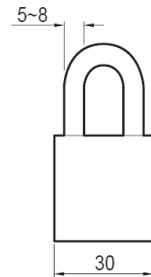
Fixed locking device is available for all TS circuit breakers. This device allows the handle to be locked in the "ON" or "OFF" position. Locking in the OFF position guarantee isolation according to IEC 60947-2.

The locking device for the toggle handle can be installed in 3-pole and 4-pole circuit-breakers. Maximum three (3) padlocks with shackle diameters ranging from 5 to 8mm may be used. (Padlocks are not supplied)

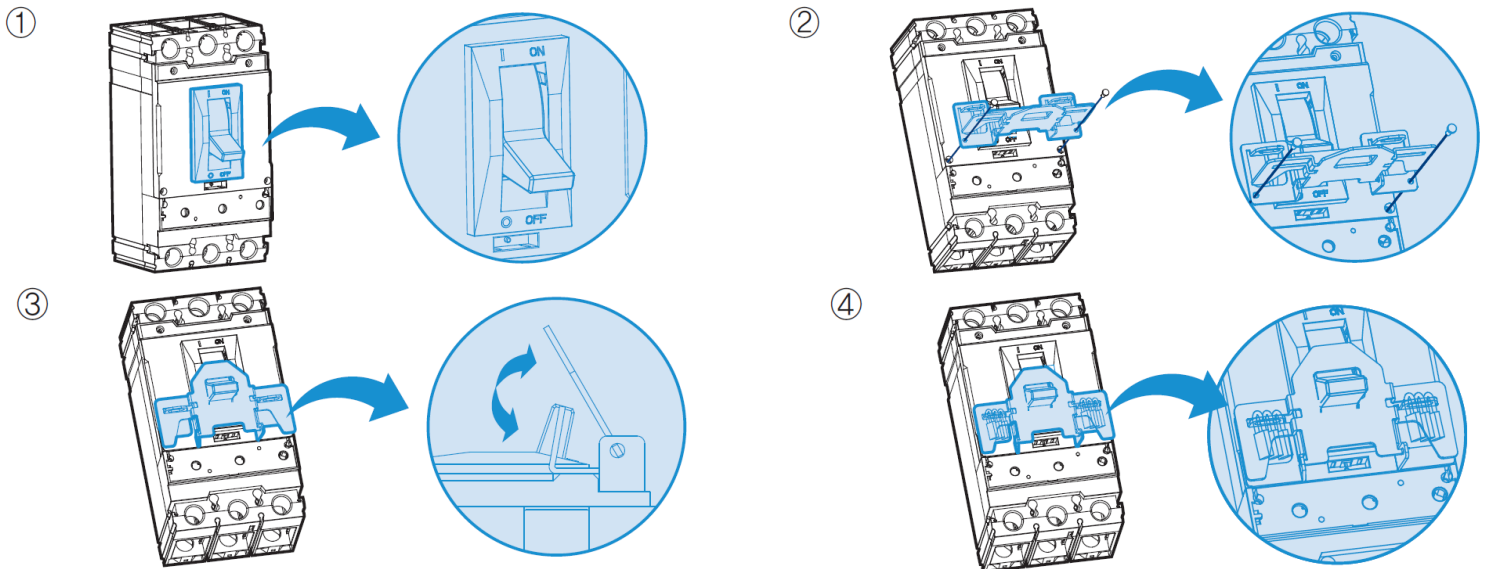
How to use

The locking device for the toggle handle is designed to be easily attached to the front of circuit-breaker.

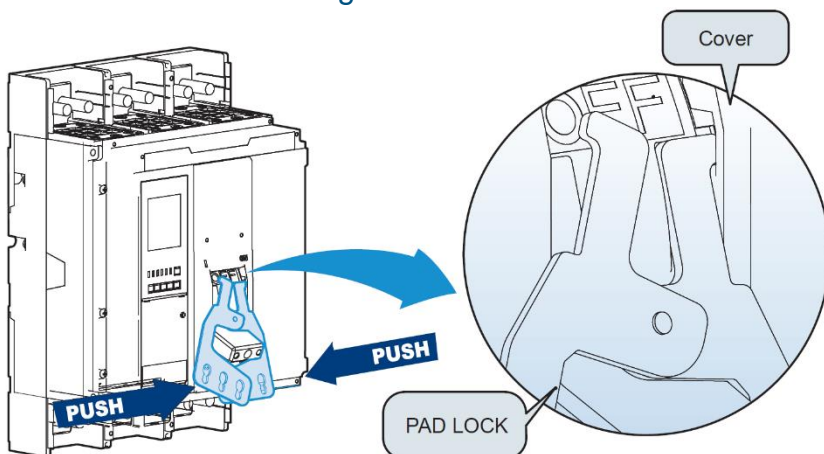
1. Please set the toggle handle in the position of "On" or "Off".
2. Install the lock device onto the front of auxiliary cover of circuit breaker.
3. Folding the wings of lock device as shown in picture 3.
4. The padlock to be used shall be that which is commercially available with the nominal dimension. (30mm nominal dimension, 5~8mm diameter)



Padlock dimensions



Removable locking device for TS1000/1250/1600



This device allows the handle to be locked in the "OFF" position. Locking in the OFF-position guarantee isolation according to IEC 60947-2.

The locking device for the toggle handle can be installed in 3-pole and 4-pole circuit-breakers. Maximum three (3) padlocks with shackle diameters ranging from 5 to 8mm may be used. (Padlocks are not supplied)

Catalogue number: **LS-PL□-TS**
LS-PHL□-TS



Fixed and removable locking devices

Removable locking device for TS1000/1250/1600

This device allows the handle to be locked in the “ON” and “OFF” position. Locking in the OFF-position guarantee isolation according to IEC 60947-2.

The locking device for the toggle handle can be installed in 3-pole and 4-pole circuit breakers. Maximum three (3) padlocks with shackle diameters ranging from 5 to 8mm may be used. (Padlocks are not supplied)

