

Catalogue number: **AC-□□□□**

Auxiliary Power Factor Correction Capacitor Contactors



Auxiliary Power Factor Correction Capacitor Contactors

- Connects to the terminal of the LS MC contactors
- Reduces high inrush currents
- No heat loss by the serial resistor
- Eliminates switching surge
- Standards; IEC 60947-5-1, UL, and CSA

Photo- MC-75A with AC-50 fitted
Generic photo only (actual product may change depending on configuration)

Part No.	Description	Suitable Contactor
AC-9	Capacitor unit to suit MC Contactors	MC-12B to MC-40A
AC-50	Capacitor unit to suit MC Contactors	MC-50A to MC-65A
AC-75	Capacitor unit to suit MC Contactors	MC-75A to MC-745A

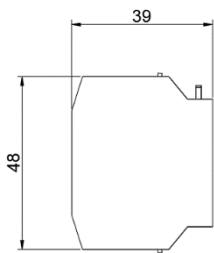
Ratings for AC-9, 50, 75

Type		AC-9(1b)	AC-50(1b)	AC-75(1b)	
Rating thermal Current		16A	16A	16A	
Current / A	AC-15	Rated operational Current (A)	120V	6	6
			240V	3	3
			380V	1.9	1.9
			480V	1.5	1.5
			500V	1.4	1.4
			600V	1.2	1.2
	DC-13	Rated Operational Current (A)	125V	0.55	0.55
			250V	0.27	0.27
			400V	0.15	0.15
			500V	0.13	0.13
600V	0.1	0.1			

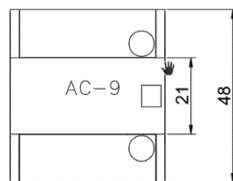
Ratings for AC-9, 50, 75 with MC Contactor

Auxiliary Part No.	Suitable Contactor	Rating (Kvar, A)				
		220-240V	400-440V	500-550V	600-690V	
AC-9	MC-12B	18A	18A	21A	17A	
		6.7KVar	12.5KVar	18KVar	18KVar	
	MC-18B	22A	24A	28A	25A	
		8.5KVar	16.7KVar	24KVar	26KVar	
	MC-22B	26A	26A	30A	29A	
		10KVar	18KVar	26KVar	30KVar	
	MC-32A	39A	36A	42A	38A	
		15KVar	25KVar	36KVar	40KVar	
	MC-40A	52A	48A	55A	51A	
		20KVar	33.3KVar	48KVar	53KVar	
	AC-50	MC-50A	52A	58A	67A	63A
			20KVar	40KVar	58KVar	65KVar
MC-65A		66A	66A	76A	70A	
		25KVar	45.7KVar	66KVar	73KVar	
AC-75	MC-75A	78A	78A	90A	82A	
		29.7KVar	54KVar	78KVar	85KVar	
	MC-85A	92A	87A	106A	96A	
		35KVar	60KVar	92KVar	100KVar	
	MC-100A	97A	89A	109A	101A	
		37KVar	62KVar	94KVar	105KVar	

Dimensions for AC-9/50/75



TOP VIEW



SIDE VIEW

