

C SERIES HAND CRANK REELS

APPLICATION

Simple, heavy duty hand crank models for a wide range of applications.

HOSE TYPE Supplied without hose

MEDIA As per your hose type

CONSTRUCTION MATERIALS Carbon Steel
304 Stainless Steel
316 Stainless Steel
Aluminium

FINISH Powdercoated
Galvanized

OPTIONAL EXTRAS 4 way roller guides
Gear guard
Friction brake
Extra heavy duty wrap spreaders
Wall mount swivel bracket



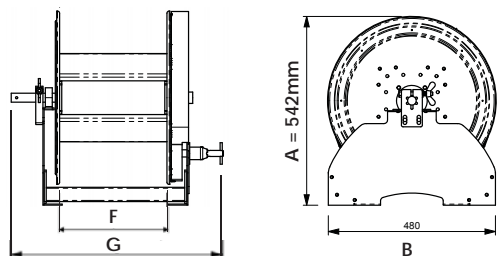
Standard construction material is carbon steel.

FEATURES



DIMENSIONS

C Series
6 Hose ID (mm)
480 Flange width (B)
150 Wrap width (F)



Detailed dimensional drawings available on request.
Quote drawing number ST11093-A.1

C SERIES HAND CRANK

Model	Hose ID (mm)	Hose Capacity (m)	Max PSI	Overall Width (G)
C6480150	6	60	5000	505
C6480300	6	140	5000	655
C6480450	6	240	5000	805
C6480600	6	300	5000	955
C10480150	10	40	5000	505
C10480300	10	100	5000	655
C10480450	10	145	5000	805
C10480600	10	200	5000	955
C12480150	12	30	5000	505
C12480300	12	60	5000	655
C12480450	12	100	5000	805
C12480600	12	130	5000	955
C19480150	19	15	5000	505
C19480300	19	30	5000	655
C19480450	19	40	5000	805
C19480600	19	60	5000	955
C25480300	25	20	3000	655
C25480450	25	30	3000	805
C25480600	25	45	3000	955
C38640350	32 - 38	20	1500	705