

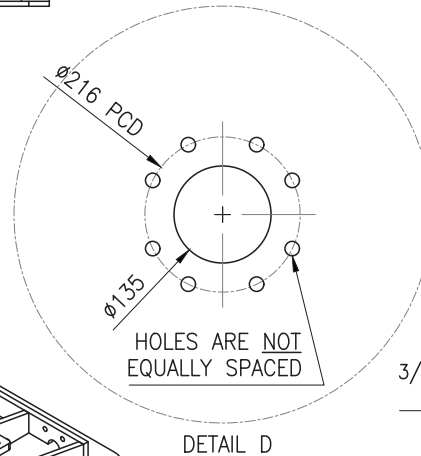
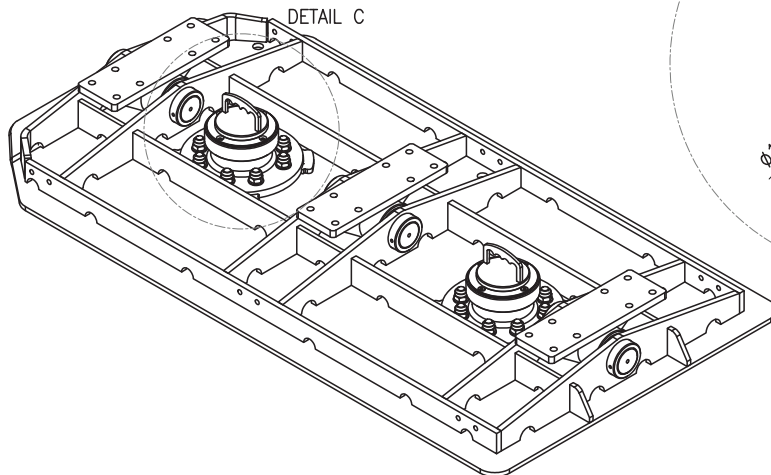
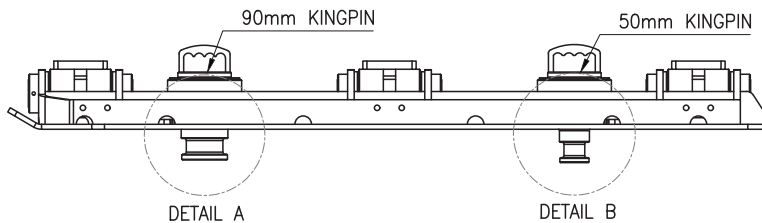
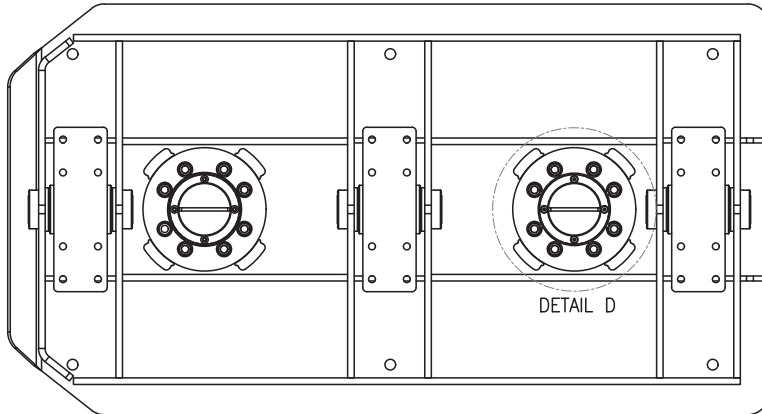


MTE DROP-IN KING PIN BOSS ASSEMBLY

P/N: 260085 & 260093

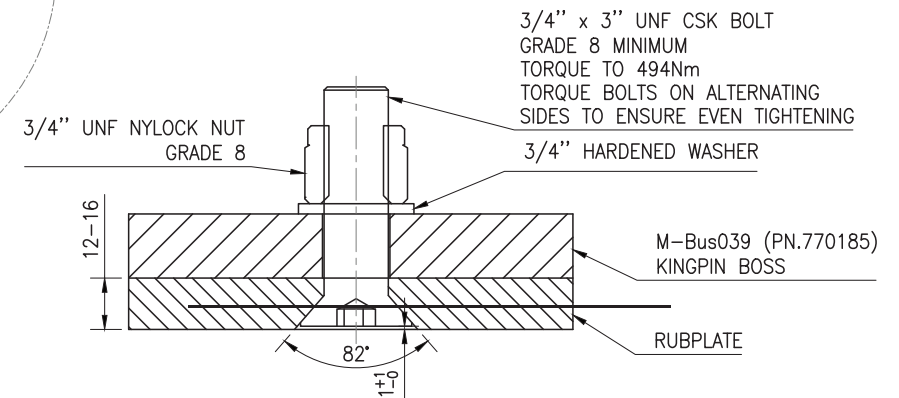
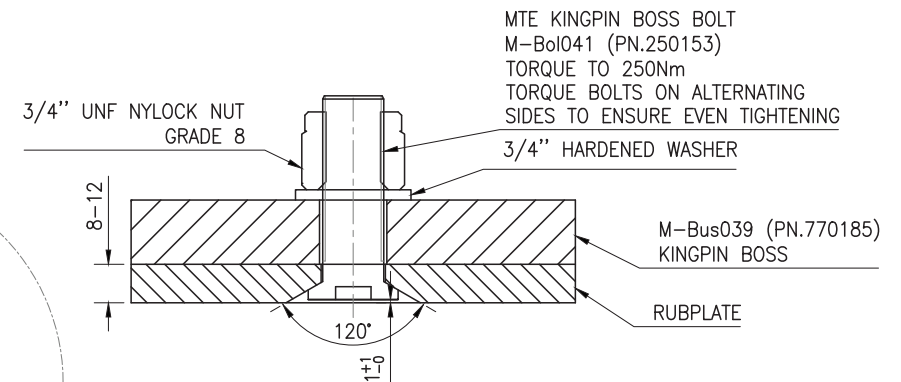
This drawing is not to be used by any third party, unless approval is obtained in writing from MODERN TRANSPORT ENGINEERS LTD.

MTE DROP-IN KING PIN
BOSS ASSEMBLY / P-Ass005 REV.5



STEP 1:
COUNTERSINK KINGPIN BOSS MOUNTING HOLES ON UNDERSIDE OF RUBPLATE TO SUIT STANDARD UNF BOLTS (82° INCLUDED ANGLE).
AS OF 2022, ALL KINGPIN BOSSES USE STANDARD 3/4" X 3" UNF COUNTERSUNK BOLTS (MINIMUM GRADE 8).
TEST FIT BOLTS BEFORE INSTALLATION TO CONFIRM COUNTERSINK ANGLE:
82° – USE 3/4" X 3" UNF CSK BOLTS (12–16mm RUBPLATES ONLY)
120° – USE M-Bol041 (PN.250153) (8–12mm RUBPLATES ONLY)
ENSURE SCREW HEAD IS RECESSED 1–2mm INTO RUBPLATE SURFACE.
ENSURE HOLE DIAMETER IS NOT INCREASED BY COUNTERSINK.

PRE-2021	2021-2024	POST-2024
M-Bol041	CHECK COUNTERSINK	STANDARD 3/4" UNF





MTE DROP-IN KING PIN BOSS ASSEMBLY

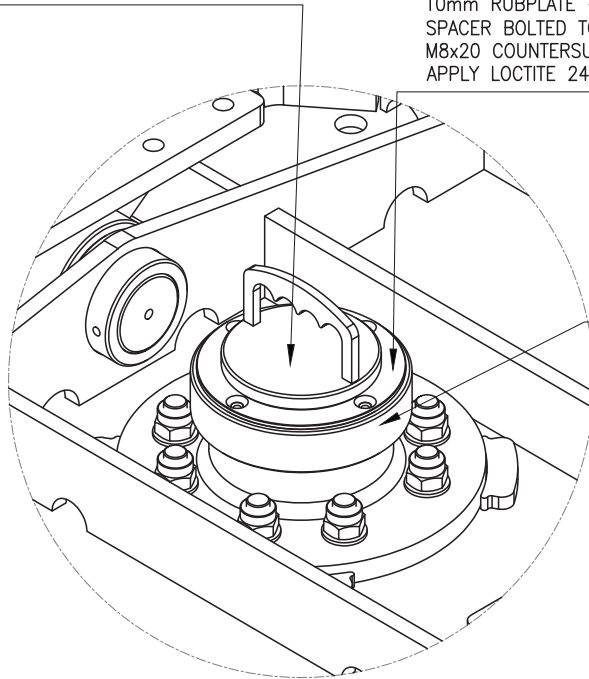
P/N: 260085 & 260093

This drawing is not to be used by any third party, unless approval is obtained in writing from MODERN TRANSPORT ENGINEERS LTD.

MTE DROP-IN KING PIN
BOSS ASSEMBLY / P-Ass005 REV.5

50mm KINGPIN M-Pin026 (250150)
90mm KINGPIN M-Pin029 (250151)

16mm RUBPLATE – NO SPACER
12mm RUBPLATE – USE M-Was085 (260085)
10mm RUBPLATE – USE M-Was093 (260093)
SPACER BOLTED TO TOP OF BOSS USING
M8x20 COUNTERSUNK BOLTS (140808)
APPLY LOCTITE 243 & TORQUE TO 25–28 Nm



DROP IN KINGPIN BOSS
DN: M-Bus039
PN: 770185

DETAIL C

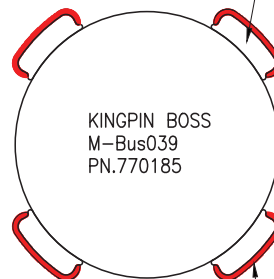
STEP 2:
TEMPORARILY BOLT KINGPIN BOSS TO RUBPLATE
USING 4 BOLTS EQUALLY SPACED.

STEP 3:
FIT 4 KINGPIN BOSS RETAINERS (C-Ret012,
PN.152153) TO ACT AS SHEAR STOPS FOR KINGPIN
BOSS. **RETAINER MUST CONTACT KINGPIN BOSS.**
WELD TO RUBPLATE ON OUTSIDE OF RETAINERS
ONLY WITH 6mm FILLET MINIMUM.

STEP 4:
UNBOLT KINGPIN BOSS FROM RUBPLATE FOR
RUBPLATE TO BE PRIMED/PAINTED.

STEP 5: INSTALL KINGPIN BOSS WITH NEW BOLTS &
NUTS TO THE SPECIFIED TORQUE. TORQUE BOLTS
ON ALTERNATING SIDES TO ENSURE EVEN
TIGHTENING. **DO NOT** RE-USE BOLTS OR NUTS
WHEN FITTING/REPLACING KINGPIN BOSS

KINGPIN BOSS RETAINER
C-Ret012
PN.152433



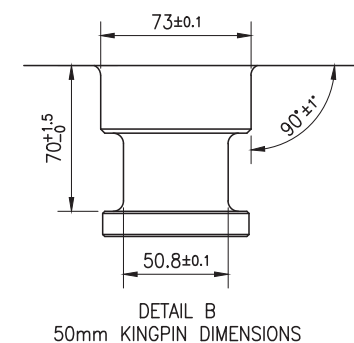
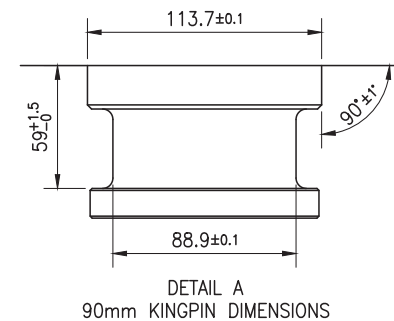
KINGPIN BOSS
M-Bus039
PN.770185

WELD OUTSIDE ONLY
6mm FILLET MINIMUM

STEP 5 CONTINUED:

CHECK KINGPIN DIMENSIONS AS PER FIGURE 2 AFTER FITTING APPROPRIATE SPACER AS PER DETAIL C.
MANUFACTURER, PART NUMBER AND SERIAL NUMBER MUST BE STAMPED INTO BASE. REQUEST NEW
KINGPIN IF THESE MARKING ARE ABSENT OR TOLERANCES ARE EXCEEDED.

STANDARD KINGPIN DIMENSIONS



KINGPIN WEAR LIMITS

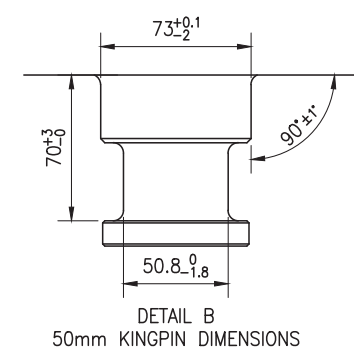
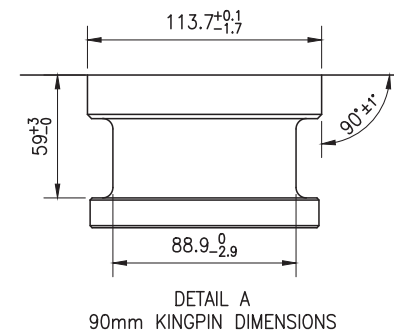


FIGURE 2 – ACCEPTABLE KINGPIN TOLERANCES