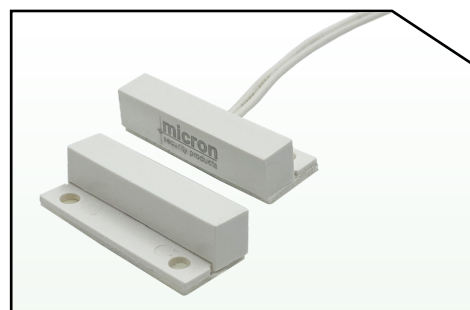


## Specification:

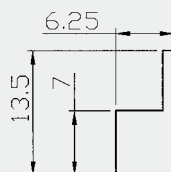
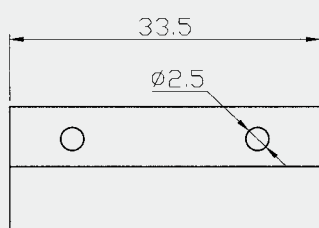
**RSS106W**

- \* Mini stick-on contact with flange
- \* Centre leads with 40 cm fly lead
- \* Adhesive and screw mount
- \* Colours: White

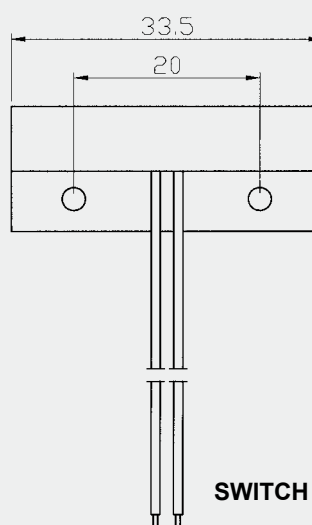
## Surface Mounted



## Dimension (mm):



**MAGNET**



**SWITCH**



## Order Information:

Part Number	Loop Type	Reed Form	Closed Gap (mm)	Maximum Initial Contact Resistance (Ohm)	Maximum Initial Contact Rating (W)	Maximum Switching Voltage (VDC/VAC)	Maximum Switching Current (A)
RSS106W	Closed	N/O	24	0.150	10	100	0.5