

TECHNICAL DATA SHEET

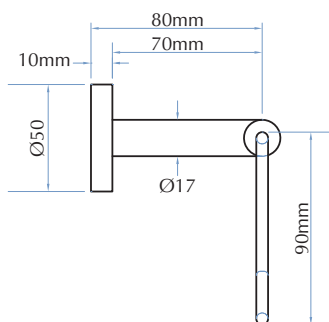
SURFACE MOUNTED TOWEL RING AND TOWEL RACK



SORRENTO TOWEL RING SR034

- Polished stainless steel

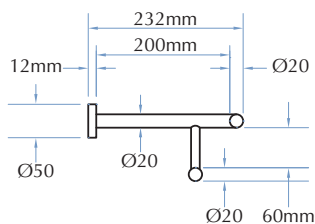
Overall Dimensions
225mm W x 88.5mm projection



SORRENTO TOWEL RACK SR10590

- Polished stainless steel

Overall Dimensions
600mm W x 232mm projection



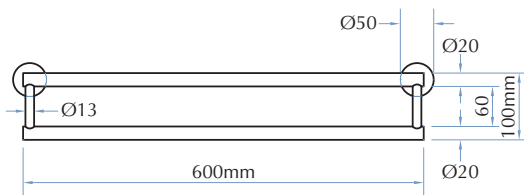
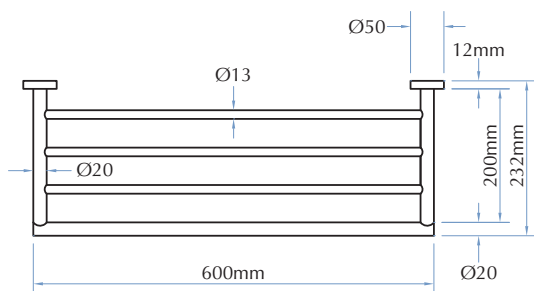
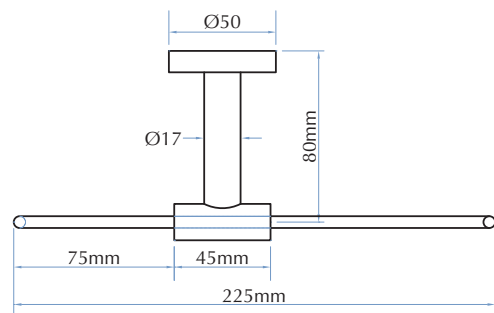
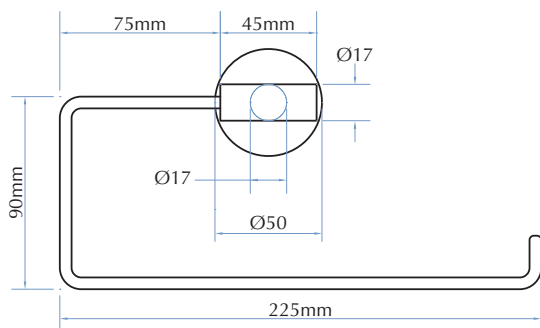
CONSTRUCTION:

Units fabricated of polished stainless steel.

INSTALLATION:

Secure to wall with mounting screws (included) at holes provided.

MODEL SR034 - Towel Ring MODEL SR10590 - Towel Rack



TOLL FREE 1300 364 561

The manufacturer reserves the right to make changes in design and material without formal notice and without incurring obligation.

Bradley
AUSTRALIA.COM