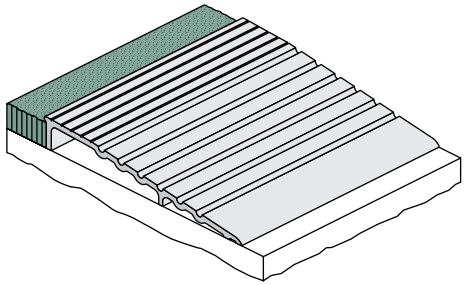
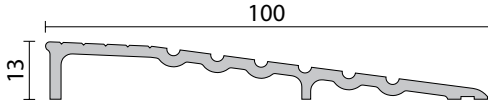


RP77



## FITTING INSTRUCTIONS

### Threshold Ramp



Category J gaskets for use with Listed steel frames and/or Classified steel covered composite, hollow metal doors rated up to 3 hrs; wood and plastic covered composite doors rated up to 1-1/2 hrs; and wood core doors rated for 20 minutes.

## DETAILS

### LOCATION

Door sill or used to provide a ramp frame for internal door mats.

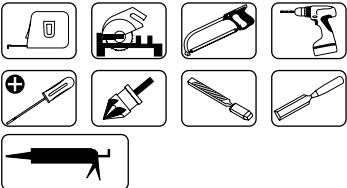
### FIXING METHOD

Zinc plated, cross recess head CSK S.T. screws of the appropriate size and colour are supplied.

### USED IN CONJUNCTION

Raven door bottom seals.

TOOLS



## DESCRIPTION

A heavy duty threshold ramp with a ribbed design which can be positioned back-to-back to form a two-way threshold ramp conforming to NCC D3D16 (b) (FIG.4) PAGE 2.

Can be used in conjunction with Raven door bottom seals to prevent rain, draughts, noise and smoke infiltration. Suitable for use with most floor pivots.

Ideal for commercial shop fronts providing a neat ramp detail between carpets or tiles at door ways.

Can also be used to provide a ramped frame for internal door mats.

Note: when ordering, specify longer length than doorway to allow for neat installation around door frame.

RAVEN PRODUCTS PTY. LTD.  
18-22 Aldershot Rd,  
Lonsdale SA 5160 Australia  
T +61 8 8384 5455  
raven.com.au

Raven Products is an  
ISO9001 QMS company  
certified by SGS

Designed and produced by  
Raven Products Pty Ltd  
(Australia)

Made in P.R.C. by Raven

Copyright: 03/25 (G)

Part No. ZSDSRP77

**NOTES**

- » If installing a door bottom seal, refer to door bottom seal instructions for correct fitting location of the threshold ramp (user determined).
- » It may be necessary to check out the threshold ramp ends to allow for the door jamb/stops. Where the threshold ramp meets the door jamb/stop, sealant may be applied (user determined).
- » If threshold ramp protrudes from doorway, it may be necessary to provide a side return to comply with ASI428.1 Part 7.5. Cut ends at 45° to create a mitre join, or a cement/grout ramp can be made (user determined) (FIG.5).

**STEP 1** Machine cut threshold ramp to required length to suit application (FIG.1 & FIG.3).  
**Note:** Use a length wider than door opening to provide a side return for a neat detail at door frame (user determined) (FIG.5).

**STEP 2** Check out threshold ramp ends to allow for door jambs/stops (user determined) (FIG.1)

**STEP 3** Drill and countersink threshold ramp to suit 8 gauge x 50mm countersink screws supplied.

**STEP 4** Position threshold ramp to suit application (FIG.1 & FIG.3).

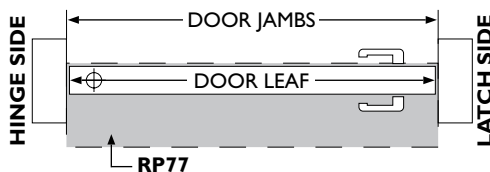
**STEP 5** Drill pilot holes to suit (drill and plug for concrete). Drive screws in firmly but do not overtighten.

Note: If screw fixing in exposed external coastal areas, substitute the supplied fixing screws with equivalent stainless steel screws.

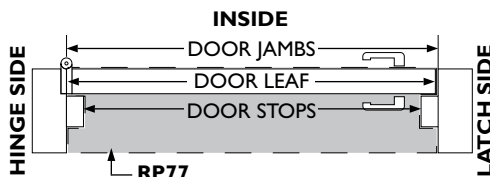
**STEP 6** Apply silicon sealant to seal at sill (by others) (FIG.2).

**PLAN VIEWS**

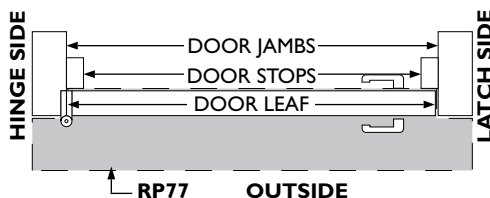
**PIVOT DOOR**



**BUTT HINGE DOOR (INWARD OPENING)**

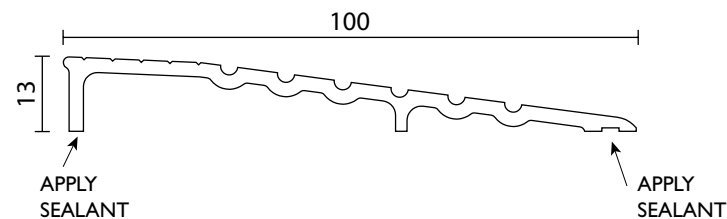
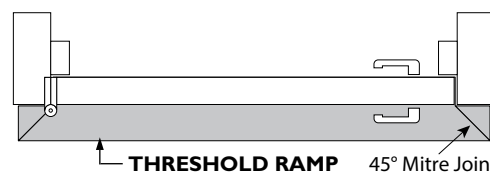


**BUTT HINGE DOOR (OUTWARD OPENING)**



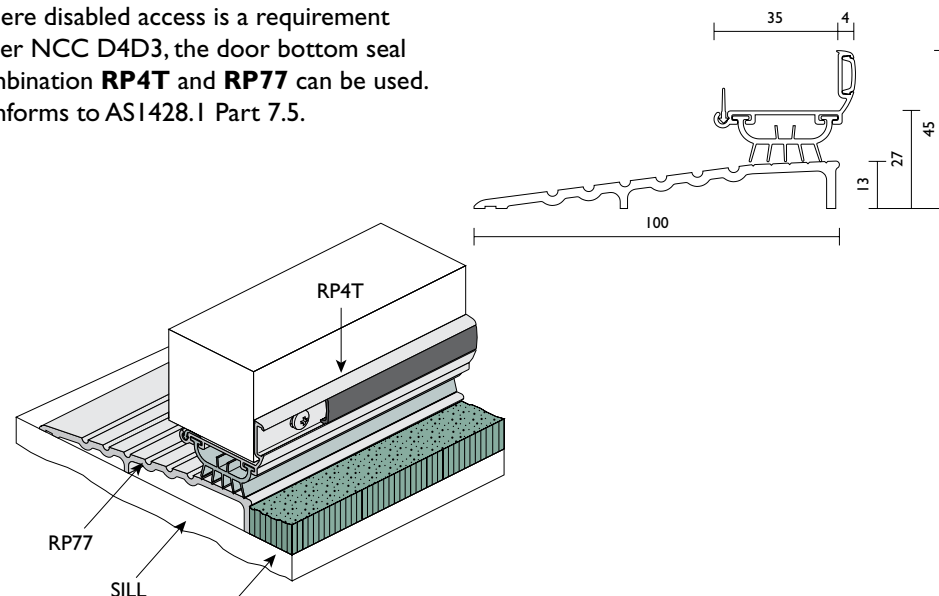
**FIG.5**

**SIDE RETURN DETAIL PLAN VIEW**



**FIG.3**

Where disabled access is a requirement under NCC D4D3, the door bottom seal combination **RP4T** and **RP77** can be used. Conforms to ASI428.1 Part 7.5.



**NOTE:** CARPET OR TILES SHOULD BE LOWER THAN HEIGHT OF RP77 TO AVOID SWEEP SEAL FOULING SURFACE.

**FIG.4**

Position back-to-back to provide a two-way threshold ramp.

