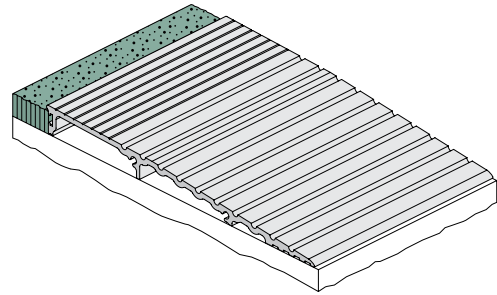
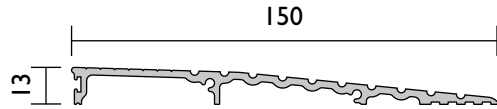


RP138



## FITTING INSTRUCTIONS

### Threshold Ramp



Category J gaskets for use with Listed steel frames and/or Classified steel covered composite, hollow metal doors rated up to 3 hrs; wood and plastic covered composite doors rated up to 1-1/2 hrs; and wood core doors rated for 20 minutes.

## DETAILS

### LOCATION

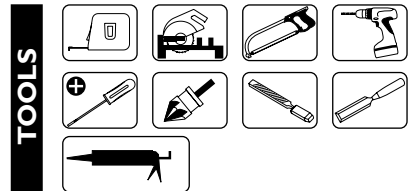
Door sill.

### FIXING METHOD

Zinc plated, cross recess head CSK S.T. screws of the appropriate size and colour are supplied, or it can be fastened with adhesive (by others).

### USED IN CONJUNCTION

Raven door bottom seals.



## DESCRIPTION

A heavy duty threshold ramp that can be used as a border for internal floor matting or be positioned back-to-back to form a two-way threshold ramp conforming to NCC D3D16 (b) (FIG.4) PAGE 2.

Ideal for larger style commercial door frames.

RP138 has been designed to accommodate a concealed screw fix through the door jambs.

Note: when ordering, specify longer length than doorway to allow for neat installation around door frame.

RAVEN PRODUCTS PTY. LTD.  
18-22 Aldershot Rd,  
Lonsdale SA 5160 Australia  
T +61 8 8384 5455  
raven.com.au

Raven Products is an  
ISO9001 QMS company  
certified by SGS

Designed and produced by  
Raven Products Pty Ltd  
(Australia)

Made in P.R.C. by Raven

Copyright: 05/24 (G)

Part No. ZSDSRPI38

**NOTES**

- » If installing a door bottom seal, refer to door bottom seal instructions for correct fitting location of the threshold ramp (user determined).
- » It may be necessary to check out the threshold ramp ends to allow for the door jamb/stops. Where the threshold ramp meets the door jamb/stop, sealant may be applied (user determined).
- » If threshold ramp protrudes from doorway, it may be necessary to provide a side return to comply with ASI428.1 Part 7.5. Cut ends at 45° to create a mitre join, or a cement/grout ramp can be made (user determined) (FIG.5)
- » Can be fixed with high strength, multipurpose polyurethane adhesive such as Sikaflex I IFC or equivalent.

**STEP 1** Machine cut threshold ramp to required length to suit application (FIG.1 & FIG.3).  
**Note:** Use a length wider than door opening to provide a side return for a neat detail at door frame (user determined) (FIG.5).

**STEP 2** Check out threshold ramp ends to allow for door jamb/stops (user determined) (FIG.1).

**SCREW FIXING**

**STEP 3** If screw fixing, drill and countersink threshold ramp to suit screws supplied.  
**For Fabricators:** Drill holes in door jambs to suit 6 gauge screws (not supplied) to locate with screw holes in threshold ramp (FIG.2).

Note: If screw fixing in exposed external coastal areas, substitute the supplied fixing screws with equivalent stainless steel screws.

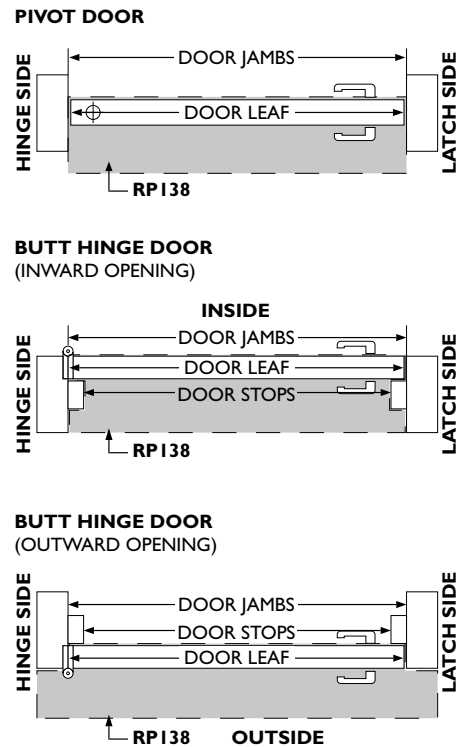
- STEP 4** Position threshold ramp to suit application (FIG.1 & FIG.3).
- STEP 5** Drill pilot holes to suit (drill and plug for concrete). Drive screws in firmly but do not overtighten.
- STEP 6** Apply silicon sealant to seal at sill (by others) (FIG.2).

**ADHESIVE FIXING**

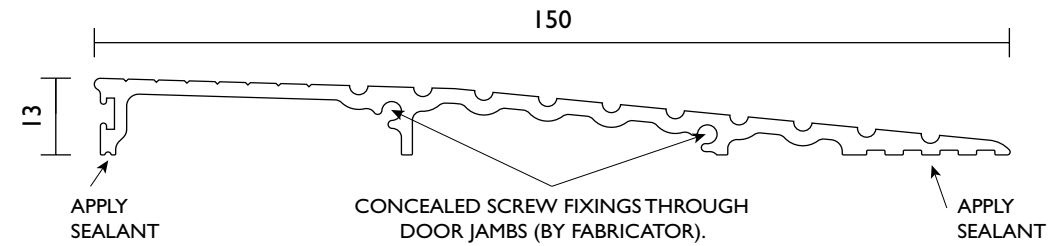
- STEP 7** If adhesive fixing, apply builders adhesive to ribbed underside of threshold ramp (refer notes) (FIG.2).
- STEP 8** Adhesive fix threshold ramp in position to suit application.

**FIG.1**

**PLAN VIEWS**

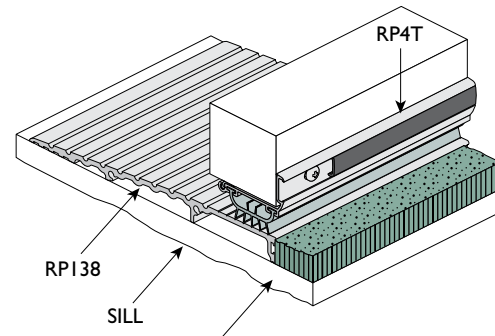
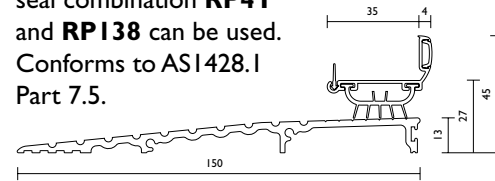


**FIG.2**



**FIG.3**

Where disabled access is a requirement under NCC D4D3, the door bottom seal combination **RP4T** and **RP138** can be used. Conforms to ASI428.1 Part 7.5.



**NOTE:** CARPET OR TILES SHOULD BE LOWER THAN HEIGHT OF RP138 TO AVOID SWEEP SEAL FOULING SURFACE.

**FIG.4**

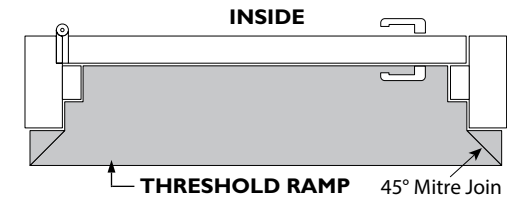
Position back-to-back to provide a two-way threshold ramp.



**FIG.5**

**SIDE RETURN DETAIL PLAN VIEW**

**BUTT HINGE DOOR (INWARD OPENING)**



**BUTT HINGE DOOR (OUTWARD OPENING)**

