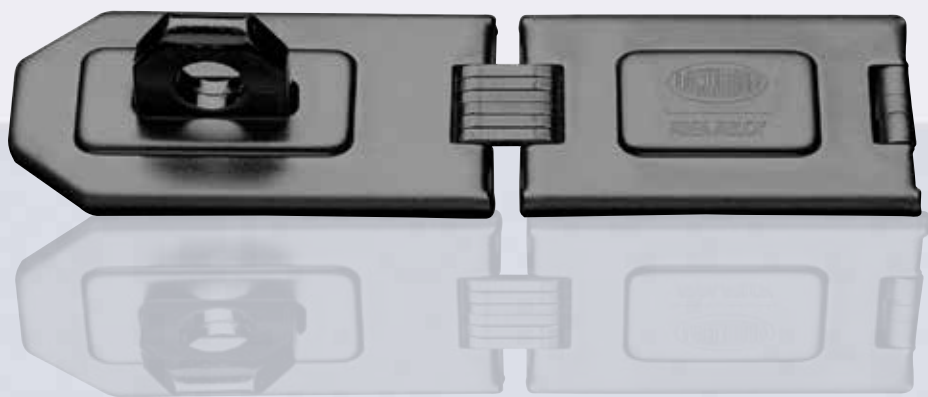


Hasp and Staples - Hinged



Lockwood Hinged Hasp and Staples are designed for general purpose security applications.

Features and Specifications

- Double hinged design for added flexibility
- High cut resistant hardened steel construction with strengthening ribs and rolled edges for added protection
- Tamper resistant concealed fixing
- All fasteners included

Security

Security Rating	6
Corrosion Rating	3

The security rating was achieved using the fasteners supplied in the pack. The use of fasteners other than those supplied may affect the security of this product.

Pack Variations

Available in display pack only.

Choosing the Right Padlock

For the best results it is recommended that a Lockwood padlock with the same security rating as the accessory is selected.

When the padlock and accessory are combined the lower of the two respective ratings will apply.

Product Details

Functions	Durable hardened steel
Materials	Corrosion resistant black coating

Standards and Compliance

SP6

Physical Security grades are employed for padlocks. These grades are defined in part by the effective differs and key combinations. Padlocks Physical Security (SP) Grade 6



SHELTERED

Corrosion Resistance Rating C3: Environments that are sometimes damp in the majority of normal rural and suburban localities, including interiors where condensation may occur.

Designed and tested to the Australian Padlock Standard AS4145.4 2002 and are rated for both security and corrosion resistance

Hasp and Staples - Hinged

Part Number	Description
PA/23/160/DP	160mm long Hinged Hasp and Staple

Product Details – Dimensions							
	A	B	C	D	E	Security Rating	Corrosion Resistance Rating
PA/23/160/DP	160	46	9	31	12.5	6	3

