

Locking Plates



Lockwood Locking Plates are designed for surface mounting and side mounting where general purpose security is required.

Features and Specifications

- High cut resistant hardened steel construction
- Bolt through fixing for added strength and security on surface mounted plates
- Tamper resistant concealed fixing on side mounted plates
- All fasteners included

Security

Security Rating 5 and 6

Corrosion Rating 3

The security rating was achieved using the fasteners supplied in the pack. The use of fasteners other than those supplied may affect the security of this product.

Pack Variations

Available in display pack only.

Choosing the Right Padlock

For the best results it is recommended that a Lockwood padlock with the same security rating as the accessory is selected.

When the padlock and accessory are combined the lower of the two respective ratings will apply.

Product Details

Functions	Durable hardened steel
Materials	Corrosion resistant black coating

Standards and Compliance

SP5/6

Physical Security grades are employed for padlocks. These grades are defined in part by the effective differs and key combinations. Padlocks Physical Security (SP) Grade 5 for PA/14/70/DP & (SP) Grade 6 for PA/13/70/DP



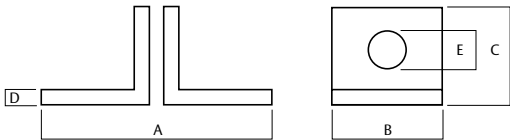
Corrosion Resistance Rating C3: Environments that are sometimes damp in the majority of normal rural and suburban localities, including interiors where condensation may occur.

Designed and tested to the Australian Padlock Standard AS4145.4 2002 and are rated for both security and corrosion resistance.

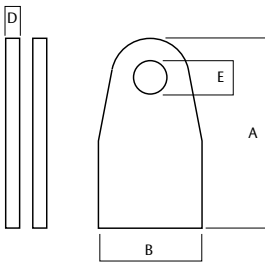
Locking Plates

Part Number	Description
PA/13/70/DP	For non-handed, surface mounted applications
PA/14/70/DP	For non-handed, side mounted applications

Product Details – Dimensions							
	A	B	C	D	E	Security Rating	Corrosion Resistance Rating
PA/13/70/DP	75	40	34	5	13	6	3
PA/14/70/DP	75	35	N/A	5	12	5	3



PA/13/70/DP



PA/14/70/DP