

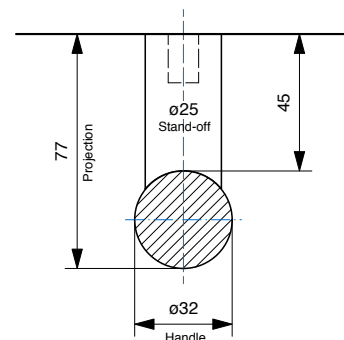
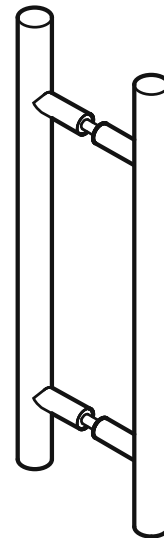


DDA Compliant - 316 Marine Grade Stainless Steel

CODE	SECTION	PROJECTION	LENGTH	CTC
BAH-134/A	Dia 25 32	70 77	400	200
BAH-134/B	Dia 25 32	70 77	500	300
BAH-134/C	Dia 25 32	70 77	600	400
BAH-134/D	Dia 25 32	70 77	700	500
BAH-134/E	Dia 25 32	70 77	800	600
BAH-134/F	Dia 25 32	70 77	900	700
BAH-134/G	Dia 25 32	70 77	1000	800
BAH-134/H	Dia 25 32	70 77	1100	900
BAH-134/I	Dia 25 32	70 77	1200	1000
BAH-134/J	Dia 25 32	70 77	1300	1100
BAH-134/K	Dia 25 32	70 77	1400	1200
BAH-134/L	Dia 25 32	70 77	1500	1300
BAH-134/M	Dia 25 32	70 77	1600	1400
BAH-134/N	Dia 25 32	70 77	1700	1500
BAH-134/O	Dia 25 32	70 77	1800	1600
BAH-134/P	Dia <b>25</b> 32	70 77	1900	1700
BAH-134/Q	Dia <b>25</b> 32	70 77	2000	1800
BAH-134/R	Dia <b>25</b> 32	70 77	2100	1900
BAH-134/S	Dia <b>25</b> 32	70 77	2200	2000
BAH-134/T	Dia <b>25</b> 32	70 77	2300	2100
BAH-134/U	Dia <b>25</b> 32	70 77	2400	2200

- Measurements in **bold** indicate handles that require intermediate fixing
- Special sizes available upon request

FINISHES	
Standard:	SSS/PSS
Options:	Powdercoat Dulux
Electroplate:	SBN ORB BN CO



### How to specify

	PRODUCT CODE	LENGTH	FINISH	FIXING	DOOR TYPE
Example:	BAH-134/A	400mm	SSS	B	GD

