

**MODEL 812-102-AT-NC-RH**

**BARIATRIC DROP DOWN GRAB RAIL  
WITH RIGHT HAND NURSE CALL BOX WITH  
SUPPORT LEG**



## PRODUCT FEATURES:

- 38mm diameter
- Satin finish stainless steel
- Surface mounted
- Locking pin locks rail in the 'UP' position
- Support leg 38mm & clip holder
- Suitable for bariatric applications
- Weight load 450kg

### Back Plate Dimensions

100mm W x 300mm H

Unit Projects 800mm

### PRODUCT DATA:

### CONSTRUCTION:

Fabricated of type 304 (18-8), 38mm (1-1/2") O.D.

18 gauge stainless steel, seamless construction with exposed surfaces in architectural satin finish. Intermediate supports are contour cut and joined by heliarc welding to form an integral part of the grab rail. All welds ground. Mandrel bending process maintains uniform rail diameter.

**STRENGTH:**

When properly mounted, all Bradley heavy duty grab rail systems meet or exceed the requirements of Australian Standard AS 1428.1

## INSTALLATION:

Secure to wall where adequate in-wall backing exists. Use rail as template to locate mounting holes. Drill holes and set anchors as appropriate. Mount grab rail and secure mounting screws. (Screws not provided.)

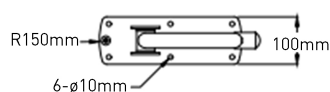
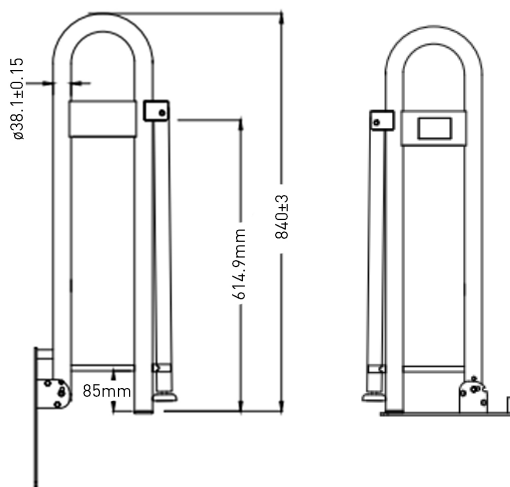
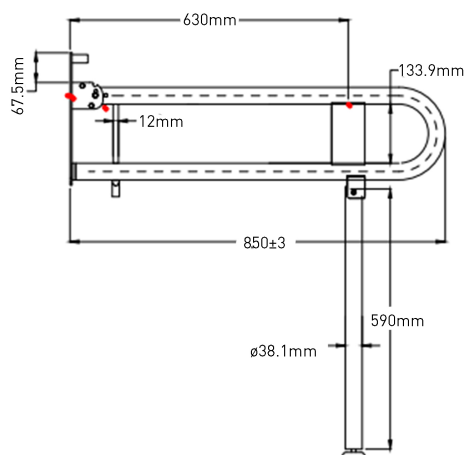
Drop down rails must be installed / fitted to a solid wall or firm surface and installed by qualified trades people.

Brickwork, blockwork, concrete or 50mm timber stud will be sufficient.

### GUIDE SPECIFICATION:

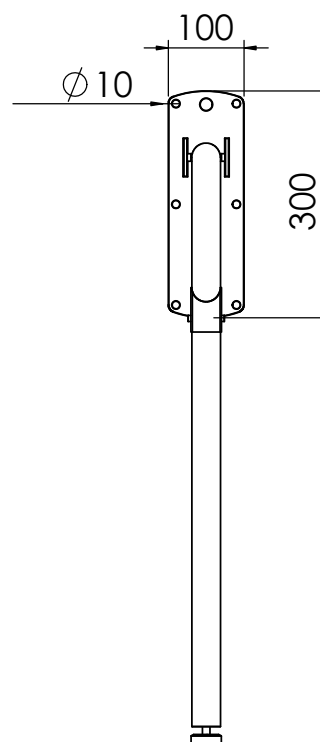
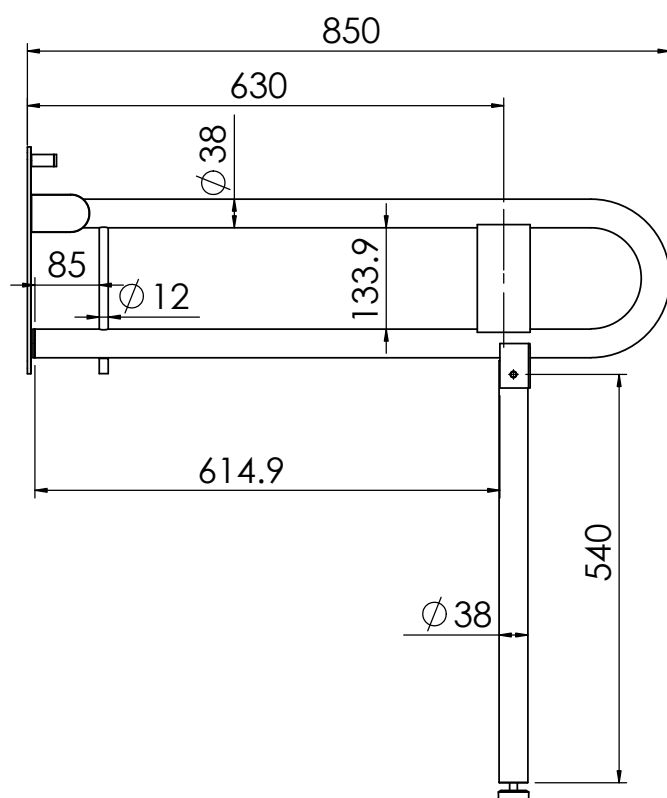
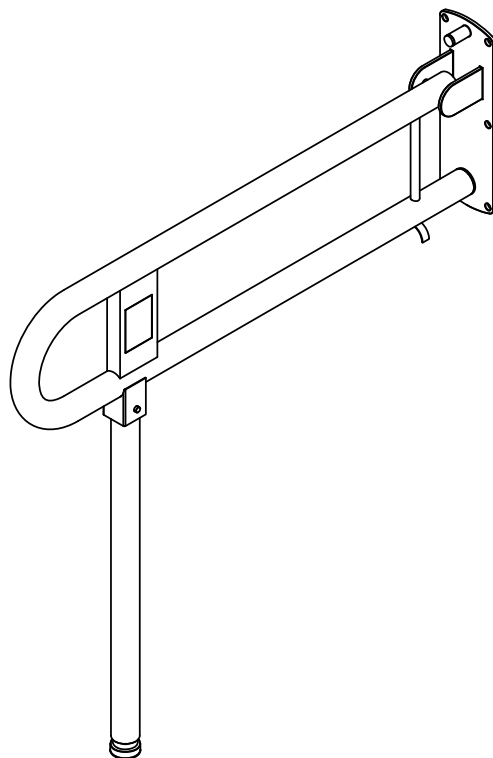
Grab rail shall be fabricated of type 304 satin finish stainless steel with concealed mounting flanges in sizes and configurations as indicated.

Please note: red dots allocate the 3 wiring holes



# 812-102-AT-NC RH

BARIATRIC DROP DOWN GRAB RAIL WITH RIGHT HAND NURSE CALL BOX WITH SUPPORT LEG



**Bradley**  
AUSTRALIA

customised excellence

DWG NO.

812-102-AT-NC RH

APPROVED BY:

Proudly customised design please approve

SCALE: 1:10