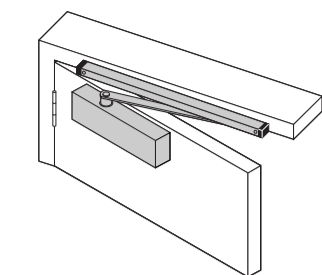


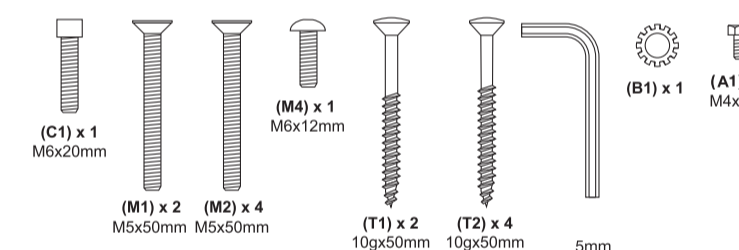
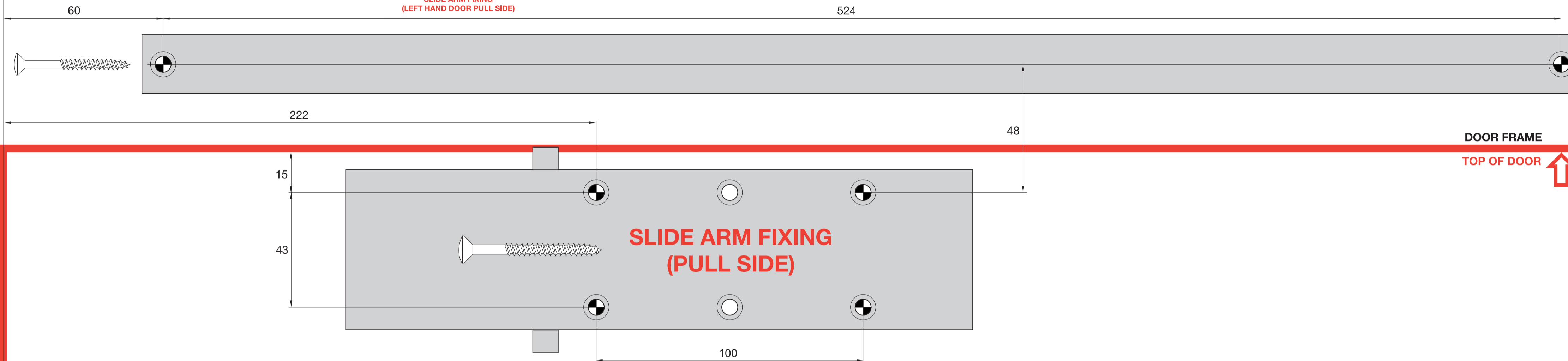


7714 SERIES SLIDE ARM DOOR CLOSER



SLIDE ARM FIXING
(LEFT HAND DOOR PULL SIDE)

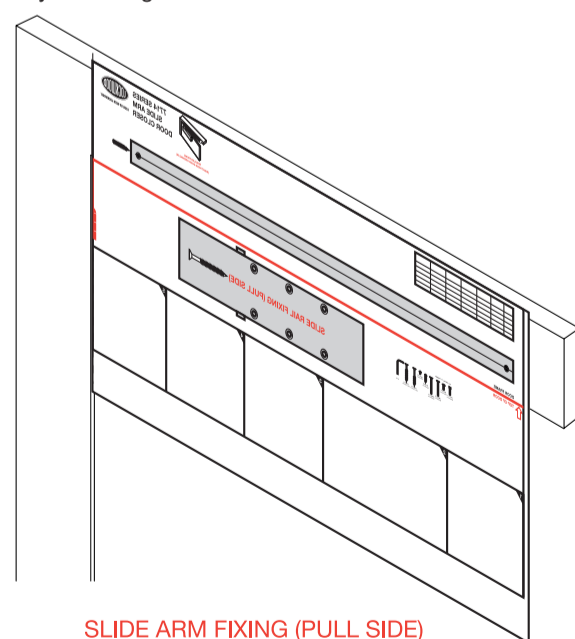
Power Size	Max. Door Width	Max. Door Weight	Max. Door Opening	Min. Closing Torque	Number Turns	Direction
EN1	750mm	20kg	175°	9Nm	8	Anti - Clockwise
EN2	850mm	40kg	175°	13Nm	-	-
EN3	950mm	60kg	175°	18Nm	7	Clockwise



M = METAL T= TIMBER

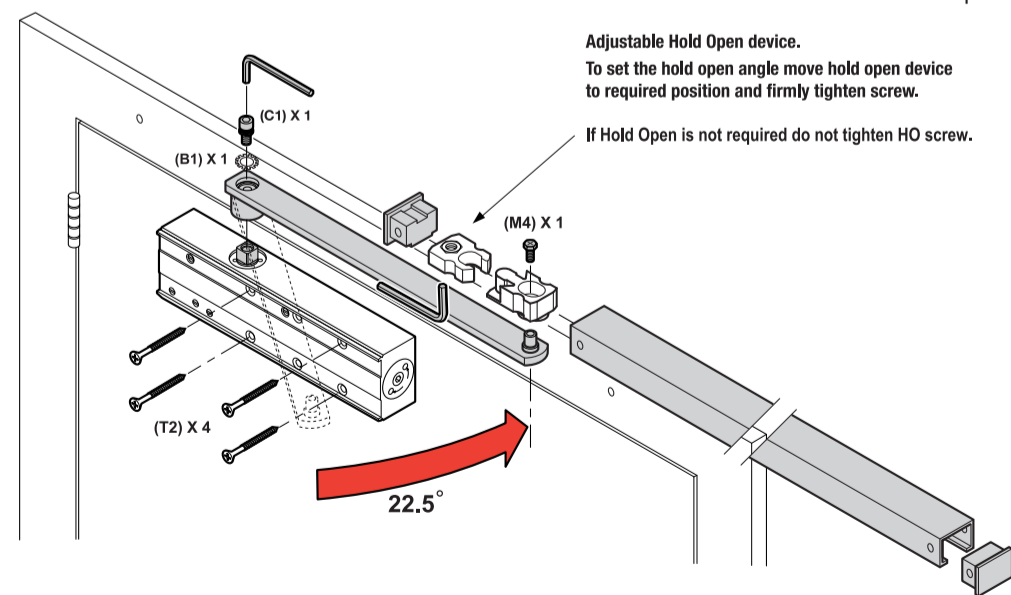
Timber	drill Ø3
Metal	drill Ø4.2 and tap M5

1 Align template to door. Mark & drill 4 body mounting holes and 2 track holes as indicated on this sheet.

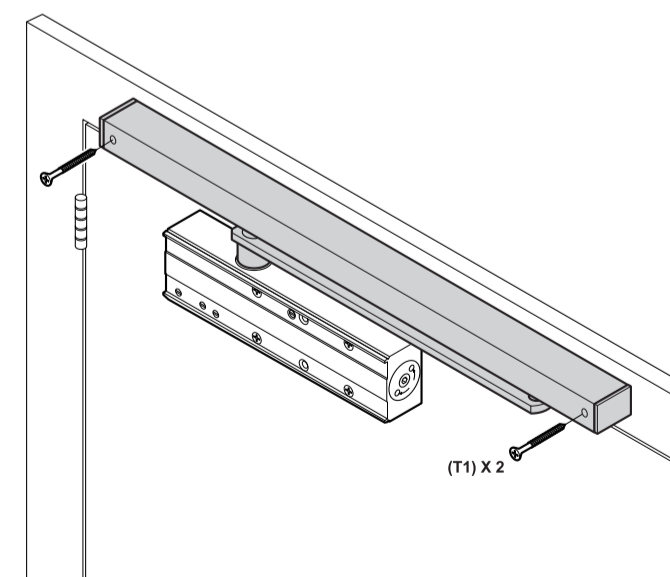


SLIDE ARM FIXING (PULL SIDE)

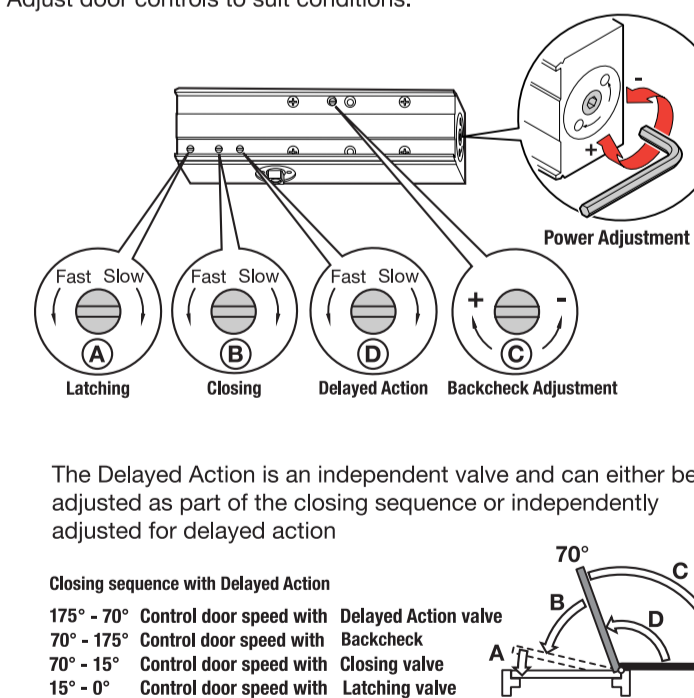
2 • Screw body in place using screws as shown.
• Assemble arm to pinion as shown.
• Secure arm and rail foot with screw provided.



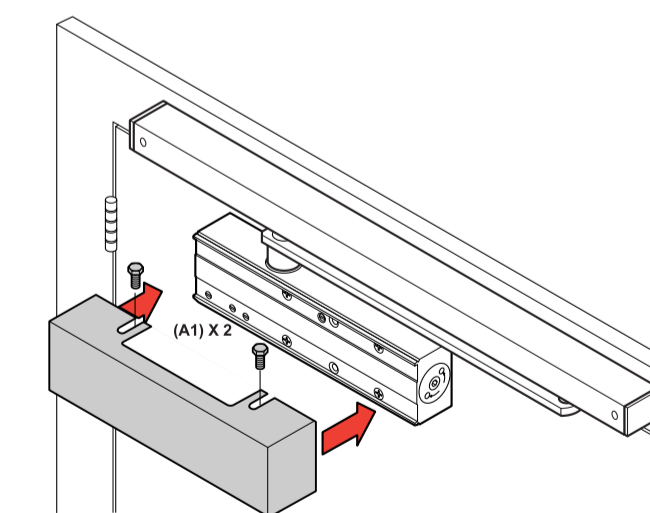
3 Slip rail foot into track and insert end caps. Push track and arm towards frame and secure in position.



4 Adjust door controls to suit conditions.

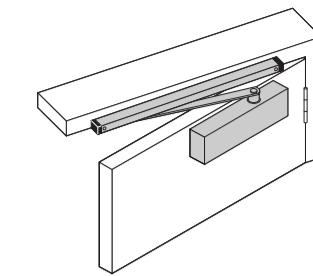


5 Fit front cover



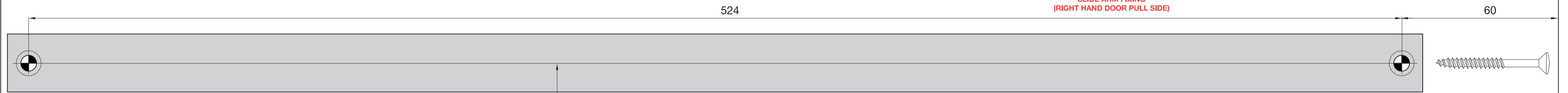
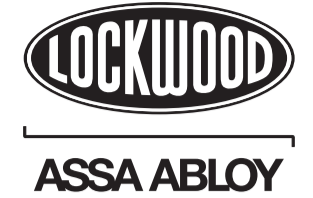
FOLD HERE

Power Size	Max. Door Width	Max. Door Weight	Max. Door Opening	Min. Closing Torque	Number Turns	Direction
EN1	750mm	20kg	175°	9Nm	8	Anti - Clockwise
EN2	850mm	40kg	175°	13Nm	-	-
EN3	950mm	60kg	175°	18Nm	7	Clockwise

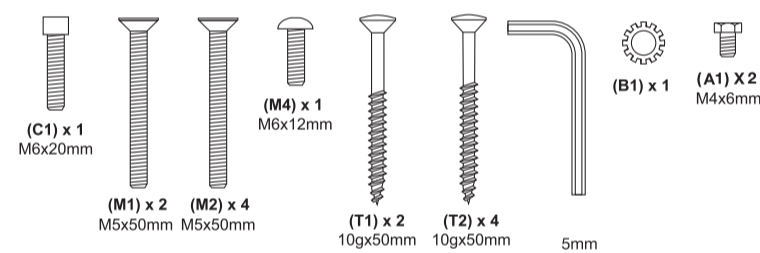
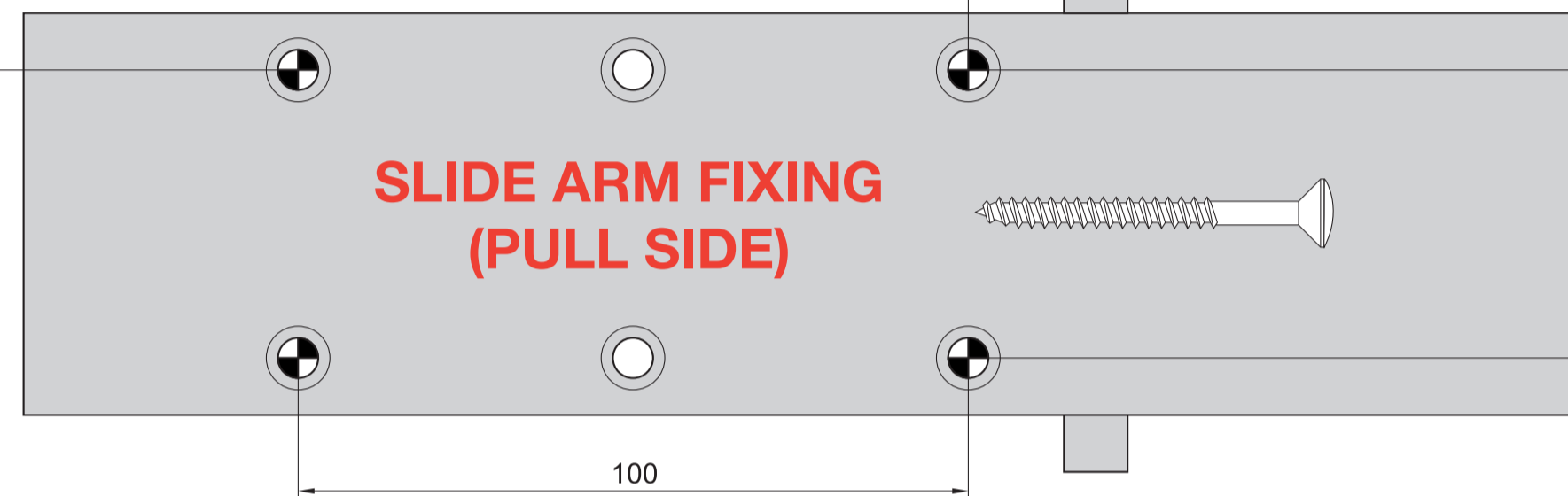


SLIDE ARM FIXING (RIGHT HAND DOOR PULL SIDE)

7714 SERIES SLIDE ARM DOOR CLOSER



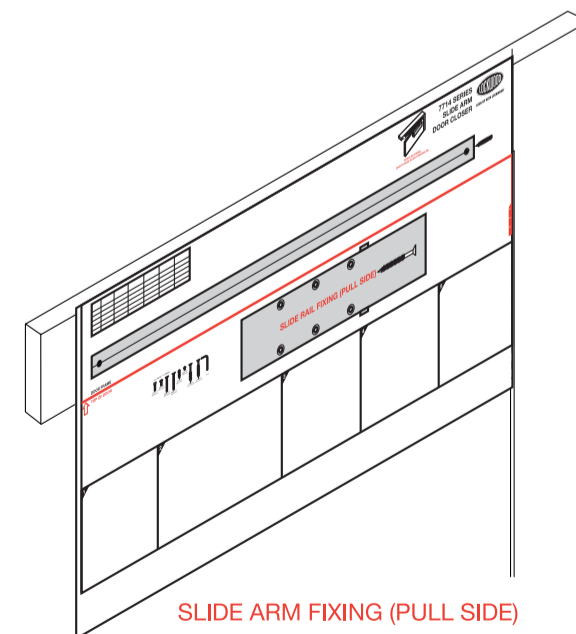
DOOR FRAME



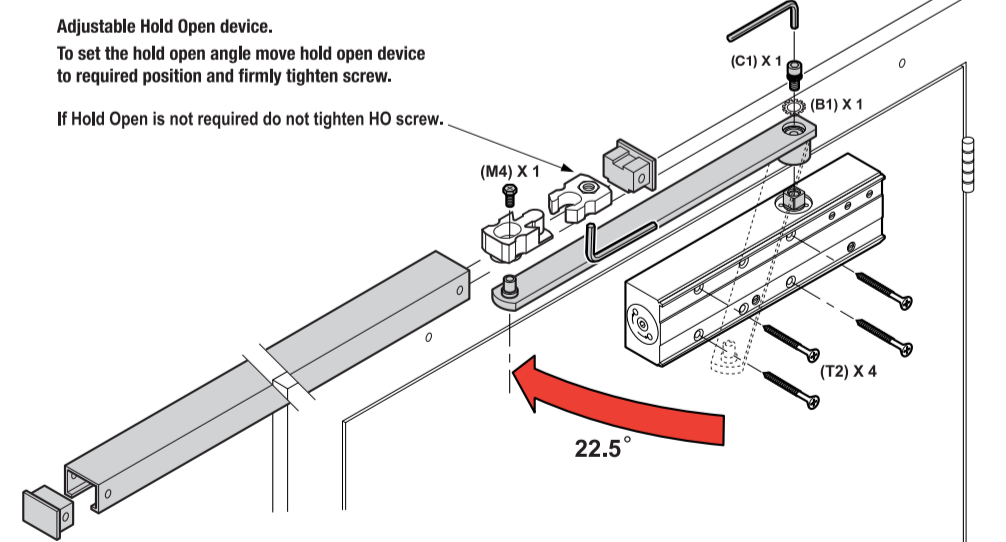
M = METAL T = TIMBER

Timber	drill Ø3
Metal	drill Ø4.2 and tap M5

1 Align template to door. Mark & drill 4 body mounting holes and 2 track holes as indicated on this sheet.

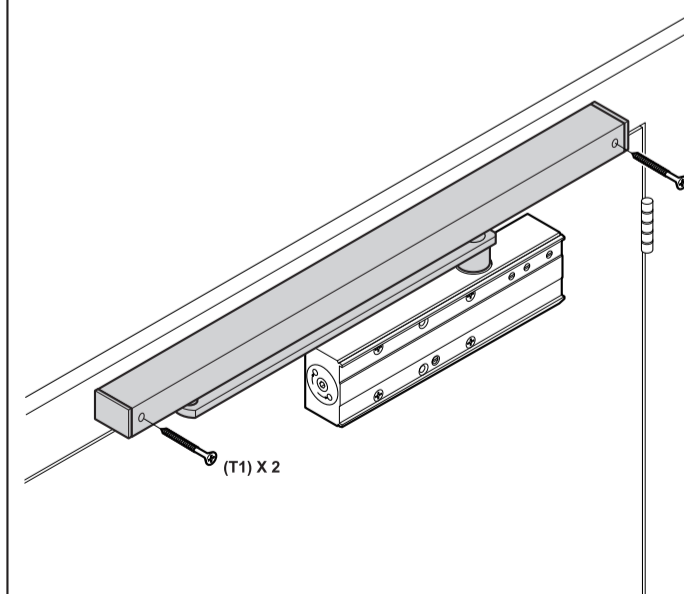


2 • Screw body in place using screws as shown.
• Assemble arm to pinion as shown.
• Secure arm and rail foot with screw provided.

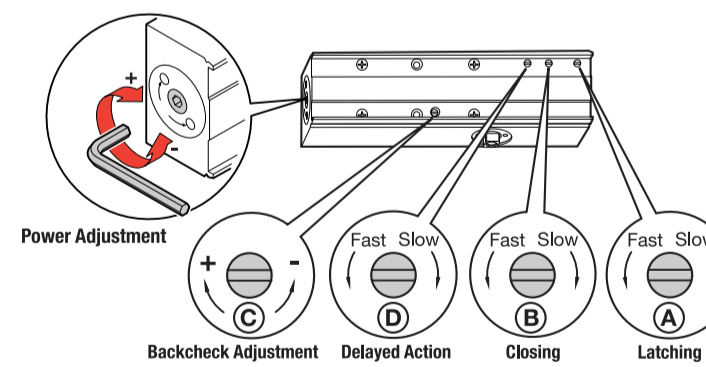


Adjustable Hold Open device. To set the hold open angle move hold open device to required position and firmly tighten screw. If Hold Open is not required do not tighten HO screw.

3 Slip rail foot into track and insert end caps. Push track and arm towards frame and secure in position.

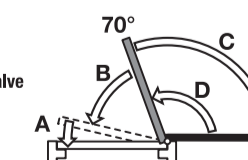


4 Adjust door controls to suit conditions.

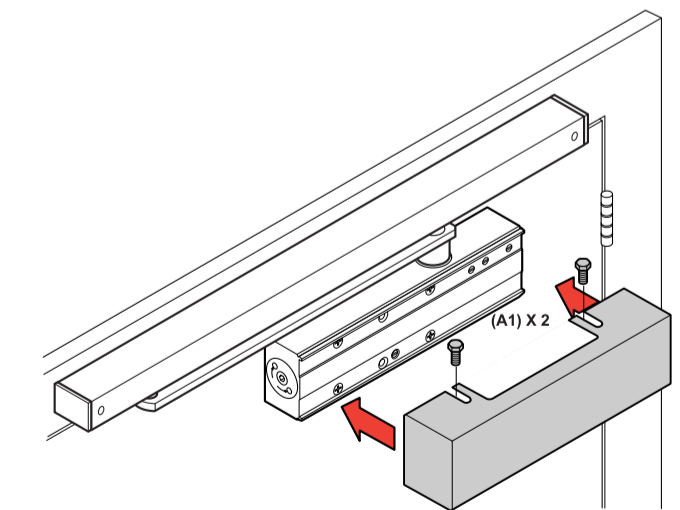


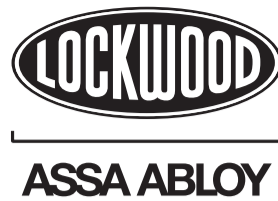
The Delayed Action is an independent valve and can either be adjusted as part of the closing sequence or independently adjusted for delayed action

Closing sequence with Delayed Action
 175° - 70° Control door speed with Delayed Action valve
 70° - 175° Control door speed with Backcheck
 70° - 15° Control door speed with Closing valve
 15° - 0° Control door speed with Latching valve

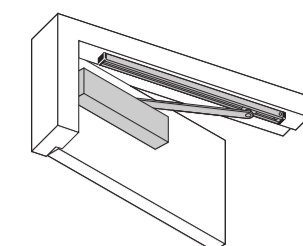


5 Fit front cover



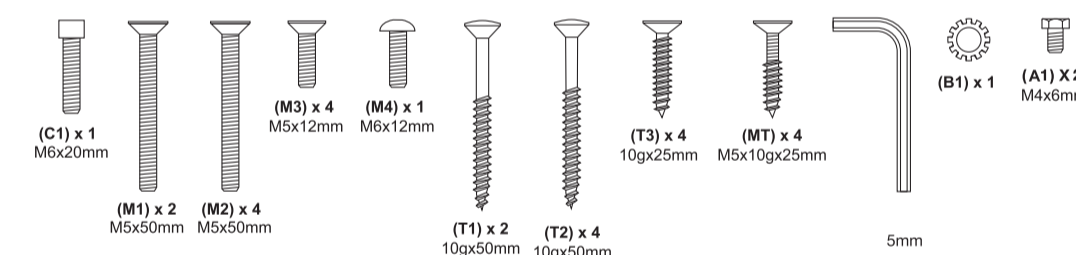
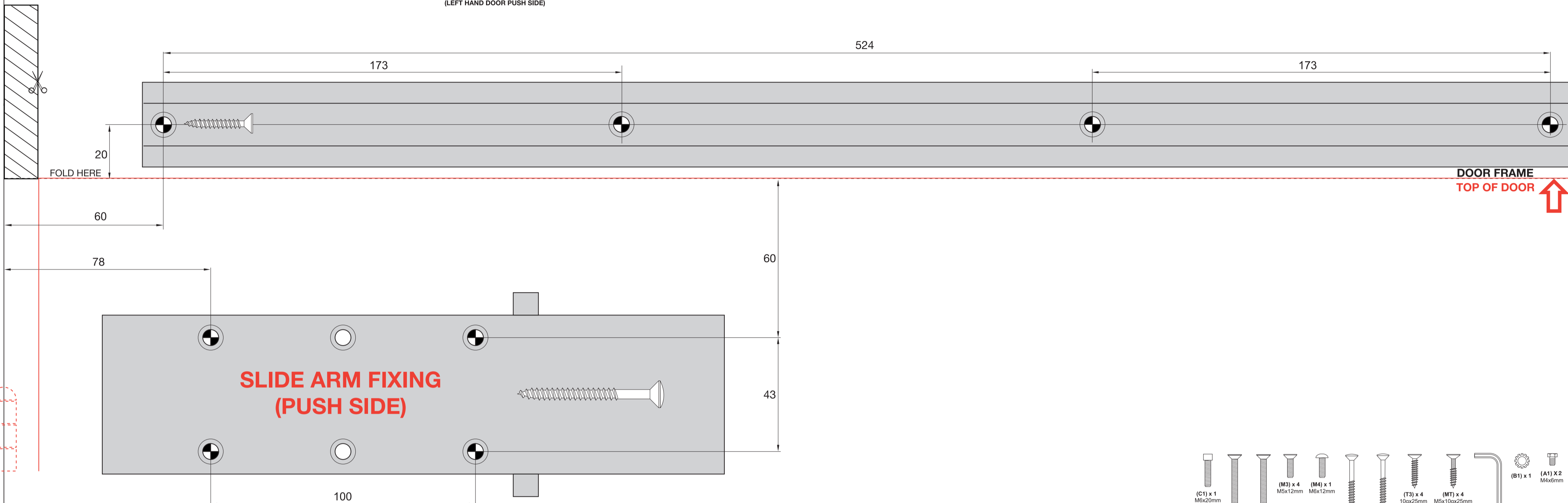


7714 SERIES SLIDE ARM DOOR CLOSER



SLIDE ARM FIXING
(LEFT HAND DOOR PUSH SIDE)

Power Size	Max. Door Width	Max. Door Weight	Max. Door Opening	Min. Closing Torque	Number Turns	Direction
EN1	750mm	20kg	130°	9Nm	8	Anti - Clockwise
EN2	850mm	40kg	130°	13Nm	-	-
EN3	950mm	60kg	130°	18Nm	7	Clockwise



M = METAL T= TIMBER

Timber	drill Ø3
Metal	drill Ø4.2 and tap M5

1 Align template to door. Mark & drill 4 body mounting holes and 4 track holes as indicated on this sheet.

SLIDE ARM FIXING (PUSH SIDE)

2

- Screw body in place using screws as shown.
- Preload pinion as shown and assemble arm to pinion.
- Secure arm and rail foot with screw provided.

Adjustable Hold Open device. To set the hold open angle move hold open device to required position and firmly tighten screw.

If Hold Open is not required do not tighten HO screw.

(C1) x 1, (B1) x 1, (M4) x 1, (T2) x 4, 22.5°

3

Slip rail foot into track and secure in position. Insert end caps.

(T3) x 4

4 Adjust door controls to suit conditions.

Power Adjustment, Backcheck Adjustment, Delayed Action, Closing, Latching

The Delayed Action is an independent valve and can either be adjusted as part of the closing sequence or independently adjusted for delayed action

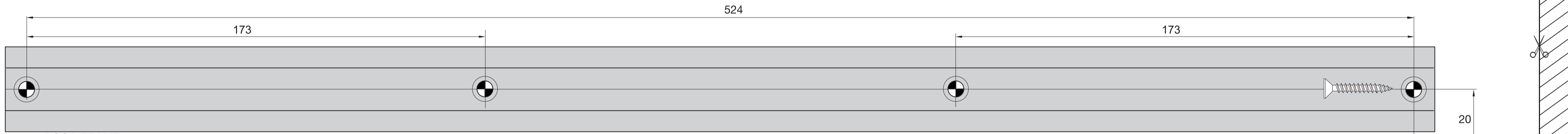
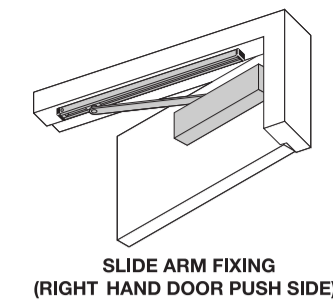
Closing sequence with Delayed Action
 130° - 70° Control door speed with Delayed Action valve
 70° - 130° Control door speed with Backcheck
 70° - 15° Control door speed with Closing valve
 15° - 0° Control door speed with Latching valve

5 Fit front cover

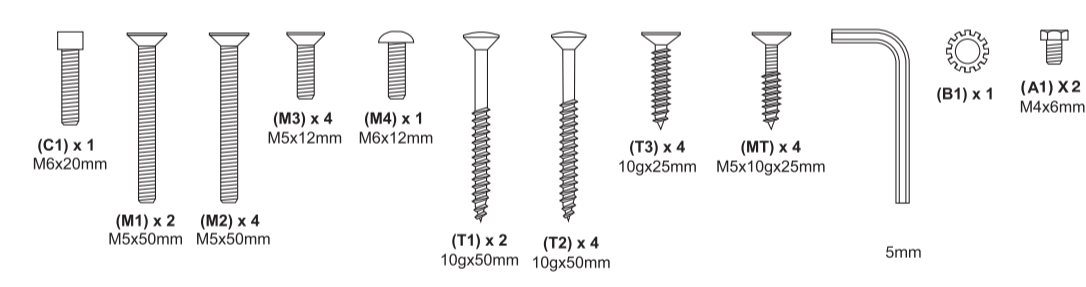
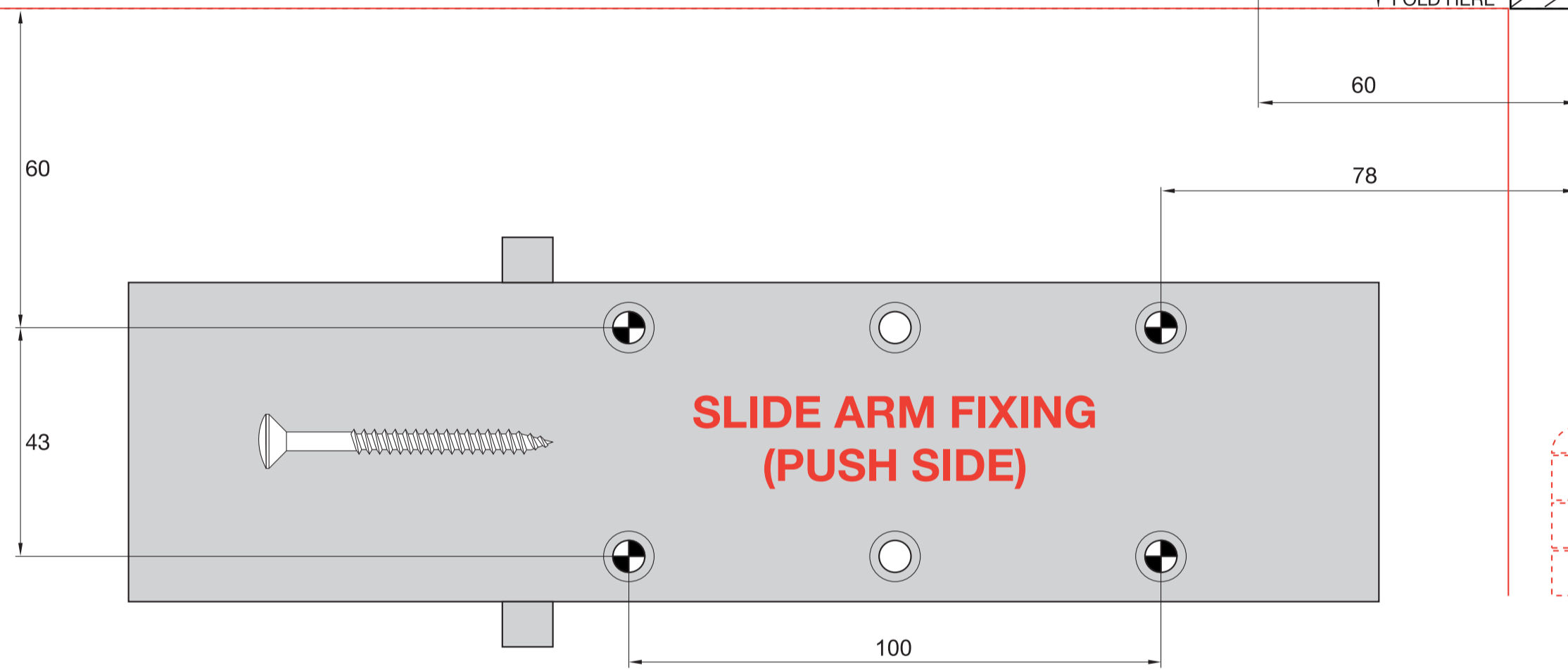
(A1) x 2

Power Size	Max. Door Width	Max. Door Weight	Max. Door Opening	Min. Closing Torque	Number Turns	Direction
EN1	750mm	20kg	130°	9Nm	8	Anti - Clockwise
EN2	850mm	40kg	130°	13Nm	-	-
EN3	950mm	60kg	130°	18Nm	7	Clockwise

**7714 SERIES
SLIDE ARM
DOOR CLOSER**

DOOR FRAME
TOP OF DOOR



M = METAL T= TIMBER

Timber	drill Ø3
Metal	drill Ø4.2 and tap M5

1 Align template to door. Mark & drill 4 body mounting holes and 4 track holes as indicated on this sheet.

SLIDE ARM FIXING (PUSH SIDE)

2 Screw body in place using screws as shown. Preload pinion as shown and assemble arm to pinion. Secure arm and rail foot with screw provided.

Adjustable Hold Open device. To set the hold open angle move hold open device to required position and firmly tighten screw. If Hold Open is not required do not tighten HO screw.

3 Slip rail foot into track and secure in position. Insert end caps.

4 Adjust door controls to suit conditions.

The Delayed Action is an independent valve and can either be adjusted as part of the closing sequence or independently adjusted for delayed action.

Closing sequence with Delayed Action
 130° - 70° Control door speed with Delayed Action valve
 70° - 130° Control door speed with Backcheck
 70° - 15° Control door speed with Closing valve
 15° - 0° Control door speed with Latching valve

5 Fit front cover

Instructions 7714_SLIDE_ARM_PUSH_SIDE SEPT 2009

FOLD HERE