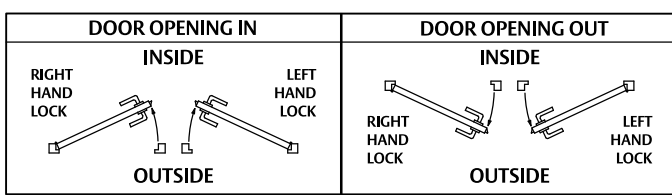


3770 Series Mortice Lock

MOUNTING INSTRUCTIONS FOR TIMBER DOORS

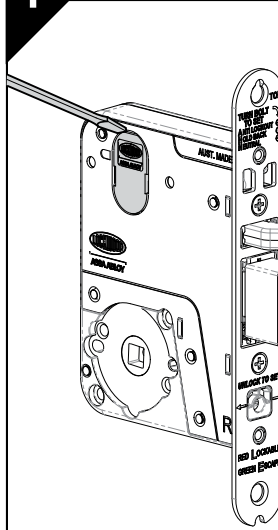
PINo. 3770-121 01/16

HAND OF DOOR ACCORDING TO ENGLISH PRACTICE



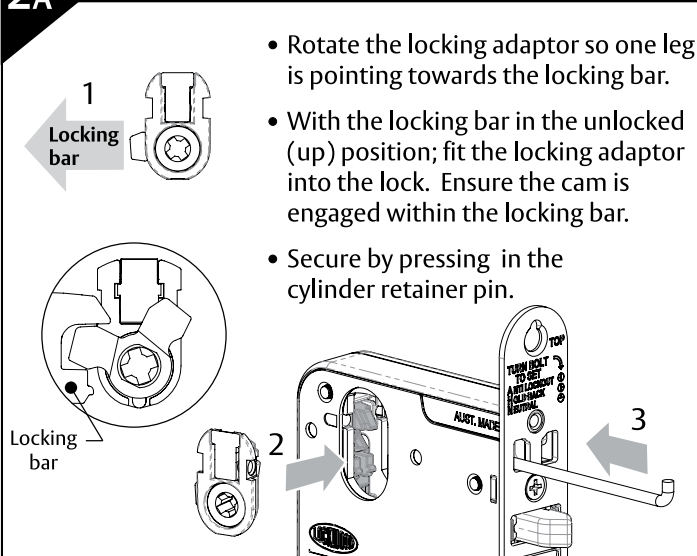
- Determine hand of lock required from chart above.
- Ensure only holes required by handing, function and furniture are cut into door.
- Disregard instructions referring to features not required.
- The lock is supplied in passage mode. The holdback and anti-lockout functions are de-activated.

1 LOCK SETTING



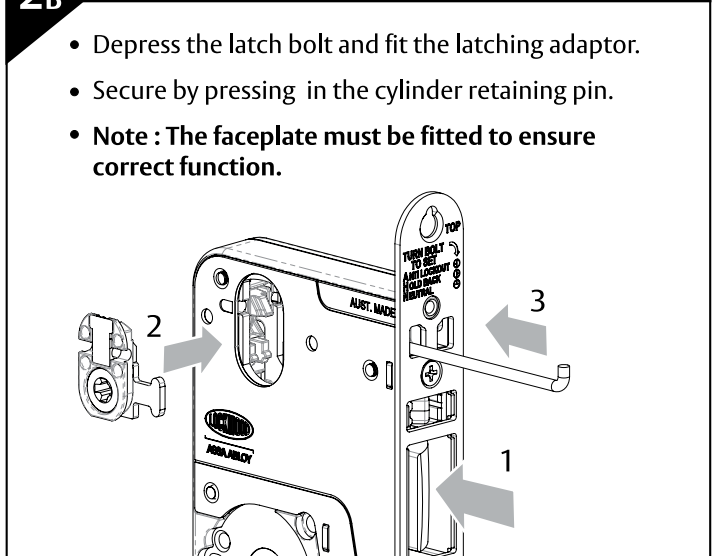
- Where cylinders or turnknobs are required, remove the cylinder plugs from the lock using a small screwdriver.
- Set the required lock function as per **SETTING AND OPERATING INSTRUCTIONS**.

2A LOCKING ADAPTOR INSTALLATION



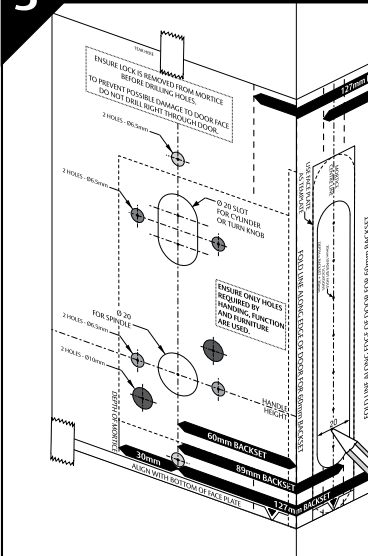
- Rotate the locking adaptor so one leg is pointing towards the locking bar.
- With the locking bar in the unlocked (up) position; fit the locking adaptor into the lock. Ensure the cam is engaged within the locking bar.
- Secure by pressing in the cylinder retainer pin.

2B LATCHING ADAPTOR INSTALLATION

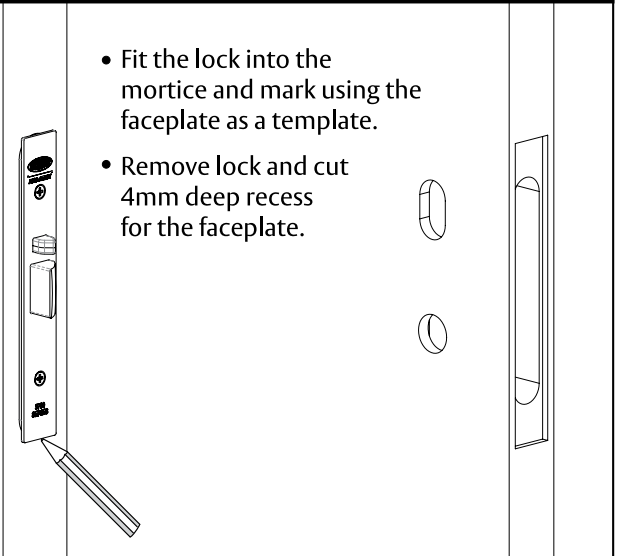


- Depress the latch bolt and fit the latching adaptor.
- Secure by pressing in the cylinder retaining pin.
- **Note : The faceplate must be fitted to ensure correct function.**

3 DOOR PREPARATION



- Establish height that lock will be on the door.
- Cut mortise in door as per sizes shown on template.
- Determine what lever, cylinder or turnknob holes are required.
- Drill required furniture holes from both sides of door.



- Fit the lock into the mortise and mark using the faceplate as a template.
- Remove lock and cut 4mm deep recess for the faceplate.

3770 Series Mortice Lock

MOUNTING INSTRUCTIONS FOR TIMBER DOORS

4 LOCK INSTALLATION

- Place lock in mortise.
- Drill 2.5mm pilot holes and secure using 30mm long screws provided.
- To hand the latch bolt, pull latch bolt forward and rotate to required handing.

5 CYLINDER INSTALLATION

- Place the cylinder into the lock.
- Secure by pressing in the cylinder retainer pin, ensuring pin is flush with front plate.
- For cylinder cam selection refer to **SETTING AND OPERATING INSTRUCTIONS**.

6 FACEPLATE INSTALLATION

- Fit faceplate onto lock using the supplied 8mm long screws.

7 SPINDLE INSTALLATION

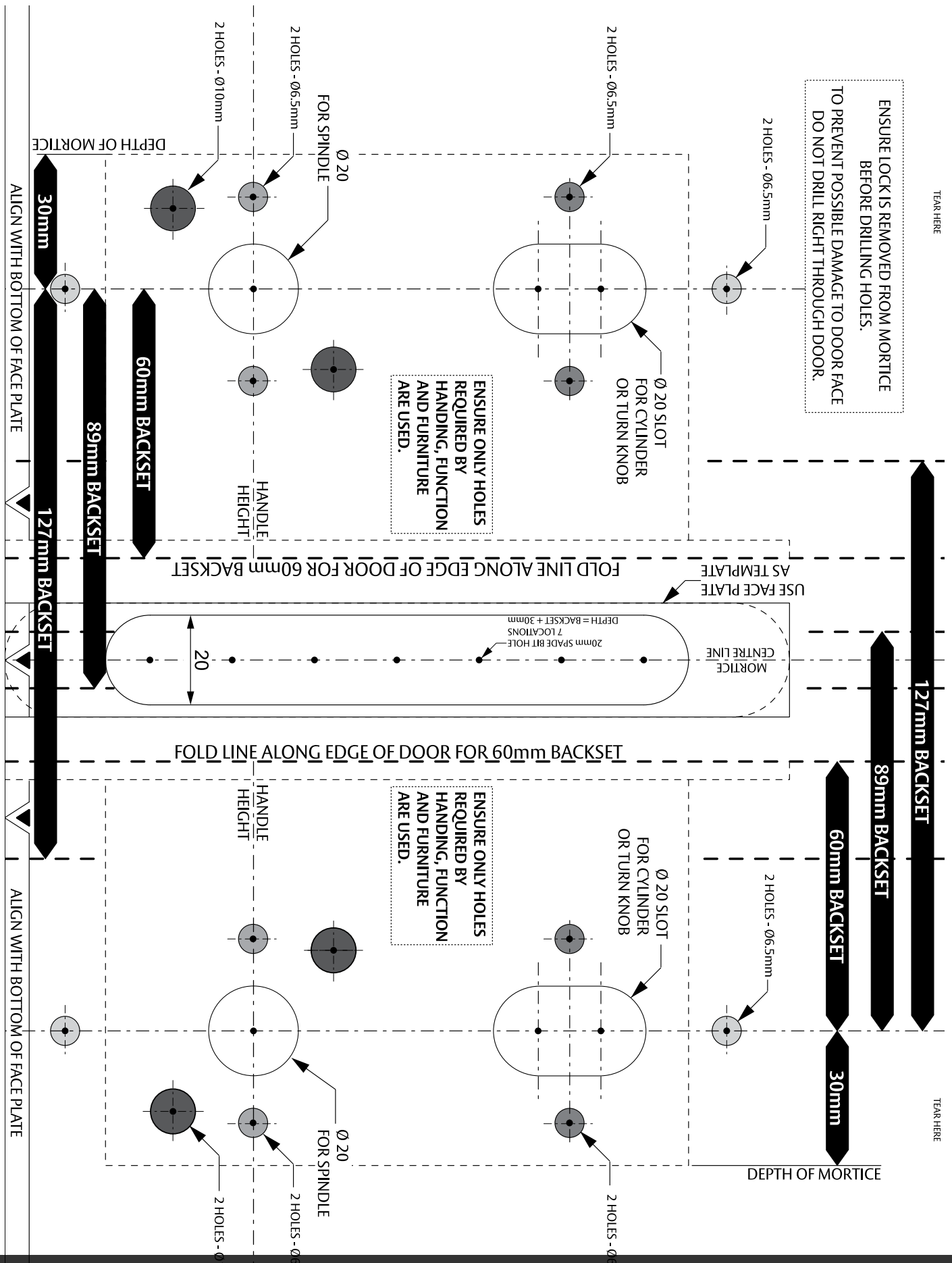
- Fit spring to spindle and then fit into lock hubs.
- Install furniture according to instructions.

8 STRIKE INSTALLATION

- Mark position of strike on door frame.
- Use strike and strike box as templates and then mortise door frame for strike.
- Install strike and strike box with mounting screws supplied.
 - Timber frames - drill 2.5mm pilot holes and use 30mm long screws
 - Metal frames - drill 4mm pilot holes and use 12mm long screws

3770 Series Mortice Lock

MOUNTING INSTRUCTIONS FOR TIMBER DOORS



TEMPLATES ARE INCLUDED FOR INFORMATIVE PURPOSE ONLY. DO NOT SCALE FROM THIS MANUAL. PLEASE USE ORIGINAL TEMPLATES PROVIDED WITH THE PRODUCT.