

TOILET PARTITION HARDWARE

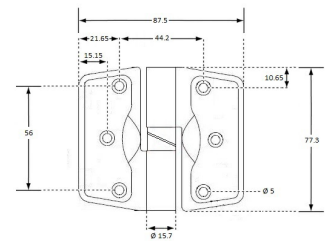


301

301 Gravity Hinge - Concealed Fix

Specification

Material	Diecast Zinc, Alloy ZP3 #304 Stainless Steel Shaft Nylon Inserts ABS Snap-On Covers
Finish	Satin Chrome Plate
Mounting	Concealed Screw Fix or Bolt Through
Specify	301_LHHC_SCP: Left Hand, Hold Closed. Assists door to move towards Hold Closed position. 301_LHHO_SCP: Left Hand, Hold Open. Assists door to move towards Hold Open position. 301_RHHC_SCP: Right Hand, Hold Closed. Assists door to move towards Hold Closed position. 301_RHHO_SCP: Right Hand, Hold Open. Assists door to move towards Hold Open position.
Features	Gravity assisted door opening/door closing with lift off capability.
Load Rating	15Kg per hinge For optimum performance: 2 hinges per door up to 30Kgs For doors over 30Kg allow for 15Kg per hinge <i>Note: 3 Hinges per door is recommended to prevent door bowing</i>
Note	For Bolt Through use 106C_FACEPLATE Concealed Fix Face Plate (Available in Satin Chrome Plate, Bright Chrome Plate and Satin Nickel Plate)
Disclaimer	Gravity hinges contain no mechanical components. The functionality of these hinges can vary depending on the environment. When selecting this product, please view our Product Disclosure Statement in the Care and Maintenance Download below. <i>Note: All hinges are available with or without fixings. Please nominate your requirements at the time of ordering .</i>



Associated Video

[Stainless Steel Cleaning & Maintenance](#)

[Accessibility and safety features of Metlam Australia Toilet Partition Hardware and how to use them](#)

[Troubleshooting your Metlam Australia Toilet Partition Hardware - Hinges](#)

Downloads & Resources

Care & Maintenance

The photographs and line drawings of the products presented above are representational only.
Metlam Australia Pty Ltd reserves the right to, and from time to time, make changes and improvements in design and dimensions.