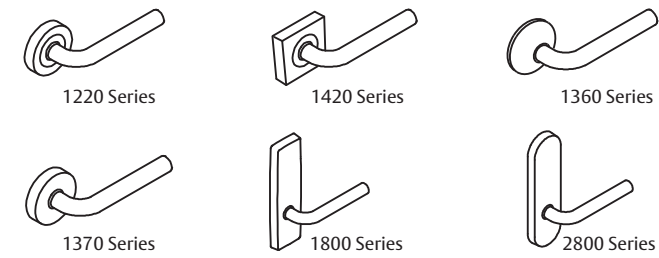


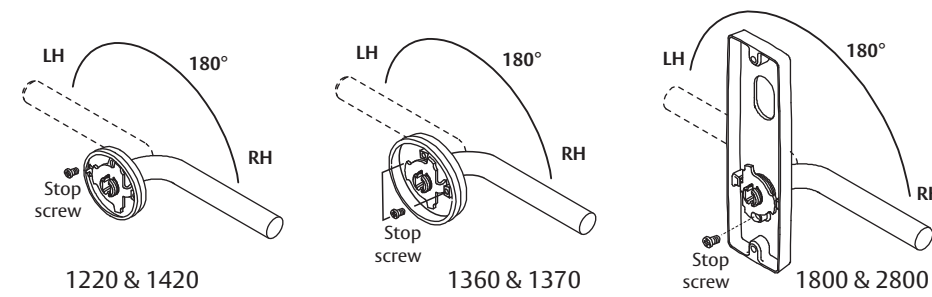
Product ranges applicable:



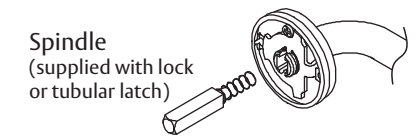
HAND OF DOOR ACCORDING TO ENGLISH PRACTICE	
DOOR OPENING IN	DOOR OPENING OUT
<p>INSIDE RIGHT HAND LOCK LEFT HAND LOCK OUTSIDE</p>	<p>INSIDE RIGHT HAND LOCK LEFT HAND LOCK OUTSIDE</p>

P/No. 1220-221 - 0321

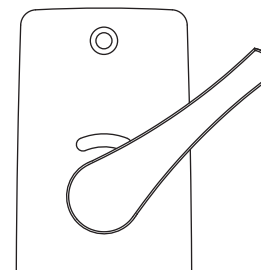
1 Set Door Furniture Handing



- Verify the correct handing of furniture on the door required. Lever should rotate downwards.
- For handing of furniture with non-handed levers or knobs, position the handle by rotating it 180° to suit the door LH or RH then insert the 4mm stop screw to suit.
- Stop screws are supplied in an accessory packet in the box.



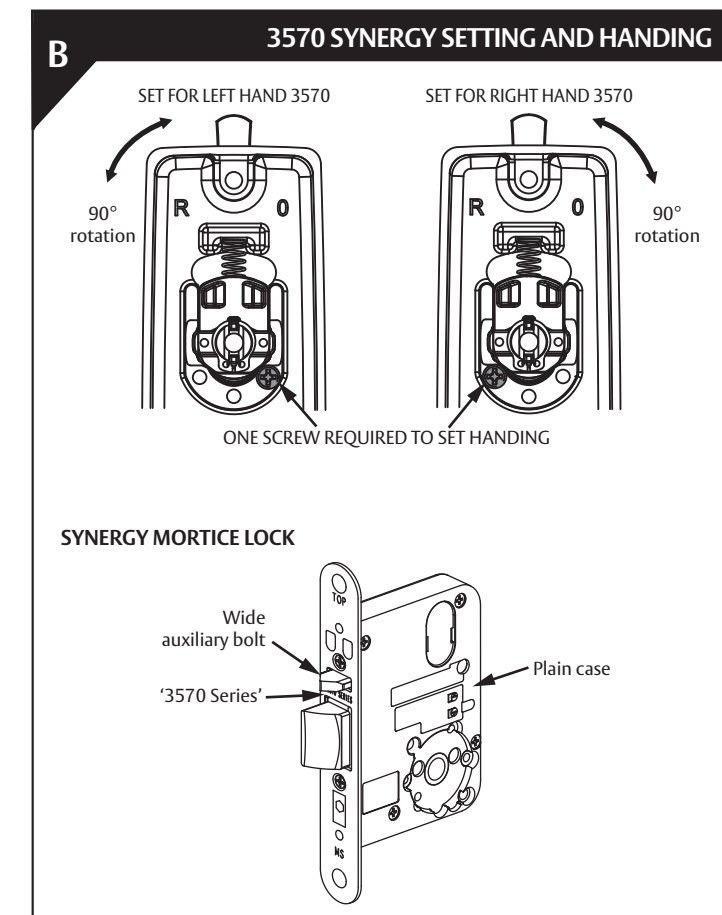
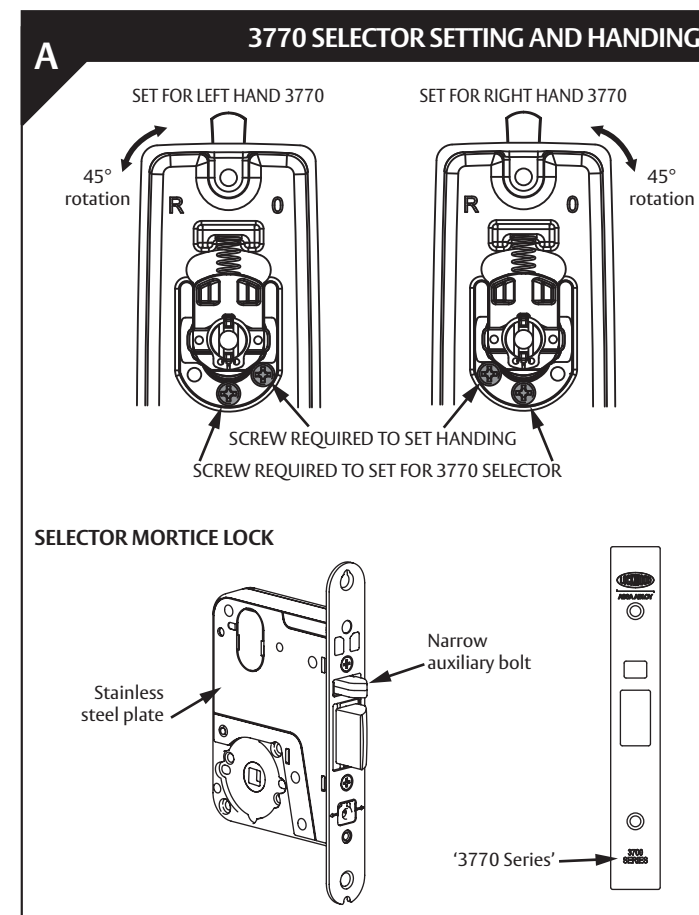
2 Configuring Disabled Accessible Turn



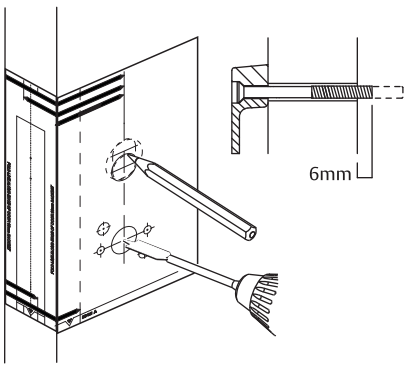
If mounting a plate with a disabled accessible turn, the turn will need to be configured according to the mortice lock in use.

1. Refer to the images below to identify the mortice lock in use.
2. Position the screws according to the turn setting required. Selector configurations should allow 45° rotation, Synergy configurations should rotate to 90°.

Use images below as a guide.



3 Door Preparation



- Cut out template from instruction sheet.
 - Remove lock from mortise and place the template in the correct alignment according to the backset required.
 - Mark hole centres accurately and drill holes required.
 - If required, cut screws to length as indicated. Deburr end of cut screws.
- Note: Do not cut with pliers or side-cutters as this is likely to cause thread damage upon assembly.

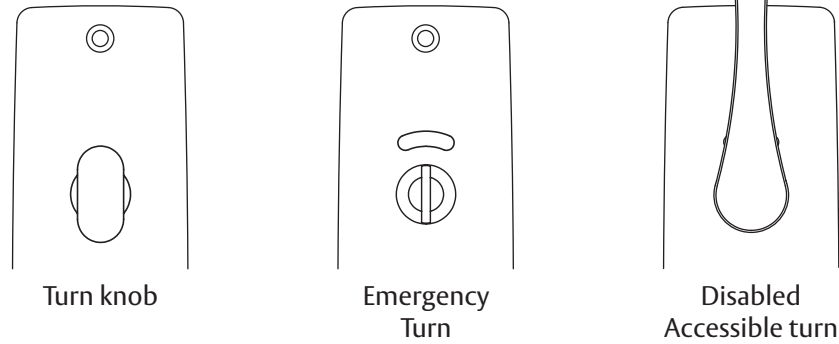
THIS IS A COMMON TEMPLATE FOR INSTALLATION OF LOCKWOOD COMMERCIAL DOOR FURNITURE WHEN USED WITH THE LOCKWOOD SERIES MORTICE LOCKS.

NOTE: BEFORE DRILLING HOLES CHECK SUITABILITY WITH LOCKSET AND FURNITURE TO BE FITTED. FOR ALL OTHER DETAILS REFER TO LOCK MOUNTING INSTRUCTIONS.

ENSURE LOCK IS REMOVED FROM MORTICE BEFORE DRILLING HOLES. DO NOT DRILL HOLES RIGHT THROUGH DOOR TO PREVENT POSSIBLE DAMAGE TO DOOR FACE.

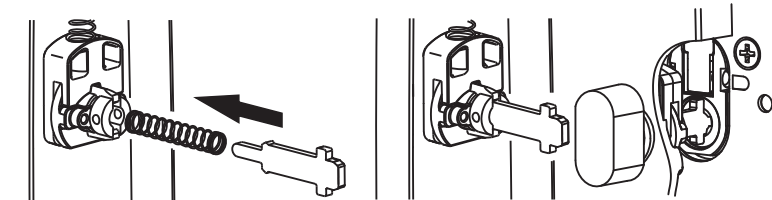
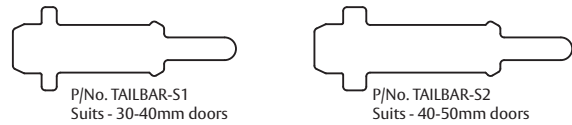
4 Mounting Plate Furniture with Turn Configurations

Turn examples:



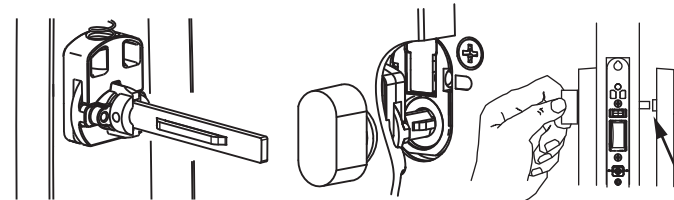
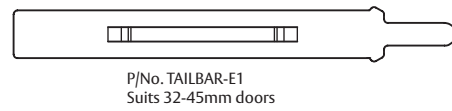
Use the appropriate tailbar according to the turn combination mounted.

For single side turn only



1. Insert spring and tailbar into end of turn knob as above. Push tailbar until engaged and retained in turn knob. Refer above for correct tailbar for your door thickness.
2. Engage tailbar end into turn snib adaptor as shown.

For privacy configuration (Turn on both sides)



1. Insert spring and narrow end of tailbar into turnknob or disabled accessible turn until engaged and retained.
2. Pass tailbar completely through the turn snib adaptor as shown.
3. Make sure tailbar engages with the turn escutcheon on the other side of the lock.

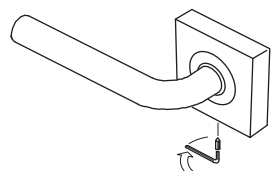
5 Final Assembly

For Round Rose Furniture

- Insert fixing screws through inner retainer rose.
- Mount furniture on door through lock or latch.
- Secure furniture by tightening fixing screws.
- Check screw length is correct. For 1220 & 1420, ensure screws do not protrude through outer furniture.

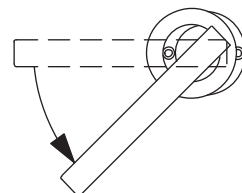
For Square Rose Trim Furniture (1420 only)

- If required, fix grub screw to outer square rose with allen key supplied.



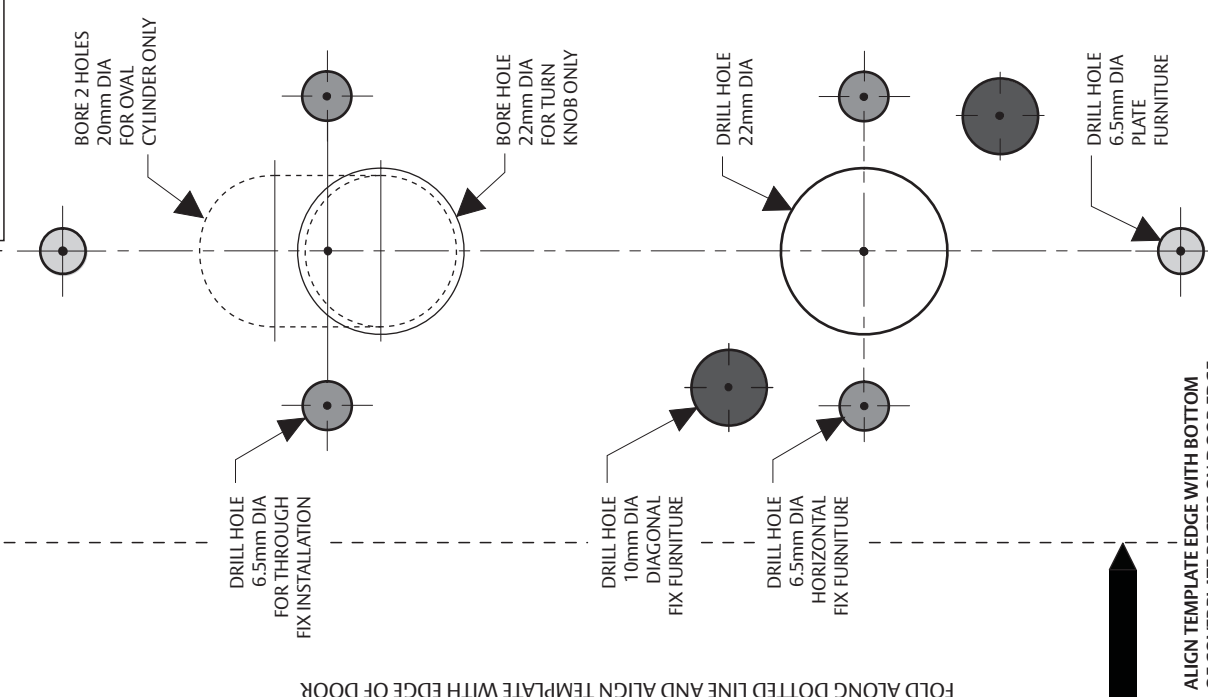
For Captive Rose Furniture (1220 & 1420 only)

- For Captive Rose Furniture levers, loosen and undo outer rose trim.
- Rotate lever 45° and position rose trim to allow clear access to fixing screw holes.
- Insert fixing screws.



TEAR HERE

127mm BACKSET
89mm BACKSET
60mm BACKSET

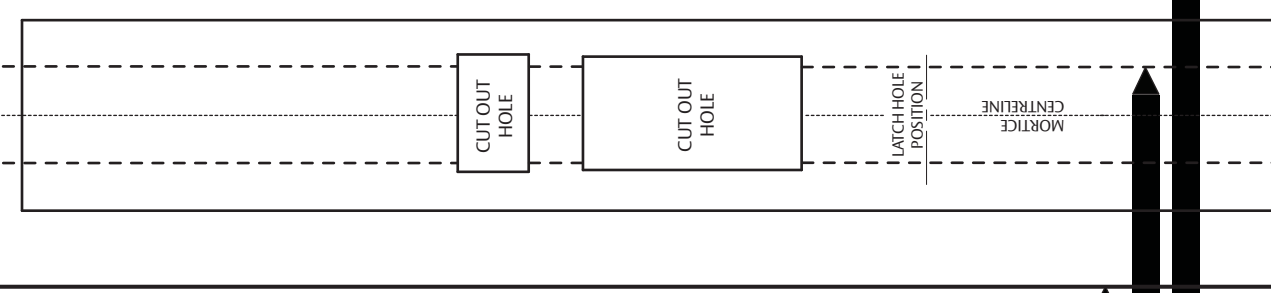


FOLD ALONG DOTTED LINE AND ALIGN TEMPLATE WITH EDGE OF DOOR

ALIGN TEMPLATE EDGE WITH BOTTOM OF COVERPLATE RECESS ON DOOR EDGE

TEAR HERE

60mm BACKSET
89mm BACKSET
127mm BACKSET



FOLD ALONG DOTTED LINE AND ALIGN TEMPLATE WITH EDGE OF DOOR

ALIGN TEMPLATE EDGE WITH BOTTOM OF COVERPLATE RECESS ON DOOR EDGE

